

1000  
 DAKOTA WEST FARMS PARTNERSHIP  
 W1/2 SEC. 7 T136N R98W  
 LENGTH 5286.39-320.39 RODS-7.58 ACRES

NW 1/4  
 SEC. 7 T136N R98W  
 SLOPE CO., NORTH DAKOTA

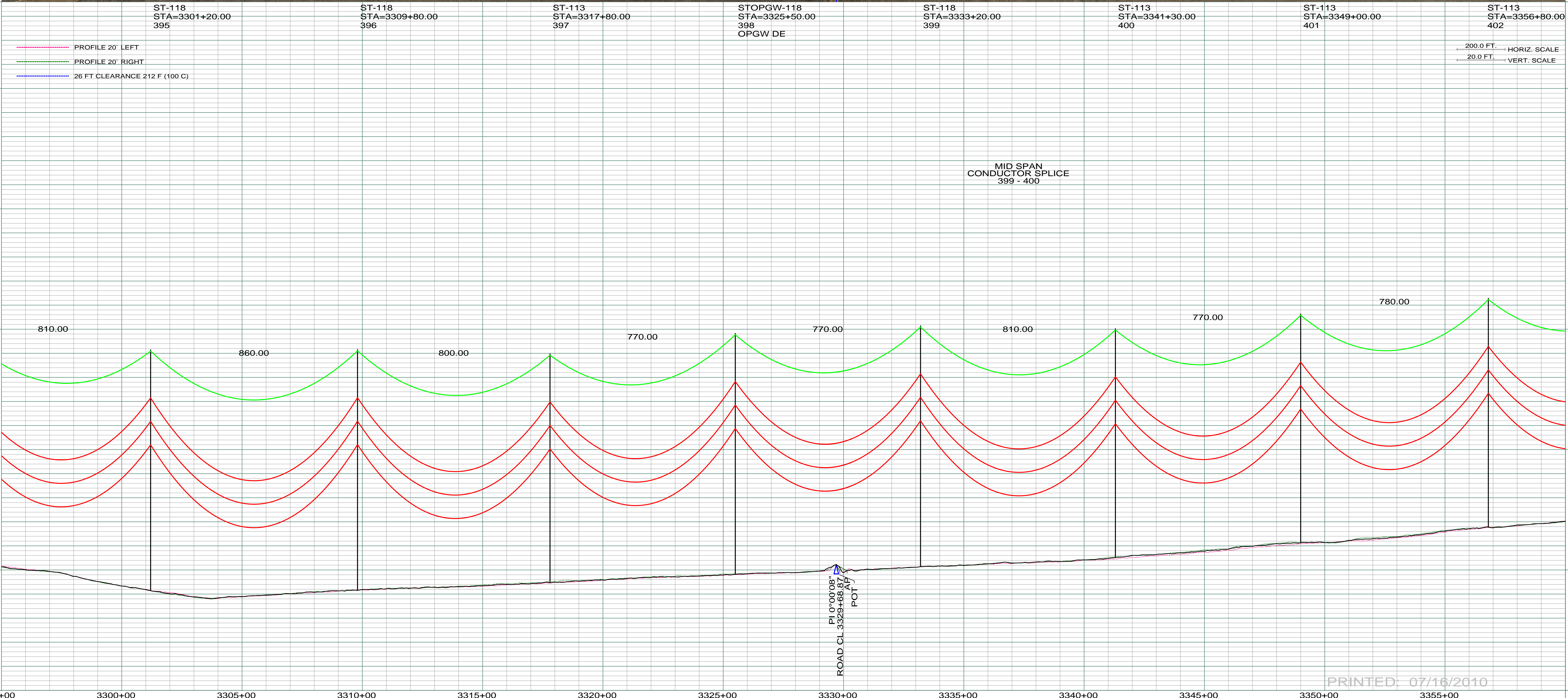
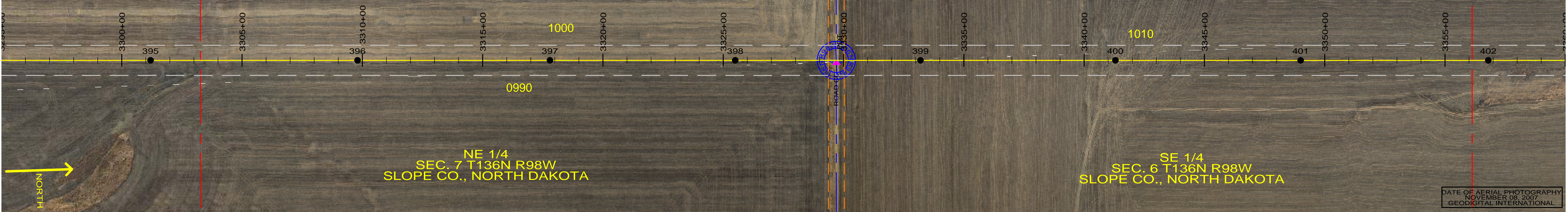
SW 1/4  
 SEC. 6 T136N R98W  
 SLOPE CO., NORTH DAKOTA

1010  
 IDA BUTLER FAMILY SURFACE TRUST  
 S1/2 GOVT LOTS 10,11 SEC. 6-T136N-R98W  
 CENTERLINE LENGTH 3964.48'-  
 240.27 RODS-11.38 ACRES

NE 1/4  
 SEC. 7 T136N R98W  
 SLOPE CO., NORTH DAKOTA

SE 1/4  
 SEC. 6 T136N R98W  
 SLOPE CO., NORTH DAKOTA

DATE OF AERIAL PHOTOGRAPHY  
 NOVEMBER 08, 2007  
 GEODIGITAL INTERNATIONAL



PRINTED: 07/16/2010

REV	DESCRIPTION	DRWN	DSGN	APPD	DATE	REV	DESCRIPTION	DRWN	DSGN	APPD	DATE
1	ISSUE TO PUBLIC SERVICE COMMISSION	CDB	CDB	DAM	08-08-08						
2	RELEASE FOR BID	CDB	CDB	DAM	01-15-09						
3	ISSUED FOR CONSTRUCTION	CDB	CDB	DAM	03-30-09						
4	AS-BUILT	CDB	CDB	DAM	07-16-10						

DESIGN INFORMATION		DESIGN BY:	DATE
CONDUCTOR	1272 MCM 45/7 ACSR	DAM/CDB	08-08-08
OPGW	AC-71/571	CDB	08-08-08
		DESIGN CHK:	08-08-08
		DRAFT CHK:	
		APPROVED:	09-05-08

STATE NAME: NORTH DAKOTA		NAD83 NDSPCS INTL FT SOUTH ZONE	
FACILITY:	TRANSMISSION SYSTEM MAINTENANCE	SCALE:	COUNTY NAME:
LOCATION UNIT:	181-230KV LINE-RHAME SUBSTATION TO BELFIELD SUBSTATION	AS SHOWN	SLOPE
RHAME TO BELFIELD 230KV TRANSMISSION LINE		BASIN DRAWING NO.	REV.
PLAN AND PROFILE		181-090-T3-060	4
MILE 56 & 57			