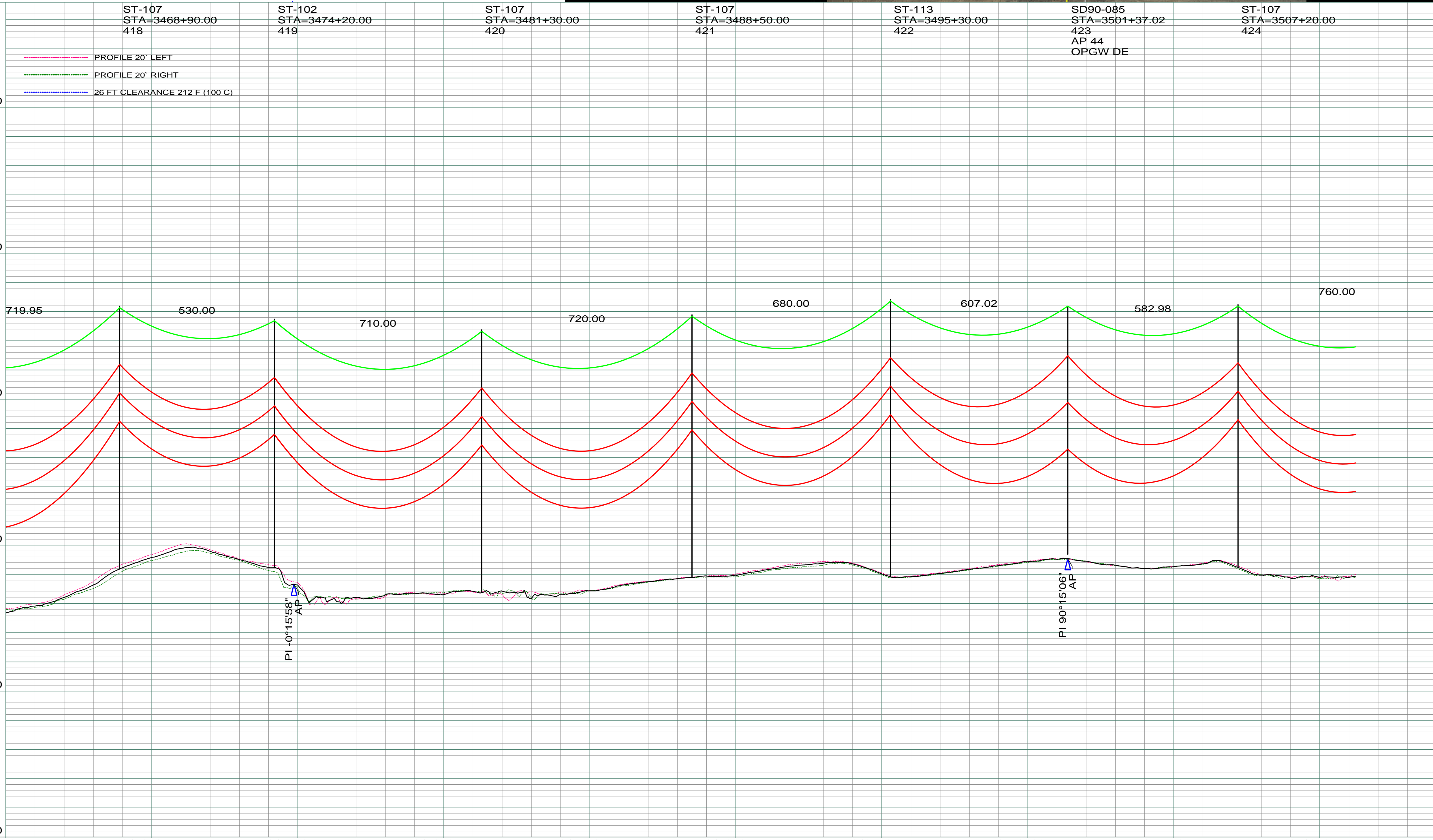


DATE OF AERIAL PHOTOGRAPHY
NOVEMBER 09, 2007
GEODIGITAL INTERNATIONAL



200.0 FT. HORIZ. SCALE
20.0 FT. VERT. SCALE

REV	DESCRIPTION	DRWN	DSGN	APPD	DATE	REV	DESCRIPTION	DRWN	DSGN	APPD	DATE
1	ISSUE TO PUBLIC SERVICE COMMISSION	CDB	CDB	DAM	08-08-08						
2	RELEASE FOR BID	CDB	CDB	DAM	01-15-09						
3	ISSUED FOR CONSTRUCTION	CDB	CDB	DAM	03-30-09						
4	AS-BUILT	CDB	CDB	DAM	07-16-10						

STATE NAME: NORTH DAKOTA NAD83 NDSPCS INTL FT SOUTH ZONE

DESIGN INFORMATION

CONDUCTOR	SIZE	STRINGING TENSION	NESC TENSION	DESIGN RULING SPAN	ACTUAL RULING SPAN
	1272 MCM 45/7 ACSR		0	800	0
OPGW	AC-71/571		0		

DESIGN BY: DAM/CDB 08-08-08
DRAWN BY: CDB 08-08-08
DESIGN CHK: SW/ULTEIG 08-08-08
DRAFT CHK:
APPROVED: DAM 09-05-08

FACILITY: TRANSMISSION SYSTEM MAINTENANCE
LOCATION UNIT: 181-230KV LINE-RHAME SUBSTATION TO BELFIELD SUBSTATION

RHAME TO BELFIELD 230KV TRANSMISSION LINE

SCALE: AS SHOWN COUNTY NAME: STARK
BASIN DRAWING NO. 181-090-T3-063 REV. 4

PLANNED AND PROFILE
MILE 59 & 60

PRINTED: 07/16/2010