

1190  
MARVIN & MARIE LANTZ  
THERESA C. LANTZ (LIFE ESTATE)  
S1/2SW1/4 SEC. 32-T138N-R98W  
LENGTH 1319.07 - 79.94 RODS - 1.89 ACRES

SW 1/4  
SEC. 32 T138N R98W  
STARK CO., NORTH DAKOTA

NW 1/4  
SEC. 32 T138N R98W  
STARK CO., NORTH DAKOTA

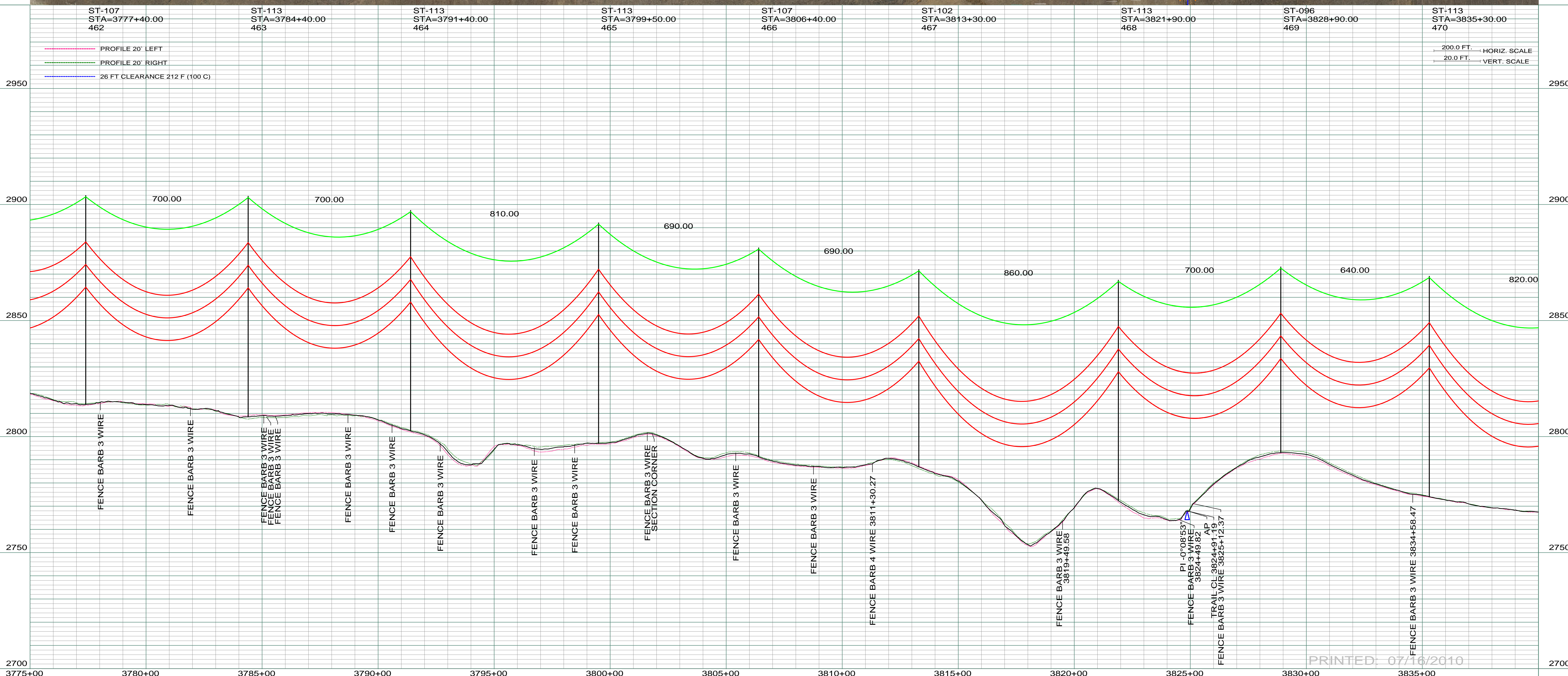
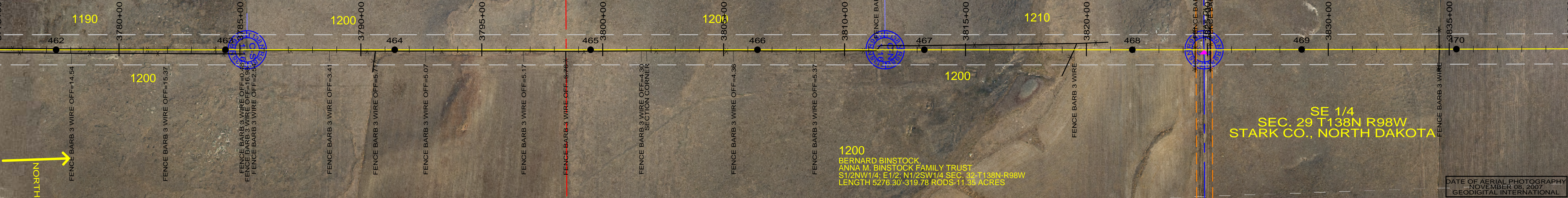
1210  
BERNARD & DEBORAH K. BINSTOCK  
S1/2NW1/4 SEC. 32-T138N-R98W  
LENGTH 1219.07 - 79.94 RODS - 1.89 ACRES

SE 1/4  
SEC. 29 T138N R98W  
STARK CO., NORTH DAKOTA

1200  
BERNARD BINSTOCK  
ANNA M. BINSTOCK FAMILY TRUST  
S1/2NW1/4, E1/2, N1/2SW1/4 SEC. 32-T138N-R98W  
LENGTH 5276.30 - 319.78 RODS - 11.35 ACRES

DATE OF AERIAL PHOTOGRAPHY  
NOVEMBER 08, 2007  
GEODIGITAL INTERNATIONAL

NORTH



REV	DESCRIPTION	DRWN	DSGN	APPD	DATE	REV	DESCRIPTION	DRWN	DSGN	APPD	DATE
1	ISSUE TO PUBLIC SERVICE COMMISSION	CDB	CDB	DAM	08-08-08						
2	RELEASE FOR BID	CDB	CDB	DAM	01-15-09						
3	ISSUED FOR CONSTRUCTION	CDB	CDB	DAM	03-30-09						
4	AS-BUILT	CDB	CDB	DAM	07-16-10						

DESIGN INFORMATION	
SIZE	STRINGING TENSION
CONDUCTOR	1272 MCM 45/7 ACSR
OPGW	AC-71/571

DESIGN INFORMATION	
DESIGN RULING SPAN	ACTUAL RULING SPAN
800	0

DESIGN BY:	DATE
DAM/CDB	08-08-08
DRAWN BY:	DATE
CDB	08-08-08
DESIGN CHK:	DATE
SW/ULTEIG	08-08-08
DRAFT CHK:	
APPROVED:	DATE
DAM	09-05-08

FACILITY:	
LOCATION UNIT:	SCALE:
TRANSMISSION SYSTEM MAINTENANCE	AS SHOWN
181-230KV LINE-RHAME SUBSTATION TO BELFIELD SUBSTATION	COUNTY NAME:
	STARK
	BASIN DRAWING NO.:
	181-090-T3-070
	REV.:
	4

BASIN ELECTRIC POWER COOPERATIVE	
1717 EAST INTERSTATE AVENUE	
BISMARCK, NORTH DAKOTA	
PHONE 701-223-0441	

PRINTED: 07/16/2010