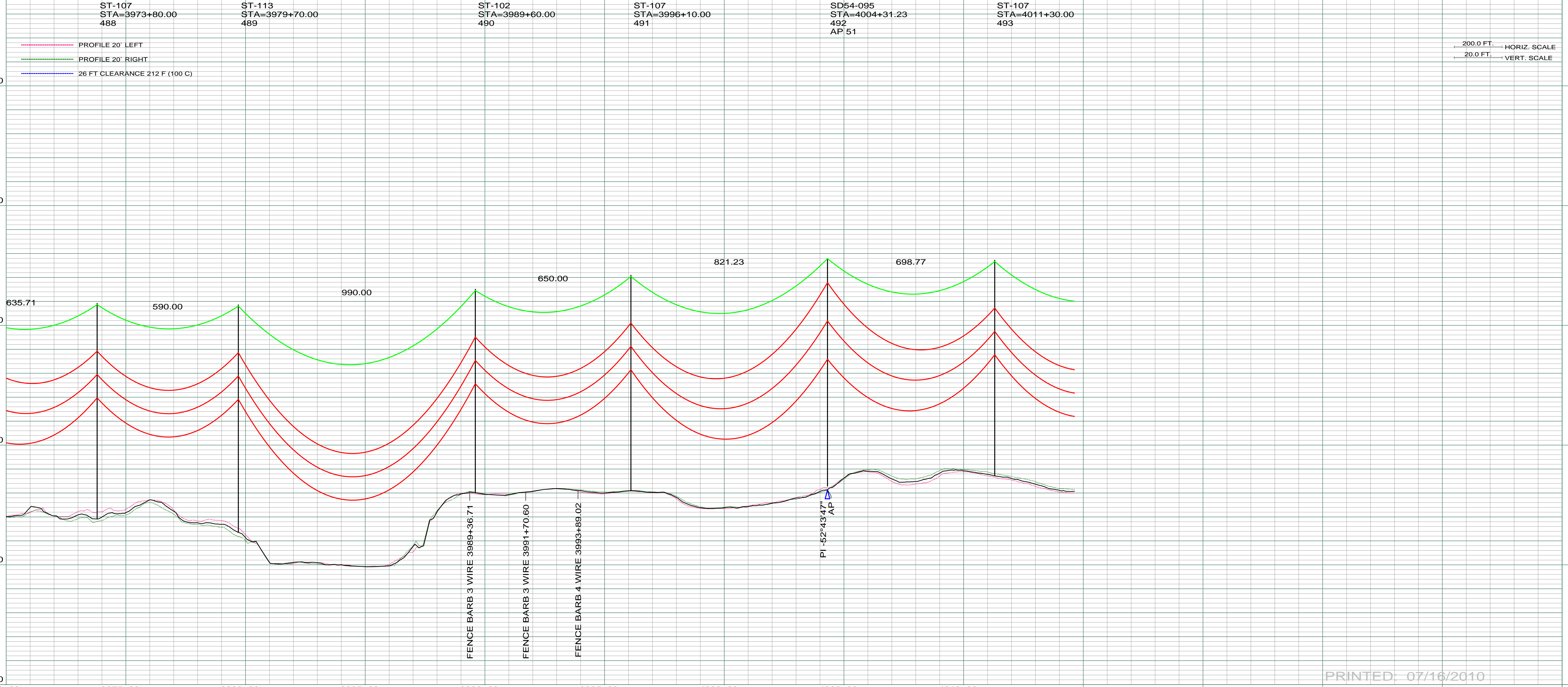


1240
 GEORGE C. & REGINA M. SCHMIDT
 (LIFE ESTATE)
 N1/2 SW1/4 SEC. 17-T138N-R98W
 CENTERLINE LENGTH 6339.89'-
 384.24 RODS-18.19 ACRES



DATE OF AERIAL PHOTOGRAPHY
 NOVEMBER 08, 2007
 GEODIGITAL INTERNATIONAL



200.0 FT. HORIZ. SCALE
 20.0 FT. VERT. SCALE

PRINTED: 07/16/2010

REV	DESCRIPTION	DRWN	DSGN	APPD	DATE	REV	DESCRIPTION	DRWN	DSGN	APPD	DATE
1	ISSUE TO PUBLIC SERVICE COMMISSION	CDB	CDB	DAM	08-08-08						
2	RELEASE FOR BID	CDB	CDB	DAM	01-15-09						
3	ISSUED FOR CONSTRUCTION	CDB	CDB	DAM	03-30-09						
4	AS-BUILT	CDB	CDB	DAM	07-16-10						

STATE NAME: NORTH DAKOTA		NAD83 NDSPCS INTL FT SOUTH ZONE	
DESIGN BY:	DAM/CDB	08-08-08	
DRAWN BY:	CDB	08-08-08	
DESIGN CHK:	SW/ULTEIG	08-08-08	
DRAFT CHK:			
APPROVED:	DAM	09-05-08	

DESIGN INFORMATION	
CONDUCTOR	1272 MCM 45/7 ACSR
OPGW	AC-71/571
STRINGING TENSION	
NESC TENSION	0
DESIGN RULING SPAN	800
ACTUAL RULING SPAN	0

FACILITY: TRANSMISSION SYSTEM MAINTENANCE	
LOCATION UNIT:	181-230KV LINE-RHAME SUBSTATION TO BELFIELD SUBSTATION
RHAME TO BELFIELD 230KV TRANSMISSION LINE	
SCALE:	AS SHOWN
COUNTY NAME:	STARK
BASIN DRAWING NO.	181-090-T3-074
REV.	4