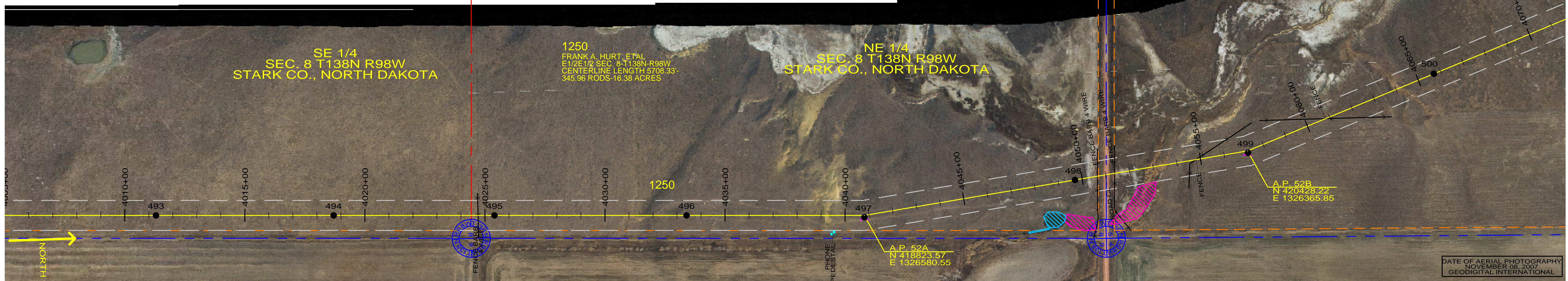


SE 1/4
SEC. 8 T138N R98W
STARK CO., NORTH DAKOTA

1250
FRANK A. HURT, ET AL
E1/2E1/2 SEC. 8 T138N R98W
CENTERLINE LENGTH 5708.33'
345.96 RODS-16.38 ACRES

NE 1/4
SEC. 8 T138N R98W
STARK CO., NORTH DAKOTA



DATE OF AERIAL PHOTOGRAPHY
NOVEMBER 08, 2007
GEODIGITAL INTERNATIONAL

ST-107
STA=4011+30.00
493

ST-113
STA=4018+70.00
494

ST-113
STA=4025+40.00
495

ST-118
STA=4033+40.00
496

SA10D-100
STA=4040+80.00
497
AP 52A
OPGW DE

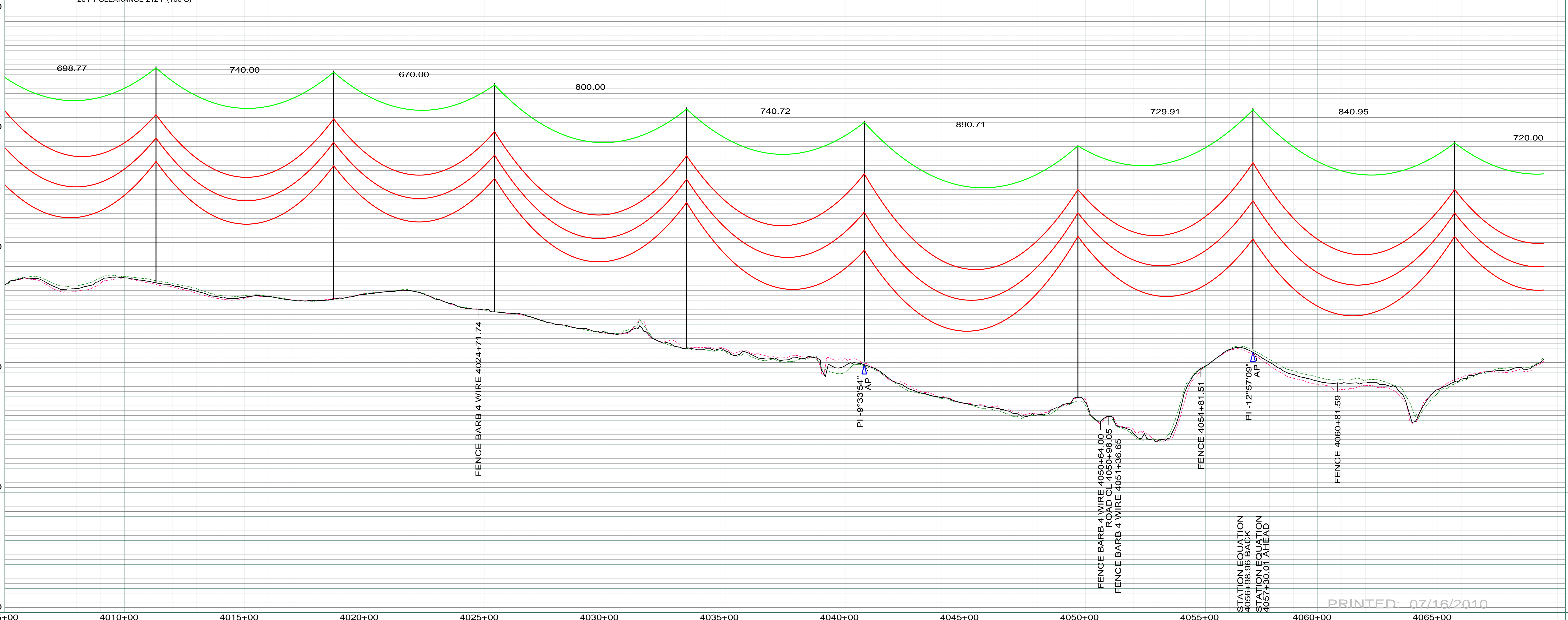
ST-124
STA=4049+70.00
498

SA16-100
STA=4056+98.95
499
AP 52B

ST-118
STA=4065+70.00
500

--- PROFILE 20' LEFT
--- PROFILE 20' RIGHT
--- 26 FT CLEARANCE 212 F (100 C)

200.0 FT. HORIZ. SCALE
20.0 FT. VERT. SCALE



PRINTED: 07/16/2010

REV	DESCRIPTION	DRWN	DSGN	APPD	DATE	REV	DESCRIPTION	DRWN	DSGN	APPD	DATE
1	ISSUE TO PUBLIC SERVICE COMMISSION	CDB	CDB	DAM	08-08-08						
2	RE-ROUTE NE-1/4 8-138-98 & SE-1/4 5-138-98, RELEASE FOR BID	CDB	CDB	DAM	01-15-09						
3	ISSUED FOR CONSTRUCTION	CDB	CDB	DAM	03-30-09						
4											

DESIGN INFORMATION		DESIGN BY:	DATE
CONDUCTOR	1272 MCM 45/7 ACSR	DAM/CDB	08-08-08
OPGW	AC-71/571	CDB	08-08-08
		DESIGN CHK:	08-08-08
		DRAFT CHK:	
		APPROVED:	09-05-08

FACILITY:		LOCATION UNIT:
TRANSMISSION SYSTEM MAINTENANCE		181-230KV LINE-RHAME SUBSTATION TO BELFIELD SUBSTATION
RHAME TO BELFIELD 230KV TRANSMISSION LINE		
PLAN AND PROFILE		
MILE 69 & 70		

SCALE: AS SHOWN	COUNTY NAME: STARK
BASIN DRAWING NO. 181-090-T3-075	REV. 4