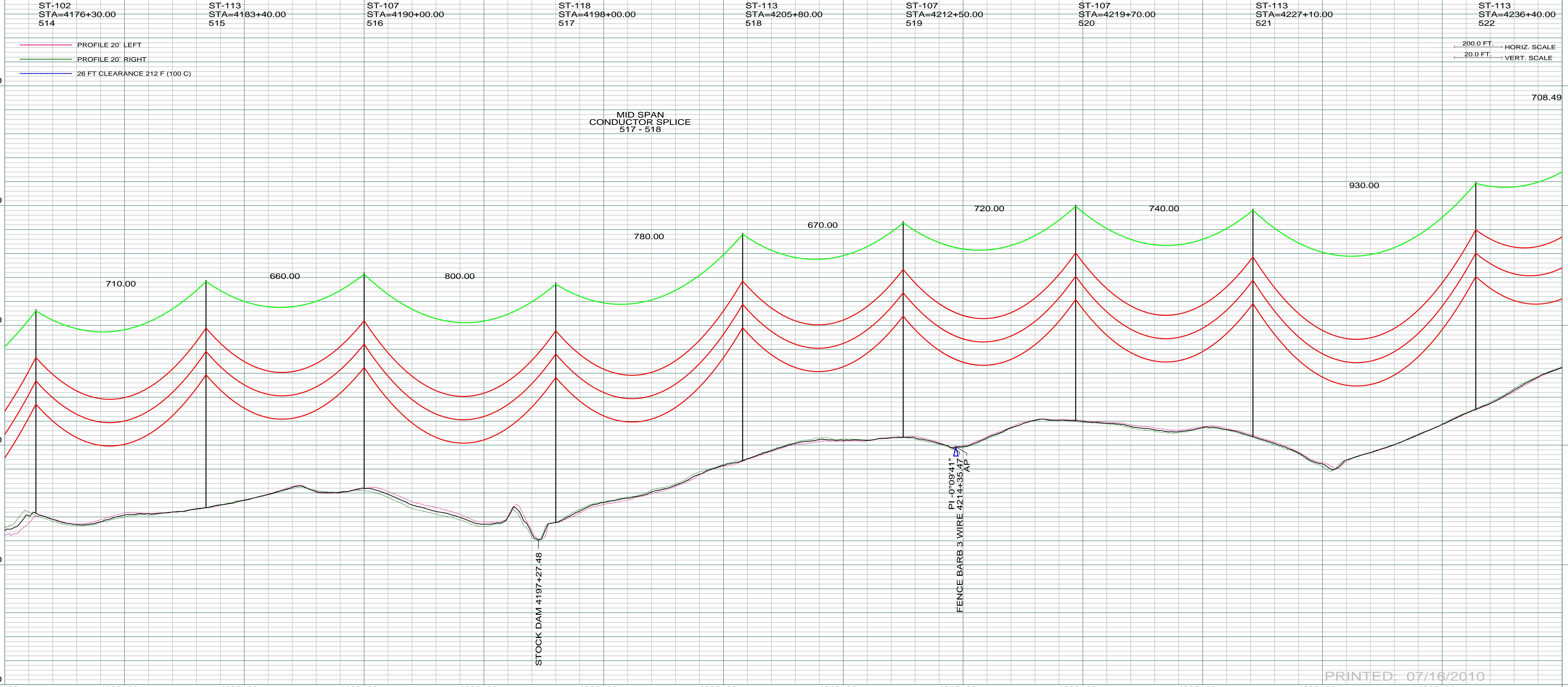
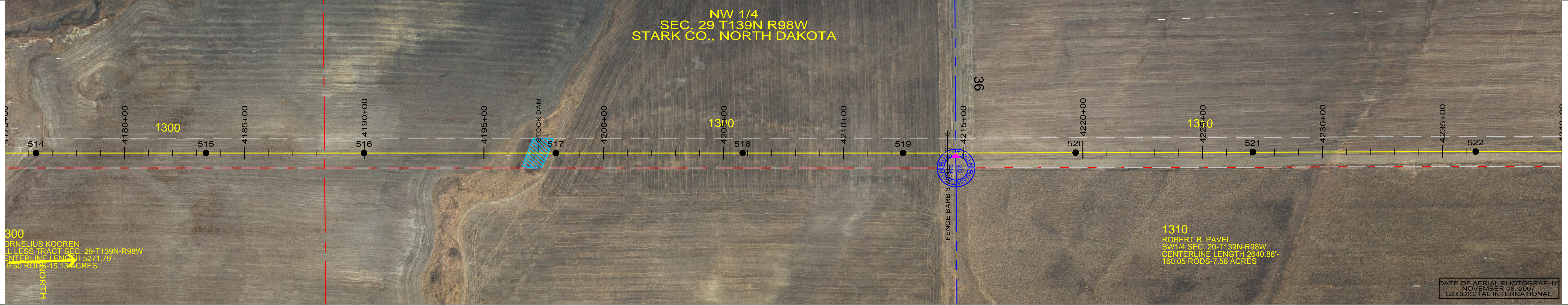


NW 1/4
SEC. 29 T139N R98W
STARK CO., NORTH DAKOTA



DATE OF AERIAL PHOTOGRAPHY
NOVEMBER 08, 2007
GEODIGITAL INTERNATIONAL

ST-102 STA=4176+30.00 514	ST-113 STA=4183+40.00 515	ST-107 STA=4190+00.00 516	ST-118 STA=4198+00.00 517	ST-113 STA=4205+80.00 518	ST-107 STA=4212+50.00 519	ST-107 STA=4219+70.00 520	ST-113 STA=4227+10.00 521	ST-113 STA=4236+40.00 522
---------------------------------	---------------------------------	---------------------------------	---------------------------------	---------------------------------	---------------------------------	---------------------------------	---------------------------------	---------------------------------

--- PROFILE 20' LEFT
--- PROFILE 20' RIGHT
--- 26 FT CLEARANCE 212 F (100 C)

200.0 FT. HORIZ. SCALE
20.0 FT. VERT. SCALE

PRINTED: 07/16/2010

REV	DESCRIPTION	DRWN	DSGN	APPD	DATE	REV	DESCRIPTION	DRWN	DSGN	APPD	DATE	STATE NAME: NORTH DAKOTA	NAD83 NDSPCS INTL FT SOUTH ZONE	DESIGN BY: DAM/CDB	08-08-08	FACILITY: TRANSMISSION SYSTEM MAINTENANCE	<p>BASIN ELECTRIC POWER COOPERATIVE 1717 EAST INTERSTATE AVENUE BISMARCK, NORTH DAKOTA PHONE 701-223-0441</p>	COUNTY NAME: STARK	
1	ISSUE TO PUBLIC SERVICE COMMISSION	CDB	CDB	DAM	08-08-08							DESIGN INFORMATION	DESIGNED BY: CDB	08-08-08	LOCATION UNIT: 181-230KV LINE-RHAME SUBSTATION TO BELFIELD SUBSTATION	SCALE: AS SHOWN			
2	RELEASE FOR BID	CDB	CDB	DAM	01-15-09							CONDUCTOR	1272 MCM 45/7 ACSR	0	800	0		DESIGN CHK: SW/ULTEIG	08-08-08
3	ISSUED FOR CONSTRUCTION	CDB	CDB	DAM	03-30-09							OPGW	AC-71/571	0				DRAFT CHK:	
4	AS-BUILT	CDB	CDB	DAM	07-16-10									APPROVED: DAM	09-05-08		BASIN DRAWING NO. 181-090-T3-078	REV. 4	