

**DAKOTA GASIFICATION COMPANY**

A BASIN ELECTRIC SUBSIDIARY

GREAT PLAINS SYNFUELS PLANT  
420 COUNTY ROAD 26  
BEULAH, NORTH DAKOTA 58523-9400  
PHONE: 701/873-2100  
FAX: 701/873-6404



May 8, 2008

RECEIVED

MAY 09 2008

PUBLIC SERVICE COMMISSION

Ms. Ilona Jeffcoat-Sacco  
Executive Secretary  
Public Service Commission  
State Capital Building  
600 East Boulevard Avenue  
Bismarck, ND 58505-0480

Dear Ms. Jeffcoat-Sacco:

Dakota Gasification Company (DGC) recently completed planting 30 trees in the US Army Corps of Engineers (Corps) downstream campground near Garrison Dam. The tree planting complies with Order #18 for Case No. PU-07-184 for the DGC Lake Sakakawea CO<sub>2</sub> pipeline crossing.

During construction of the pipeline, 15 trees (Green Ash/Poplar) were removed from the staging area on the north bank of Lake Sakakawea (Figures 1 and 2). The Corps requested DGC plant replacement trees in the downstream campground. S & B Landscaping & Nursery from Bismarck, North Dakota, in conjunction with the Corps, planted 15 Ohio Buckeye (4 feet) and 15 Amur Maples (6 to 8 feet) in the campground. Figure 3 identifies the tree planting locations.

If you have any questions or need additional information about the replacement trees, please contact me at (701) 873-6613.

Sincerely,

Rick A. Nelson, P.E.  
Senior Environmental Engineer

ran/plo  
ENCLOSURE  
c: 9850-RAN-08-019

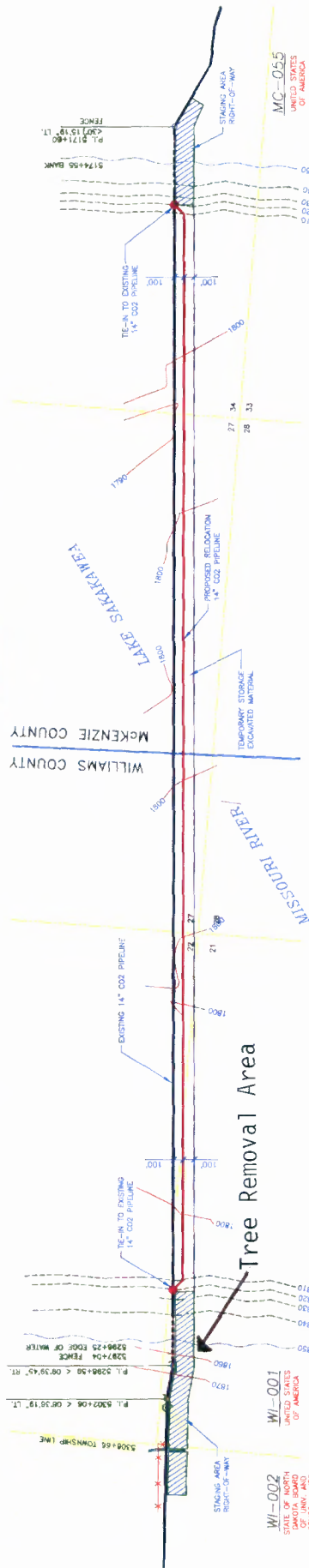
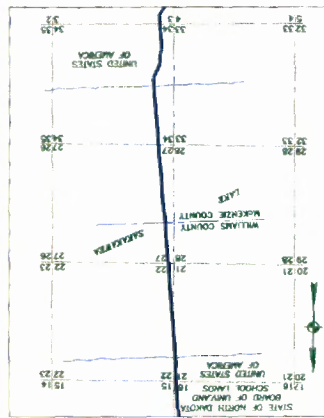
31 PU-07-184 Filed: 5/9/2008 Pages: 4  
Letter regarding Replacement Tree Planting in  
Compliance with Order #18

Dakota Gasification Company  
Sr. Environmental Engineer, Rick Nelson

Equal  
Employment  
Opportunity  
Employer



AREA MAP  
SCALE: N.T.S.



PLAN  
SCALE: 1"=500'

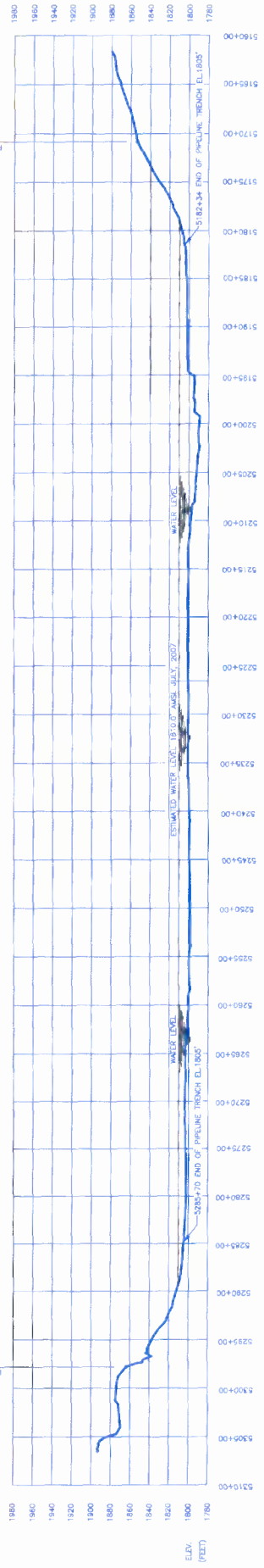
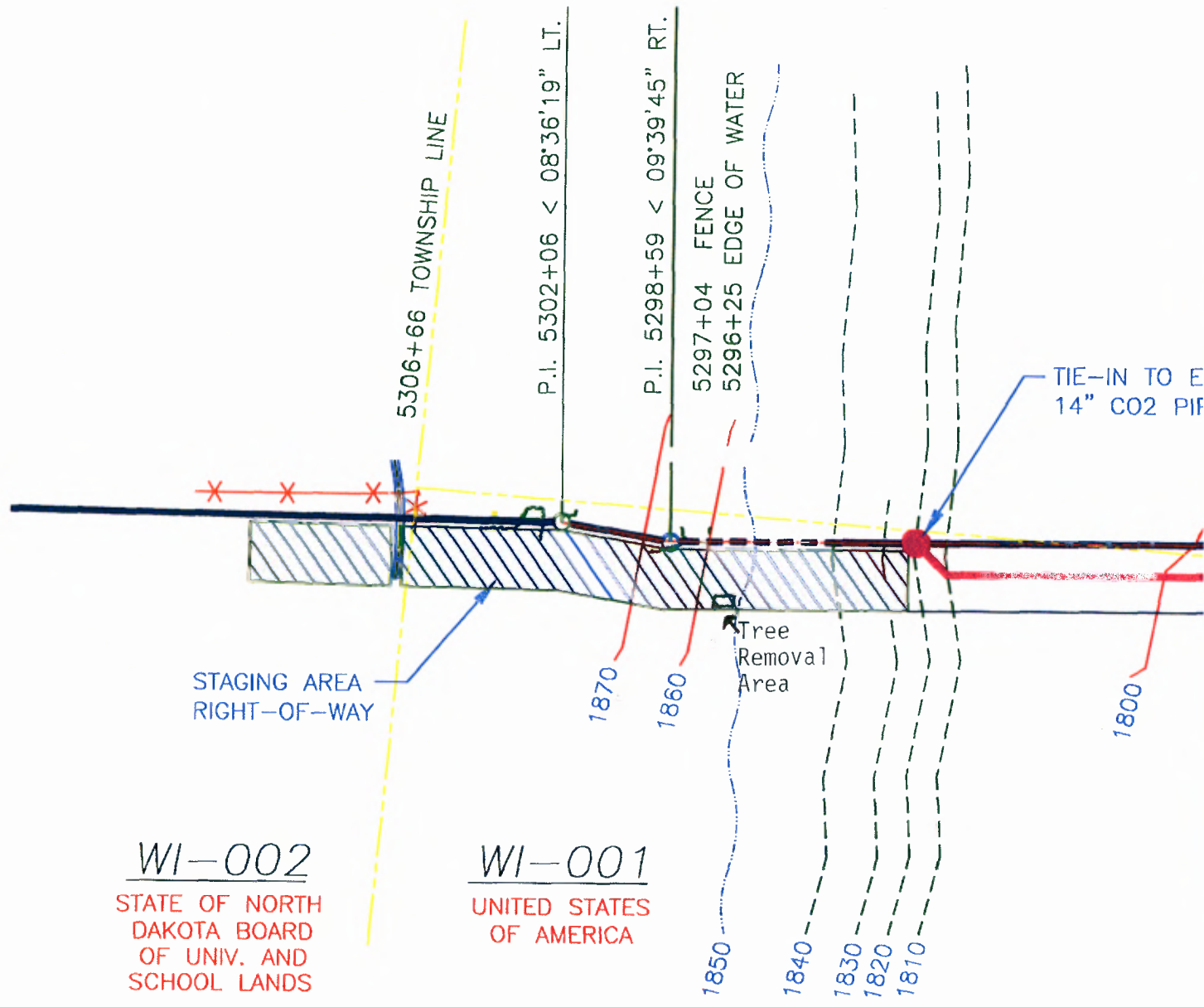


FIGURE 1  
TREE REMOVAL LOCATION (PU-07-184)



WI-002  
STATE OF NORTH  
DAKOTA BOARD  
OF UNIV. AND  
SCHOOL LANDS

WI-001  
UNITED STATES  
OF AMERICA

FIGURE 2  
TREE REMOVAL LOCATION (PU-07-184)

P.I. 5298+59

1980					
1960					
1940					

Missouri River

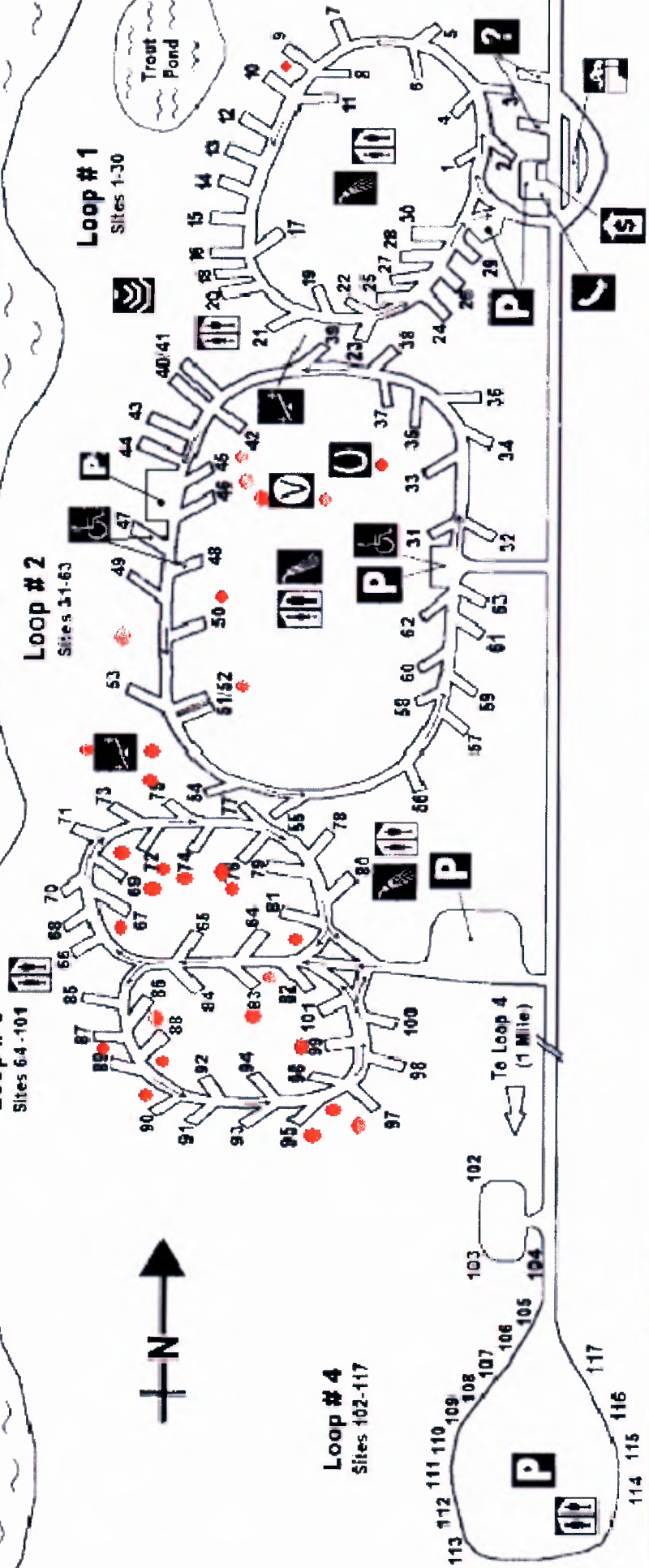


**Loop #3**  
Sites 64-104

**Loop #2**  
Sites 31-63

**Loop #1**  
Sites 1-30

**Loop #4**  
Sites 102-117



## Downstream Campground

### KEY


Horseshoe & Volleyball Equipment is Available for Checkout

Cans Collected for Recycling can be Traded in at Fee Booth for Candy

FIGURE 3  
TREE PLANTING LOCATIONS (PU-07-184)