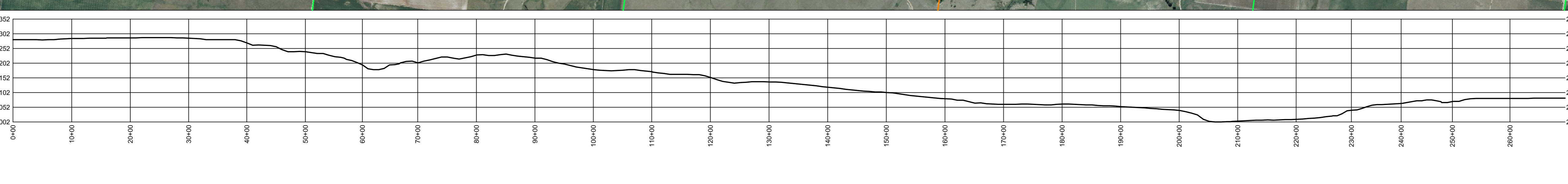
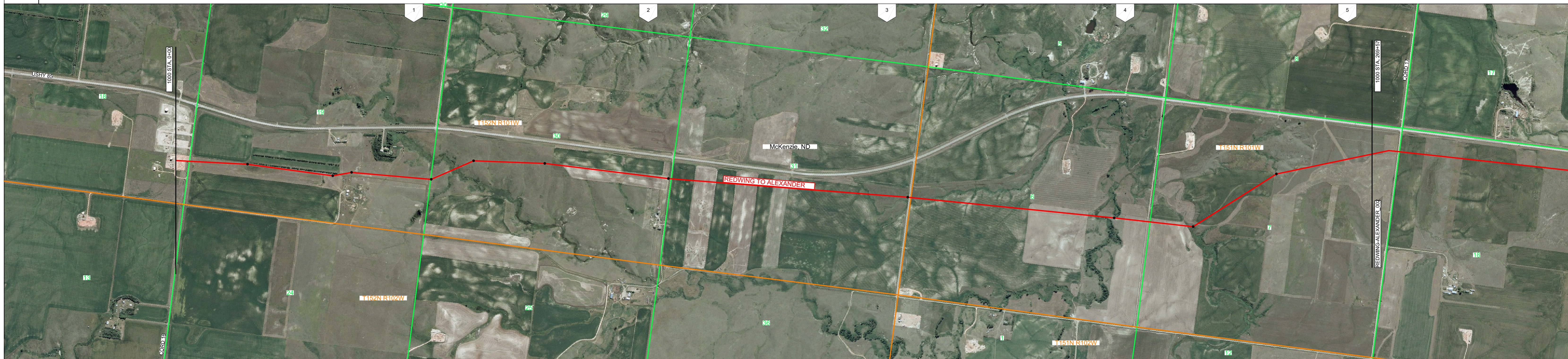


OWNER-SHIP

CROSSINGS

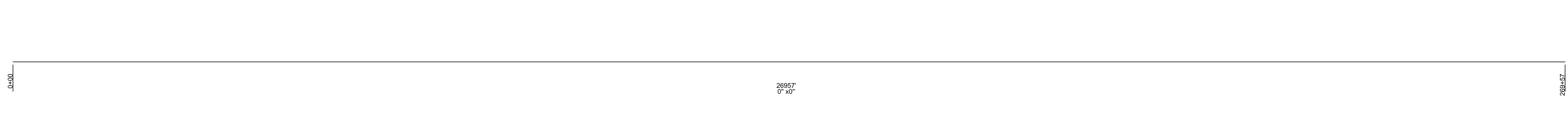
ROUTING NOTES

SURVEY NOTES



PIPE FEATURES

MATERIAL DETAIL



LEGEND	
—	SECTION LINE
—	RAILROAD
—	DRAINAGE
—	FENCE
—	ROAD
—	BURIED CABLE
—	POWER LINE
—	TOP OF BANK
—	TELEPHONE LINE
—	OVERHEAD POWER LINE
—	FOREIGN LINE
—	PROPERTY LINE
—	BURIED WATER LINE
—	TILE
▲	STATION EQUATION
○	RIVER WEIGHT
○	ORP
○	METER
○	REGULATOR
○	CASING
○	CATHODIC PROTECTION
○	TEST LEAD
○	REDUCER
○	SERIAL MARKER
○	RECEIVER
○	LAUNCHER
○	TAPTEE
○	PIG SIGNAL
○	PIPE INFLECTION
○	WELD CAP

PIPE DETAIL	
0+00	269+57 0" x 0" (26957)
COATING DETAIL	
0+00	269+57 UNKNOWN (26957)

**REDWING TO ALEXANDER**  
MCKENZIE COUNTY, ND

T152N R101W  
T151N R101W

Scale: 1" = 1000'

Generate Date: 6/25/2005 11:14:12 AM

Line Number: REDWING-ALEXANDER

Sheet Number: 1 of 6