

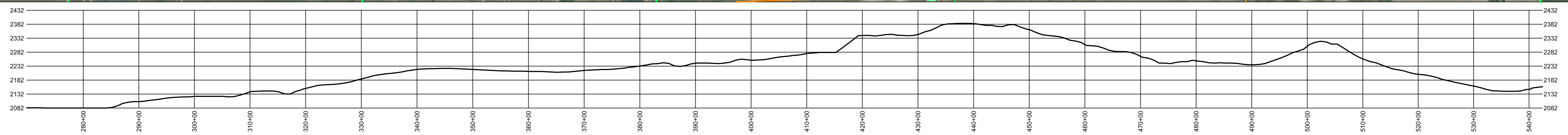
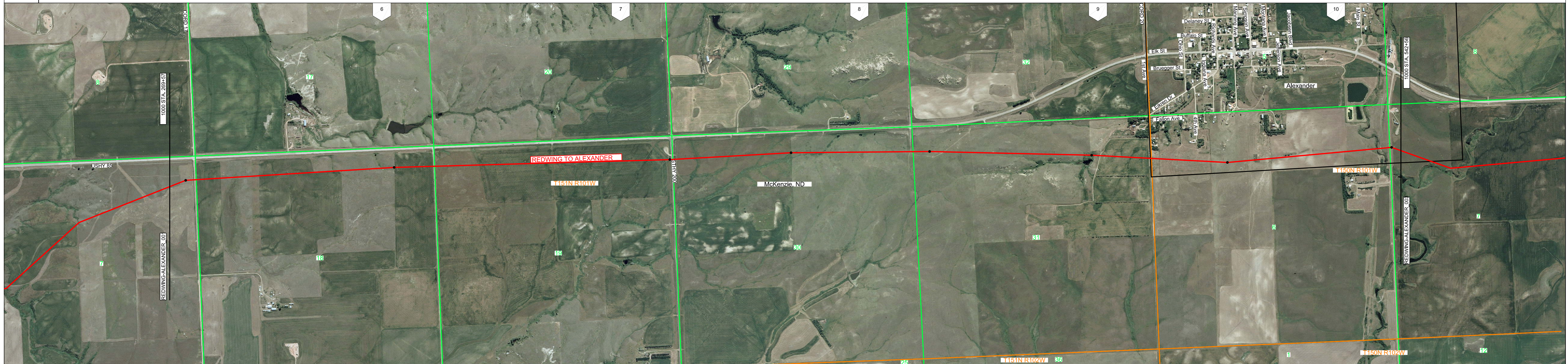
OWNER-SHIP

CROSSINGS

ROUTING NOTES

SURVEY NOTES

275+40	SECTION LINE 18	275+40 ROAD
284+00		284+00 DRAW
319+52	PI INFLECTION	
328+30	SECTION LINE 19	328+30 ROAD
381+00	SECTION LINE 30	381+00 STATE HIGHWAY 200
386+25		386+25 DRAW
393+75		393+75 DRAW
407+45		407+45 DRAW
414+50		414+50 DRAW
433+70	SECTION LINE 31	433+70 ROAD
441+25		441+25 ROAD
475+70	PI INFLECTION	
486+75	SECTION LINE 6	486+75 ROAD
509+85	PI INFLECTION	
540+37	SECTION LINE 7	540+37 PI INFLECTION
537+10		LONESOME CREEK
537+90		BURLINGTON
538+00		HERRIN RR
539+90		ROAD



PIPE FEATURES

MATERIAL DETAIL

LEGEND	
—	SECTION LINE
—	RAILROAD
—	DRAINAGE
—	FENCE
—	ROAD
—	BURIED CABLE
—	POWER LINE
—	TOP OF BANK
—	TELEPHONE LINE
—	OVERHEAD POWER LINE
—	FOREIGN LINE
—	PROPERTY LINE
—	BURIED WATER LINE
—	TILE
+	STATION EQUATION
+	RIVER WEIGHT
+	ORP
+	VALVE
+	METER
+	REGULATOR
+	GASING
+	CATHODIC PROTECTION
+	TEST LEAD
+	REDUCER
+	SERIAL MARKER
+	RECEIVER
+	LAUNCHER
+	TAPTEE
+	PIG SIGNAL
+	PIE INFLECTION
+	WELD CAP

PIPE DETAIL	
269+57	542+56 0"x0" (27299)
COATING DETAIL	
269+57	542+56 UNKNOWN, (27299)

TRUE

REDWING TO ALEXANDER
MCKENZIE COUNTY, ND

T151N R101W
T150N R101W

Scale: 1" = 1000'

Generate Date: 6/27/2005 9:20:00 AM

Line Number: REDWING-ALEXANDER

Sheet Number: 2 of 6