

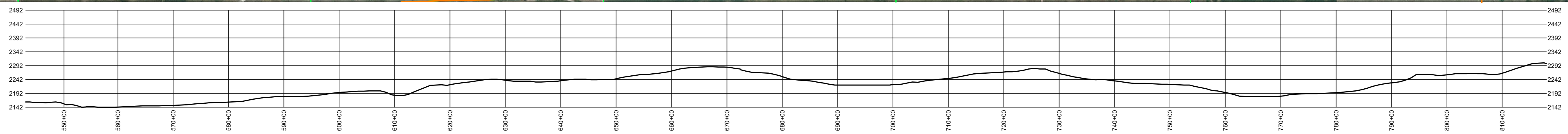
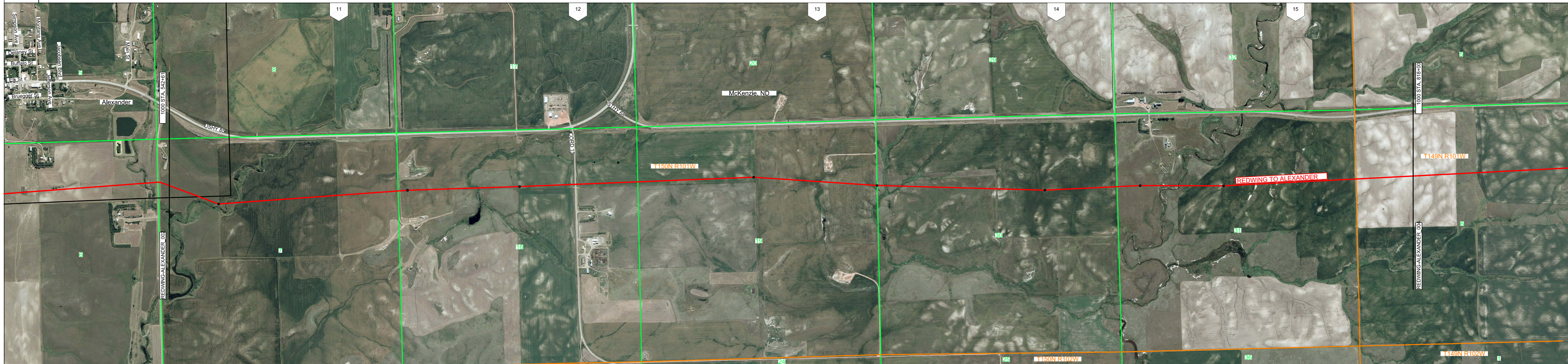
OWNER-SHIP

CROSSINGS

ROUTING NOTES

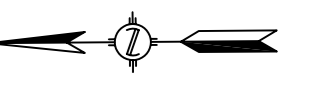
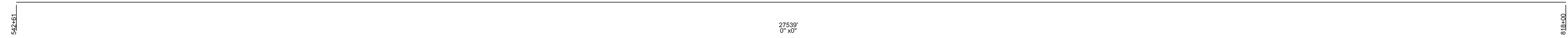
SURVEY NOTES

554+22 PINFLECTION	559+00 CREEK	565+00 DITCH	589+98 SECTION LINE	599+40 ROAD	609+72 PINFLECTION	611+60 CREEK	633+10 CORD 15	646+75 SECTION LINE	672+39 PINFLECTION	688+60 DRAW	699+64 PINFLECTION	699+40 ROAD	701+40 DRAW	705+00 DRAW	737+35 GAS PIPELINE	752+05 SECTION LINE	759+60 ROAD	768+15 ANTELOPE CREEK	776+10 PINFLECTION	805+30 SECTION LINE 6
--------------------	--------------	--------------	---------------------	-------------	--------------------	--------------	----------------	---------------------	--------------------	-------------	--------------------	-------------	-------------	-------------	---------------------	---------------------	-------------	-----------------------	--------------------	-----------------------



PIPE FEATURES

MATERIAL DETAIL



LEGEND	
—	SECTION LINE
—	RAILROAD
—	DRAINAGE
—	FENCE
—	ROAD
—	BURIED CABLE
—	POWER LINE
—	TOP OF BANK
—	TELEPHONE LINE
—	OVERHEAD POWER LINE
—	FOREIGN LINE
—	PROPERTY LINE
—	BURIED WATER LINE
—	TILE
▲	STATION EQUATION
○	RIVER WEIGHT
○	ORP
○	VALVE
○	METER
○	REGULATOR
○	CASING
○	CATHODIC PROTECTION
○	TEST LEAD
○	REDUCER
○	GENERAL MARKER
○	RECEIVER
○	LAUNCHER
○	TAPTEE
○	PIG SIGNAL
○	PIPE INFLECTION
○	WELD CAP

PIPE DETAIL	
542+61	818+00 0"x0" (27539)
COATING DETAIL	
542+61	818+00 UNKNOWN, (27539)

REDWING TO ALEXANDER
MCKENZIE COUNTY, ND

T150N R101W
T149N R101W

Scale: 1" = 1000'

Generate Date: 6/27/2005 9:21:10 AM	Line Number: REDWING-ALEXANDER	Sheet Number: 3 of 6
--	-----------------------------------	-------------------------