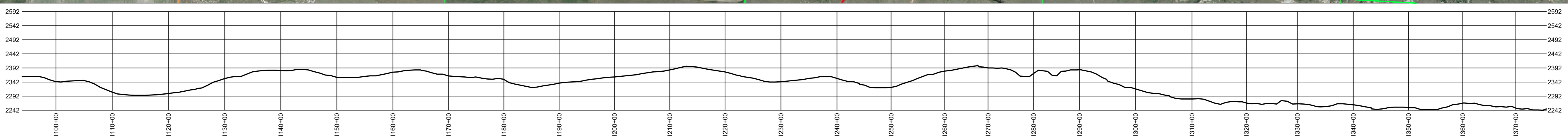
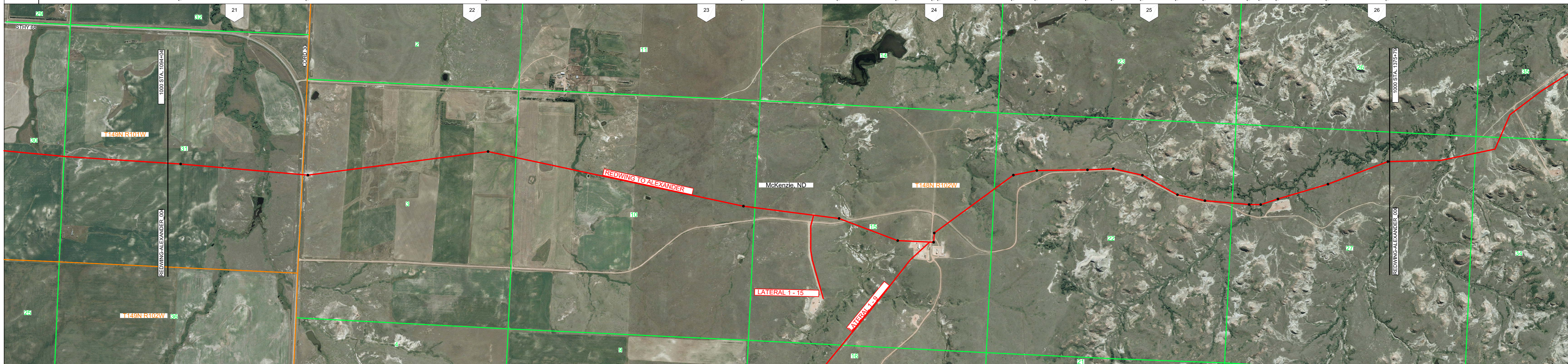


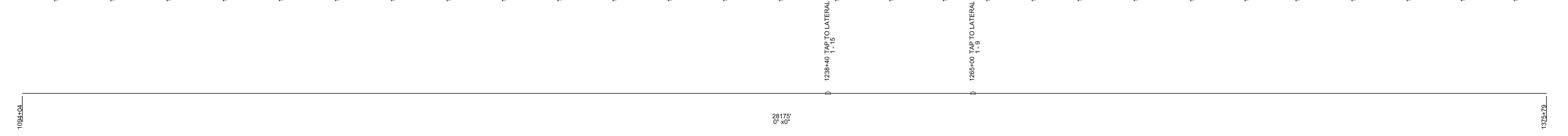
OWNER-SHIP  
ROUTING NOTES  
SURVEY NOTES  
CROSSINGS

1094+86 PIPE INFLECTION  
1125+06 PIPE INFLECTION  
1165+15 PIPE INFLECTION  
1222+76 PIPE INFLECTION  
1244+05 PIPE INFLECTION  
1257+48 PIPE INFLECTION  
1265+85 PIPE INFLECTION  
1267+85 PIPE INFLECTION  
1284+30 PIPE INFLECTION  
1289+55 PIPE INFLECTION  
1294+84 PIPE INFLECTION  
1306+02 PIPE INFLECTION  
1311+71 PIPE INFLECTION  
1318+30 PIPE INFLECTION  
1327+17 PIPE INFLECTION  
1333+38 PIPE INFLECTION  
1343+16 PIPE INFLECTION  
1345+76 PIPE INFLECTION  
1349+75 PIPE INFLECTION  
1381+26 PIPE INFLECTION  
1375+39 PIPE INFLECTION

1116+30 DRAW  
1123+70 STATE HIGHWAY 68  
1137+20 ROAD  
1154+35 ROAD  
1171+50 SECTION LINE  
1185+10 DRAW  
1188+00 ROAD  
1228+13 DRAW  
1245+05 ROAD  
1247+60 BOXLINE CREEK  
1265+18 ROAD  
1266+35 ROAD  
1267+00 ROAD  
1274+84 ROAD  
1278+15 DRAW  
1284+45 DRAW  
1343+35 DRAW  
1354+40 DRAW



PIPE FEATURES  
MATERIAL DETAIL



**LEGEND**

—	SECTION LINE	+	STATION EQUATION
—	RAILROAD	○	RIVER WEIGHT
—	DRAINAGE	○	ORP
—	FENCE	+	VALVE
—	ROAD	+	METER
—	BURIED CABLE	+	REGULATOR
—	POWER LINE	+	GASING
—	TOP OF BANK	+	CATHODIC PROTECTION
—	TELEPHONE LINE	+	TEST LEAD
—	OVERHEAD POWER LINE	+	REDUCER
—	FOREIGN LINE	+	NERAL MARKER
—	PROPERTY LINE	+	RECEIVER
—	BURIED WATER LINE	+	LAUNCHER
—	TILE	+	TAPTEE
+		+	PIG SIGNAL
+		+	PIPE INFLECTION
+		+	WELD CAP

PIPE DETAIL	
1094+04	1375+79 0"x0" (28175')
COATING DETAIL	
1094+04	1375+79 UNKNOWN (28175')

**REDWING TO ALEXANDER**  
MCKENZIE COUNTY, ND

T148N R101W  
T148N R102W

Scale: 1" = 1000'

Generate Date: 6/25/2005 10:39:56 AM

Line Number: REDWING-ALEXANDER

Sheet Number: 5 of 6