

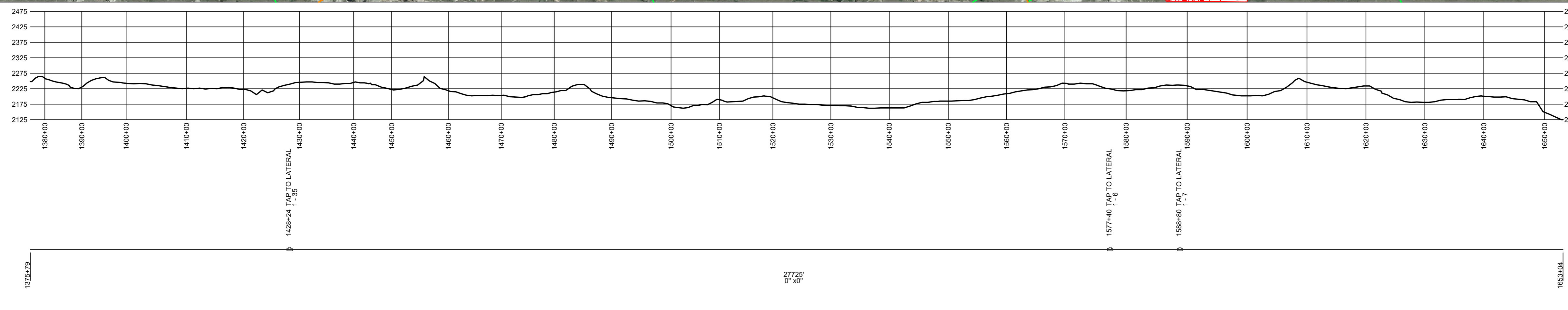
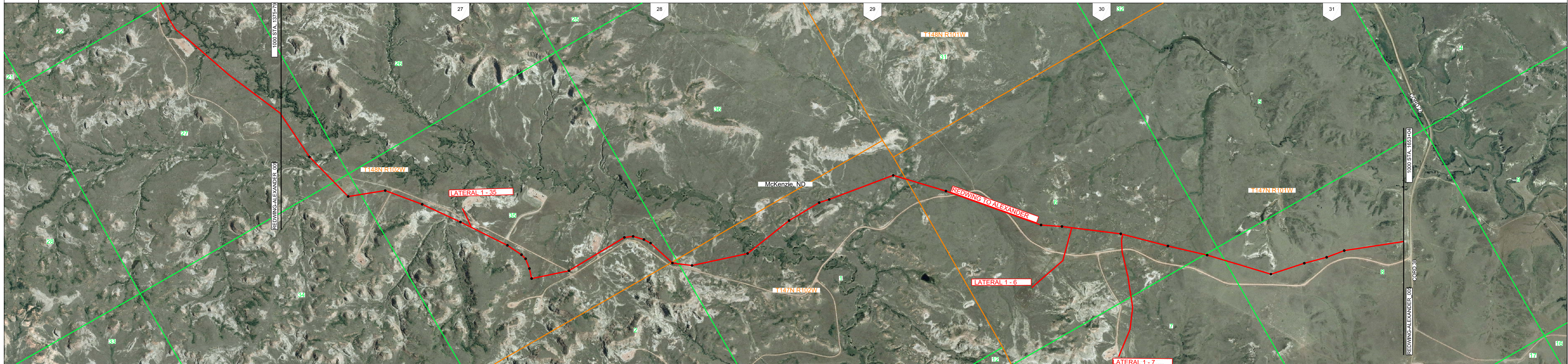
OWNER-SHIP

CROSSINGS

ROUTING NOTES

SURVEY NOTES

1389+15 DRAW 1391+00 ROAD	1394+90 SECTION LINE 34	1402+00 SECTION LINE 35	1409+00 ROAD	1422+96 DRAW	1452+00 SECTION LINE 2 1463+70 SECTION LINE 1	1454+60 ROAD	1462+55 ROAD	1501+50 BOWLINE CREEK 1504+40 DRAW 1507+50 DRAW 1519+30 DRAW	1524+75 DRAW	1537+25 DRAW 1541+85 DRAW	1559+70 ROAD	1562+05 ROAD	1570+45 SECTION LINE 6	1570+45 PI INFLECTION 1575+17 PI INFLECTION	1588+25 PI INFLECTION	1596+02 PI INFLECTION	1607+44 SECTION LINE 7 1612+00 SECTION LINE 8	1622+69 PI INFLECTION	1639+45 PI INFLECTION	1635+56 PI INFLECTION	1639+71 PI INFLECTION	1659+04 END PIPE ROUTE
------------------------------	----------------------------	----------------------------	--------------	--------------	--	--------------	--------------	---	--------------	------------------------------	--------------	--------------	------------------------	--	-----------------------	-----------------------	--	-----------------------	-----------------------	-----------------------	-----------------------	------------------------



LEGEND	
—	SECTION LINE
—	RAILROAD
—	DRAINAGE
—	FENCE
—	ROAD
—	BURIED CABLE
—	POWER LINE
—	TOP OF BANK
—	TELEPHONE LINE
—	OVERHEAD POWER LINE
—	FOREIGN LINE
—	PROPERTY LINE
—	BURIED WATER LINE
—	TILE
▲	STATION EQUATION
■	RIVER WEIGHT
○	ORP
○	VALVE
○	METER
○	REGULATOR
○	GASING
○	CATHODIC PROTECTION
○	TEST LEAD
○	REDUCER
○	GENERAL MARKER
○	RECEIVER
○	LAUNCHER
○	TAPTEE
○	PIG SIGNAL
○	PIPE INFLECTION
○	WELD CAP

PIPE DETAIL	
1375+79	1653+04 0"x0" (27725')
COATING DETAIL	
1375+79	1653+04 UNKNOWN, (27725')

REDWING TO ALEXANDER
MCKENZIE COUNTY, ND

T148N R102W
T147N R102W
T147N R101W

Scale: 1" = 1000'

Generate Date: 6/25/2005 12:21:13 PM

Line Number: REDWING-ALEXANDER

Sheet Number: 6 of 6