

BELLE FOURCHE PIPELINE COMPANY

RECEIVED

NOV 04 2008

PUBLIC SERVICE COMMISSION

Reply to:
P.O. Drawer 2360 (82602)
455 North Poplar
Casper, WY 82601
Phone: (307) 237-9301
Fax: (307) 266-0357

Environmental Division
Bob Dundas P.G, Environmental Coordinator
Kate Forsting, Assistant Environmental Coordinator

October 31, 2008

Kim Grotte
U.S. Forest Service
McKenzie Ranger District
1901 S. Main Street
Watford City, ND 58854

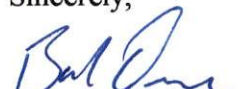
RE: Alex Loop Tree/Shrub Replanting

Dear Mr. Grotte:

Attached for your review and comment is the proposed tree/shrub replanting plan that will be used along the Alex Loop pipeline right-of-way (MCK08001). The replanting will be performed by Ms. Cindy Geiger during the Spring 2009.

Please feel free to contact me in our Casper Office at (307) 266-0411 should you wish to discuss this matter in greater detail.

Sincerely,


Bob Dundas, P.G.

Environmental Coordinator

C: Patrick Fahn – ND PSC

File: BFPL Alex Loop

67 PU-07-596 Filed: 11/4/2008 Pages: 29
Proposed Tree - Shrub Replanting Plan for Alex
Loop

Tree and Shrub Mitigation Specifications

Inventory

1. Trees and shrubs anticipated to be cleared, including those that are considered invasive species or noxious weeds (e.g., *Caragana arborescens*, *Elaeagnus angustifolia*, *Rhamnus cathartica*, *Tamarix chinensis*, *T. parviflora*, *T. ramosissima*, *Ulmus pumila*), shall be inventoried before cutting. The inventory shall record the location, number, and species of trees and shrubs.
2. In windbreaks and shelterbelts, trees or shrubs anticipated to be cleared, regardless of size, shall be inventoried for replacement.
3. In non-windbreak and non-shelterbelt areas, trees anticipated to be cleared that are 1 inch diameter at breast height ("dbh") or greater shall be inventoried for replacement.
4. In non-windbreak and non-shelterbelt areas, shrubs anticipated to be cleared in the permanent right-of-way shall be inventoried for replacement.
5. In non-windbreak and non-shelterbelt areas outside the permanent right-of-way, shrubs shall be cut flush with the surface of the ground, taking care to leave the naturally occurring seed bank and root stock intact. If soil disturbance is necessary, the native topsoil shall be preserved and replaced after construction. Shrubs shall be allowed to regenerate naturally where native topsoil is preserved and replaced. Where topsoil is not preserved and replaced, shrubs anticipated to be cleared shall be inventoried for replacement.

Clearing

6. Trees and shrubs shall be selectively cleared, leaving mature trees and shrubs intact where practical.

7. The width of clear cuts through woody areas shall be limited to 50 feet or less.
8. If the number of trees or shrubs actually cleared differs from the number inventoried, the difference shall be noted on the inventory.

Replacement

9. Prior to tree/shrub replacement, documentation identifying the number and variety of trees removed as well as the mitigation plan for the proposed number, variety, type, location and date of replacement plantings shall be filed with the North Dakota Public Service Commission (NSPSC) for approval.
10. Tree replacement shall be on a 2 to 1 basis with 2-year-old saplings. Shrub replacement shall be on a 2 to 1 basis with stem cuttings.
11. Trees and shrubs shall be replaced by the same species or similar species suitable for North Dakota growing conditions as recommended by the North Dakota Forest Service.
12. Tree and shrub replacement shall not be conducted within 25 feet of the pipeline(s) to facilitate visual inspections of the right-of-way in accordance with U.S. Department of Transportation safety regulations.
13. Landowners shall be given the option of having replacement trees/shrubs planted off the right-of-way on the landowner's property or waiving that requirement in writing and allowing those replacement trees/shrubs to be planted at alternative locations.
14. At the conclusion of the project, documentation identifying the actual number, variety, type, location and date of the replacement plantings shall be filed with the NDPSC.
15. Tree/shrub replacements shall be inspected once a year for three years, on about the anniversary of the plantings, and, on or shortly before

October 1 of each year, a report shall be submitted to the NDPSC documenting the condition of replacement planting and any woodlands work completed.



Tree Inventory Worksheet

Client: Belle Fourche Pipeline Company	Landowner: Federal	Section: See Notes
Date: 12-11-07	County: McKenzie	Township: See Notes
Data By: Heather Jandt	State: ND	Range: See Notes

Narrative Description of Stand and Landowners Objectives:
 Project: Alexander 8-inch Crude Oil Pipeline
 Starting Point: Bowline Junction = North Unit of the Little Missouri National Grasslands

Tree No.	Species	Location	DBH ¹	Condition ²	Notes
1.	Green Ash <i>Fraxinus pennsylvanic</i>	47 35 15.57678 N 103 37 22.61336 W	5.4"	P F G	T147N R102W Section 1 Spring Creek
		Approximately 3 miles NE of Bowline Junction			
2.	Green Ash <i>Fraxinus pennsylvanic</i>	47 35 15.50729 N 103 37 22.30355 W	3.8"	P F G	T147N R102W Section 1 Spring Creek
		Approximately 3 miles NE of Bowline Junction			
3.	Green Ash <i>Fraxinus pennsylvanic</i>	47 35 15.49526 N 103 37 22.23631 W	3.2"	P F G	T147N R102W Section 1 Spring Creek
		Approximately 3 miles NE of Bowline Junction			
4.	Green Ash <i>Fraxinus pennsylvanic</i>	47 35 14.08455 N 103 37 24.45677 W	13"	P F G	T147N R102W Section 1 Spring Creek
		Approximately 3 miles NE of Bowline Junction			
5.	Green Ash <i>Fraxinus pennsylvanic</i>	47 35 14.33879 N 103 37 25.16285 W	7"	P F G	T147N R102W Section 1 Spring Creek
		Approximately 3 miles NE of Bowline Junction			
6.	Green Ash <i>Fraxinus pennsylvanic</i>	47 35 15.02778 N 103 37 24.28658 W	39"	P F G	T147N R102W Section 1 Spring Creek
		Approximately 3 miles NE of Bowline Junction			
Tree No.	Species	Location	DBH ¹	Condition ²	Notes
7.	Eastern Cottonwood <i>Populus deltoides</i>	47 36 20.36097 N 103 39 13.86032 W	6.4"	P F G Not Cleared But Damaged	T148N R102W Section 27 Unnamed Tributary
		Approximately 5.13 miles NW of Bowline Junction			
8.	Eastern Cottonwood <i>Populus deltoides</i>	47 36 20.34491 N 103 39 13.66745 W	9.5"	P F G	T148N R102W Section 27 Unnamed Tributary
		Approximately 5.13 miles NW of Bowline Junction			
9.	Eastern Cottonwood <i>Populus deltoides</i>	47 36 20.61038 N 103 39 13.34584 W	14"	P F G	T148N R102W Section 27 Unnamed Tributary
		Approximately 5.13 miles NW of Bowline Junction			

Tree No.	Species	Location	DBH ¹	Condition ²	Notes
10.	American Elm <i>Ulmus americana</i>	47 36 52.16622 N 103 39 26.38484 W	5.4"	P F G	T148N R102W Section 27 Unnamed Tributary
		Approximately 5.77 miles NW of Bowline Junction			
Tree No.	Species	Location	DBH ¹	Condition ²	Notes
11.	American Elm <i>Ulmus americana</i>	47 36 52.94983 N 103 39 27.29330 W	3.8"	P F G	T148N R102W Section 27 Unnamed Tributary
		Approximately 5.79 mile NW of Bowline Junction, 100 ft NW of Inventory 10.			
Tree No.	Species	Location	DBH ¹	Condition ²	Notes
12.	Eastern Cottonwood <i>Populus deltoides</i>	47 37 02.30612 N 103 39 30.87705 W	16"	P F G	T148N R102W Section 27 Unnamed Tributary
		Approximately 0.18 miles NW of Inventory 10-11			
13.	American Elm <i>Ulmus americana</i>	47 37 02.32445 N 103 39 30.37094 W	4.5"	P F G	T148N R102W Section 27 Unnamed Tributary
		Approximately 0.18 miles NW of Inventory 10-11			
Tree No.	Species	Location	DBH ¹	Condition ²	Notes
14.	American Elm <i>Ulmus americana</i>	47 37 17.43703 N 103 39 28.99515 W	22.3"	P F G	T148N R102W Section 22
		Approximately 0.3 miles N of Inventory 12-13			
Tree No.	Species	Location	DBH ¹	Condition ²	Notes
15.	Green Ash <i>Fraxinus pennsylvanic</i>	47 42 57.70208 N 103 39 12.64392 W	14"	P F G	T149N R101W Section 19 Charbonneau Creek
		Approximately 0.32 miles SE of 21 st Street NW			
16.	Green Ash <i>Fraxinus pennsylvanic</i>	47 42 57.97260 N 103 39 12.22149 W	14.6"	P F G	T149N R101W Section 19 Charbonneau Creek
		Approximately 0.32 miles SE of 21 st Street NW			
17.	Green Ash <i>Fraxinus pennsylvanic</i>	47 42 58.47686 N 103 39 12.10033 W	9.5"	P F G	T149N R101W Section 19 Charbonneau Creek
		Approximately 0.32 miles SE of 21 st Street NW			
18.	Green Ash <i>Fraxinus pennsylvanic</i>	47 42 58.37135 N 103 39 12.34415 W	11.5"	P F G	T149N R101W Section 19 Charbonneau Creek
		Approximately 0.32 miles SE of 21 st Street NW			

Tree No.	Species	Location	DBH ¹	Condition ²	Notes
19.	Dropmore Elm <i>Ulmus pumila</i> 'Dropmore'	47 43 55.69945 N 103 39 21.12200 W	5"	P F G	T149N R101W Section 18
		Approximately 0.38 miles NE of 22 nd Street NW & Hwy 85			
20.	Dropmore Elm <i>Ulmus pumila</i> 'Dropmore'	47 43 55.73014 N 103 39 20.97747 W	7"	P F G	T149N R101W Section 18
		Approximately 0.38 miles NE of 22 nd Street NW & Hwy 85			
21.	Dropmore Elm <i>Ulmus pumila</i> 'Dropmore'	47 43 55.70201 N 103 39 20.89297 W	4.7"	P F G	T149N R101W Section 18
		Approximately 0.38 miles NE of 22 nd Street NW & Hwy 85			
22.	Dropmore Elm <i>Ulmus pumila</i> 'Dropmore'	47 43 55.73270 N 103 39 20.77658 W	7"	P F G	T149N R101W Section 18
		Approximately 0.38 miles NE of 22 nd Street NW & Hwy 85			
23.	Dropmore Elm <i>Ulmus pumila</i> 'Dropmore'	47 43 55.70912 N 103 39 20.68689 W	4.5"	P F G	T149N R101W Section 18
		Approximately 0.38 miles NE of 22 nd Street NW & Hwy 85			
24.	Dropmore Elm <i>Ulmus pumila</i> 'Dropmore'	47 43 55.74099 N 103 39 20.52672 W	10"	P F G	T149N R101W Section 18
		Approximately 0.38 miles NE of 22 nd Street NW & Hwy 85			
Tree No.	Species	Location	DBH ¹	Condition ²	Notes
25.	Dropmore Elm <i>Ulmus pumila</i> 'Dropmore'	47 44 04.72413 N 103 39 22.06102 W	4.7"	P F G	T149N R101W Section 7
		Approximately 0.42 miles NE of 22 nd Street NW & Hwy 85			
26.	Dropmore Elm <i>Ulmus pumila</i> 'Dropmore'	47 44 04.68136 N 103 39 21.98212 W	10.5"	P F G	T149N R101W Section 7
		Approximately 0.42 miles NE of 22 nd Street NW & Hwy 85			
27.	Dropmore Elm <i>Ulmus pumila</i> 'Dropmore'	47 44 04.69916 N 103 39 21.87119 W	10"	P F G	T149N R101W Section 7
		Approximately 0.42 miles NE of 22 nd Street NW & Hwy 85			
28.	Dropmore Elm <i>Ulmus pumila</i> 'Dropmore'	47 44 04.68384 N 103 39 21.78263 W	7"	P F G	T149N R101W Section 7
		Approximately 0.42 miles NE of 22 nd Street NW & Hwy 85			

29.	Dropmore Elm <i>Ulmus pumila</i> 'Dropmore'	47 44 04.65943 N 103 39 21.59199 W	7"	P F G	T149N R101W Section 7
		Approximately 0.42 miles NE of 22 nd Street NW & Hwy 85			
30.	Dropmore Elm <i>Ulmus pumila</i> 'Dropmore'	47 44 04.72677 N 103 39 21.41859 W	5.7"	P F G	T149N R101W Section 7 East
		Approximately 0.42 miles NE of 22 nd Street NW & Hwy 85			
31.	Dropmore Elm <i>Ulmus pumila</i> 'Dropmore'	47 44 04.72677 N 103 39 21.41859 W	4.7"	P F G	T149N R101W Section 7 West
		Approximately 0.42 miles NE of 22 nd Street NW & Hwy 85			
32.	Dropmore Elm <i>Ulmus pumila</i> 'Dropmore'	47 44 04.72992 N 103 39 21.30657 W	4.7"	P F G	T149N R101W Section 7
		Approximately 0.42 miles NE of 22 nd Street NW & Hwy 85			
Tree No.	Species	Location	DBH ¹	Condition ²	Notes
33.	Dropmore Elm <i>Ulmus pumila</i> 'Dropmore'	47 44 11.52545 N 103 39 17.32534 W	10.8"	P F G	T149N R101W Section 7
		Approximately 0.43 miles NE of 22 nd Street NW & Hwy 85			
34.	Dropmore Elm <i>Ulmus pumila</i> 'Dropmore'	47 44 11.53794 N 103 39 17.16060 W	7.6"	P F G	T149N R101W Section 7
		Approximately 0.43 miles NE of 22 nd Street NW & Hwy 85			
35.	Dropmore Elm <i>Ulmus pumila</i> 'Dropmore'	47 44 11.53471 N 103 39 16.93193 W	7.6"	P F G	T149N R101W Section 7
		Approximately 0.43 miles NE of 22 nd Street NW & Hwy 85			
36.	Dropmore Elm <i>Ulmus pumila</i> 'Dropmore'	47 44 11.52102 N 103 39 16.77299 W	6.3"	P F G	T149N R101W Section 7
		Approximately 0.43 miles NE of 22 nd Street NW & Hwy 85			
Tree No.	Species	Location	DBH ¹	Condition ²	Notes
37.	Eastern Cottonwood <i>Populus deltoides</i>	47 50 06.07641 N 103 39 36.40118 W	9.5"	P F G	T150N R101W Section 6
		Approximately 0.7 miles W of 29 th St. NW & Hwy 85, and 0.08 miles North			
TOTALS	Ash Count = 10	Cottonwood Count = 5	Elm Count = 22	Total = 37	
TOTAL x 2	Ash Total = 20	Cottonwood Total = 10	Elm Total = 44	Total = 74	

1. Diameter at breast height (DBH) is the diameter of a tree measured in inches at breast height (4.5 feet from the ground).
2. Condition – record the condition of each sampled tree as Good (G); Fair (F); or Poor (P). Good = reasonably straight, clear stem with no serious damage. Poor = badly misshapen, limby, short stemmed or seriously damaged. Poor trees are in a general state of decline but not dead. Fair = trees are in average condition and vigor for the area, but may in need of corrective work.



Shrub Inventory Worksheet

Client: Belle Fourche Pipeline Company	Landowner: Federal	Section: See Notes
Date: 12-11-07	County: McKenzie	Township: See Notes
Data By: Heather Jandt	State: ND	Range: See Notes

Narrative Description of Stand and Landowners Objectives:
 Project: Alexander 8-inch Crude Oil Pipeline
 Starting Point: Bowline Junction = North Unit of the Little Missouri National Grasslands

Shrub No.	Species	Location	Quantity	Approximate Height (ft)	Notes
1.	Western Snowberry <i>Sumphoricarpus occidentalis</i>	47 35 15.57746 N 103 37 22.58389 W	604.42 ft ²	0 ft. to 3 ft.	T147N R102W Section 1
		Approximately 3.3 miles NW of Bowline Junction			Spring Creek
2.	Chokecherry <i>Prunus virginiana</i>	47 35 14.41330 N 103 37 25.06162 W	2	5 ft. to 6 ft.	T147N R102W Section 1
		Approximately 3.3 miles NW of Bowline Junction			Spring Creek
3.	Chokecherry <i>Prunus virginiana</i>	47 35 14.54358 N 103 37 24.82675 W	1	6.5 ft.	T147N R102W Section 1
		Approximately 3.3 miles NW of Bowline Junction			Spring Creek
Shrub No.	Species	Location	Quantity	Approximate Height (ft)	Notes
4.	Silver Buffaloberry <i>Shepherdia argentea</i>	47 35 12.85974 N 103 37 28.12725 W	2	5 ft. to 6 ft.	T147N R102W Section 1
		Approximately 3.3 miles NW of Bowline Junction			Spring Creek
Shrub No.	Species	Location	Quantity	Approximate Height (ft)	Notes
5.	Silver Buffaloberry <i>Shepherdia argentea</i>	47 35 13.93401 N 103 37 30.18624 W	3	0 ft. to 2 ft.	T147N R102W Section 1
		Approximately 3.3 miles NW of Bowline Junction			Spring Creek
6.	Silver Buffaloberry <i>Shepherdia argentea</i>	47 35 13.93401 N 103 37 30.18624 W	3	3 ft. to 4 ft.	T147N R102W Section 1
		Approximately 3.3 miles NW of Bowline Junction			Spring Creek
Shrub No.	Species	Location	Area/ Count	Approximate Height (ft)	Notes
7.	Chokecherry <i>Prunus virginiana</i>	47 36 19.93111 N 103 39 13.83437 W	3	0 ft. to 4 ft.	T148N R102W Section 27
		Approximately 2 miles NW of previous Spring Creek Crossing			Unnamed Tributary
8.	Chokecherry <i>Prunus virginiana</i>	47 36 19.58984 N 103 39 13.82726 W	6	0 ft. to 4 ft.	T148N R102W Section 27
		Approximately 2 miles NW of previous Spring Creek Crossing			Unnamed Tributary

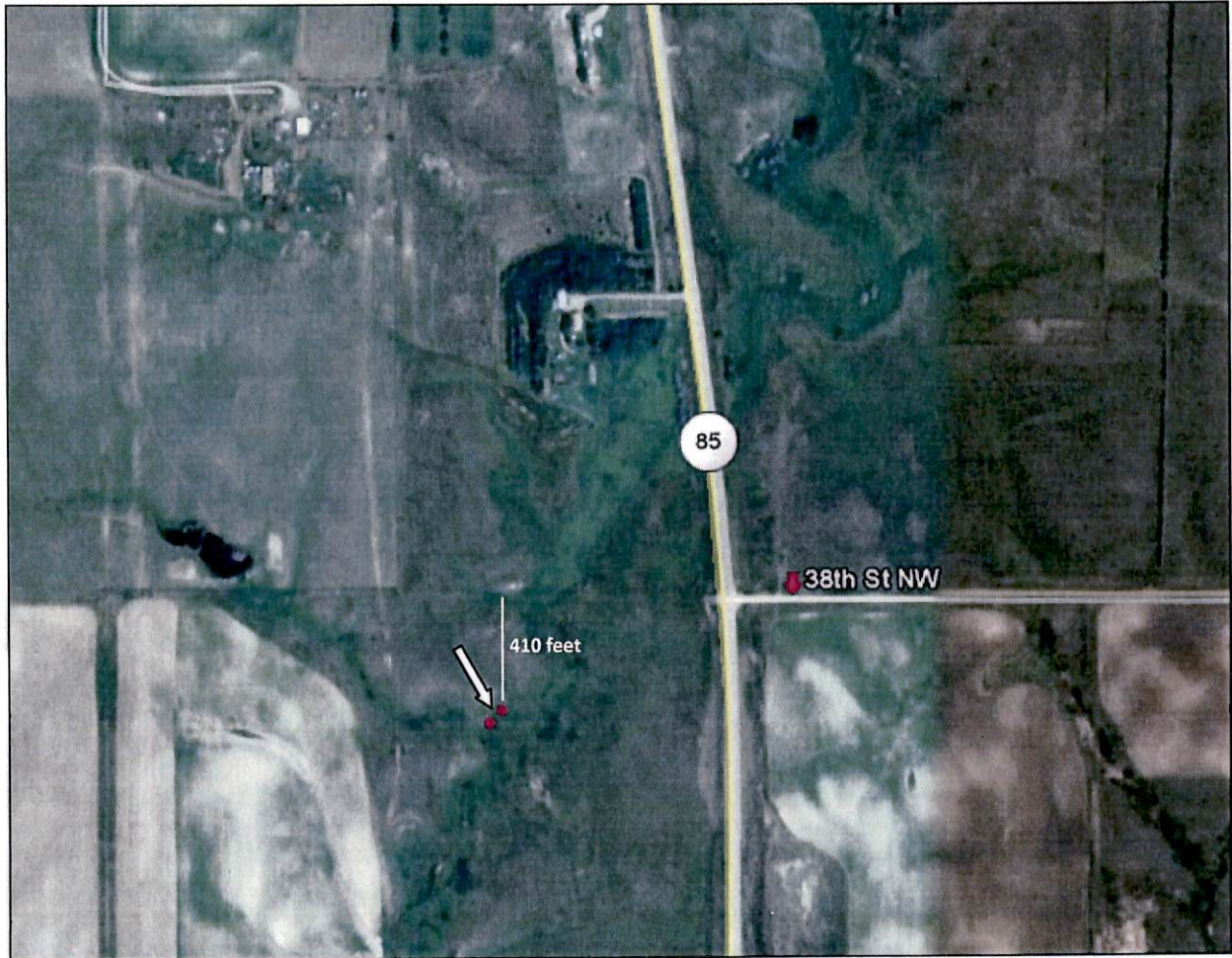
9.	Chokecherry <i>Prunus virginiana</i>	47 36 19.58984 N 103 39 13.82726 W	9	5 ft. to 9 ft.	T148N R102W Section 27
		Approximately 2 miles NW of previous Spring Creek Crossing			Unnamed Tributary
10.	Chokecherry <i>Prunus virginiana</i>	47 36 19.72701 N 103 39 13.80207 W	15	0 ft. to 4 ft	T148N R102W Section 27
		Approximately 2 miles NW of previous Spring Creek Crossing			Unnamed Tributary
11.	Chokecherry <i>Prunus virginiana</i>	47 36 19.72701 N 103 39 13.80207 W	2	5 ft. to 9 ft.	T148N R102W Section 27
		Approximately 2 miles NW of previous Spring Creek Crossing			Unnamed Tributary
12.	Chokecherry <i>Prunus virginiana</i>	47 36 19.72701 N 103 39 13.80207 W	3	10 ft. to 15 ft.	T148N R102W Section 27
		Approximately 2 miles NW of previous Spring Creek Crossing			Unnamed Tributary
13.	Chokecherry <i>Prunus virginiana</i>	47 36 19.86323 N 103 39 13.75348 W	4	0 ft. to 4 ft	T148N R102W Section 27
		Approximately 2 miles NW of previous Spring Creek Crossing			Unnamed Tributary
Shrub No.	Species	Location	Area/ Count	Approximate Height (ft)	Notes
14.	Chokecherry <i>Prunus virginiana</i>	47 36 34.62138 N 103 39 16.61710 W	1	3 ft.	T148N R102W Section 27
		Approximately 0.3 miles N of previous inventory (7-13)			
Shrub No.	Species	Location	Area/ Count	Approximate Height (ft)	Notes
15.	Silver Buffaloberry <i>Shepherdia argentea</i>	47 36 50.15418 N 103 39 25.43464 W	5	0 ft. to 2 ft.	T148N R102W Section 27
		Approximately 0.3 miles NW of previous inventory (14)			
16.	Silver Buffaloberry <i>Shepherdia argentea</i>	47 36 50.06843 N 103 39 25.38430 W	1	5 ft.	T148N R102W Section 27
		Approximately 0.3 miles NW of previous inventory (14)			
17.	Western Snowberry <i>Sumphoricarpos occidentalis</i>	47 36 50.15418 N 103 39 25.43464 W	20	0 ft. to 3 ft.	T148N R102W Section 27
		Approximately 0.3 miles NW of previous inventory (14)			

Shrub No.	Species	Location	Area/ Count	Approximate Height (ft)	Notes
18.	Chokecherry <i>Prunus virginiana</i>	47 36 52.81383 N 103 39 27.13309 W	1	3.5 ft.	T148N R102W Section 27
		Approximately 0.05 miles NW of previous inventory (15-17)			Unnamed Tributary
19.	Western Snowberry <i>Sumphoricarpus occidentalis</i>	47 36 53.01898 N 103 39 27.36271 W	73.95 ft ²	0 ft. to 3 ft.	T148N R102W Section 27
		Approximately 0.05 miles NW of previous inventory (15-17)			Unnamed Tributary
Shrub No.	Species	Location	Area/ Count	Approximate Height (ft)	Notes
20.	Western Snowberry <i>Sumphoricarpus occidentalis</i>	47 37 02.22108 N 103 39 30.70271 W	75	0 ft. to 3 ft.	T148N R102W Section 27
		Approximately 0.18 miles N of previous inventory (18- 19)			Unnamed Tributary
Shrub No.	Species	Location	Area/ Count	Approximate Height (ft)	Notes
21.	Chokecherry <i>Prunus virginiana</i>	47 37 55.10982 N 103 39 26.16819 W	15	0 ft. to 4 ft	T148N R102W Section 22
		Approximately 0.7 miles N of previous inventory (20), 0.30 miles W of access road, 3 miles S of Hwy 68			
Shrub No.	Species	Location	Area/ Count	Approximate Height (ft)	Notes
22.	Chokecherry <i>Prunus virginiana</i>	47 42 57.60095 N 103 39 12.75609 W	8	5 ft. to 9 ft	T149N R101W Section 19
		Approximately 0.32 miles SE of 21 st Street NW			Charbonneau Creek
Shrub No.	Species	Location	Area/ Count	Approximate Height (ft)	Notes
23.	Chokecherry <i>Prunus virginiana</i>	47 55 04.49185 N 103 39 33.14955 W	609.96 ft ²	0 ft. to 15 ft	T151N R101W Section 7
		Approximately 0.52 miles W of 35 th St. NW & Hwy 85, and 0.2 miles S off of 35 th St. NW			Lowland Area
Shrub No.	Species	Location	Area/ Count	Approximate Height (ft)	Notes
24.	Western Snowberry <i>Sumphoricarpus occidentalis</i>	47 57 46.76062 N 103 39 45.50593 W	2,295.32 ft ²	0 ft. to 3 ft.	T152N R101W Section 30
		Approximately 0.18 miles W of 38 th St. NW & Hwy 85			
25.	Western Snowberry <i>Sumphoricarpus occidentalis</i>	47 57 46.29056 N 103 39 46.21200 W	3,592.91 ft ²	0 ft. to 3 ft.	T152N R101W Section 30
		Approximately 0.18 miles W of 38 th St. NW & Hwy 85			
TOTALS	Chokecherry Count = 70 Silver Buffaloberry Count = 14 Western Snowberry Count = 95 Total Count = 179 Chokecherry Total = 140 Silver Buffaloberry Total = 28 Western Snowberry Total = 190 Total Count x 2 = 358				
AREA TOTALS	Chokecherry Area = 609.96 ft ² Western Snowberry Area = 6,566.60 ft ² Total Square Feet = 7,176.56 ft ²				

Tree/Shrub Inventory
Section 30 T152N R101W

Approximately 0.18 miles W of 38th St. NW & Hwy 85

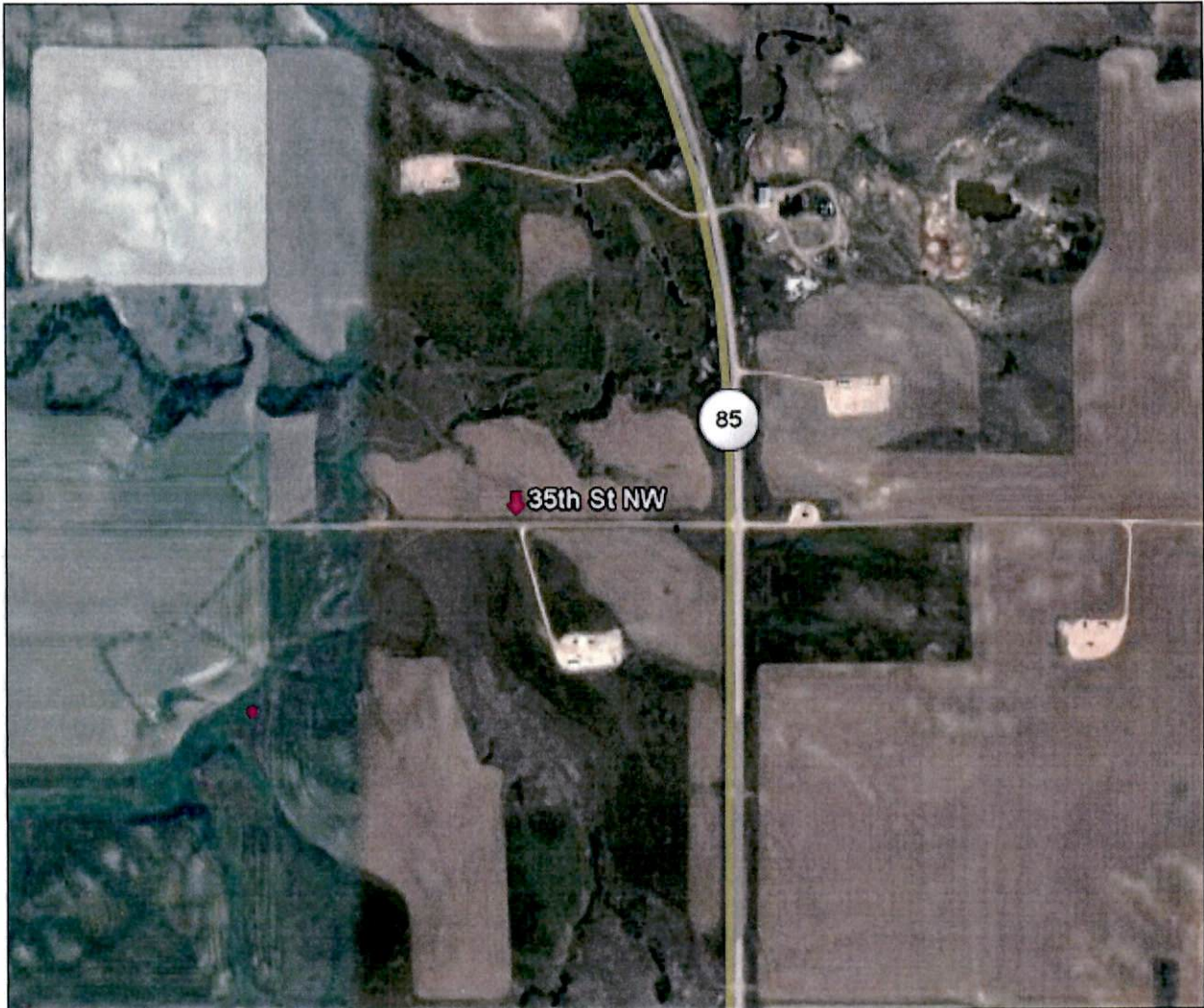
Species	Quantity	Size	Latitude	Longitude
Snowberry	2,295.32 ft ²	0-3 feet	47 57' 46.76062" N	-103 39' 45.505593" W
Snowberry	3,592.91 ft ²	0-3 feet	47 57' 46.29056" N	-103 39' 46.21200" W



Tree/Shrub Inventory
Section 7 T151N R101W

Approximately 0.52 miles W of Hwy 85
Approximately 0.2 miles S off of 35th St. NW

Species	Quantity	Size	Latitude	Longitude
Chokecherry	609.96 ft ²	0-15 feet	47 55' 04.49185" N	-103 39' 33.14955" W



Tree/Shrub Inventory
Section 6 T150N R101W

Approximately 0.7 miles W of Hwy 85
Approximately 0.08 miles N of 29th St NW

Species	Quantity	Size	Latitude	Longitude
Cottonwood	1	9.5" DBH	47 50' 06.07641" N	-103 39' 36.40118" W



Tree/Shrub Inventory

Section 7 T149N R101W

Approximately 0.33 miles W of Hwy 68
Approximately 0.27 miles N of 22nd St NW

Species	Quantity	Size	Latitude	Longitude
Elm	1	6.3" DBH	47 44' 11.52102" N	-103 39' 16.77299" W
Elm	1	7.6" DBH	47 44' 11.53471" N	-103 39' 16.93193" W
Elm	1	7.6" DBH	47 44' 11.53794" N	-103 39' 17.16060" W
Elm	1	10.8" DBH	47 44' 11.52545" N	-103 39' 17.32534" W



Tree/Shrub Inventory Section 7 T149N R101W

Approximately 0.38 miles W of Hwy 68
Approximately 0.15 miles N of 22nd St NW

Species	Quantity	Size	Latitude	Longitude
Elm	1	4.7" DBH	47 44' 04.72992" N	-103 39' 21.30657" W
Elm	1	4.7" DBH	47 44' 04.72677" N	-103 39' 21.41859" W
Elm	1	5.7" DBH	47 44' 04.72677" N	-103 39' 21.41859" W
Elm	1	7" DBH	47 44' 04.65943" N	-103 39' 21.59199" W
Elm	1	7" DBH	47 44' 04.68384" N	-103 39' 21.78263" W
Elm	1	10" DBH	47 44' 04.69916" N	-103 39' 21.87119" W
Elm	1	10.5" DBH	47 44' 04.68136" N	-103 39' 21.98212" W
Elm	1	4.7" DBH	47 44' 04.72413" N	-103 39' 22.06102" W



Tree/Shrub Inventory
Section 18 T149N R101W

Approximately 0.38 miles W of Hwy 68
Approximately 0.03 miles S of 22nd St NW

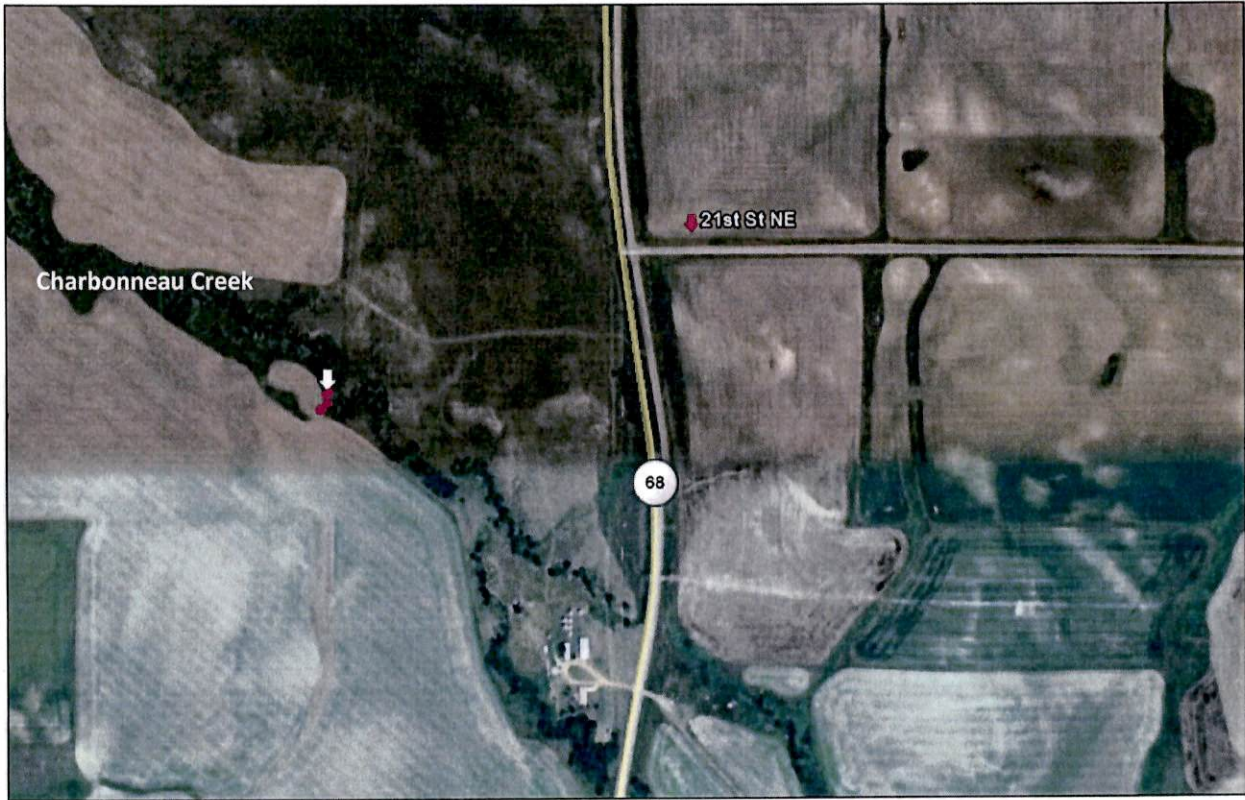
Species	Quantity	Size	Latitude	Longitude
Elm	1	10" DBH	47 43' 55.74099" N	-103 39' 20.52672" W
Elm	1	4.5" DBH	47 43' 55.70912" N	-103 39' 20.68689" W
Elm	1	7" DBH	47 43' 55.73270" N	-103 39' 20.77658" W
Elm	1	4.7" DBH	47 43' 55.70201" N	-103 39' 20.89297" W
Elm	1	7" DBH	47 43' 55.73014" N	-103 39' 20.97747" W
Elm	1	5" DBH	47 43' 55.69945" N	-103 39' 21.12200" W



Tree/Shrub Inventory
Section 19 T149N R101W

Approximately 0.3 miles W of Hwy 68
Approximately 0.33 miles SW of 21st St NW

Species	Quantity	Size	Latitude	Longitude
Green Ash	1	11.5" DBH	47 42' 58.37135" N	-103 39' 12.34415" W
Green Ash	1	9.5" DBH	47 42' 58.47686" N	-103 39' 12.10033" W
Green Ash	1	14.6" DBH	47 42' 57.97260" N	-103 39' 12.22149" W
Green Ash	1	14" DBH	47 42' 57.70208" N	-103 39' 12.64392" W
Chokecherry	8	5-9 feet	47 42' 57.60095" N	-103 39' 12.75609" W



Tree/Shrub Inventory
Section 22 T148N R102W

Approximately 3.35 miles along Access Road from Hwy 68

Species	Quantity	Size	Latitude	Longitude
Chokecherry	15	0-4 feet	47 37' 55.10982" N	-103 39' 26.16819" W



Tree/Shrub Inventory
Section 22 T148N R102W

Approximately 0.70 miles from previous point along Access Road

Species	Quantity	Size	Latitude	Longitude
Elm	1	22.3" DBH	47 37' 17.43703" N	-103 39' 28.99515" W



Tree/Shrub Inventory
Section 27 T148N R102W

Approximately 0.29 miles from previous point along Access Road

Species	Quantity	Size	Latitude	Longitude
Elm	1	4.5" DBH	47 37' 02.32445" N	-103 39' 30.37094" W
Cottonwood	1	16" DBH	47 37' 02.30612" N	-103 39' 30.87705" W
Snowberry	75	0-3 feet	47 37' 02.22102" N	-103 39' 30.70271" W



Tree/Shrub Inventory Section 27 T148N R102W

Approximately 0.20 miles from previous point along Access Road

Species	Quantity	Size	Latitude	Longitude
Elm	1	3.8" DBH	47 36' 52.94983" N	-103 39' 27.29330" W
Snowberry	73.95 ft sq.	0-3 feet	47 36' 53.01898" N	-103 39' 27.36271" W
Chokecherry	1	3.5 feet	47 36' 52.81383" N	-103 39' 27.13309" W



Tree/Shrub Inventory
Section 27 T148N R102W

Approximately 80 feet from previous point along Access Road

Species	Quantity	Size	Latitude	Longitude
Elm	1	5.4" DBH	47 36' 52.16622" N	-103 39' 26.38484" W



Tree/Shrub Inventory Section 27 T148N R102W

Approximately 80 feet from previous point along Access Road

Species	Quantity	Size	Latitude	Longitude
Snowberry	20	0-3 feet	47 36' 50.15418" N	-103 39' 25.43464" W
Silver Buffaloberry	5	0-2 feet	47 36' 50.15418" N	-103 39' 25.43464" W
Silver Buffaloberry	1	5 feet	47 36' 50.06843" N	-103 39' 25.38430" W



Tree/Shrub Inventory
Section 27 T148N R102W

Approximately 0.36 miles from previous point along Access Road

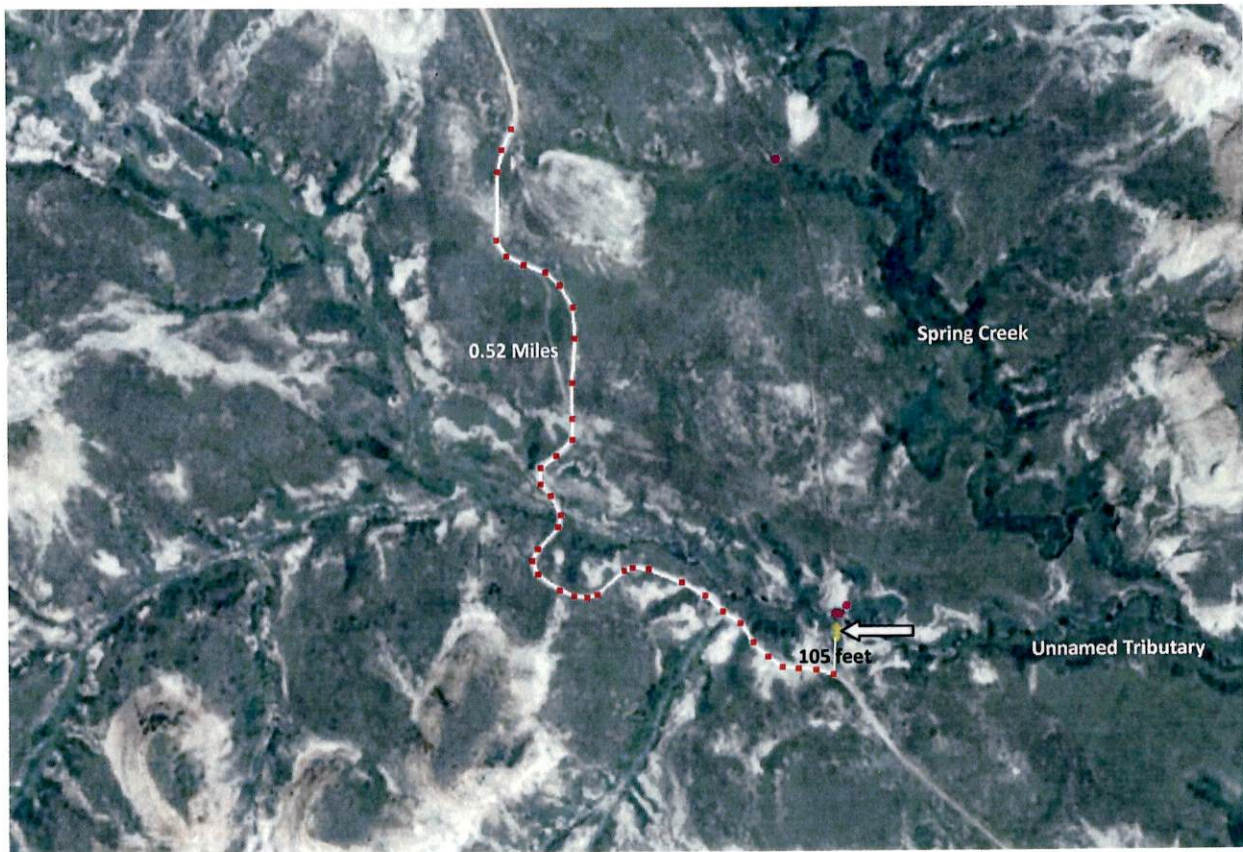
Species	Quantity	Size	Latitude	Longitude
Chokecherry	1	3 feet	47 36' 34.62138" N	-103 39' 16.61710" W



Tree/Shrub Inventory Section 27 T148N R102W

Approximately 0.52 miles from previous point along Access Road
Approximately 105 feet in from Access Road Point

Species	Quantity	Size	Latitude	Longitude
Chokecherry	4	0-4 feet	47 36' 19.86323" N	-103 39' 13.75348" W
Chokecherry	15	0-4 feet	47 36' 19.72701" N	-103 39' 13.80207" W
Chokecherry	2	5-9 feet	47 36' 19.72701" N	-103 39' 13.80207" W
Chokecherry	3	10-15 feet	47 36' 19.72701" N	-103 39' 13.80207" W
Chokecherry	6	0-4 feet	47 36' 19.58984" N	-103 39' 13.82726" W
Chokecherry	9	5-9 feet	47 36' 19.58984" N	-103 39' 13.82726" W
Chokecherry	3	0-4 feet	47 36' 19.93111" N	-103 39' 13.83437" W



Tree/Shrub Inventory
Section 27 T148N R102W

Approximately 0.52 miles from previous point along Access Road
Approximately 38 feet from previous Chokecherry Point

Species	Quantity	Size	Latitude	Longitude
Cottonwood	1	6.4" DBH	47 36' 20.36097" N	-103 39' 13.86032" W
Cottonwood	1	9.5' DBH	47 36' 20.34491" N	-103 39' 13.66745" W
Cottonwood	1	14" DBH	47 36' 20.61038" N	-103 39' 13.34584" W



Tree/Shrub Inventory

Section 1 T147N R102W

Approximately 2.02 miles from previous point along Access Road

Approximately 445 feet Access Road

Species	Quantity	Size	Latitude	Longitude
Silver Buffaloberry	3	0-2 feet	47 35' 13.93401" N	-103 37' 30.18624" W
Silver Buffaloberry	3	3-4 feet	47 35' 13.93401" N	-103 37' 30.18624" W
Silver Buffaloberry	2	5-6 feet	47 35' 12.85974" N	-103 37' 28.12725" W



Tree/Shrub Inventory Section 1 T147N R102W

Approximately 240 feet from previous Buffaloberry Point

Species	Quantity	Size	Latitude	Longitude
Green Ash	1	13" DBH	47 35' 14.08455" N	-103 37' 24.45677" W
Green Ash	1	7" DBH	47 35' 14.33879" N	-103 37' 25.16285" W
Chokecherry	2	5-6 feet	47 35' 14.41330" N	-103 37' 25.06162" W
Chokecherry	1	6.5 feet	47 35' 14.54358" N	-103 37' 24.82675" W
Green Ash	1	39" DBH	47 35' 15.02778" N	-103 37' 24.28658" W
Green Ash	1	5.4" DBH	47 35' 15.57678" N	-103 37' 22.61336" W
Snowberry	604.42 ft sq.	0-3 feet	47 35' 15.57746" N	-103 37' 22.58389" W
Green Ash	1	3.8" DBH	47 35' 15.50729" N	-103 37' 22.30355" W
Green Ash	1	3.2" DBH	47 35' 15.49526" N	-103 37' 22.23631" W

