

# Belle Fourche Pipeline Company

455 North Poplar

P.O. BOX 2360  
CASPER, WY 82602  
307-237-9301  
307-237-3164 FAX

RECEIVED

November 19, 2008

NOV 20 2008

VIA FEDEX

PUBLIC SERVICE COMMISSION

Mr. Patrick Fahn  
Utility Analyst  
North Dakota Public Service Commission  
600 E. Boulevard  
Bismarck, ND 58505-0480

Re: As-Builts for Alexander Loop in McKenzie County, ND  
Case No. PU-07-596

Dear Mr. Fahn:

Pursuant to the Paragraph 22 of the November 9, 2007 Findings of Fact, Conclusions of Law and Order, enclosed please find the following:

- 1) As-Built survey alignment sheets 1 – 6; and,
- 2) CD containing As-Built survey alignment sheets in both pdf and dwg formats.

Should you have any questions concerning this matter, please contact me by mail at the address shown above, by telephone at (307) 266-0351 or by e-mail at [dbell@truecos.com](mailto:dbell@truecos.com).

Sincerely,



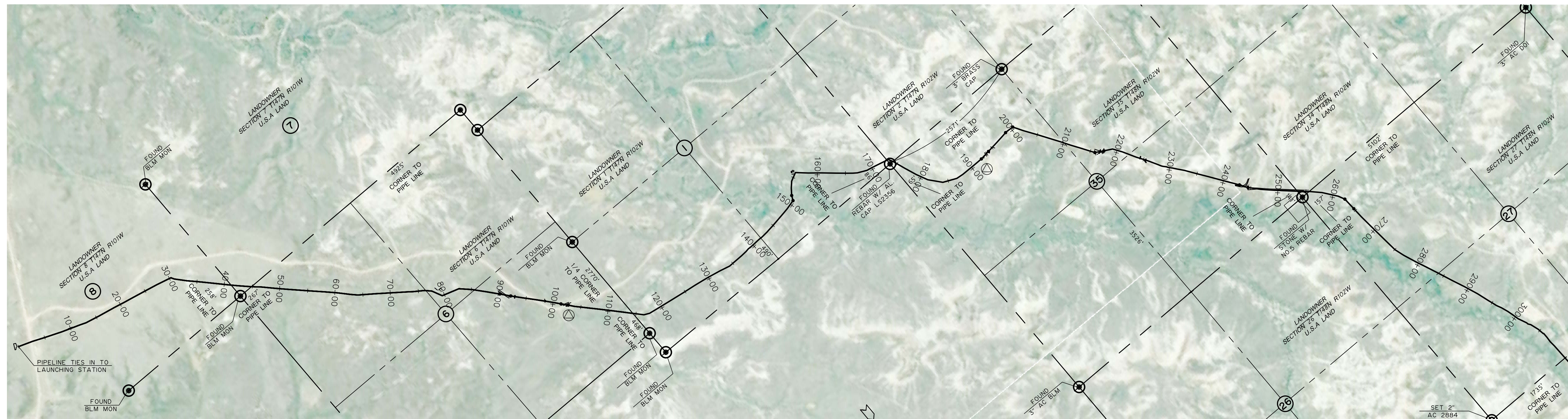
Debra M. Bell  
Land Supervisor  
Belle Fourche Pipeline Company

Enclosures: as stated

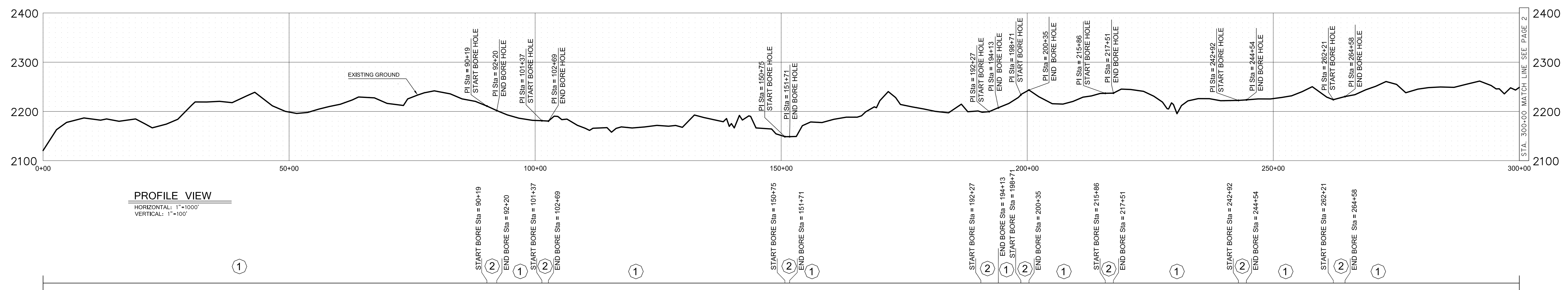
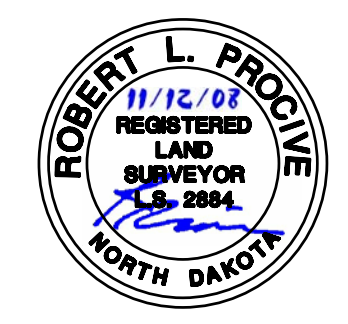
68 PU-07-596 Filed: 11/20/2008 Pages: 22  
As-Built Survey Alignment Sheets 1 - 6 + CD

Belle Fourche Pipeline Company  
LandSupervisor, Debra M. Bell

ROUTING NOTES	SURVEY NOTES	CROSSINGS
PI Sta = 0+00	0+00 - PIPELINE TIES IN TO LAUNCHING STATION	
PI Sta = 12+91		
PI Sta = 30+23 PI Sta = 30+90		
PI Sta = 43+02	44+8 SECTION LINE 7 44+91 SECTION LINE 6	BRB FNC = 44+87
PI Sta = 54+53		
PI Sta = 56+04		
PI Sta = 60+40		
PI Sta = 64+11		
PI Sta = 76+13 PI Sta = 77+46 PI Sta = 78+10 PI Sta = 79+51 PI Sta = 82+76 PI Sta = 85+14		PL BEAR PAW GAS = 77+03 PL BEAR PAW GAS = 78+10 PL BEAR PAW GAS = 81+46 PL BEAR PAW GAS = 83+01
PI Sta = 90+20 PI Sta = 92+20		CL GRVL RD = 91+20 PL BEAR PAW GAS = 92+95
PI Sta = 101+37 PI Sta = 102+69 PI Sta = 103+99 PI Sta = 105+29		USE = 98+40 PL MCKENZIE ELEC = 98+50 CL GRVL RD = 102+51 CL GRVL RD = 103+51 PL BEAR PAW GAS = 102+74
PI Sta = 116+46 PI Sta = 117+51	114+44 SECTION LINE 1	
PI Sta = 119+92		
PI Sta = 134+26		
PI Sta = 142+12 PI Sta = 148+05 PI Sta = 150+75 PI Sta = 151+71 PI Sta = 154+34 PI Sta = 158+98		
PI Sta = 167+15 PI Sta = 168+93	172+98 SECTION LINE 2 174+15 SECTION LINE 35	BRB FNC = 173+43
PI Sta = 178+98 PI Sta = 181+24 PI Sta = 184+01 PI Sta = 185+51 PI Sta = 187+92		
PI Sta = 192+27 PI Sta = 194+13 PI Sta = 198+71 PI Sta = 200+35		CATHODIC TEST = 190+01 CL GRVL RD = 192+51 CL GRVL RD = 193+51 PL BEAR PAW GAS = 194+08 BRB FNC = 195+14
PI Sta = 217+51 PI Sta = 218+96 PI Sta = 219+11		EDGE GRVL RD = 216+05 EDGE GRVL RD = 217+01 EDGE GRVL RD = 217+01
PI Sta = 228+72		PL BEAR PAW GAS = 225+34 PL BEAR PAW GAS = 225+40
PI Sta = 232+64		
PI Sta = 239+42 PI Sta = 242+92 PI Sta = 244+64 PI Sta = 246+91		EDGE GRVL RD = 242+95 EDGE GRVL RD = 243+44 EDGE GRVL RD = 244+42 EDGE GRVL RD = 244+53 EDGE GRVL RD = 246+39
PI Sta = 253+73 PI Sta = 257+92 PI Sta = 260+89 PI Sta = 261+59 PI Sta = 266+59	253+46 SECTION LINE 34 255+57 SECTION LINE 27	253+21 OIL WELL PAD
PI Sta = 275+05 PI Sta = 279+39 PI Sta = 283+98		
PI Sta = 291+93 PI Sta = 298+23		



PLAN VIEW  
HORIZONTAL: 1"=1000'



PROFILE VIEW  
HORIZONTAL: 1"=1000'  
VERTICAL: 1"=100'

LEGEND		
	Power Line	Meter Station
	Telephone Line	P/L Warning Sign
	Telephone Cable (Underground)	Aerial Marker
	Fence	Cathodic Test Station
	Valve	Monument - Recovered
	Check Valve	Monument - Not Recovered
	Relief Valve	

PIPE DATA		
①	8.625	0.188 FBE X-52 ERW
②	8.625	0.250 SUPER CRETE X-52 ERW

ABBREVIATIONS		
BRB FNC	=	BARB WIRE FENCE
UGE	=	UNDERGROUND ELECTRIC
CL	=	CENTERLINE
OHP	=	OVER HEAD POWER
RD	=	ROAD
GRVL	=	GRAVEL
ASPH	=	ASPHALT
PL	=	PIPELINE
TRL	=	TRAIL
PL BF	=	PIPELINE BELLE FOURCHE
PL NB	=	PIPELINE NORTHERN BORDER

Tract No.		Ownership	Sec.	T	R	REVISIONS				
Rev. No.	Description	By	Date	Ckd.						

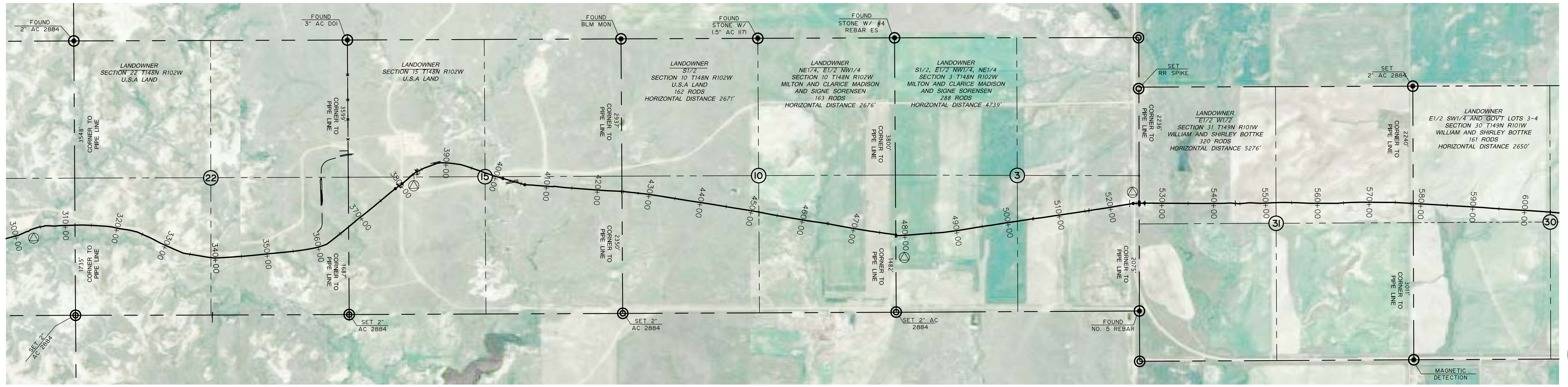
**Belle Fourche Pipeline**  
McKenzie County, North Dakota

ALEXANDER TO BOWLING JUNCTION, ND.  
8" CRUDE OIL PIPELINE  
STA. 00+00 TO STA. 300+00  
MCKENZIE COUNTY, NORTH DAKOTA

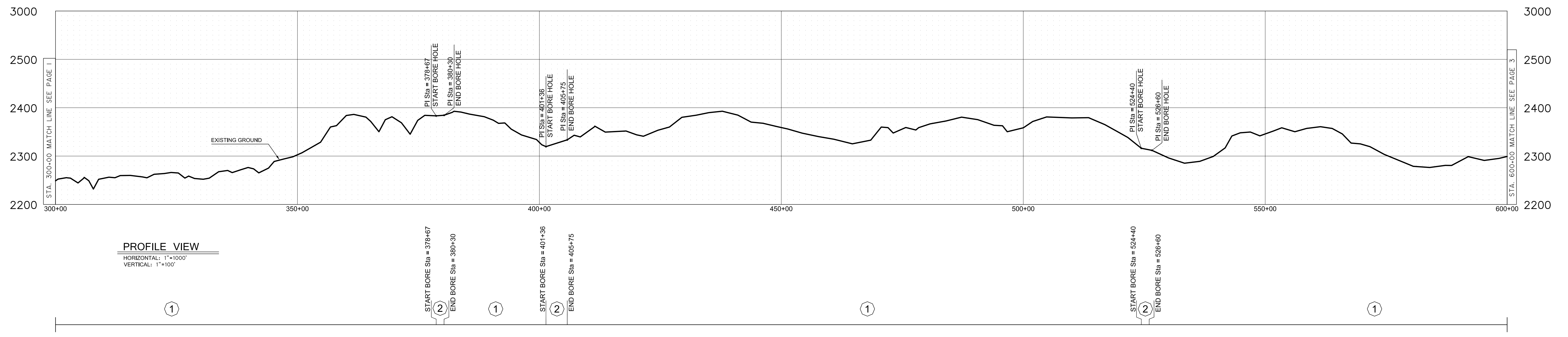
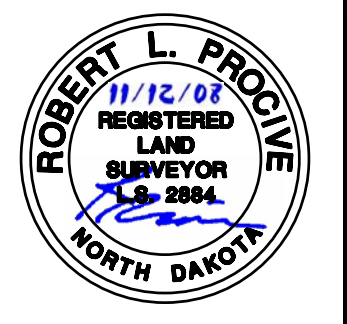
DRAWN BY: E. Schulz	DATE: 8/25/08 RI	APPROVED BY: Aaron Hummer	DATE: 9/19/08 R2
DRAWN BY:	DATE: 8/25/08 RI	APPROVED BY: Robert Precive	DATE: 9/19/08 R2

SCALE	TEST	MAOP	DRAWING NUMBER
1"=1000'	I538	I150	SHEET 1 OF 6

ROUTING NOTES	SURVEY NOTES	CROSSINGS
PI Sta = 300+52 PI Sta = 302+52 PI Sta = 303+07 PI Sta = 303+92	30+8 SECTION LINE 22	CATHODIC TEST # 303+19
PI Sta = 315+37 PI Sta = 317+96		
PI Sta = 323+89		UGE # 324+16
PI Sta = 333+70		
PI Sta = 339+80		
PI Sta = 347+27		
PI Sta = 354+76		
PI Sta = 360+09 PI Sta = 361+45	367+02 SECTION LINE 15	BRB FNC = 367+03
PI Sta = 378+67 PI Sta = 380+30 PI Sta = 383+79 PI Sta = 385+53 PI Sta = 388+61 PI Sta = 392+85		CL GRVL RD = 379+54 CATHODIC TEST # 380+27 UGE # 383+02 CL GRVL RD = 383+91 CL GRVL RD = 384+09 CHAIN LINK FNC = 388+21
PI Sta = 399+38 PI Sta = 401+36		CL GRVL RD = 403+63
PI Sta = 405+75		
PI Sta = 411+34 PI Sta = 411+45		
PI Sta = 424+50	424+69 SECTION LINE 10	BRB FNC = 424+59
PI Sta = 429+44		PL BF = 427+82
PI Sta = 446+21		BRB FNC = 446+39
PI Sta = 454+31		
PI Sta = 464+68		BRB FNC = 464+77
PI Sta = 477+79 PI Sta = 478+59	478+6 SECTION LINE 3	CL GRVL RD = 478+8 CATHODIC TEST # 478+30 BRB FNC = 478+59
PI Sta = 487+25		
PI Sta = 524+40 PI Sta = 526+60	525+57 SECTION LINE 31	OHP FNC = 523+72 BRB FNC = 524+48 CL ASPH RD = 525+58 CL ASPH RD = 526+59 UGE # 526+59
PI Sta = 543+11 PI Sta = 544+84 PI Sta = 546+93 PI Sta = 548+90		BRB FNC = 544+11
PI Sta = 553+42		
PI Sta = 558+85		
PI Sta = 563+85		
PI Sta = 567+75		
PI Sta = 574+60	576+45 SECTION LINE 30	CL DIST. TRAIL = 578+43 OHP = 578+72



PLAN VIEW  
HORIZONTAL: 1"=1000'



PROFILE VIEW  
HORIZONTAL: 1"=1000'  
VERTICAL: 1"=100'

LEGEND		
	Power Line	Meter Station
	Telephone Line	P/L Warning Sign
	Telephone Cable (Underground)	Aerial Marker
	Fence	Cathodic Test Station
	Valve	Monument - Recovered
	Check Valve	Monument - Not Recovered
	Relief Valve	

PIPE DATA		
①	8.625	0.188 FBE X-52 ERW
②	8.625	0.25 SUPER CRETE X -52 ERW

ABBREVIATIONS		
BRB FNC	=	BARB WIRE FENCE
UGE	=	UNDERGROUND ELECTRIC
CL	=	CENTERLINE
OHP	=	OVER HEAD POWER
RD	=	ROAD
GRVL	=	GRAVEL
ASPH	=	ASPHALT
PL	=	PIPELINE
TRL	=	TRAIL
PL BF	=	PIPELINE BELLE FOURCHE
PL NB	=	PIPELINE NORTHERN BORDER

Tract No.	Ownership	Sec.	T	R	Rev. No.	Description	By	Date	Ckd.

**Belle Fourche Pipeline**  
McKenzie County, North Dakota

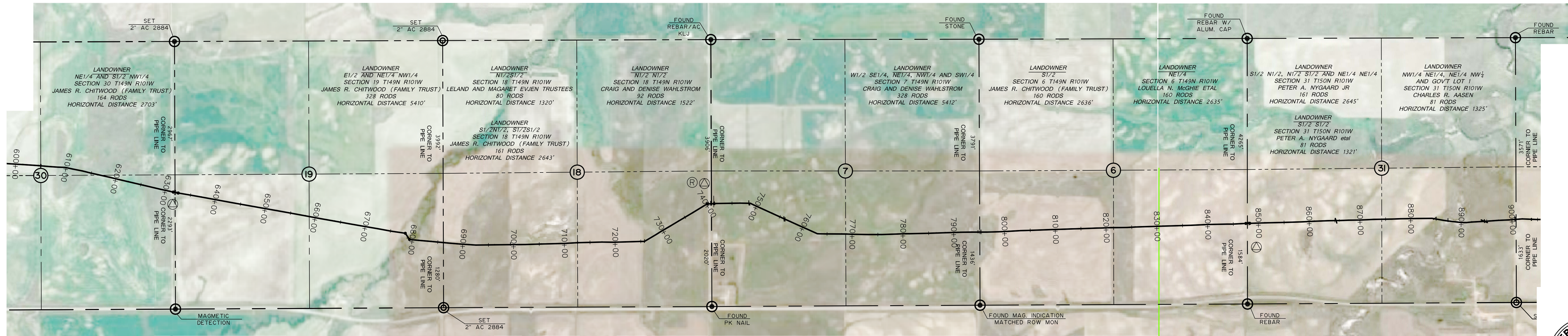
**Belle Fourche Pipeline**  
ALEXANDER TO BOWLINE JUNCTION, ND.  
8" CRUDE OIL PIPELINE  
STA. 300+00 TO STA. 600+00  
MCKENZIE COUNTY, NORTH DAKOTA

DRAWN BY: E. Schulz	DATE: 8/25/08 RI	APPROVED BY: Aaron Hummer	DATE: 9/19/08 R2
DRAWN BY:	DATE: 8/25/08 RI	APPROVED BY: Robert Provine	DATE: 9/19/08 R2

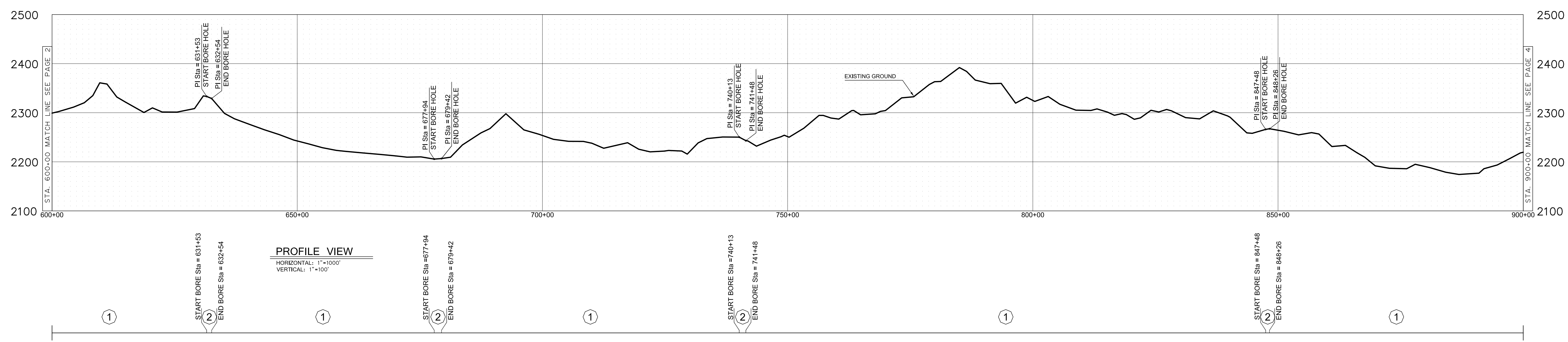
SCALE: 1"=1000'    TEST: I538    MAOP: 1150    DRAWING NUMBER: SHEET 2 OF 6

ROUTING NOTES	SURVEY NOTES	CROSSINGS
PI Sta = 609+73		BRB FNC = 604+88
PI Sta = 631+53 PI Sta = 632+54	631+92 SECTION LINE 19	BRB FNC = 631+53 CL DIRT TRL = 631+53 BRB FNC = 632+25
PI Sta = 677+94 PI Sta = 679+42	686+34 SECTION LINE 18	BRB FNC = 679+11
		BRB FNC = 699+33
		BRB FNC = 712+56
PI Sta = 725+73		BRB FNC = 725+74
PI Sta = 740+13 PI Sta = 741+48	740+96 SECTION LINE 7	RECTIFIER AND PLATINUM CATHODIC PROTECTION STATION BRB FNC = 740+35 CL DIRT TRL = 740+39 OHP = 741+41 BRB FNC = 741+51
PI Sta = 748+63		
PI Sta = 763+07		
PI Sta = 775+88		
PI Sta = 785+25		
		BRB FNC = 794+72 CL DIRT TRL = 795+28
PI Sta = 825+68	795+07 SECTION LINE 6	
		BRB FNC = 848+08 CL DIRT TRL = 848+49 BRB FNC = 847+85
		PL CENEX = 865+23
PI Sta = 875+23		
PI Sta = 884+19		BRB FNC = 884+60
PI Sta = 889+97		BRB FNC = 887+32
		PL SCAR = 894+52

**STATIONING CHART**  
N.T.S.



**PLAN VIEW**  
HORIZONTAL: 1"=1000'



**PROFILE VIEW**  
HORIZONTAL: 1"=1000'  
VERTICAL: 1"=100'

**LEGEND**

○ Tract Number	—P— Power Line	Ⓜ Meter Station
Ⓜ Interstate Highway	Ⓜ Telephone Line	Ⓜ P/L Warning Sign
Ⓜ Federal Highway	Ⓜ Telephone Cable (Underground)	Ⓜ Aerial Marker
Ⓜ State Highway	Ⓜ Fence	Ⓜ Cathodic Test Station
Ⓜ Mile Post	Ⓜ Valve	Ⓜ Monument - Recovered
Ⓜ Equation	Ⓜ Check Valve	Ⓜ Monument - Not Recovered
Ⓜ Foreign Pipe Line	Ⓜ Relief Valve	Ⓜ RECTIFIER

**PIPE DATA**

①	8.625	0.188	FBE	X-52	ERW
②	8.625	0.25	SUPER CRETE	X-52	ERW

**ABBREVIATIONS**

BRB FNC = BARB WIRE FENCE  
 UGE = UNDERGROUND ELECTRIC  
 CL = CENTERLINE  
 OHP = OVER HEAD POWER  
 RD = ROAD  
 GRVL = GRAVEL  
 ASPH = ASPHALT  
 PL = PIPELINE  
 TRL = TRAIL  
 PL BF = PIPELINE BELLE FOURCHE  
 PL NB = PIPELINE NORTHERN BORDER

Tract No.	Ownership	Sec.	T	R	Rev. No.	Description	By	Date	Ckd.

**Belle Fourche Pipeline**  
McKenzie County, North Dakota

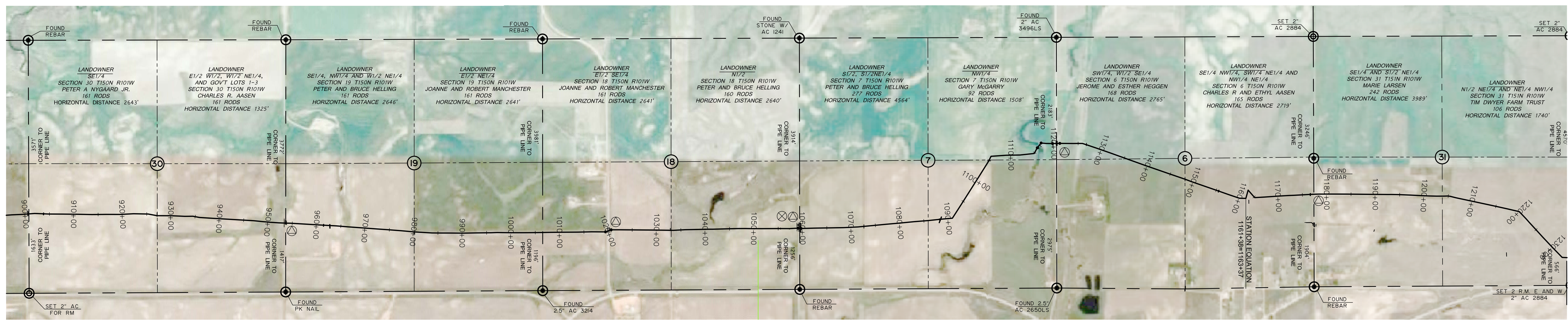
**Belle Fourche Pipeline**  
ALEXANDER TO BOWLINE JUNCTION, ND.  
8" CRUDE OIL PIPELINE  
STA. 600+00 TO STA. 900+00  
MCKENZIE COUNTY, NORTH DAKOTA

**INTERSTATE ENGINEERING**  
Interstate Engineering, Inc.  
425 5th Street  
Bismarck, ND 58501  
701-785-1234  
www.interstateeng.com

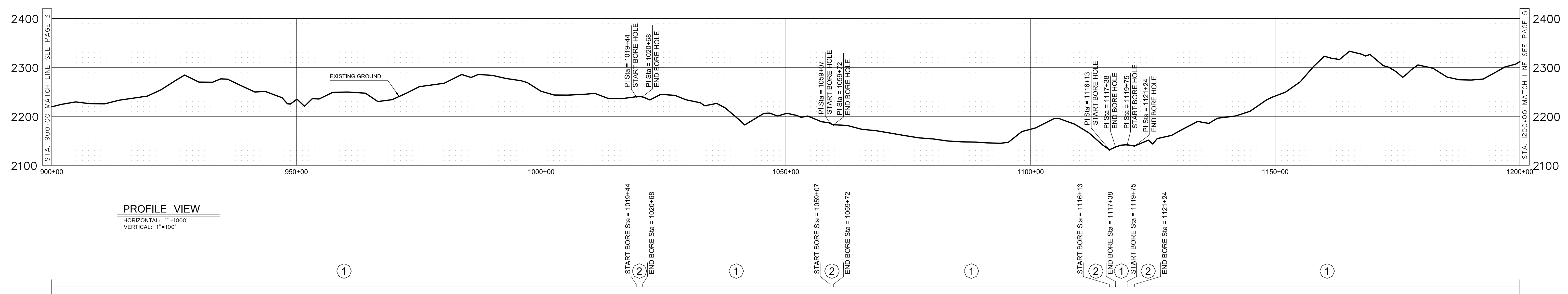
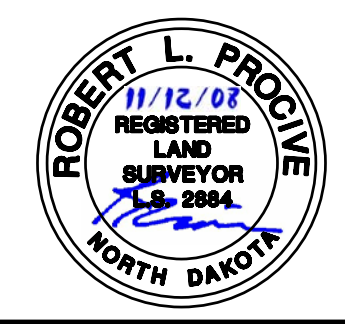
DRAWN BY: E. Schulz DATE: 8/25/08 RI APPROVED BY: Aaron Hummer DATE: 9/19/08 R2  
 DRAWN BY: DATE: 8/25/08 RI APPROVED BY: Robert Progive DATE: 9/19/08 R2

SCALE: 1"=1000' TEST: I538 MAOP: 1150 DRAWING NUMBER: SHEET 3 OF 6

ROUTING NOTES	SURVEY NOTES	CROSSINGS
PI Sta = 901+87	900+77 SECTION LINE 30	BRB FNC = 900+45 CL CRT FRL = 900+65 PL BEAR PAW = 903+79
PI Sta = 95+77	PI Sta = 95+29 PI Sta = 92+15	BRB FNC = 927+15
PI Sta = 954+55 PI Sta = 955+90	953+65 SECTION LINE 19	BRB FNC = 953+34 BRB FNC = 953+56 CL CRT FRL = 953+71 CATHODIC TEST = 953+77 BRB FNC = 953+82
PI Sta = 964+10	PI Sta = 964+10	PL MEREX = 962+74
PI Sta = 983+77	PI Sta = 983+77	BRB FNC = 980+21
PI Sta = 1019+44 PI Sta = 1020+68	1006+53 SECTION LINE 18	N.T.S. CL CRT FRL = 1020+07 OHP = 1020+64
PI Sta = 1033+41	PI Sta = 1033+41	BRB FNC = 1032+86
PI Sta = 1046+74	PI Sta = 1046+74	
PI Sta = 1059+07 PI Sta = 1059+72	1059+43 SECTION LINE 7	PLAQUE (050+49) CATHODIC TEST = 1059+08 OHP = 1059+35 OHP = 1059+61
PI Sta = 1074+58	PI Sta = 1074+58	BRB FNC = 1072+63
PI Sta = 1090+89	PI Sta = 1090+89	PL NB = 1088+46
PI Sta = 105+91 PI Sta = 114+81 PI Sta = 116+13 PI Sta = 117+38 PI Sta = 119+75 PI Sta = 121+24	1120+57 SECTION LINE 6	BRB FNC = 104+88 VE = 119+75 CL CRT FRL = 120+59 CATHODIC TEST = 121+26
PI Sta = 1125+90	PI Sta = 1125+90	BRB FNC = 1126+74
PI Sta = 1149+54	PI Sta = 1149+54	BRB FNC = 1149+21
PI Sta = 1160+05 PI Sta = 1161+36	STATION EQUATION 1161+38=1163+37	PL RTC = 1155+54
PI Sta = 1177+75 PI Sta = 1192+50	1177+37 SECTION LINE 51	PL LAND TECH = 1151+48 CATHODIC TEST = 1177+53



PLAN VIEW  
HORIZONTAL: 1"=1000'



PROFILE VIEW  
HORIZONTAL: 1"=1000'  
VERTICAL: 1"=100'

LEGEND	
	Tract Number
	Interstate Highway
	Federal Highway
	State Highway
	Mile Post
	Equation
	Foreign Pipe Line
	Power Line
	Telephone Line
	Telephone Cable (Underground)
	Fence
	Valve
	Check Valve
	Relief Valve
	Meter Station
	P/L Warning Sign
	Aerial Marker
	Cathodic Test Station
	Monument - Recovered
	Monument - Not Recovered
	Main Line Valve Site

PIPE DATA	
①	8.625 0.188 FBE X-52 ERW
②	8.625 0.25 SUPER CRETE X-52 ERW

ABBREVIATIONS	
BRB FNC	= BARB WIRE FENCE
UGE	= UNDERGROUND ELECTRIC
CL	= CENTERLINE
OHP	= OVER HEAD POWER
RD	= ROAD
GRVL	= GRAVEL
ASHH	= ASPHALT
PL	= PIPELINE
TRL	= TRAIL
PL BF	= PIPELINE BELLE FOURCHE
PL NB	= PIPELINE NORTHERN BORDER

Tract No.	Ownership	Sec.	T	R	Rev. No.	Description	By	Date	Ckd.

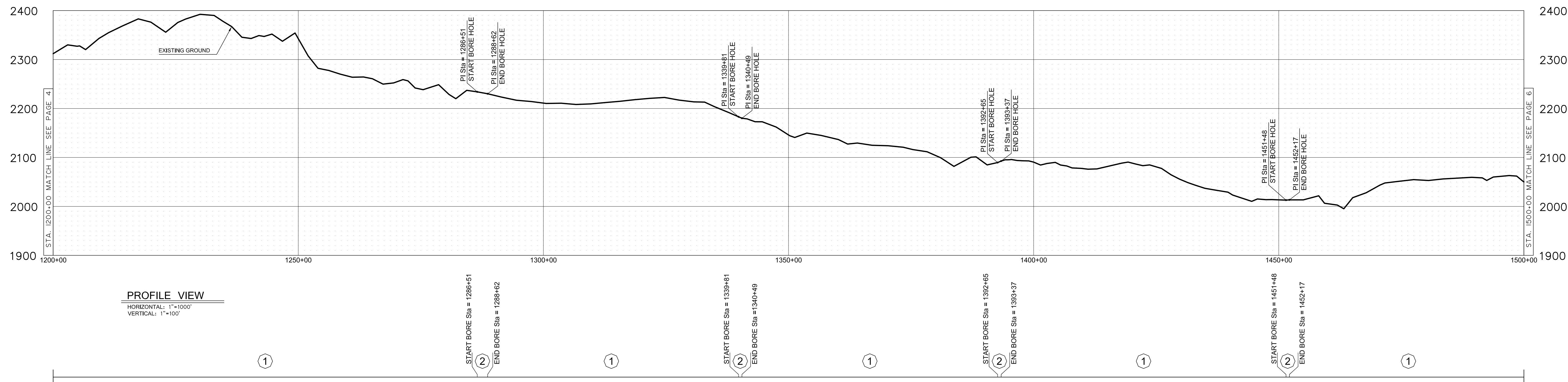
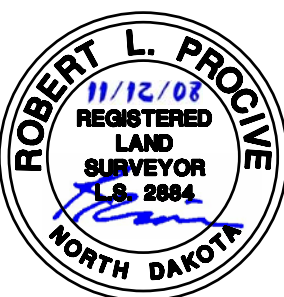
**Belle Fourche Pipeline**  
McKenzie County, North Dakota

<b>Belle Fourche Pipeline</b>		Alexander to Bowline Junction, ND. 8" CRUDE OIL PIPELINE STA. 900+00 TO STA. 1200+00 MCKENZIE COUNTY, NORTH DAKOTA	
DRAWN BY: E. Schulz	DATE: 8/25/08 RI	APPROVED BY: Aaron Hummer	DATE: 9/19/08 R2
DRAWN BY: E. Schulz	DATE: 8/25/08 RI	APPROVED BY: Robert Prociak	DATE: 9/19/08 R2
SCALE: 1"=1000'	TEST: I538	MAOP: 1150	DRAWING NUMBER: SHEET 4 OF 6

ROUTING NOTES	SURVEY NOTES	CROSSINGS
PI Sta = 1204+89	123+65 SECTION LINE 30	BRB FNC = 1261+04
PI Sta = 1221+93		
PI Sta = 1232+83		
PI Sta = 1244+63		
PI Sta = 1258+62		
PI Sta = 1275+47	1287+40 SECTION LINE 19	CATHODIC TEST = 1286+51 CL GRVL RD = 1286+59 BRB FNC = 1288+62
PI Sta = 1286+51		
PI Sta = 1288+62		
PI Sta = 1339+81	1340+2 SECTION LINE 18	BRB FNC = 1349+86
PI Sta = 1339+86		
PI Sta = 1340+49		
PI Sta = 1351+00		
PI Sta = 1360+60		
PI Sta = 1371+00		
PI Sta = 1381+00		
PI Sta = 1392+45	1393+01 SECTION LINE 7	BRB FNC = 1392+46 BRB FNC = 1397+22
PI Sta = 1392+65		
PI Sta = 1393+02		
PI Sta = 1393+02		CATHODIC TEST = 1451+46 CL GRVL RD = 1451+77
PI Sta = 1407+84		LAND TECH = 1451+46 BRB FNC = 1456+86
PI Sta = 1423+66		
PI Sta = 1439+18	1451+78 SECTION LINE 6	BRB FNC = 1465+54
PI Sta = 1451+48		
PI Sta = 1452+17		BEAR PAW = 1465+62
PI Sta = 1458+15		
PI Sta = 1461+94		
PI Sta = 1465+09		



PLAN VIEW  
HORIZONTAL: 1"=1000'



PROFILE VIEW  
HORIZONTAL: 1"=1000'  
VERTICAL: 1"=100'

**LEGEND**

○ Tract Number	—P— Power Line	—M— Meter Station
⊖ Interstate Highway	—P— Telephone Line	⊖ P/L Warning Sign
⊖ Federal Highway	—P— Telephone Cable (Underground)	⊖ Aerial Marker
⊖ State Highway	—x— Fence	⊖ Cathodic Test Station
⊖ Mile Post	⊖ Valve	⊖ Monument - Recovered
⊖ Equation	⊖ Check Valve	⊖ Monument - Not Recovered
⊖ Foreign Pipe Line	⊖ Relief Valve	

**PIPE DATA**

Tract No.	Ownership	Sec.	T	R
①	8.625	0.188	FBE	X-52 ERW
②	8.625	0.25	SUPER CRETE	X-52 ERW

**ABBREVIATIONS**

BRB FNC = BARB WIRE FENCE  
 UGE = UNDERGROUND ELECTRIC  
 CL = CENTERLINE  
 OHP = OVER HEAD POWER  
 RD = ROAD  
 GRVL = GRAVEL  
 ASPH = ASPHALT  
 PL = PIPELINE  
 TRL = TRAIL  
 PL NB = PIPELINE NORTHERN BORDER

**REVISIONS**

Rev. No.	Description	By	Date	Ckd.

**Belle Fourche Pipeline**  
McKenzie County, North Dakota

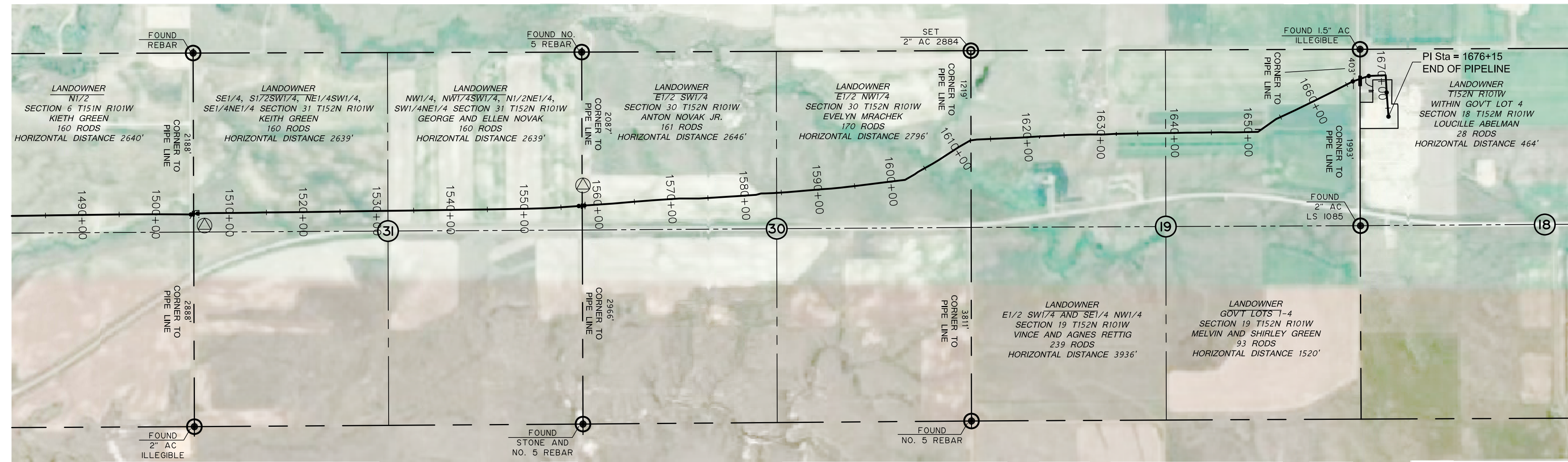
**Belle Fourche Pipeline**  
ALEXANDER TO BOWLINE JUNCTION, ND,  
8" CRUDE OIL PIPELINE  
STA. 1200+00 TO STA. 1500+00  
MCKENZIE COUNTY, NORTH DAKOTA

INTERSTATE ENGINEERING  
425 5th Street  
Bismarck, ND 58501  
Ph: (701) 725-1111  
Fax: (701) 725-1111  
www.interstateeng.com

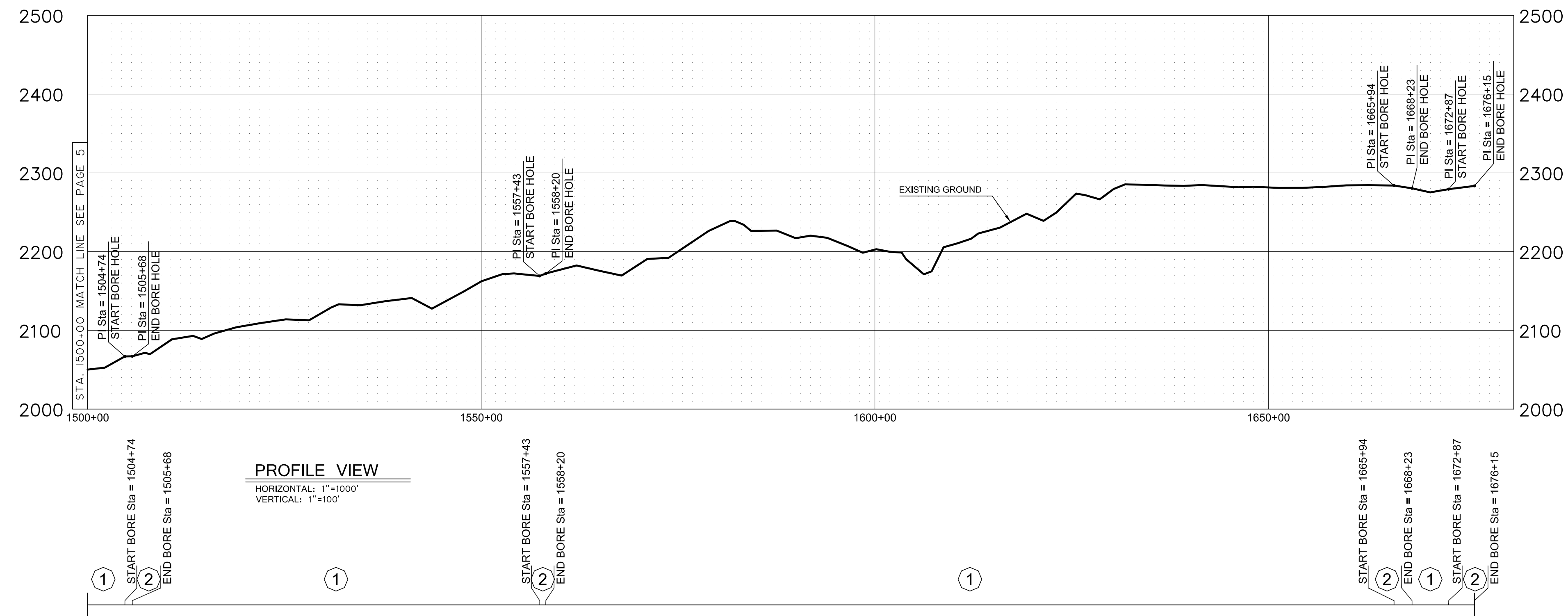
DRAWN BY: E. Schulz DATE: 8/25/08 RI APPROVED BY: Aaron Hummer DATE: 9/19/08 R2  
 DRAWN BY: DATE: 8/25/08 RI APPROVED BY: Robert Provine DATE: 9/19/08 R2

SCALE: 1"=1000' TEST: I538 MAOP: 1150 DRAWING NUMBER: SHEET 5 OF 6

ROUTING NOTES	SURVEY NOTES	CROSSINGS
PI Sta = 1504+74 PI Sta = 1505+68	1505+42 SECTION LINE 31	
PI Sta = 1550+04 PI Sta = 1552+69 PI Sta = 1557+43 PI Sta = 1559+20 PI Sta = 1562+11	1557+69 SECTION LINE 30	OHP = 1554+99 CL GRVL RD = 1505+08 CATHODIC TEST = 1559+81 OHP = 1505+85
PI Sta = 1571+09 PI Sta = 1573+80		CL GRVL RD = 157+85 CATHODIC TEST = 1559+37 OHP = 1559+27
PI Sta = 1592+24		BRB FNC = 1594+35
PI Sta = 1593+93		
PI Sta = 1601+88		
PI Sta = 162+23	162+34 SECTION LINE 19	BRB FNC = 162+27
PI Sta = 1624+74		BRB FNC = 162+71
		BRB FNC = 163+09
PI Sta = 1654+33 PI Sta = 1654+34		BRB FNC = 165+93
PI Sta = 1665+94 PI Sta = 1668+23 PI Sta = 1672+87 PI Sta = 1676+15	1666+99 SECTION LINE 18	UGE 1666+03 CL ASPH RD = 1666+99 BRB FNC = 167+15



PLAN VIEW  
HORIZONTAL: 1"=1000'



PROFILE VIEW  
HORIZONTAL: 1"=1000'  
VERTICAL: 1"=100'

LEGEND		
	Power Line	Meter Station
	Telephone Line	P/L Warning Sign
	Telephone Cable (Underground)	Aerial Marker
	Fence	Cathodic Test Station
	Valve	Monument - Recovered
	Check Valve	Monument - Not Recovered
	Relief Valve	

PIPE DATA		
①	8.625	0.188 FBE X-52 ERW
②	8.625	0.25 SUPER CRETE X -52 ERW

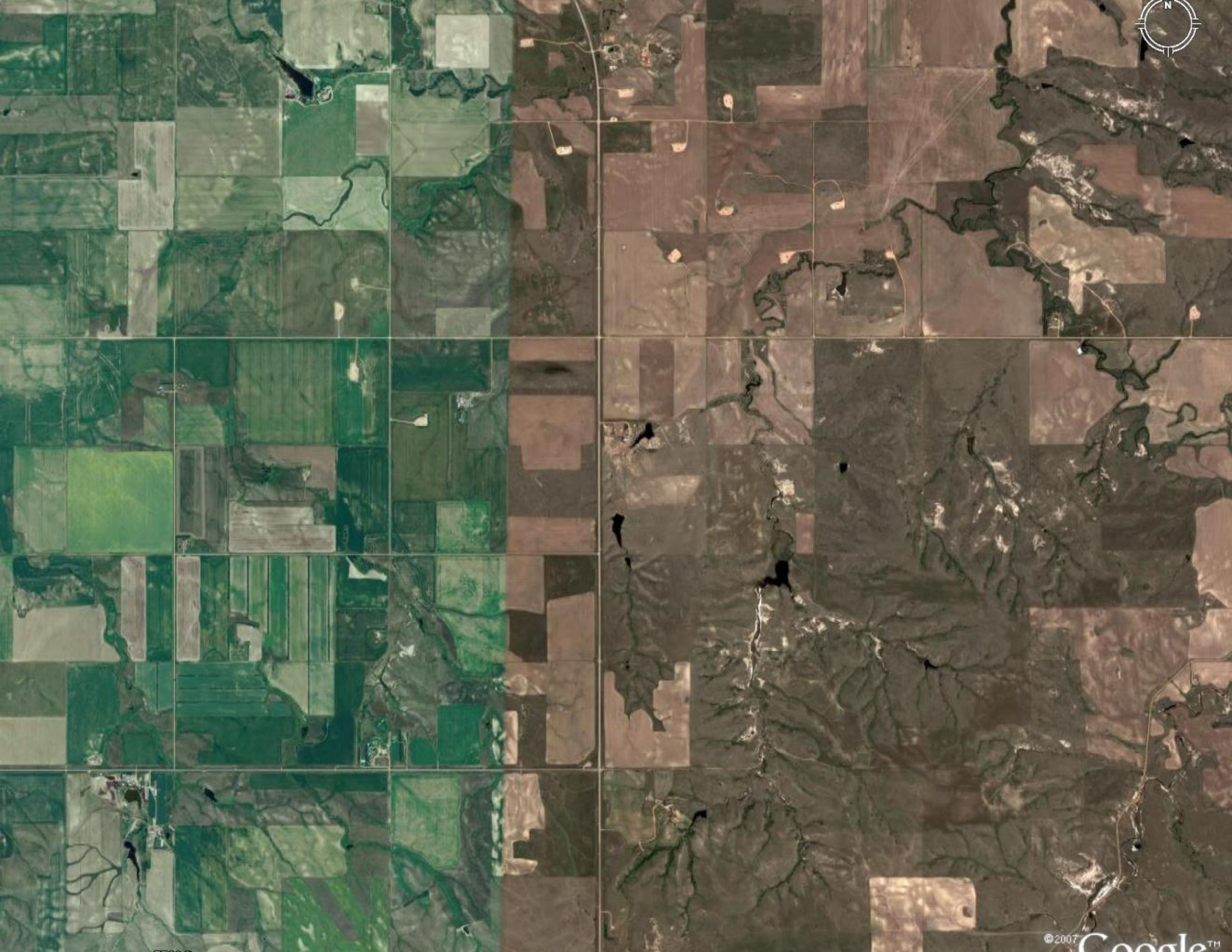
ABBREVIATIONS		
BRB FNC	=	BARB WIRE FENCE
UGE	=	UNDERGROUND ELECTRIC
CL	=	CENTERLINE
OHP	=	OVER HEAD POWER
RD	=	ROAD
GRVL	=	GRAVEL
ASPH	=	ASPHALT
PL	=	PIPELINE
TRL	=	TRAIL
PL NB	=	PIPELINE NORTHERN BORDER

Tract No.	Ownership	Sec.	T	R	Rev. No.	Description	By	Date	Ckd.

**Belle Fourche Pipeline**  
McKenzie County, North Dakota

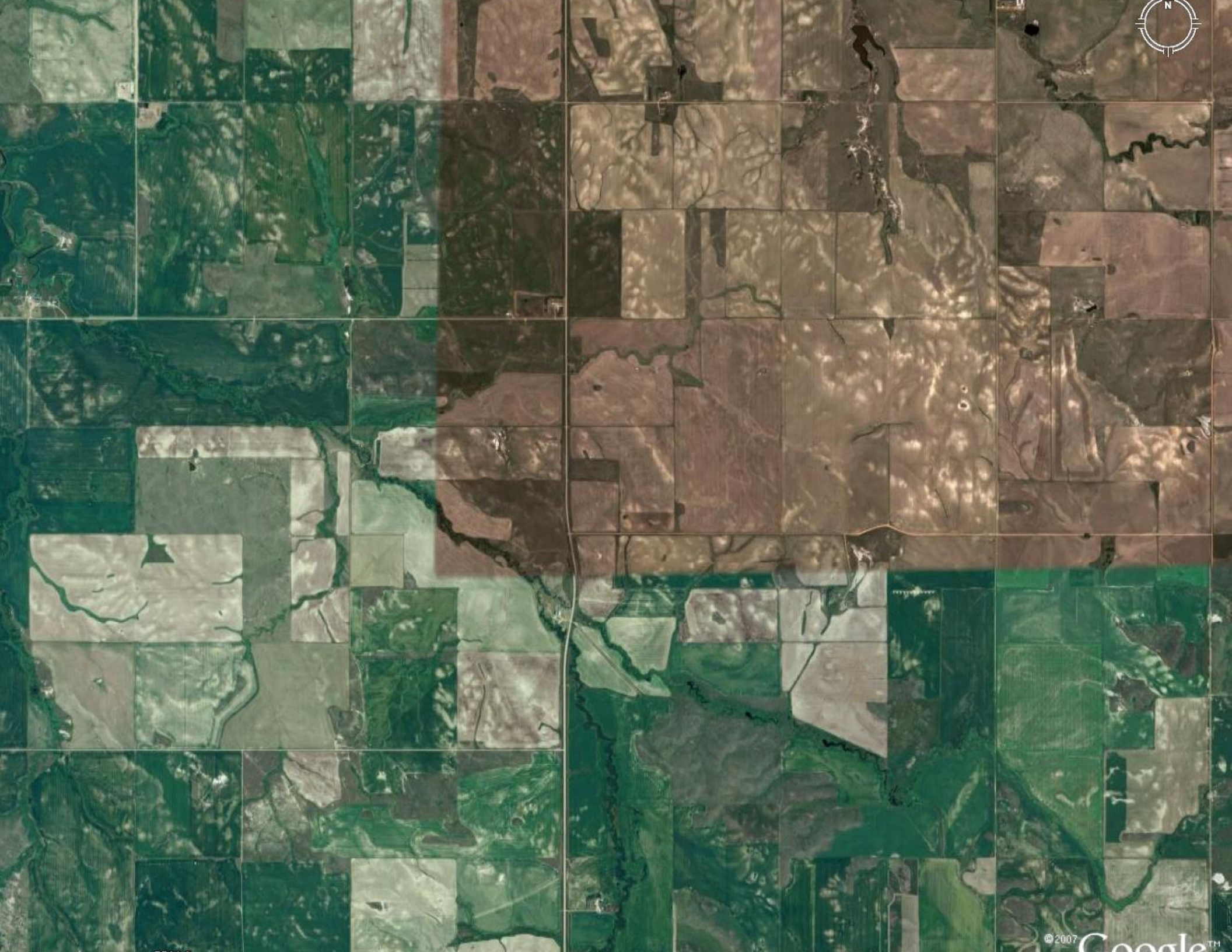
<b>Belle Fourche Pipeline</b> ALEXANDER TO BOWLINE JUNCTION, ND. 8" CRUDE OIL PIPELINE STA. 1500+00 TO STA. 1676+15 MCKENZIE COUNTY, NORTH DAKOTA		 <small>Interstate Engineering Inc. 720 So. 9th 425 East Main Street Bismarck, ND 58101 Ph: (701) 238-1111 Fax: (701) 238-1111 www.interstateeng.com</small>	
DRAWN BY: E. Schulz	DATE: 8/25/08 RI	APPROVED BY: Aaron Hummer	DATE: 9/19/08 R2
DRAWN BY:	DATE: 8/25/08 RI	APPROVED BY: Robert Procter	DATE: 9/19/08 R2
SCALE: 1"=1000'	TEST: I538	MAOP: 1150	DRAWING NUMBER: SHEET 6 OF 6

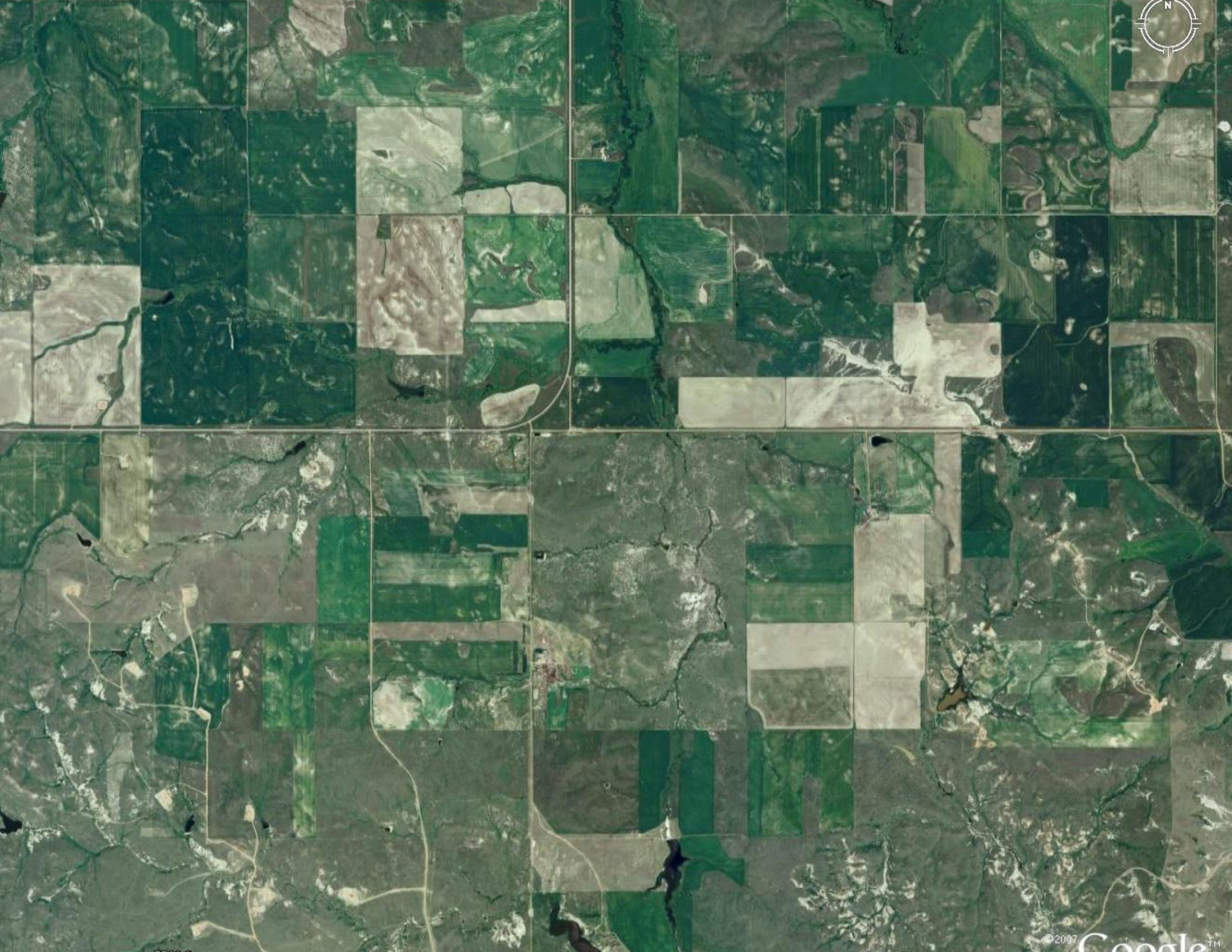


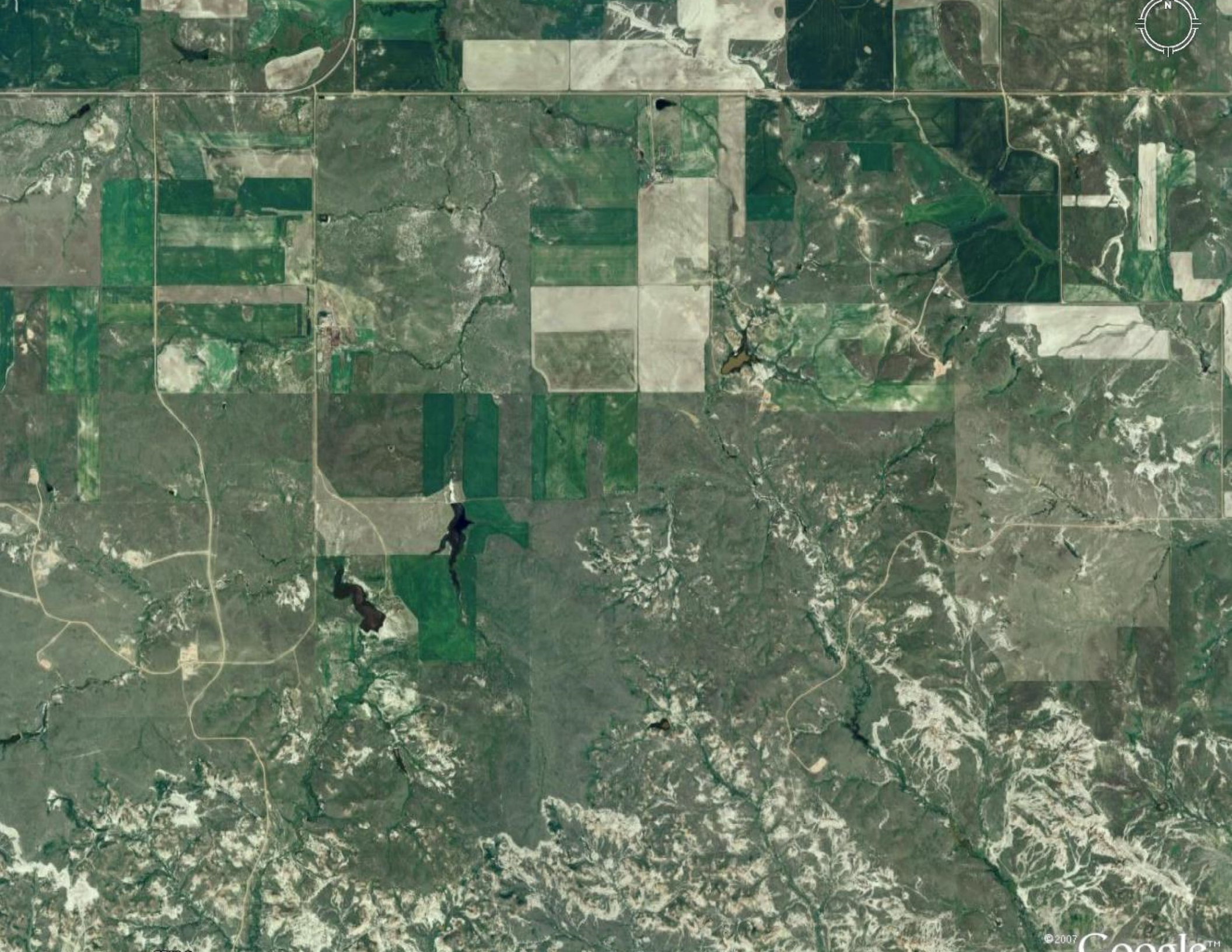


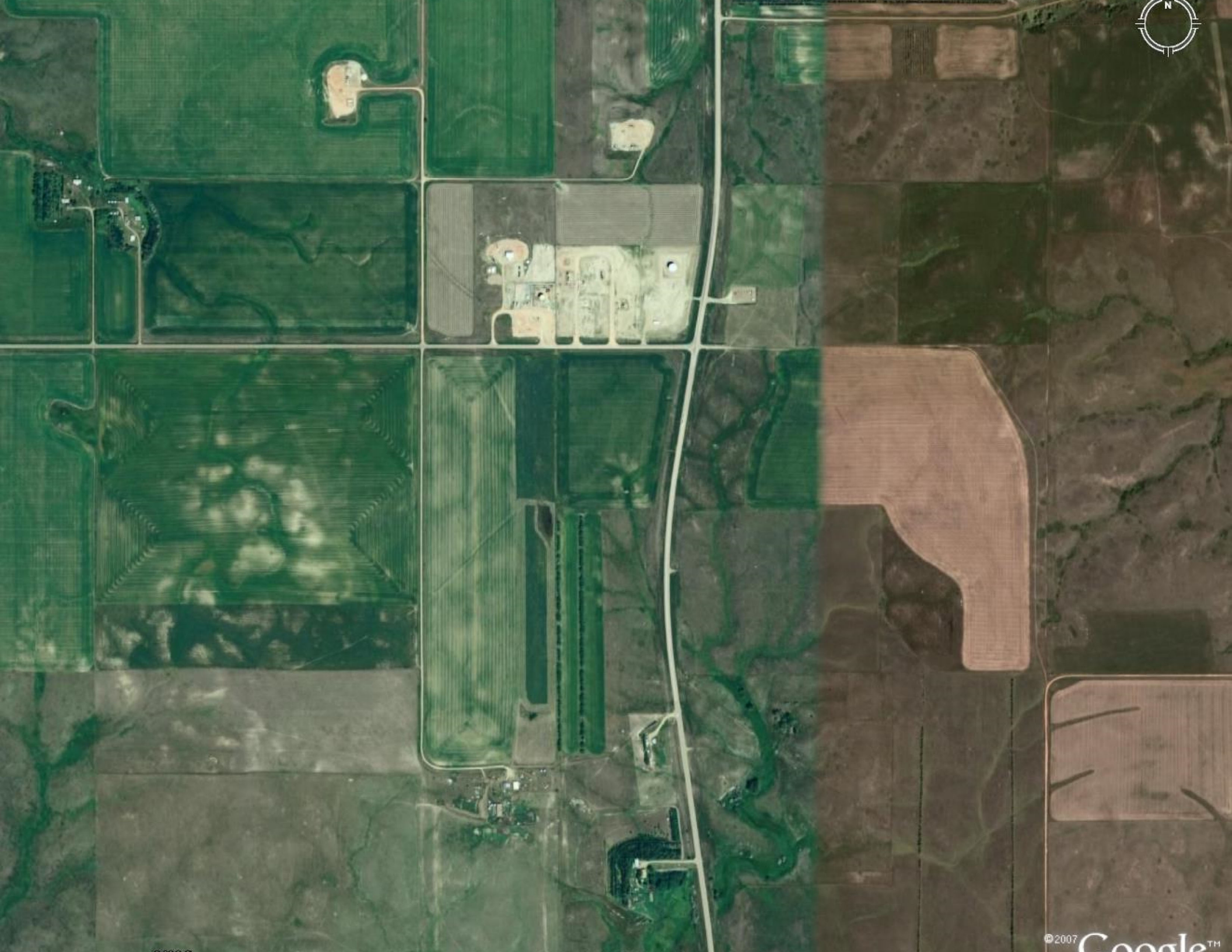


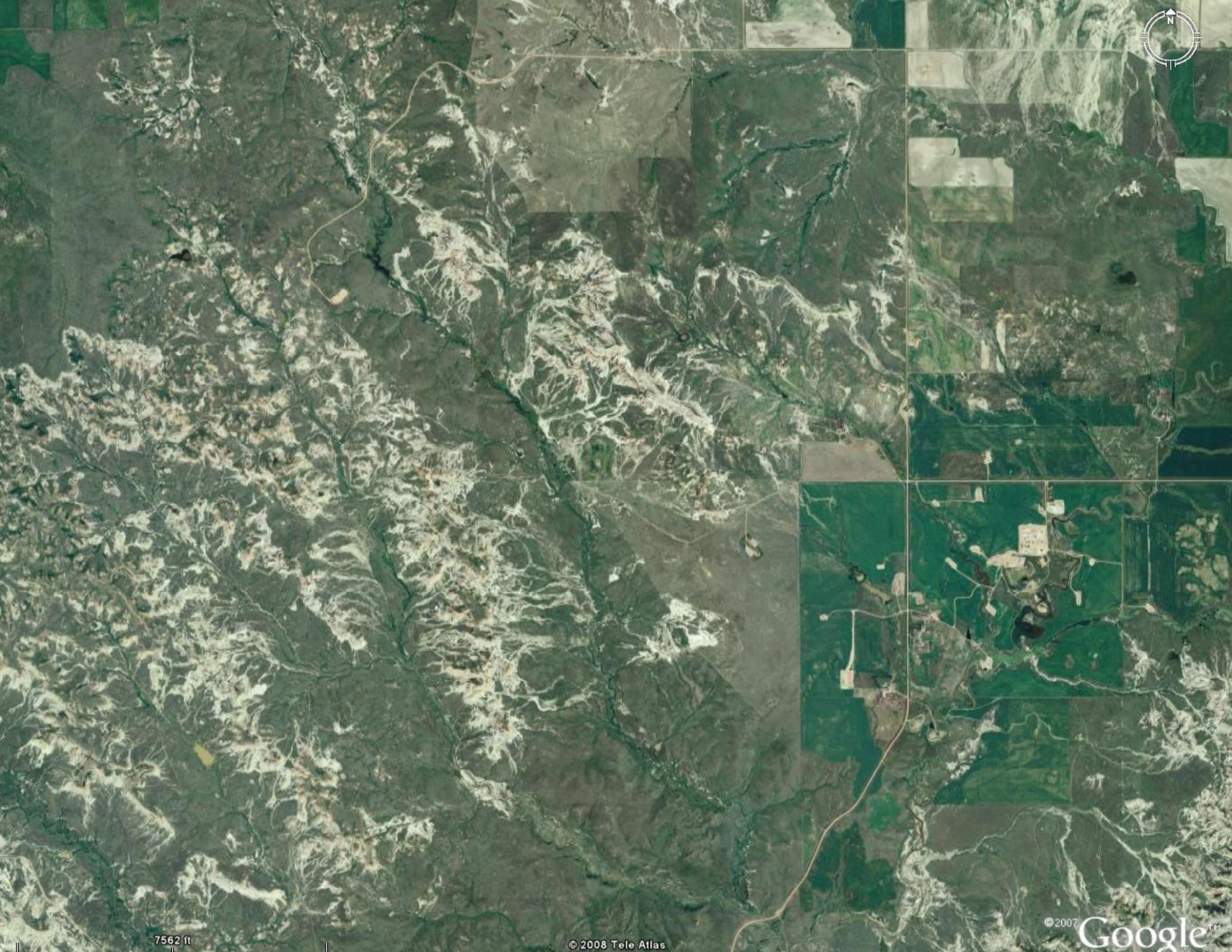
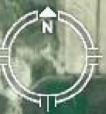












7562 ft

© 2008 Tele Atlas

© 2007

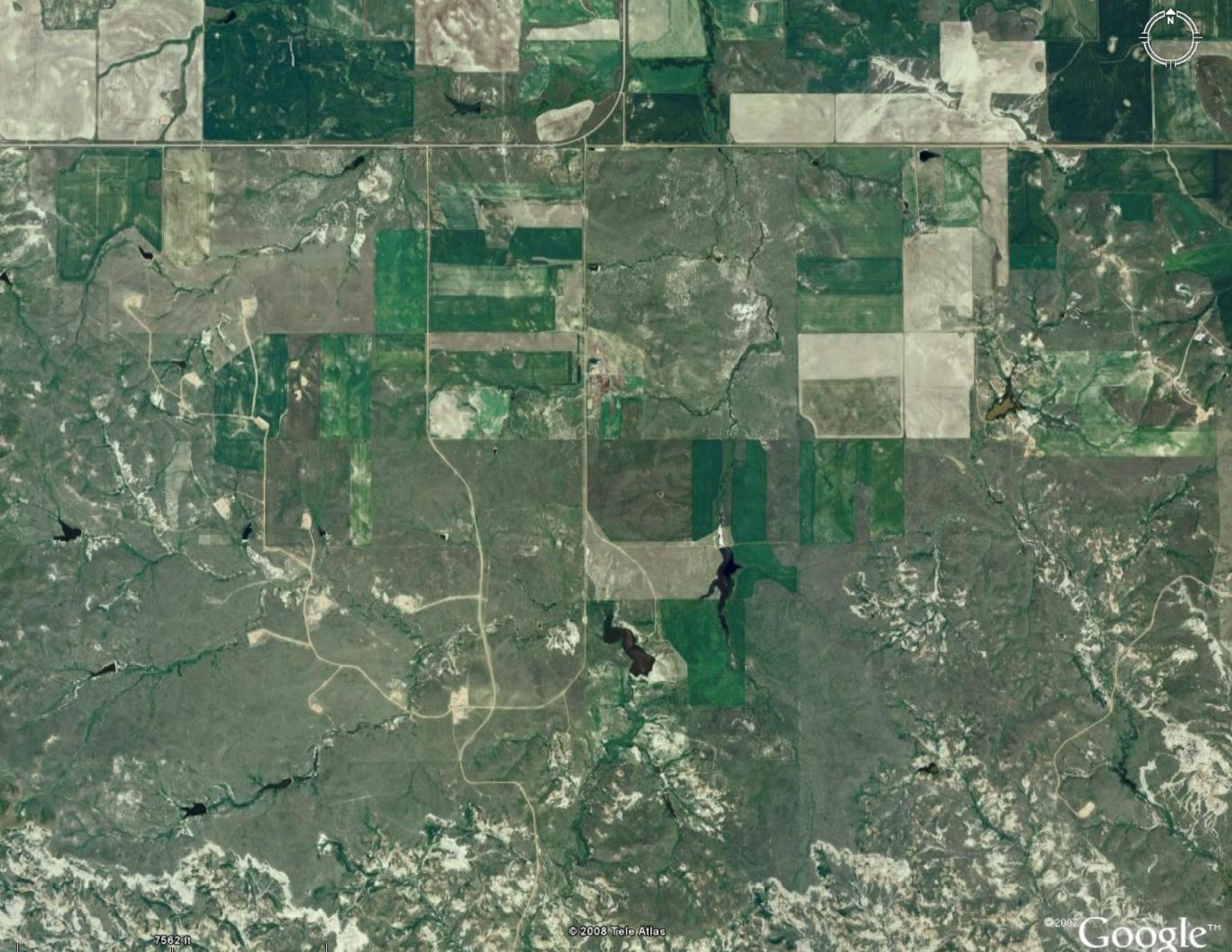
Google™



7562 ft

Image © 2008 DigitalGlobe  
© 2008 Tele Atlas

© 2007 Google™



7562 ft

© 2008 Teo Atlas

© 2008 Google™



7562 ft

© 2008 Tele Atlas

© 2007 Google™

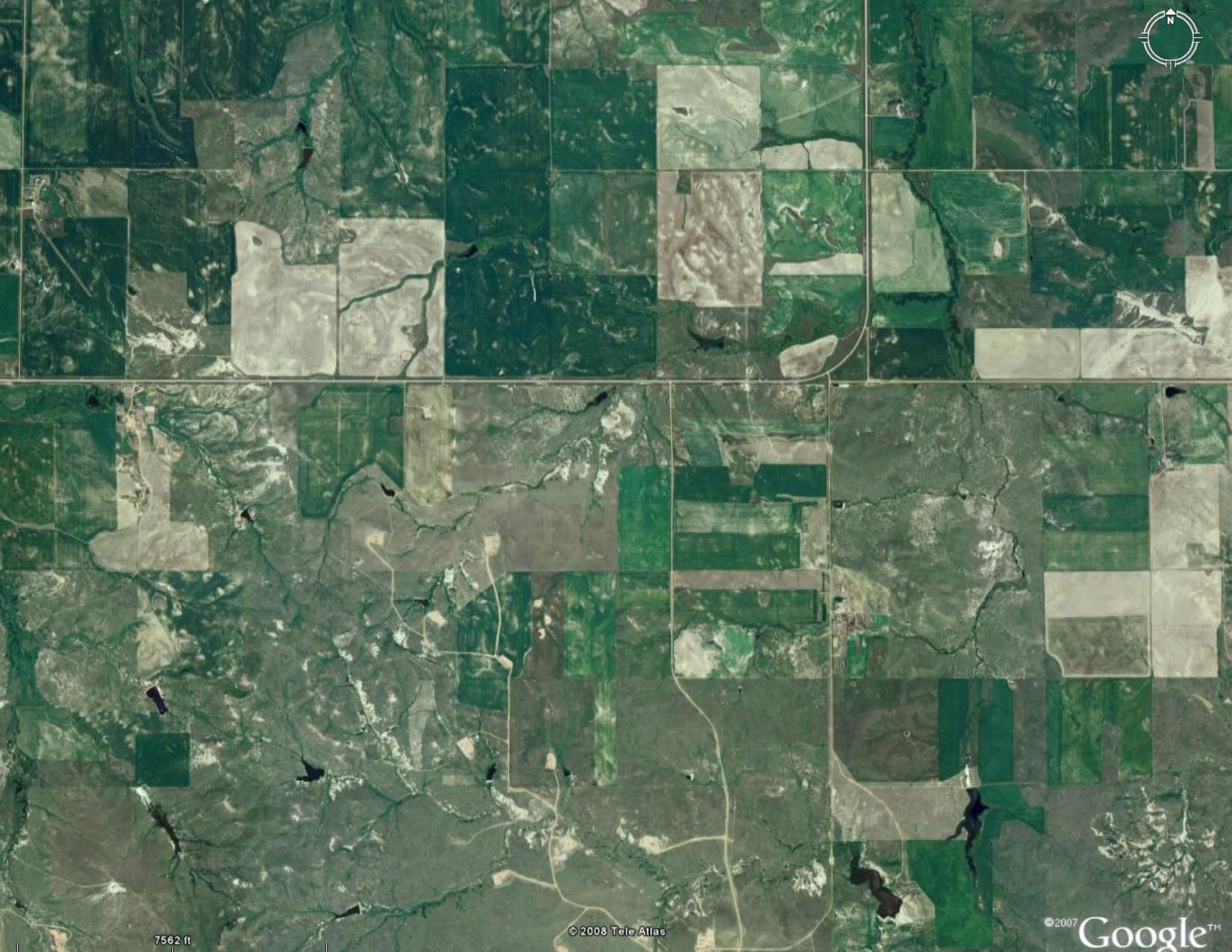


7562 ft

© 2008 Tele Atlas

© 2007

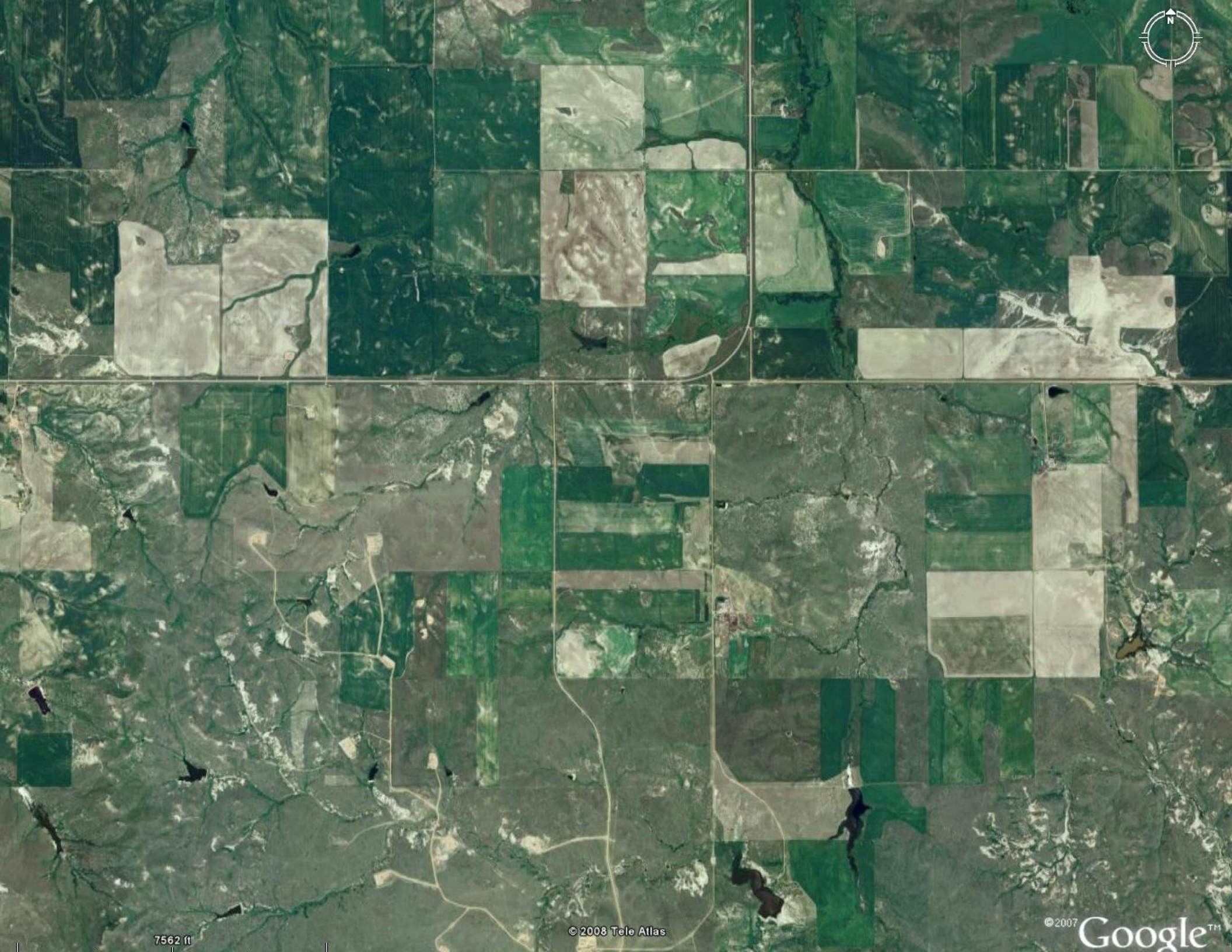
Google™



7562 ft

© 2008 Tele Atlas

© 2007 Google™



7562 ft

© 2008 Tele Atlas

© 2007 Google™