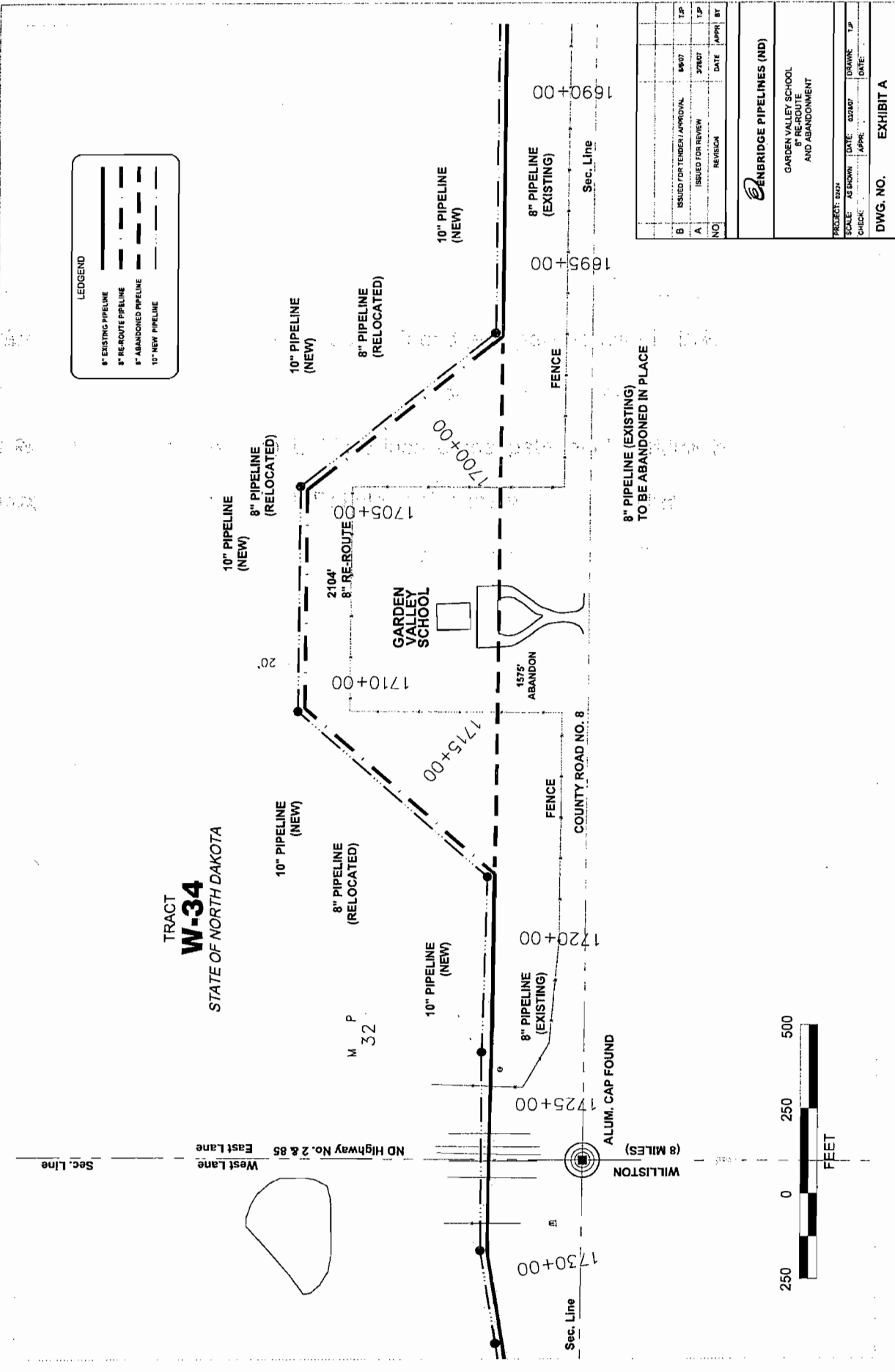


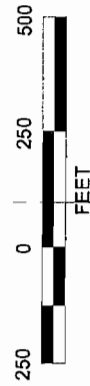
LEDGEND

	8" EXISTING PIPELINE
	8" RE-ROUTE PIPELINE
	8" ABANDONED PIPELINE
	10" NEW PIPELINE

TRACT  
**W-34**  
STATE OF NORTH DAKOTA



8" PIPELINE (EXISTING)  
TO BE ABANDONED IN PLACE



NO.	REVISION	DATE	APPR.	BY
B	ISSUED FOR TENDER / APPROVAL			T.P.
A	ISSUED FOR REVIEW			T.P.

<b>ENBRIDGE PIPELINES (ND)</b>	
GARDEN VALLEY SCHOOL 8" RE-ROUTE AND ABANDONMENT	
PROJECT DATA	
SCALE: AS SHOWN	DATE: 02/07
CHECK: [ ]	APPR: [ ]
DRAWN: [ ]	T.P. DATE: [ ]
DWG. NO. <b>EXHIBIT A</b>	