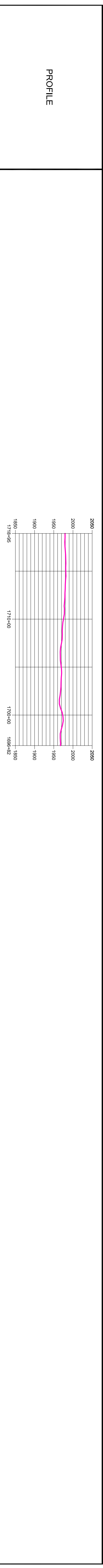
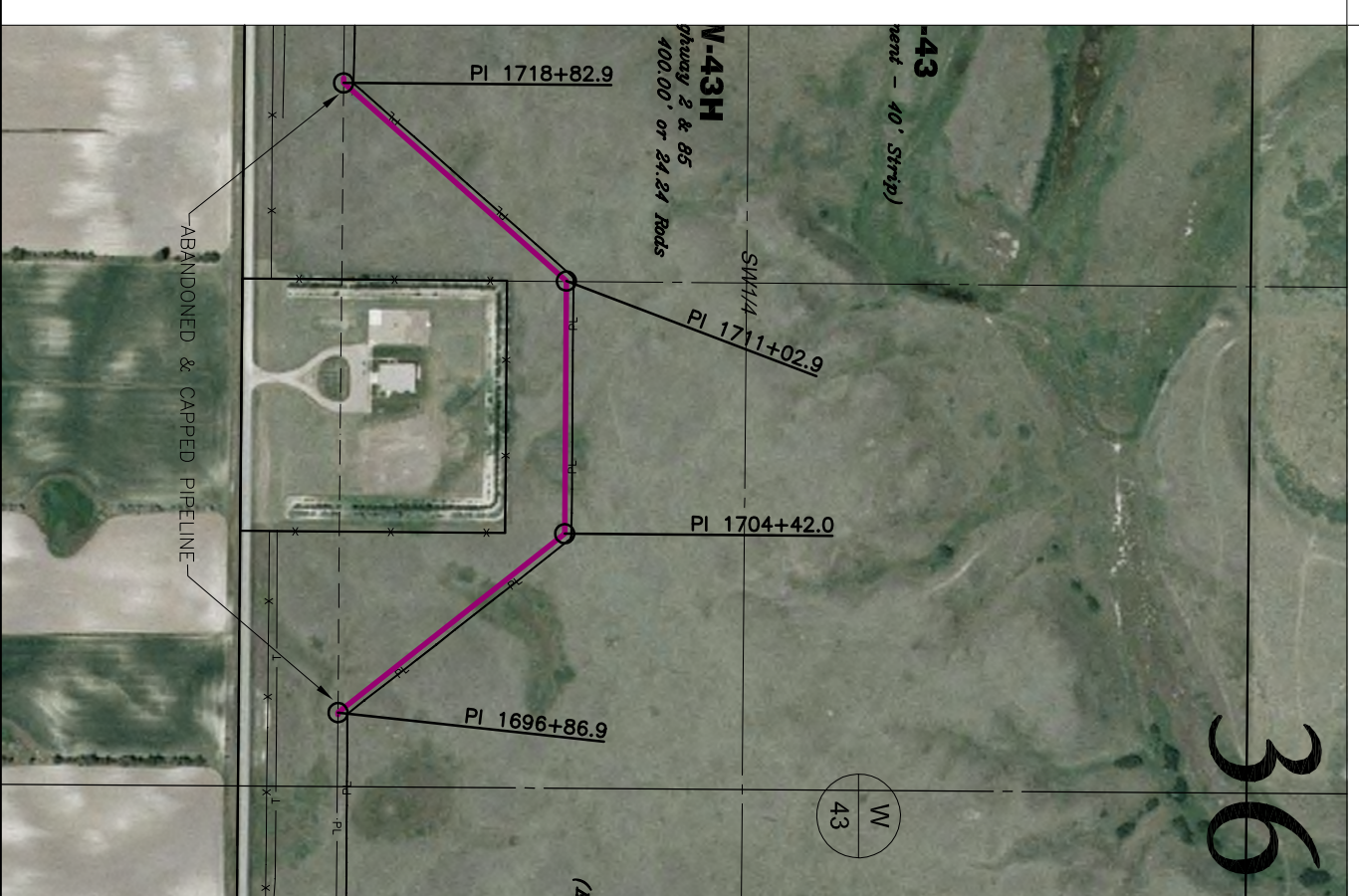
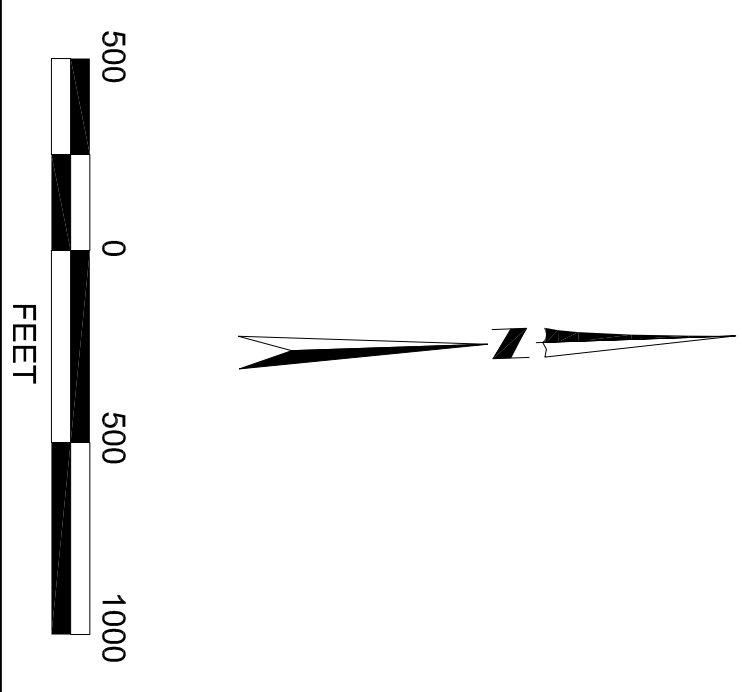


TERRAIN		AGRICULTURE
VEGETATION		PASTURE IMPROVED
OWNERSHIP		STATE OF NORTH DAKOTA
R.O.W. No.	W-43	
RODDAGE	133.0	
ROW WIDTH	75'	
<ul style="list-style-type: none"> (E) ELECTRICAL CROSSING (U) UNIMPROVED ROAD CROSSING (SEE STD-0331) (S) GRAVEL ROAD CROSSING (SEE STD-0330) (A) IMPROVED (ASPHALT) ROAD CROSSING (SEE STD-0332) (H) HIGHWAY CROSSING (SEE STD-032) (R) RAILROAD CROSSING (SEE DWG 2424M001) (P) PIPELINE CROSSING (C) CABLE CROSSING (W) WATER CROSSING (M) AERIAL MARKER (BV) BLOCK VALVE (CP) CP TEST LEAD (FOREIGN) (SEE DWG 2424M001) (CP) CP TEST LEAD (SEE DWG 2424M001) (H) HOTBEND 		



PROFILE	
PI	PI 50° RT PI 49° LT PI 51° LT PI 51° RT
PIPELINE STATIONING	STA. 1718+95 STA. 1718+83 STA. 1711+02 STA. 1704+42 STA. 1696+87 STA. 1696+82
CROSSING LENGTH	
PIPE SPECIFICATION	

PIPE DETAIL AND APPURTENANCES	
GENERAL NOTES	

ITEM	DESCRIPTION	QUANTITY	REFERENCE DRAWINGS	NO.	REVISION	BY	DATE
PIPE E	8.5" X .250 W.T. API 5L X-52 W/FBE	2213					
HB	49" HOT BEND	1					
HB	50" HOT BEND	1					
HB	51" HOT BEND	2					

LEGEND ———— EXISTING PRELIME (ENBRIDGE) ———— EXISTING PIPELINE (UNKNOWN) ———— EXISTING NATURAL GAS PIPELINE (UNDERGROUND) ———— EXISTING TELEPHONE ———— EXISTING ELECTRICAL (OVERHEAD) ———— EXISTING ELECTRICAL (UNDERGROUND) ———— EXISTING FIBER OPTICS * ———— EXISTING FENCE - - - - - ABANDONED & CAPPED PIPELINE (ENBRIDGE)	 Kadmas, Lee & Jackson, Inc. PO Box 290, 677 27th Ave E. Dickinson, ND 58601	 Rooney Engineering, Inc. 12201 E. Arapahoe Rd. Centennial, CO 80112 (303) 792-5911	 AS CONSTRUCTED ALIGNMENT SHEET TRENTON TO BEAVER LODGE NORTH DAKOTA WILLIAMS SCALE: DRAWN: DATE: DRAMING NO: AS SHN CLF 02/27/2008 2424M014-B
--	---	---	--