

## Lein, Jerry R.

---

**From:** Lein, Jerry R.  
**Sent:** Thursday, August 12, 2010 11:51 AM  
**To:** 'Kevin Solie'  
**Cc:** -Grp-PSC Commissioners; -Grp-PSC Public Utilities; -Grp-PSC Legal  
**Subject:** FW: Basin Electric W-2-T structure move request  
**Attachments:** 289-290.pdf

Kevin – Please consider this e-mail to be staff approval of the structure location changes you requested. Thanks.

Jerry Lein  
701 328-1035

---

**From:** Lein, Jerry R.  
**Sent:** Thursday, August 05, 2010 12:18 PM  
**To:** -Grp-PSC Commissioners; -Grp-PSC Public Utilities; -Grp-PSC Legal  
**Subject:** FW: Basin Electric W-2-T structure move request

Please let me know if anybody has thoughts or concerns regarding this structure move request. Otherwise I will plan on issuing staff approval Friday afternoon, August 6<sup>th</sup>. Thanks.

---

**From:** Kevin Solie [mailto:KSolie@bepc.com]  
**Sent:** Thursday, August 05, 2010 11:53 AM  
**To:** Lein, Jerry R.  
**Subject:** Basin Electric W-2-T structure move request

Jerry,

We've got two more structures on Williston to Tioga we are requesting to move. See attached PDF. Structure 289 needs to be moved 30 feet back on tangent because of an underground gas pipeline. Structure 290 needs to be moved back 10 feet as an effect of 289 moving.

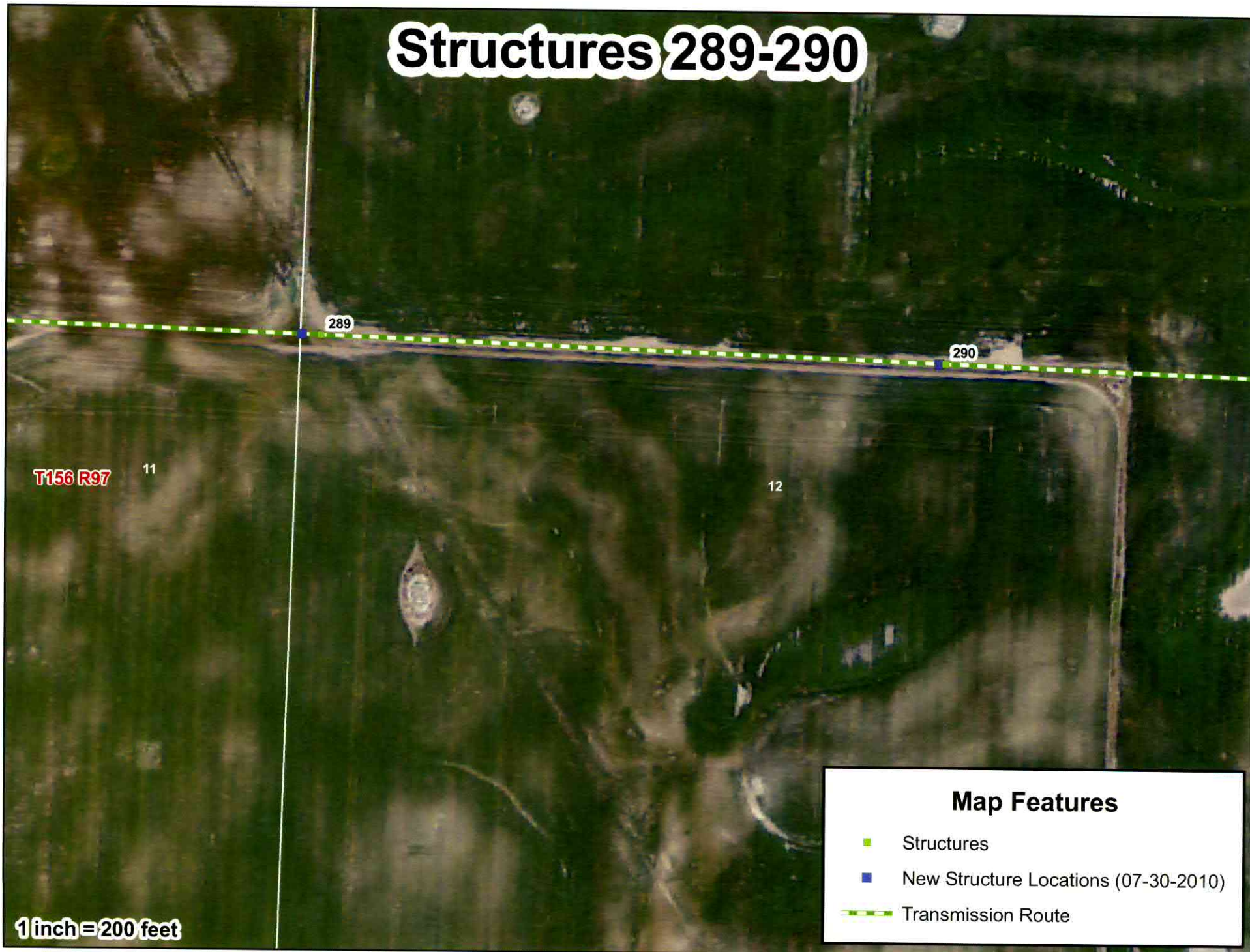
Let me know if you have any questions, comments, or concerns.

Thanks,

Kevin L. Solie  
Senior Environmental Analyst  
Basin Electric Power Cooperative  
1717 East Interstate Ave  
Bismarck, North Dakota 58503

Direct Line: 701.557.5495  
Cell: 701.202.5096

# Structures 289-290



T156 R97

11

12

289

290

## Map Features

- Structures
- New Structure Locations (07-30-2010)
- Transmission Route

1 inch = 200 feet