

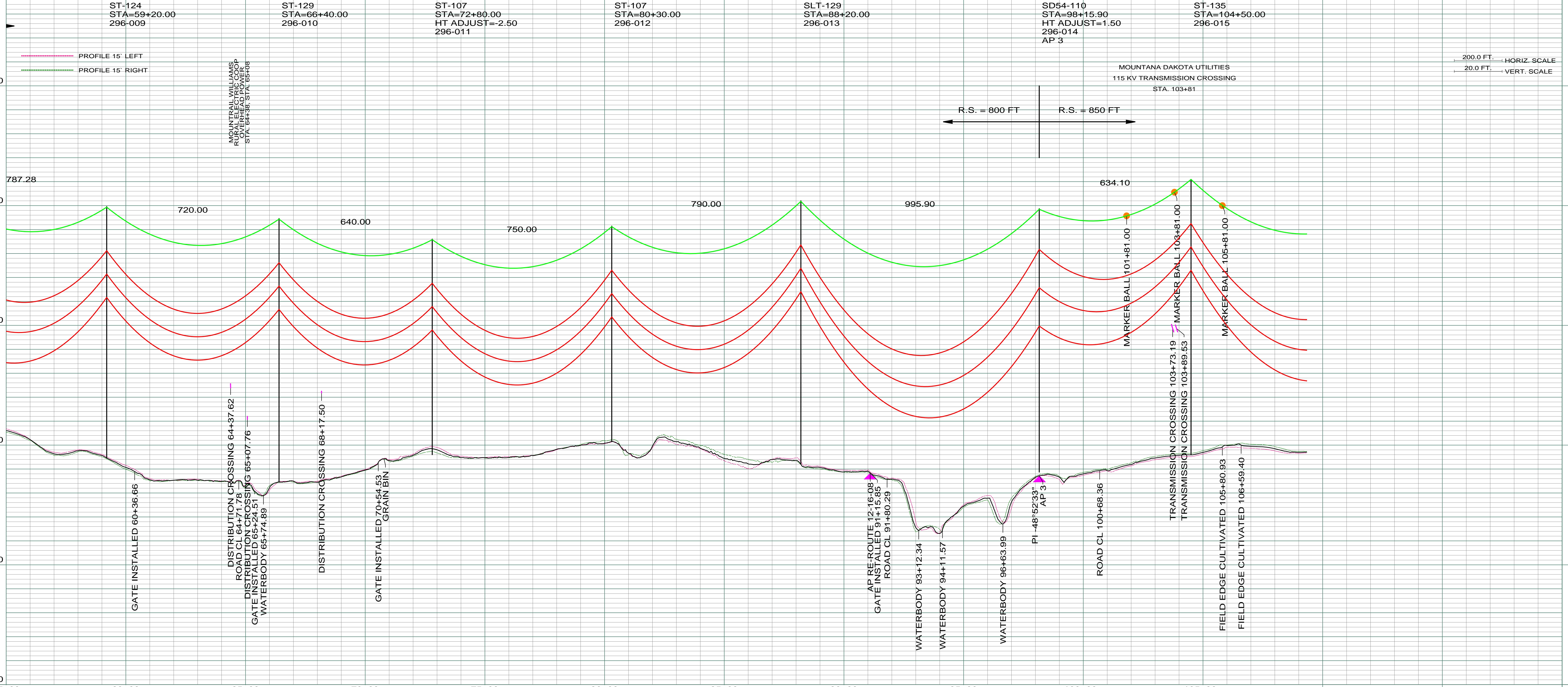
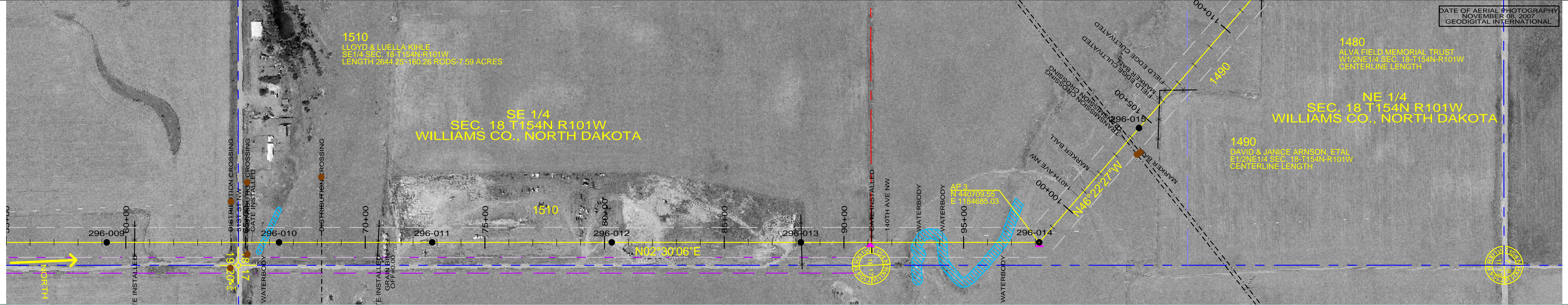
1510
 LLOYD & LUELLA KHILE
 SE 1/4 SEC. 18 T154N R101W
 LENGTH 2644.25' (80.26 RODS) 7.89 ACRES

SE 1/4
 SEC. 18 T154N R101W
 WILLIAMS CO., NORTH DAKOTA

1480
 ALVA FIELD MEMORIAL TRUST
 W 1/2 NE 1/4 SEC. 18 T154N R101W
 CENTERLINE LENGTH

NE 1/4
 SEC. 18 T154N R101W
 WILLIAMS CO., NORTH DAKOTA

1490
 DAVID & JANICE ARNSEN, ETAL
 E 1/2 NE 1/4 SEC. 18 T154N R101W
 CENTERLINE LENGTH



REV	DESCRIPTION	DRWN	DSGN	APPD	DATE	REV	DESCRIPTION	DRWN	DSGN	APPD	DATE
1	MOVED STR 9 BK 10 FEET, ISSUE FOR BID	CDB	CDB	DAM	10/22/09						
2	ADDED MARKER BALL LOCATIONS ISSUED FOR CONSTRUCTION	CDB	CDB	DAM	02/03/10						
3	MODIFIED CROSSING TEXT AND MILE INFORMATION	CDB	CDB	DAM	03/11/10						
4	AS-BUILT	CDB	CDB	DAM	03/07/11						

STATE NAME: NORTH DAKOTA		NAD83 NDCSPCS INTL FT NORTH ZONE				DESIGN BY:	DAM/CDB	10/12/09
DESIGN INFORMATION						DRAWN BY:	CDB	10/12/09
CONDUCTOR	SIZE	STRINGING TENSION	NECS TENSION	DESIGN R.S.	ACTUAL R.S.	DESIGN CHK:	MBN ENGRG.	01/08/10
	1272 MCM 45/7 ACSR	6501	12617	800	804	DRAFT CHK:		
	OPGW AC-71/571	2285	5932	800	804	APPROVED:	DAM	10/12/09

FACILITY:	TRANSMISSION SYSTEM MAINTENANCE
LOCATION UNIT:	296-230KV LINE-WILLISTON SUBSTATION TO TIOGA SUBSTATION
WILLISTON TO TIOGA 230KV TRANSMISSION LINE	
PLAN AND PROFILE	
MILE 1 & 2	

SCALE:	AS SHOWN	COUNTY NAME:	WILLIAMS
BASIN DRAWING NO.	296-090-T3-002	REV.	4