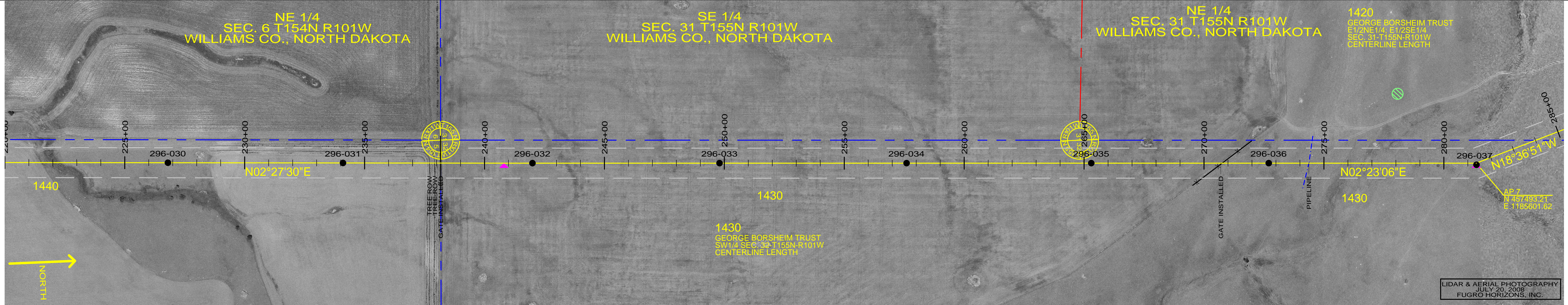


NE 1/4
SEC. 6 T154N R101W
WILLIAMS CO., NORTH DAKOTA

SE 1/4
SEC. 31 T155N R101W
WILLIAMS CO., NORTH DAKOTA

NE 1/4
SEC. 31 T155N R101W
WILLIAMS CO., NORTH DAKOTA

1420
GEORGE BORSHEIM TRUST
E1/2NE1/4, E1/2SE1/4
SEC. 31-T155N-R101W
CENTERLINE LENGTH



LIDAR & AERIAL PHOTOGRAPHY
JULY 20, 2009
FUGRO HORIZONS, INC.

ST-113
STA=226+80.00
296-030

ST-113
STA=234+10.00
296-031

ST-113
STA=242+00.00
296-032

ST-113
STA=249+80.00
296-033

ST-113
STA=257+60.00
296-034

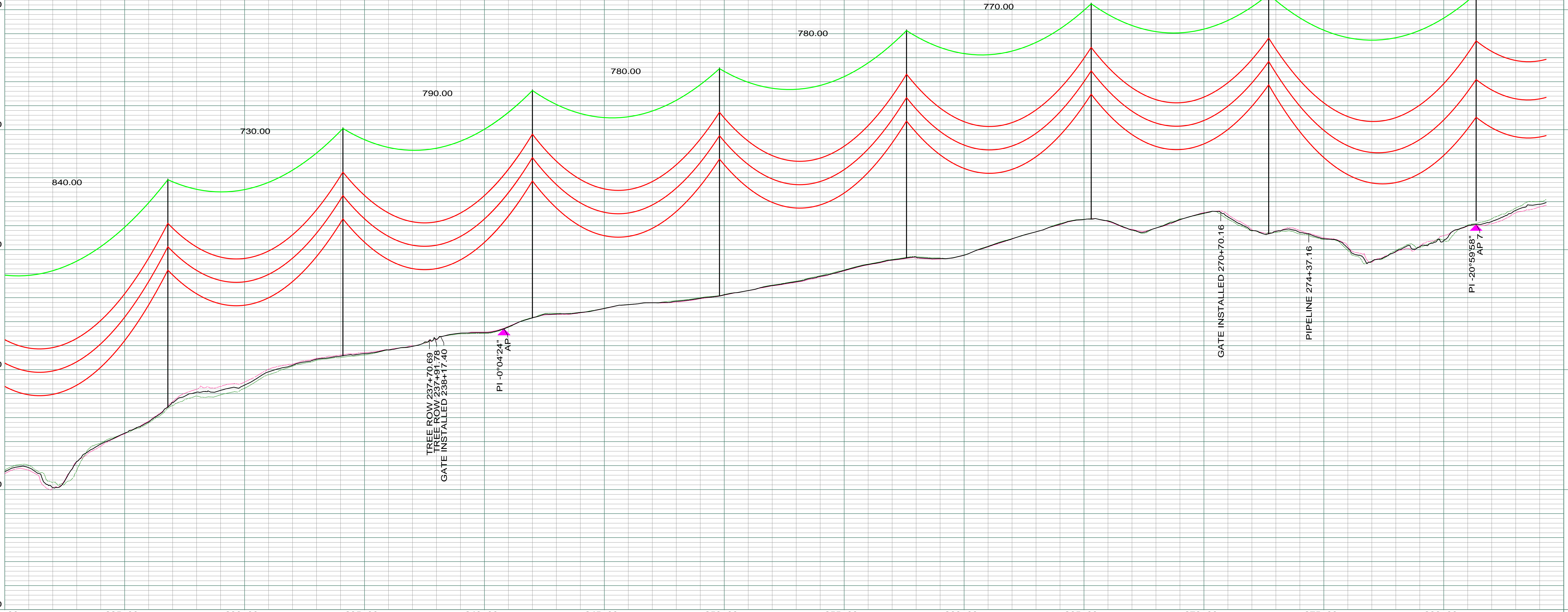
ST-107
STA=265+30.00
296-035

ST-118
STA=272+70.00
296-036

SA28-095
STA=281+35.00
HT ADJUST=1.50
OFFSET ADJUST=6.80
296-037
AP 7

200.0 FT. HORIZ. SCALE
20.0 FT. VERT. SCALE

PROFILE 15' LEFT
PROFILE 15' RIGHT



REV	DESCRIPTION	DRWN	DSGN	APPD	DATE	REV	DESCRIPTION	DRWN	DSGN	APPD	DATE
1	MOVED STR 37 10 FEET AHD TO STATION 272+70, ISSUE FOR BID	CDB	CDB	DAM	10/22/09						
2	ISSUED FOR CONSTRUCTION	CDB	CDB	DAM	02/03/10						
3	MODIFIED CROSSING TEXT AND MILE INFORMATION	CDB	CDB	DAM	03/11/10						
4	AS-BUILT	CDB	CDB	DAM	03/07/11						

STATE NAME: NORTH DAKOTA		NAD83 NDSPCS INTL FT NORTH ZONE				DESIGN BY:	10/12/09
DESIGN INFORMATION		DESIGN BY:	DAM/CDB	10/12/09	FACILITY: TRANSMISSION SYSTEM MAINTENANCE		
CONDUCTOR	1272 MCM 45/7 ACSR	DESIGN BY:	CDB	10/12/09	LOCATION UNIT: 296-230KV LINE-WILLISTON SUBSTATION TO TIOGA SUBSTATION		
OPGW	AC-71/571	DESIGN CHK:	MBN ENGRG.	01/08/10	WILLISTON TO TIOGA 230KV TRANSMISSION LINE		
STRINGING TENSION	6501	DRAFT CHK:			SCALE: AS SHOWN		
NESC TENSION	12617	APPROVED:	DAM	10/12/09	COUNTY NAME: WILLIAMS		
DESIGN R.S.	800	BASIN DRAWING NO. 296-090-T3-006		REV. 4	PLAN AND PROFILE		
ACTUAL R.S.	798	MILE 4 & 5					