

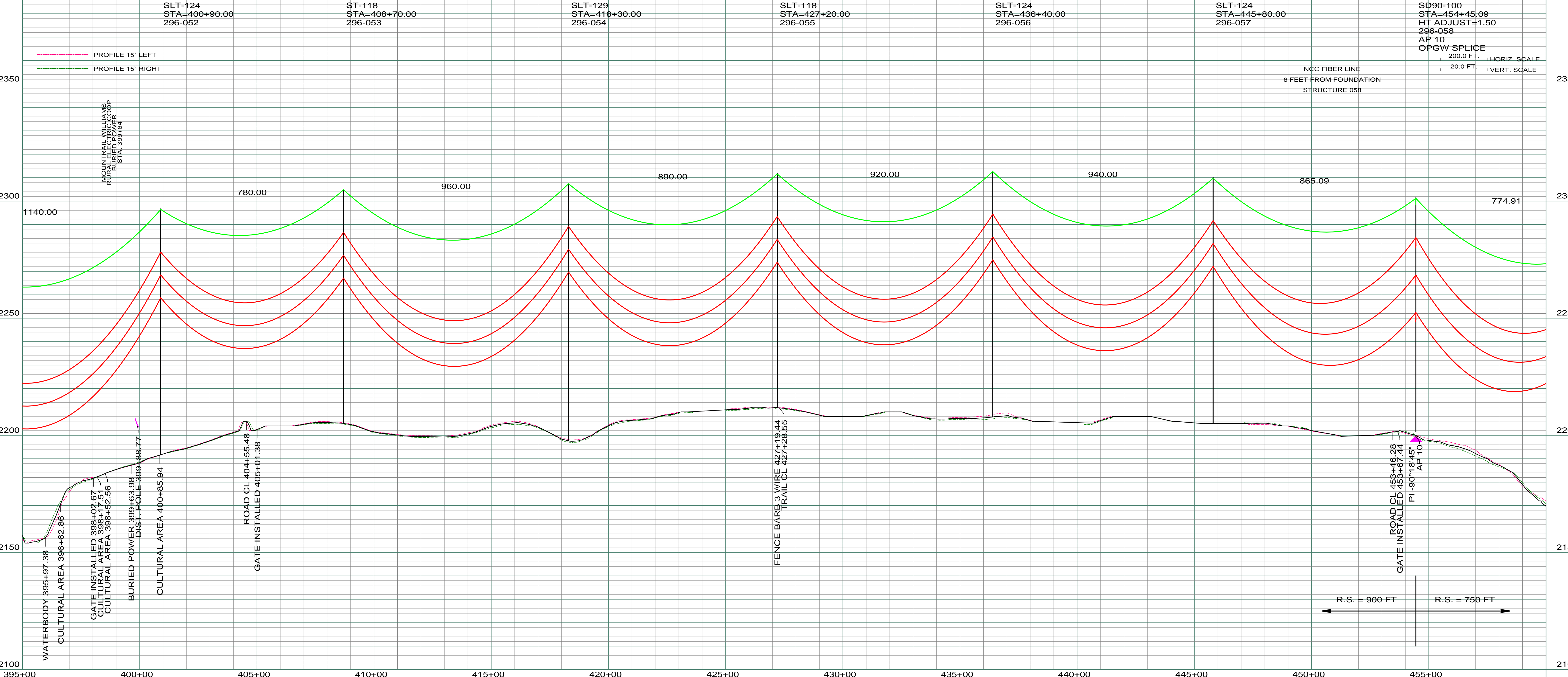
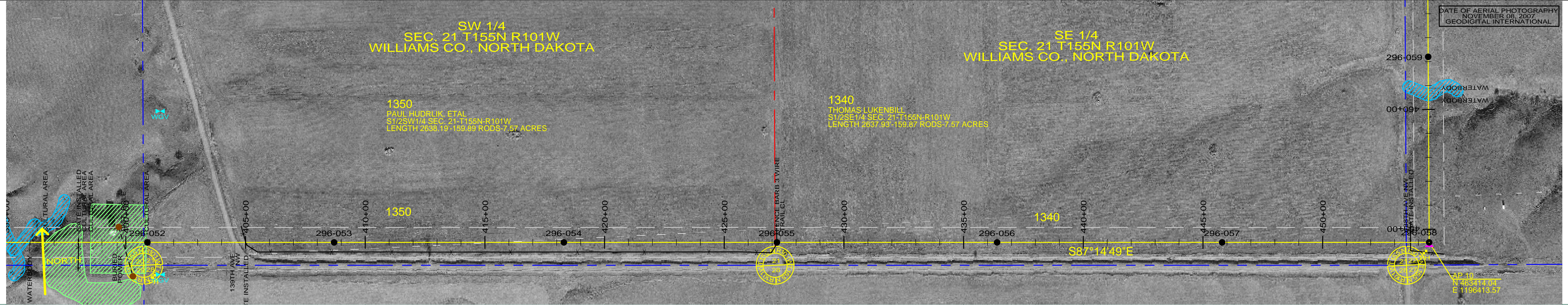
SW 1/4  
SEC. 21 T155N R101W  
WILLIAMS CO., NORTH DAKOTA

SE 1/4  
SEC. 21 T155N R101W  
WILLIAMS CO., NORTH DAKOTA

1350  
PAUL HUDRLIK, ET AL  
S1/2SW1/4 SEC. 21-T155N-R101W  
LENGTH 2638.19'-159.89' RODS-7.57 ACRES

1340  
THOMAS LUKENBILL  
S1/2SE1/4 SEC. 21-T155N-R101W  
LENGTH 2637.93'-159.87' RODS-7.57 ACRES

DATE OF AERIAL PHOTOGRAPHY  
NOVEMBER 08, 2007  
GEODIGITAL INTERNATIONAL



REV	DESCRIPTION	DRWN	DSGN	APPD	DATE	REV	DESCRIPTION	DRWN	DSGN	APPD	DATE
1	ISSUE FOR BID	CDB	CDB	DAM	10/22/09						
2	ISSUED FOR CONSTRUCTION	CDB	CDB	DAM	02/03/10						
3	MODIFIED CROSSING TEXT AND MILE INFORMATION	CDB	CDB	DAM	03/11/10						
4	AS-BUILT	CDB	CDB	DAM	03/07/11						

STATE NAME	NAD83 NDSPCS INTL FT NORTH ZONE
NORTH DAKOTA	

DESIGN INFORMATION					
CONDUCTOR	SIZE	STRINGING TENSION	NESC TENSION	DESIGN R.S.	ACTUAL R.S.
	1272 MCM 45/7 ACSR	6501	12617	900	915
	OPGW	AC-71/571	2277	6131	900

DESIGN BY:	DAM/CDB	10/12/09
DRAWN BY:	CDB	10/12/09
DESIGN CHK:	MBN ENGRG.	01/08/10
DRAFT CHK:		
APPROVED:	DAM	10/12/09

FACILITY: TRANSMISSION SYSTEM MAINTENANCE  
 LOCATION UNIT: 296-230KV LINE-WILLISTON SUBSTATION TO TIOGA SUBSTATION  
 WILLISTON TO TIOGA 230KV TRANSMISSION LINE  
 PLAN AND PROFILE  
 MILE 7 & 8

SCALE: AS SHOWN  
 COUNTY NAME: WILLIAMS  
 BASIN DRAWING NO. 296-090-T3-009  
 REV. 4