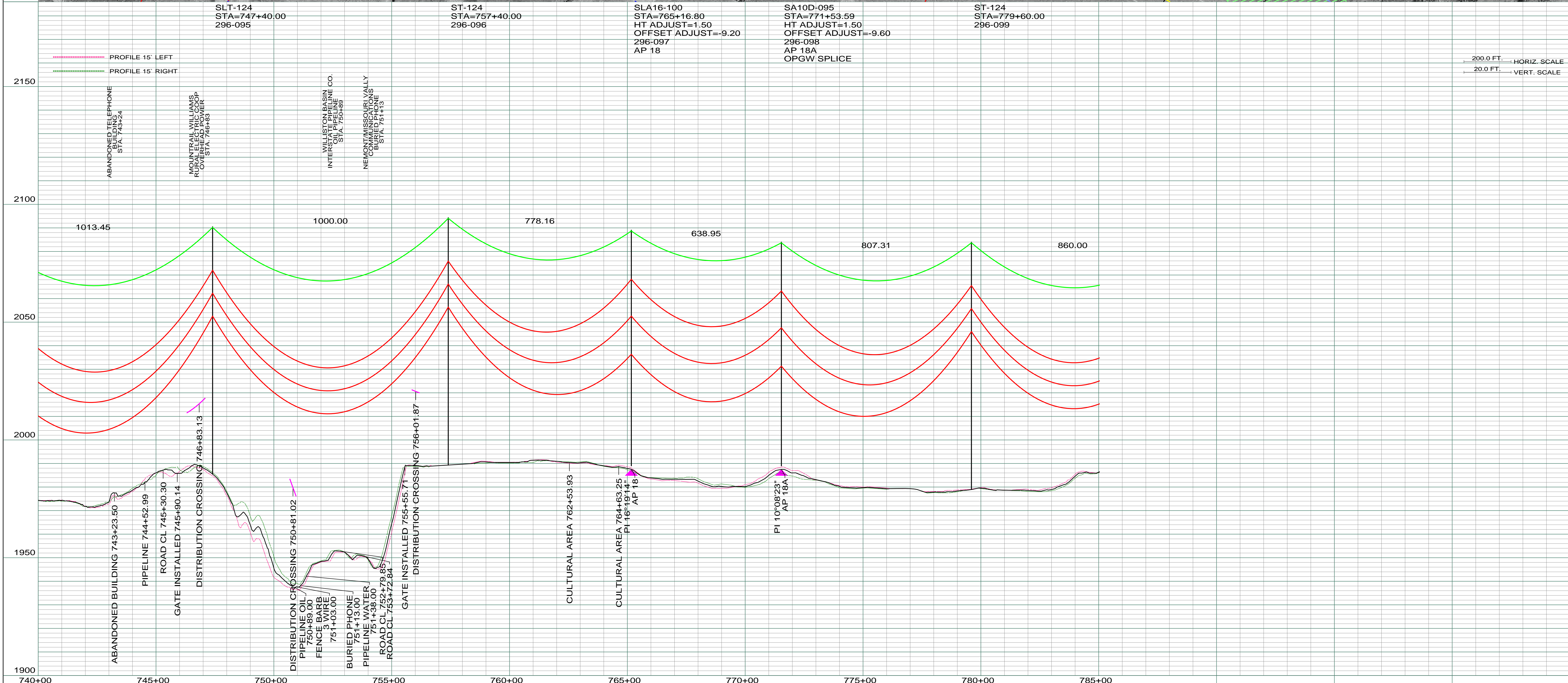




LIDAR & AERIAL PHOTOGRAPHY  
JULY 20, 2009  
EUGRO HORIZONS, INC.



200.0 FT. HORIZ. SCALE  
20.0 FT. VERT. SCALE

REV	DESCRIPTION	DRWN	DSGN	APPD	DATE
1	ISSUE FOR BID	CDB	CDB	DAM	10/27/09
2	ISSUED FOR CONSTRUCTION	CDB	CDB	DAM	02/03/10
3	MODIFIED CROSSING TEXT AND MILE INFORMATION	CDB	CDB	DAM	03/11/10
4	AS-BUILT	CDB	CDB	DAM	03/07/11

REV	DESCRIPTION	DRWN	DSGN	APPD	DATE
1	SLT-124 STA=747+40.00 296-095				
2	ST-124 STA=757+40.00 296-096				
3	SLA16-100 STA=765+16.80 HT ADJUST=1.50 OFFSET ADJUST=-9.20 296-097 AP 18				
4	SA10D-095 STA=771+53.59 HT ADJUST=1.50 OFFSET ADJUST=-9.60 296-098 AP 18A OPGW SPLICE				
5	SIT-124 STA=779+60.00 296-099				

DESIGN INFORMATION		DESIGN R.S.		ACTUAL R.S.	
CONDUCTOR	1272 MCM 45/7 ACSR	STRINGING TENSION	6501	NESC TENSION	12617
OPGW	AC-71/571	STRINGING TENSION	2277	NESC TENSION	6131
		DESIGN R.S.	850	ACTUAL R.S.	870
		DESIGN R.S.	900	ACTUAL R.S.	899

DESIGN BY:	DATE
DAM/CDB	10/12/09
DRAWN BY:	DATE
CDB	10/12/09
DESIGN CHK:	DATE
MBN ENGRG.	01/08/10
DRAFT CHK:	DATE
APPROVED:	DATE
DAM	10/12/09

FACILITY: TRANSMISSION SYSTEM MAINTENANCE  
LOCATION UNIT: 296-230KV LINE-WILLISTON SUBSTATION TO TIOGA SUBSTATION  
WILLISTON TO TIOGA 230KV TRANSMISSION LINE  
SCALE: AS SHOWN  
COUNTY NAME: WILLIAMS  
BASIN DRAWING NO. 296-090-T3-016  
MILE 14

<p>BASIN ELECTRIC POWER COOPERATIVE 1717 EAST INTERSTATE AVENUE BISMARCK, NORTH DAKOTA PHONE 701-223-0441</p>	<p>SCALE: AS SHOWN</p>	<p>COUNTY NAME: WILLIAMS</p>
	<p>BASIN DRAWING NO. 296-090-T3-016</p>	<p>REV. 4</p>