

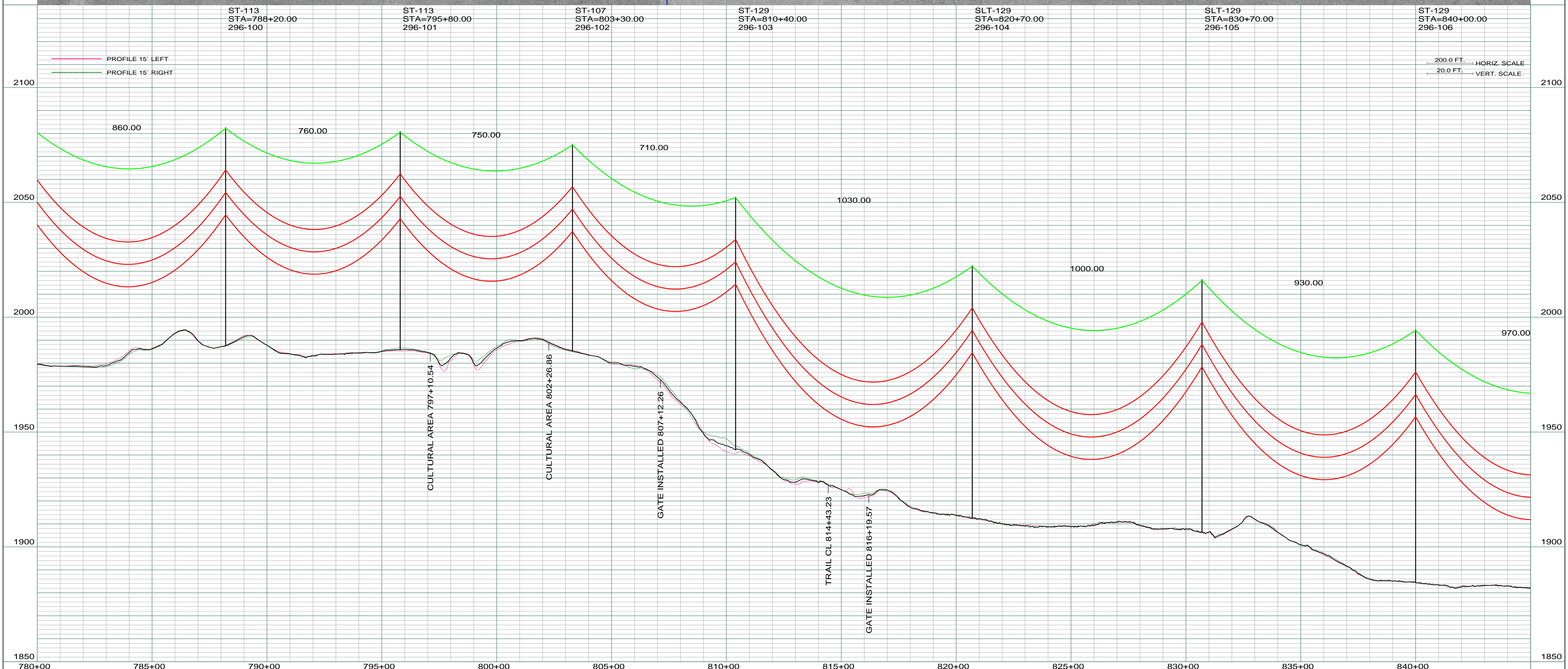
SW 1/4
SEC. 31 T156N R100W
WILLIAMS CO., NORTH DAKOTA

SE 1/4
SEC. 36 T156N R101W
WILLIAMS CO., NORTH DAKOTA

1170
WADE & MELISSA SMITH
S1/2 SEC. 31 T156N R100W
CENTERLINE LENGTH 6088.19 - 308.38 RODS - 14.60 ACRES

1180
STATE OF NORTH DAKOTA
SE 1/4 SEC. 36 T156N R101W
LENGTH 2646.97 - 160.42 RODS - 7.60 ACRES

LIDAR & AERIAL PHOTOGRAPHY
JULY 20, 2009
FUGRO HORIZONS, INC.



REV	DESCRIPTION	DRWN	DSGN	APPD	DATE	REV	DESCRIPTION	DRWN	DSGN	APPD	DATE
1	ISSUE FOR BID	CDB	CDB	DAM	10/27/09	5	AS-BUILT	CDB	CDB	DAM	03/07/11
2	ISSUED FOR CONSTRUCTION	CDB	CDB	DAM	02/03/10						
3	MODIFIED CROSSING TEXT AND MILE INFORMATION	CDB	CDB	DAM	03/11/10						
4	MOVED STRS 101 100FT BK, 102 40FT BK, 103 40FT BK, 104 10FT BK, AND 105 10FT BK	CDB	CDB	DAM	06/04/10						

DESIGN INFORMATION		DESIGN BY:		DATE	
CONDUCTOR	1272 MCM 45/7 ACSR	DAM/CDB		10/12/09	
OPGW	AC-71/571	CDB		10/12/09	
STRINGING TENSION	6501				
NESC TENSION	12617				
DESIGN R.S.	850				
ACTUAL R.S.	870				

WILLISTON TO TIOGA 230KV TRANSMISSION LINE		SCALE:		COUNTY NAME:	
MILE 14 & 15		AS SHOWN		WILLIAMS	
BASIN DRAWING NO.		REV.			
296-090-T3-017		5			