

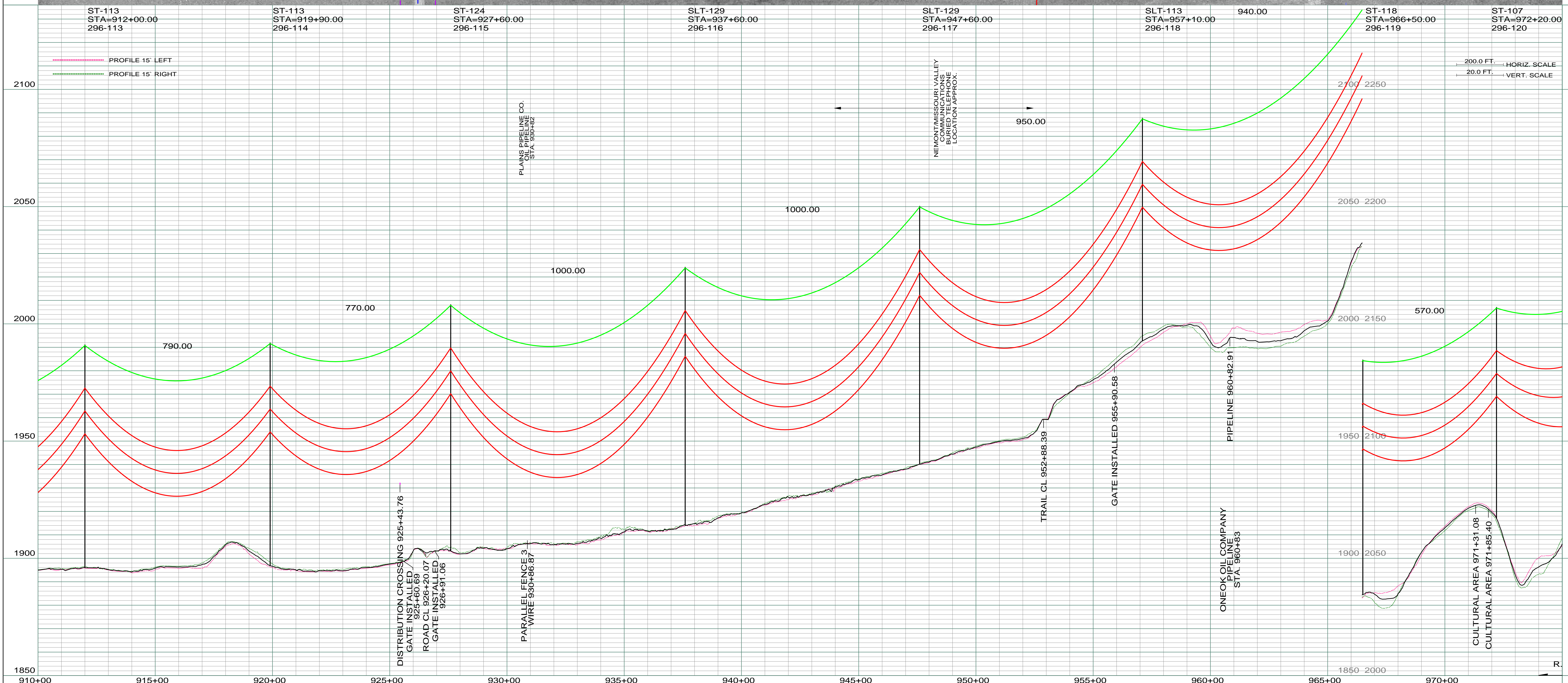
1130
 BRUCE D. ROBINSON, ETAL
 N1/2SE1/4, SEC. 33, T156N R100W
 LENGTH 2640.45-160.03 RODS-7.58 ACRES

1110
 GRACE D. ROBINSON, ETAL
 E1/2E1/2, W1/2SE1/4, N1/2SW1/4 SEC. 33, T156N R100W
 LENGTH 9080.73-550.35 RODS-26.06 ACRES

SW 1/4
 SEC. 33 T156N R100W
 WILLIAMS CO., NORTH DAKOTA

SE 1/4
 SEC. 33 T156N R100W
 WILLIAMS CO., NORTH DAKOTA

LIDAR & AERIAL PHOTOGRAPHY
 JULY 20, 2009
 FUGRO HORIZONS, INC.



REV	DESCRIPTION	DRWN	DSGN	APPD	DATE	REV	DESCRIPTION	DRWN	DSGN	APPD	DATE
1	MOVED STR 107 AH 10 FEET, ISSUE FOR BID	CDB	CDB	DAM	10/22/09						
2	MOVED STRS 113,114,115,116,117,118, 119,120 NORTH 62.5 FT, ISSUED FOR CONSTRUCTION	CDB	CDB	DAM	02/03/10						
3	MODIFIED CROSSING TEXT AND MILE INFORMATION	CDB	CDB	DAM	03/11/10						
4	AS-BUILT	CDB	CDB	DAM	03/07/11						

DESIGN INFORMATION						DESIGN BY:		DATE		FACILITY:		LOCATION UNIT:		SCALE:		COUNTY NAME:			
STATE NAME: NORTH DAKOTA						NAD83 NDSPCS INTL FT NORTH ZONE		DAM/CDB		10/12/09		TRANSMISSION SYSTEM MAINTENANCE		AS SHOWN		WILLIAMS			
CONDUCTOR						1272 MCM 45/7 ACSR	6501	12617	850	870	DRAWN BY: CDB		10/12/09		MILE 17 & 18		REV.		
OPGW						AC-71/571	2281	6035	850	865	DESIGN CHK: MBN ENGRG.		01/08/10		296-090-T3-019		4		
DESIGN R.S.						850	850	850	850	DRAFT CHK:									
ACTUAL R.S.						870	865	850	865	APPROVED: DAM		10/12/09							