

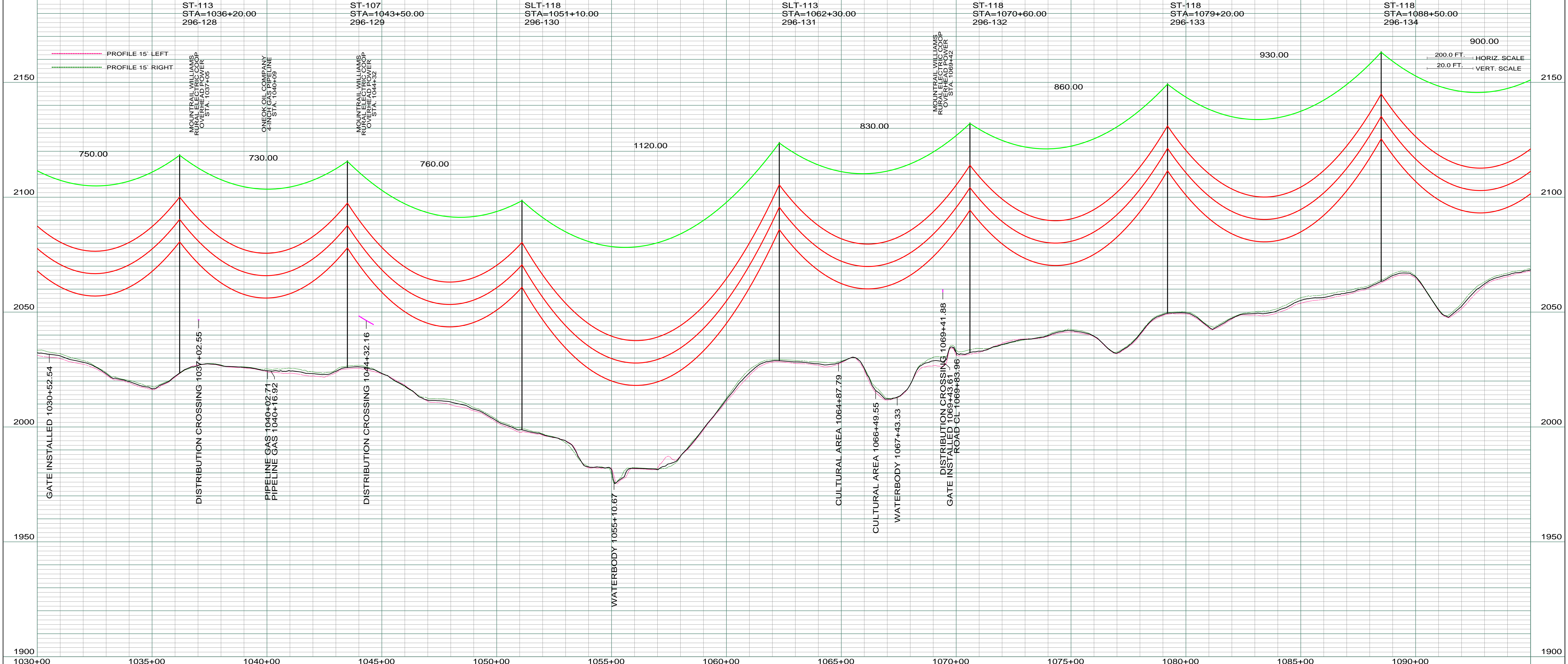
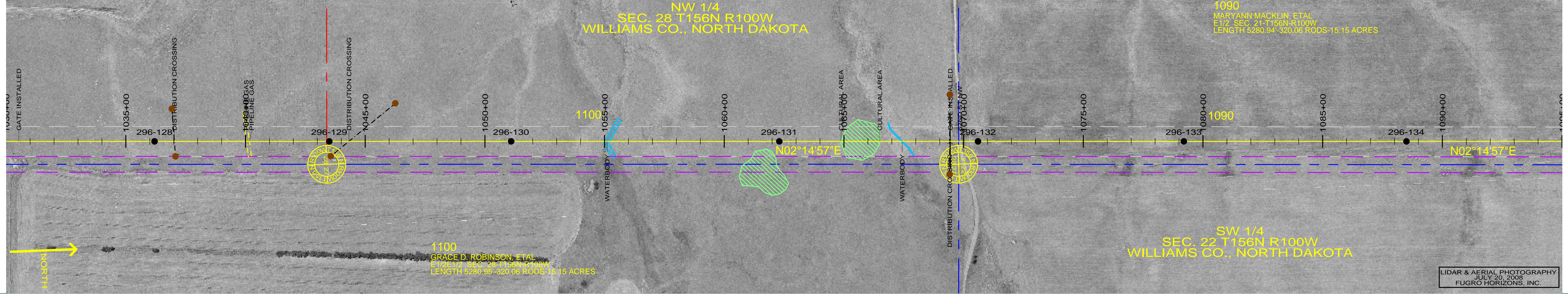
NW 1/4
SEC. 28 T156N R100W
WILLIAMS CO., NORTH DAKOTA

1090
MARYANN MACKEN, ETAL
E 1/2 SEC. 21 T156N R100W
LENGTH 5280.94' 320.00' RODS-15.15 ACRES

1100
GRACE D. ROBINSON, ETAL
E 1/2 SEC. 28 T156N R100W
LENGTH 5280.95' 320.00' RODS-15.15 ACRES

SW 1/4
SEC. 22 T156N R100W
WILLIAMS CO., NORTH DAKOTA

LIDAR & AERIAL PHOTOGRAPHY
JULY 20, 2008
FUGRO HORIZONS, INC.



REV	DESCRIPTION	DRWN	DSGN	APPD	DATE	REV	DESCRIPTION	DRWN	DSGN	APPD	DATE
1	ISSUE FOR BID	CDB	CDB	DAM	10/27/09						
2	ISSUED FOR CONSTRUCTION	CDB	CDB	DAM	02/03/10						
3	MODIFIED CROSSING TEXT AND MILE INFORMATION	CDB	CDB	DAM	03/11/10						
4	AS-BUILT	CDB	CDB	DAM	03/07/11						

DESIGN INFORMATION	
SIZE	STRINGING TENSION
CONDUCTOR 1272 MCM 45/7 ACSR	6501
OPGW AC-71/571	2281

DESIGN INFORMATION	
STRINGING TENSION	NESC TENSION
850	12617
850	6035

DESIGN INFORMATION	
DESIGN R.S.	ACTUAL R.S.
850	879
850	879

DESIGN INFORMATION	
DESIGN BY:	DATE
DAM/CDB	10/12/09
DRAWN BY:	DATE
CDB	10/12/09
DESIGN CHK:	DATE
MBN ENGRG.	01/08/10
DRAFT CHK:	
APPROVED:	DATE
DAM	10/12/09

STATE NAME: NORTH DAKOTA NAD83 NDSPCS INTL FT NORTH ZONE

FACILITY: TRANSMISSION SYSTEM MAINTENANCE

LOCATION UNIT: 296-230KV LINE-WILLISTON SUBSTATION TO TIOGA SUBSTATION

WILLISTON TO TIOGA 230KV TRANSMISSION LINE

SCALE: AS SHOWN

COUNTY NAME: WILLIAMS

BASIN DRAWING NO. 296-090-T3-021

REV. 4

PLAN AND PROFILE
MILE 19 & 20