

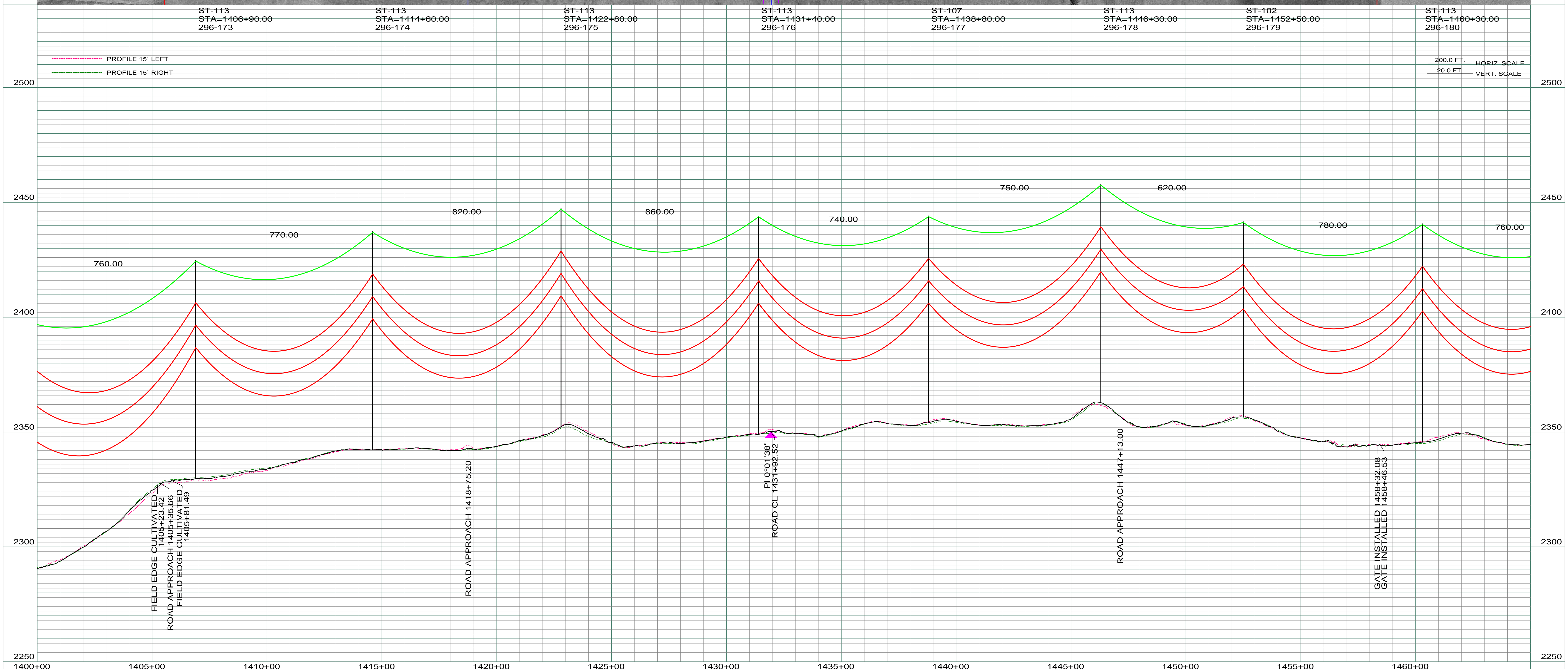
0980
 VIOLET THOMAS
 E1/2NE1/4 SEC. 17-T156N-R99W
 LENGTH 1320.06' - 80.00 RODS-3.79 ACRES

0970
 DONALD & BETTY CHRISTOPHERSON
 NW1/4 SEC. 16-T156N-R99W
 LENGTH 2637.47'-159.88 RODS-7.57 ACRES

NE 1/4
 SEC. 17 T156N R99W
 WILLIAMS CO., NORTH DAKOTA

NW 1/4
 SEC. 16 T156N R99W
 WILLIAMS CO., NORTH DAKOTA

LIDAR & AERIAL PHOTOGRAPHY
 JULY 20, 2008
 FUGRO HORIZONS, INC.



REV	DESCRIPTION	DRWN	DSGN	APPD	DATE	REV	DESCRIPTION	DRWN	DSGN	APPD	DATE
1	ISSUE FOR BID	CDB	CDB	DAM	10/27/09	5	AS-BUILT	CDB	CDB	DAM	03/07/11
2	ISSUED FOR CONSTRUCTION	CDB	CDB	DAM	02/03/10						
3	MODIFIED CROSSING TEXT AND MILE INFORMATION CHANGED STR 178 TO ST-113, MOVED AHEAD 40 FT	CDB	CDB	DAM	03/11/10						
4	REMOVED MWREC DISTRIBUTION CROSSING AT STATION 1447+32	CDB	CDB	DAM	03/07/11						

DESIGN INFORMATION		DESIGN BY:		DATE	
CONDUCTOR	1272 MCM 45/7 ACSR	DAM/CDB	10/12/09	FACILITY: TRANSMISSION SYSTEM MAINTENANCE	
OPGW	AC-71/571	CDB	10/12/09	LOCATION UNIT: 296-230KV LINE-WILLISTON SUBSTATION TO TIOGA SUBSTATION	
STRINGING TENSION	6501	DESIGN R.S.	01/08/10	WILLISTON TO TIOGA 230KV TRANSMISSION LINE	
NESC TENSION	12617	DRAFT CHK:		SCALE: AS SHOWN	
DESIGN R.S.	800	APPROVED:	DAM	COUNTY NAME: WILLIAMS	
ACTUAL R.S.	799			BASIN DRAWING NO. 296-090-T3-028	
	765			REV. 5	