

0930  
ROBERT & LOUISE HALSETH, ETAL  
N1/2NE1/4 SEC. 15 T156N R99W  
LENGTH 2638.25-159.89 RODS-7.57 ACRES

0920  
HARVEY & LORETTA STEVENS  
NW1/4 SEC. 14 T156N R99W  
LENGTH 2642.79-160.17 RODS-7.56 ACRES

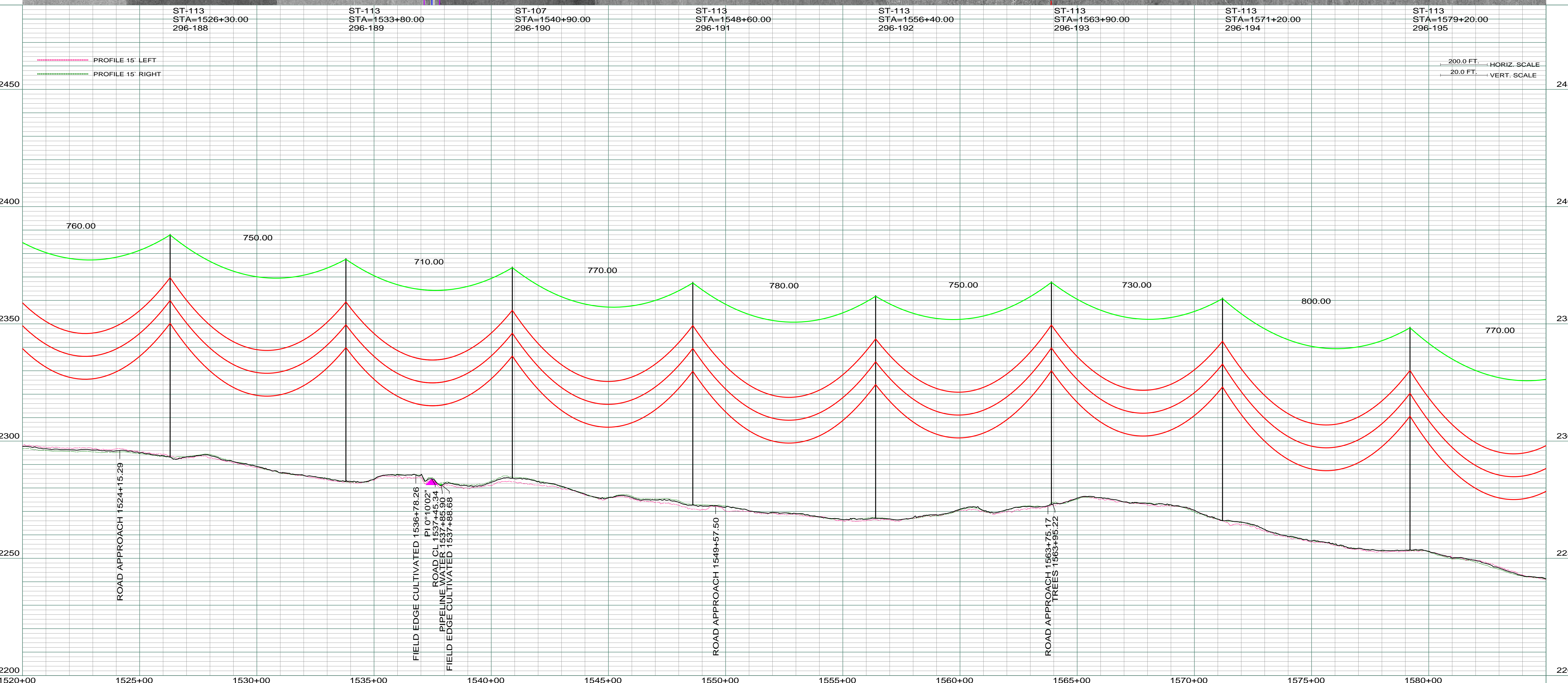
0910  
DUANE BAEGLER  
NE1/4 SEC. 14 T156N R99W  
LENGTH 2642.79-180.17 RODS-7.58 ACRES

NE 1/4  
SEC. 15 T156N R99W  
WILLIAMS CO., NORTH DAKOTA

NW 1/4  
SEC. 14 T156N R99W  
WILLIAMS CO., NORTH DAKOTA

NE 1/4  
SEC. 14 T156N R99W  
WILLIAMS CO., NORTH DAKOTA

LIDAR & AERIAL PHOTOGRAPHY  
JULY 20, 2008  
FUGRO HORIZONS, INC.



| REV | DESCRIPTION                                 | DRWN | DSGN | APPD | DATE     | REV | DESCRIPTION | DRWN | DSGN | APPD | DATE |
|-----|---|------|------|------|----------|-----|-------------|------|------|------|------|
| 1   | ISSUE FOR BID                               | CDB  | CDB  | DAM  | 10/27/09 |     |             |      |      |      |      |
| 2   | ISSUED FOR CONSTRUCTION                     | CDB  | CDB  | DAM  | 02/03/10 |     |             |      |      |      |      |
| 3   | MODIFIED CROSSING TEXT AND MILE INFORMATION | CDB  | CDB  | DAM  | 03/11/10 |     |             |      |      |      |      |
| 4   | AS-BUILT                                    | CDB  | CDB  | DAM  | 03/07/11 |     |             |      |      |      |      |

| STATE NAME: NORTH DAKOTA |           | NAD83 NDSPCS INTL FT NORTH ZONE |              |             |             | DESIGN BY:   | 10/12/09     |
|--------------------------|-----------|---------------------------------|--------------|-------------|-------------|--|--------------|
| DESIGN INFORMATION       |           |                                 |              |             |             |  |              |
| CONDUCTOR                | SIZE      | STRINGING TENSION               | NESC TENSION | DESIGN R.S. | ACTUAL R.S. | DRAWN BY:  | 10/12/09     |
| OPGW                     | AC-71/571 | 2285                            | 5932         | 800         | 816         | DESIGN CHK:  | 01/08/10     |
|                          |           |                                 |              |             |             | DRAFT CHK:   |              |
|                          |           |                                 |              |             |             | APPROVED:  | 10/12/09     |
|                          |           |                                 |              |             |             | FACILITY: TRANSMISSION SYSTEM MAINTENANCE                              |              |
|                          |           |                                 |              |             |             | LOCATION UNIT: 296-230KV LINE-WILLISTON SUBSTATION TO TIOGA SUBSTATION |              |
|                          |           |                                 |              |             |             | WILLISTON TO TIOGA 230KV TRANSMISSION LINE                             |              |
|                          |           |                                 |              |             |             | SCALE:   | COUNTY NAME: |
|                          |           |                                 |              |             |             | AS SHOWN   | WILLIAMS     |
|                          |           |                                 |              |             |             | BASIN DRAWING NO.  | REV.         |
|                          |           |                                 |              |             |             | 296-090-T3-030   | 4            |