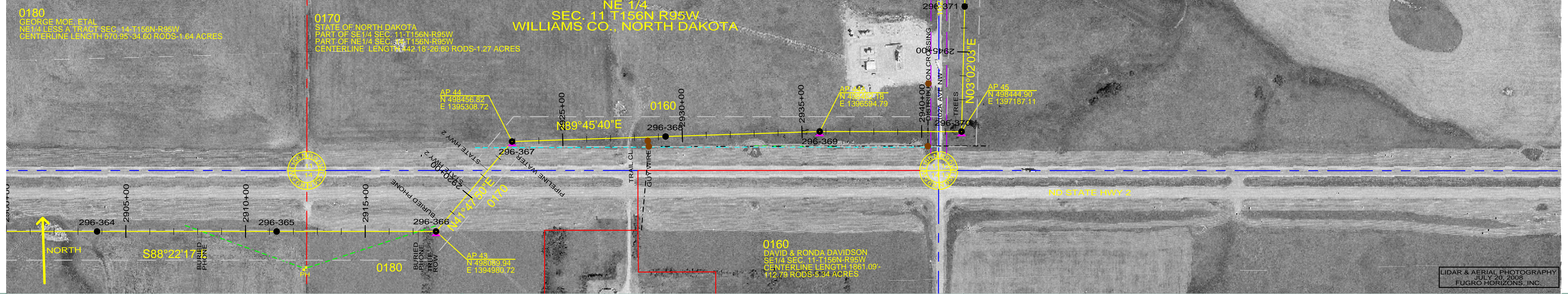


0180  
 GEORGE MOE, ETAL  
 NE 1/4 LESS A TRACT SEC. 14 T156N R95W  
 CENTERLINE LENGTH 570.95'-34.60 RODS-1.64 ACRES

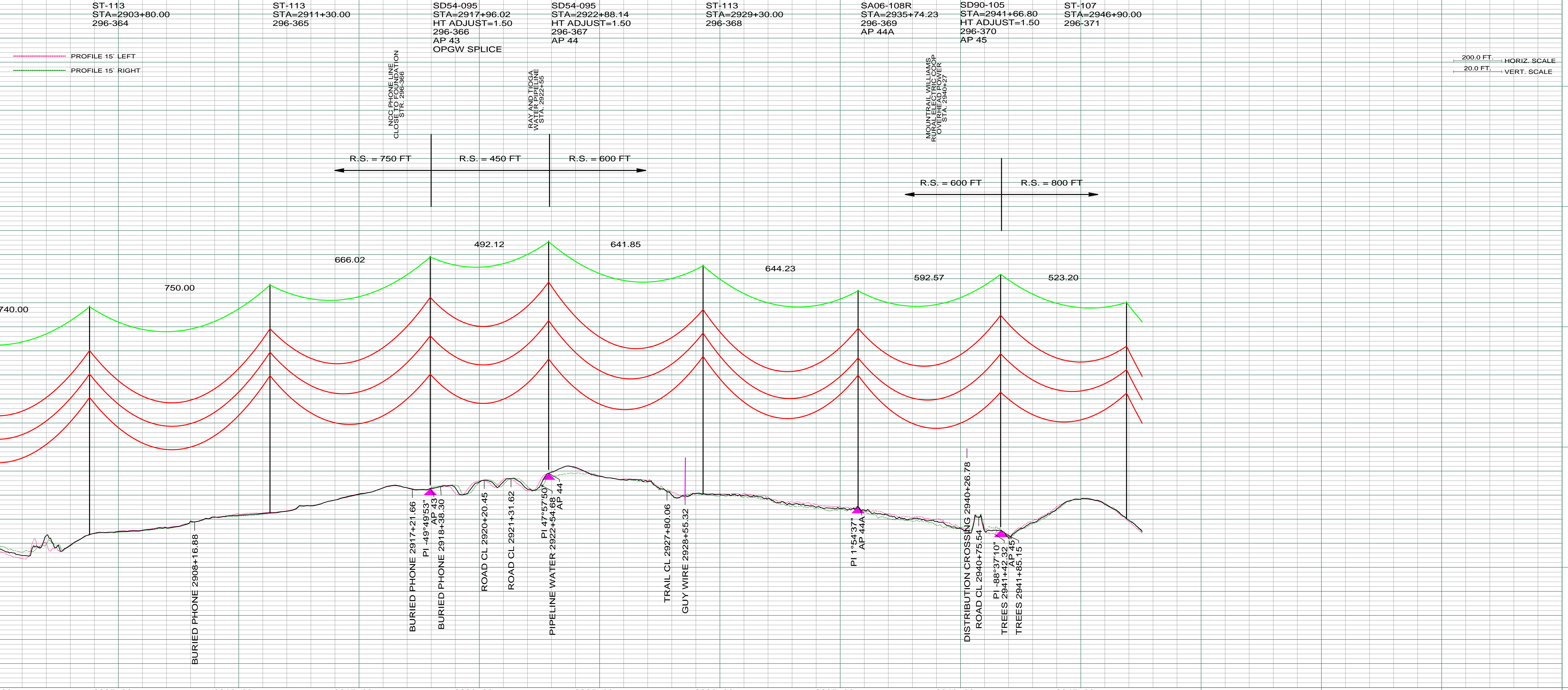
0170  
 STATE OF NORTH DAKOTA  
 PART OF SE 1/4 SEC. 11 T156N R95W  
 PART OF NE 1/4 SEC. 11 T156N R95W  
 CENTERLINE LENGTH 142.16'-26.80 RODS-1.27 ACRES

NE 1/4  
 SEC. 11 T156N R95W  
 WILLIAMS CO., NORTH DAKOTA

0160  
 DAVID & RONDA DAVIDSON  
 SE 1/4 SEC. 11 T156N R95W  
 CENTERLINE LENGTH 1861.09'-  
 112.78 RODS-5.34 ACRES



LIDAR & AERIAL PHOTOGRAPHY  
 JULY 20, 2008  
 FUGRO HORIZONS, INC.



REV	DESCRIPTION	DRWN	DSGN	APPD	DATE	REV	DESCRIPTION	DRWN	DSGN	APPD	DATE
1	ISSUE FOR BID	CDB	CDB	DAM	10/27/09						
2	ISSUED FOR CONSTRUCTION	CDB	CDB	DAM	02/03/10						
3	MODIFIED CROSSING TEXT AND MILE INFORMATION	CDB	CDB	DAM	03/11/10						
4	AS-BUILT	CDB	CDB	DAM	03/07/11						

STATE NAME: NORTH DAKOTA		NAD83 NDSPCS INTL FT NORTH ZONE		DESIGN BY:	DAM/CDB	10/12/09
DESIGN INFORMATION		CONDUCTOR	1272 MCM 45/7 ACSR	DRAWN BY:	CDB	10/12/09
SIZE	STRINGING TENSION	NESC TENSION	DESIGN R.S.	DESIGN CHK:	MBN ENGRG.	01/08/10
OPGW	AC-71/571	2101	5253	DRAFT CHK:		
				APPROVED:	DAM	10/12/09

FACILITY:	TRANSMISSION SYSTEM MAINTENANCE	<b>BASIN ELECTRIC POWER COOPERATIVE</b> 1717 EAST INTERSTATE AVENUE BISMARCK, NORTH DAKOTA PHONE 701-223-0441	
LOCATION UNIT:	296-230KV LINE-WILLISTON SUBSTATION TO TIOGA SUBSTATION		
WILLISTON TO TIOGA 230KV TRANSMISSION LINE			
SCALE:	AS SHOWN		COUNTY NAME:
BASIN DRAWING NO.		REV.	
296-090-T3-056		4	

PLAN AND PROFILE	
MILE 54 & 55	