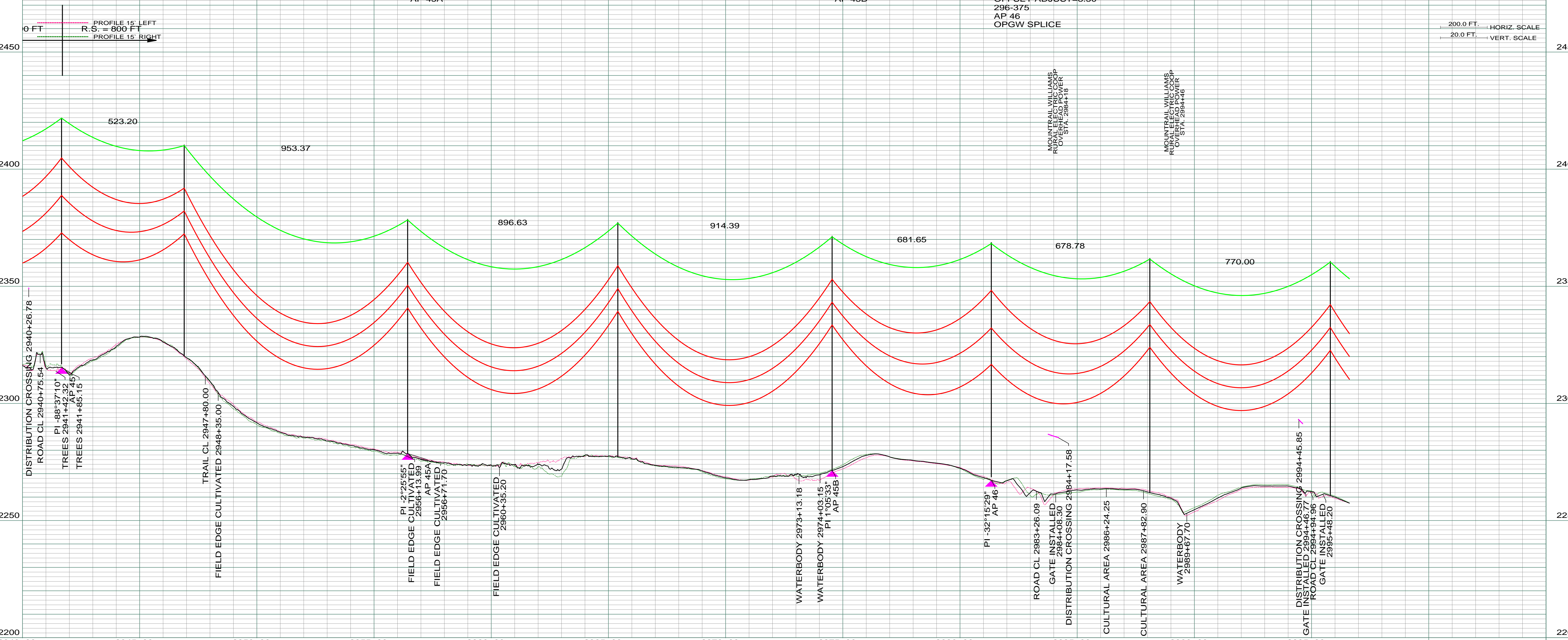


ST-107 STA=2946+90.00 296-371	SLT-118 STA=2956+43.37 296-372 AP 45A	ST-118 STA=2965+40.00 296-373	ST-118 STA=2974+54.39 296-374 AP 45B	SA38D-100 STA=2981+33.63 HT ADJUST=1.50 OFFSET ADJUST=8.50 296-375 AP 46 OPGW SPLICE	ST-118 STA=2988+10.00 296-376	ST-118 STA=2995+80.00 296-377
-------------------------------------	--	-------------------------------------	---	--	-------------------------------------	-------------------------------------



REV	DESCRIPTION	DRWN	DSGN	APPD	DATE	REV	DESCRIPTION	DRWN	DSGN	APPD	DATE
1	ISSUE FOR BID	CDB	CDB	DAM	10/27/09						
2	ISSUED FOR CONSTRUCTION	CDB	CDB	DAM	02/03/10						
3	MODIFIED CROSSING TEXT AND MILE INFORMATION	CDB	CDB	DAM	03/11/10						
4	AS-BUILT	CDB	CDB	DAM	03/07/11						

STATE NAME: NORTH DAKOTA		NAD83 NDSPCS INTL FT NORTH ZONE			
DESIGN INFORMATION					
DESIGN BY:	DAM/CDB	10/12/09			
DRAWN BY:	CDB	10/12/09			
DESIGN CHK:	MBN ENGRG.	01/08/10			
DRAFT CHK:					
APPROVED:	DAM	10/12/09			
CONDUCTOR	1272 MCM 45/7 ACSR	6501	12617	800	832
OPGW	AC-71/571	2285	5932	800	841

FACILITY: TRANSMISSION SYSTEM MAINTENANCE
 LOCATION UNIT: 296-230KV LINE-WILLISTON SUBSTATION TO TIOGA SUBSTATION
 WILLISTON TO TIOGA 230KV TRANSMISSION LINE
 PLAN AND PROFILE
 MILE 55 & 56

SCALE: AS SHOWN
 COUNTY NAME: WILLIAMS
 BASIN DRAWING NO. 296-090-T3-057
 REV. 4

BASIN ELECTRIC POWER COOPERATIVE
 1717 EAST INTERSTATE AVENUE
 BISMARCK, NORTH DAKOTA
 PHONE 701-223-0441