

SE 1/4
SEC 2 T156N R95W
WILLIAMS CO., NORTH DAKOTA

0115
JOANNA HERSEL-LIFE ESTATE, ETAL
W1/2SE 1/4 SEC. 2-T156N-R95W
CENTERLINE LENGTH 1825.81'
110.66 RODS-5.24 ACRES

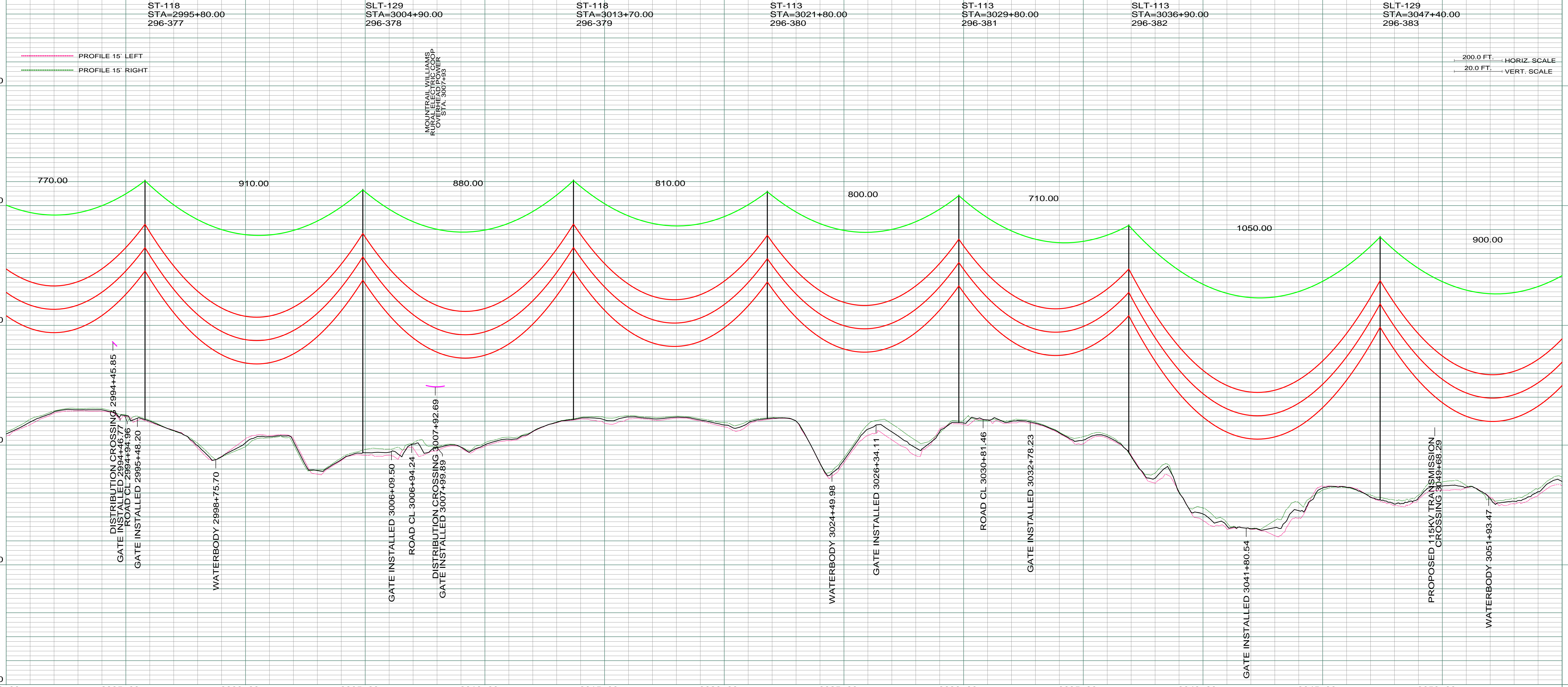
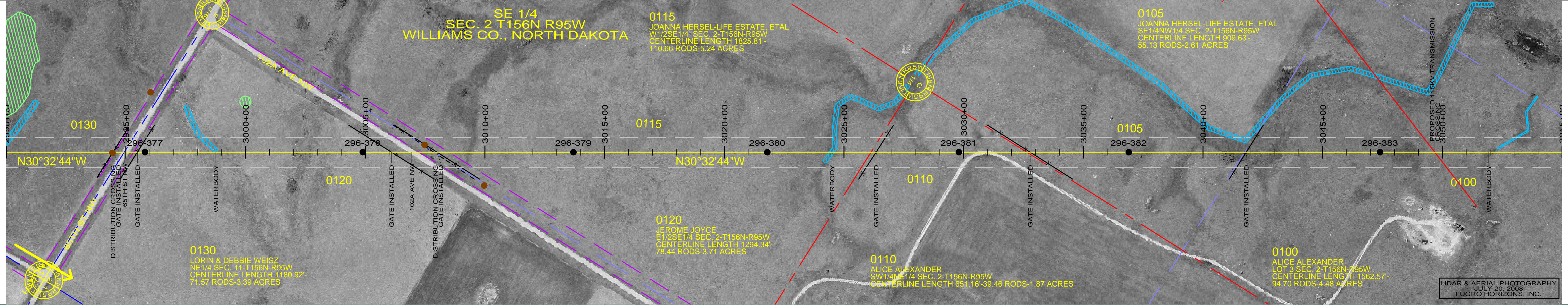
0105
JOANNA HERSEL-LIFE ESTATE, ETAL
SE 1/4NW 1/4 SEC. 2-T156N-R95W
CENTERLINE LENGTH 909.63'
55.13 RODS-2.61 ACRES

0130
LORIN & DEBBIE WEISZ
NE 1/4 SEC. 11-T156N-R95W
CENTERLINE LENGTH 1180.82'
71.57 RODS-3.39 ACRES

0120
JEROME JOYCE
E1/2SE 1/4 SEC. 2-T156N-R95W
CENTERLINE LENGTH 1294.34'
78.44 RODS-3.71 ACRES

0110
ALICE ALEXANDER
SW 1/4NE 1/4 SEC. 2-T156N-R95W
CENTERLINE LENGTH 651.16'-39.46 RODS-1.87 ACRES

0100
ALICE ALEXANDER
LOT 3 SEC. 2-T156N-R95W
CENTERLINE LENGTH 1562.57'
94.70 RODS-4.48 ACRES



REV	DESCRIPTION	DRWN	DSGN	APPD	DATE
1	ISSUE FOR BID	CDB	CDB	DAM	10/27/09
2	ISSUED FOR CONSTRUCTION	CDB	CDB	DAM	02/03/10
3	MODIFIED CROSSING TEXT AND MILE INFORMATION	CDB	CDB	DAM	03/11/10
4	AS-BUILT	CDB	CDB	DAM	03/07/11

REV	DESCRIPTION	DRWN	DSGN	APPD	DATE
1	ISSUE FOR BID	CDB	CDB	DAM	10/27/09
2	ISSUED FOR CONSTRUCTION	CDB	CDB	DAM	02/03/10
3	MODIFIED CROSSING TEXT AND MILE INFORMATION	CDB	CDB	DAM	03/11/10
4	AS-BUILT	CDB	CDB	DAM	03/07/11

DESIGN INFORMATION		DESIGN BY:		DATE	
STATE NAME:	NORTH DAKOTA	DAM/CDB		10/12/09	
NAD83 NDSPCS INTL FT NORTH ZONE		DRAWN BY:		10/12/09	
CONDUCTOR	1272 MCM 45/7 ACSR	DESIGN CHK:		01/08/10	
SIZE	6501	DRAFT CHK:			
STRINGING TENSION	12617	APPROVED:		10/12/09	
NESC TENSION	800				
DESIGN R.S.	832				
ACTUAL R.S.	849				
OPGW	AC-71/571				
	2281				
	6035				
	850				

FACILITY: TRANSMISSION SYSTEM MAINTENANCE		BASIN ELECTRIC POWER COOPERATIVE 1717 EAST INTERSTATE AVENUE BISMARCK, NORTH DAKOTA PHONE 701-223-0441
LOCATION UNIT: 296-230KV LINE-WILLISTON SUBSTATION TO TIOGA SUBSTATION		
WILLISTON TO TIOGA 230KV TRANSMISSION LINE		SCALE: AS SHOWN
MILE 56 & 57		COUNTY NAME: WILLIAMS
		BASIN DRAWING NO. 296-090-T3-058
		REV. 4