



Legend

- Proposed Route
- Proposed Bison Switching Station Site
- Preliminary MN Alignment
- MN Permitted Route
- North Dakota Diversion Project Alignments**
 - DEIS Diversion Alignment
 - LPP Diversion Alignment
 - Sponsor Proposed Diversion Alignment
 - Diversion Alignment Tieback Levee
- Substations**
- Existing Transmission Lines**
- Voltage (kV)

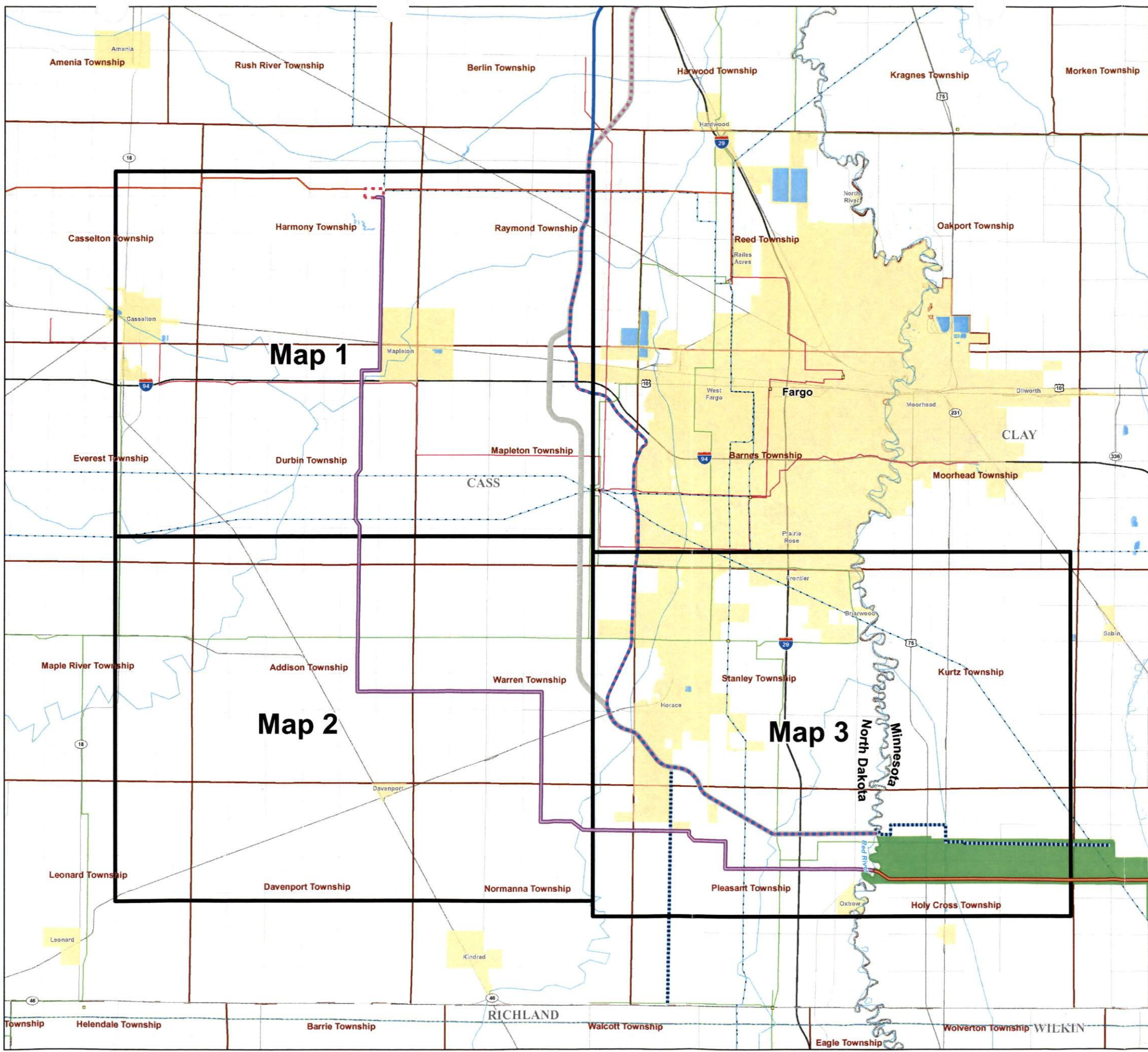
| | | | |
|--|-----|--|-----|
| | 400 | | 230 |
| | 345 | | 115 |
| | 250 | | 69 |
- Roads**
 - Interstate
 - US Highway
 - State Highway
 - County Road / Secondary Road
 - Railroad
 - River / Stream
 - Lake
 - State Boundary
 - County Boundary
 - Municipal Boundary
 - Township Boundary



**FARGO TO ST. CLOUD
345 kV TRANSMISSION
LINE PROJECT
Proposed Alignment**

Date: 01/18/12

Drawn by: MLTEICHERT



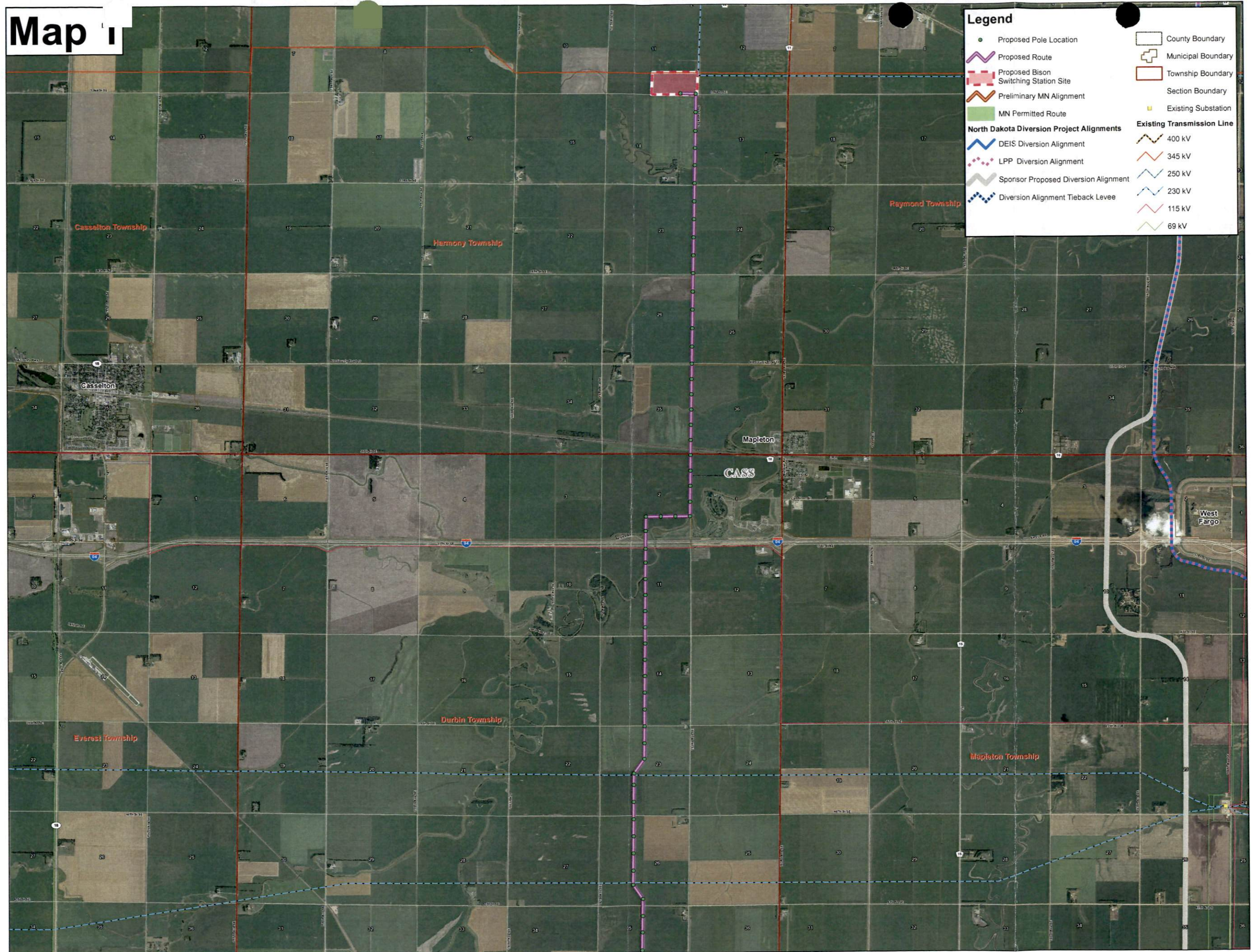
Map 1

Map 2

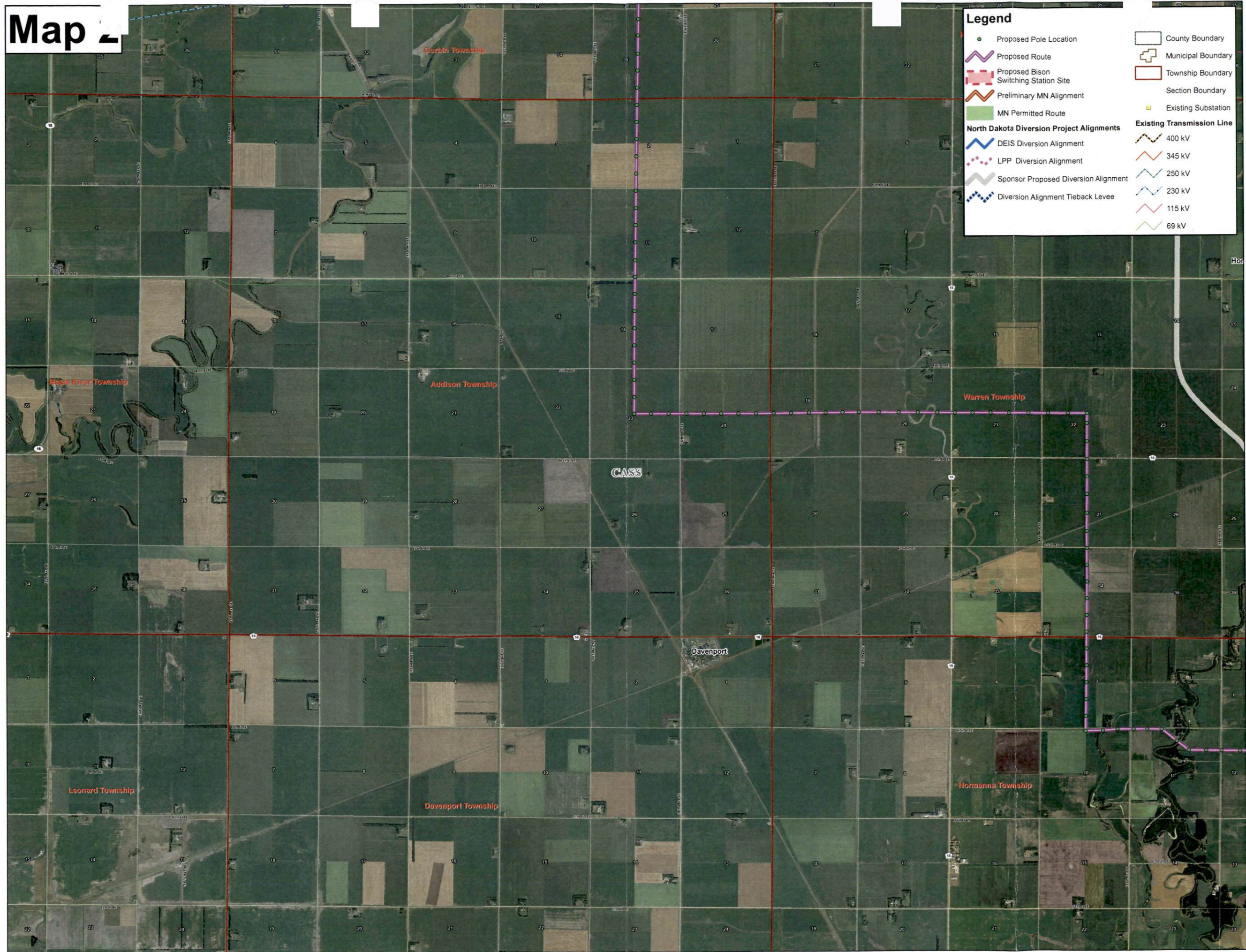
Map 3



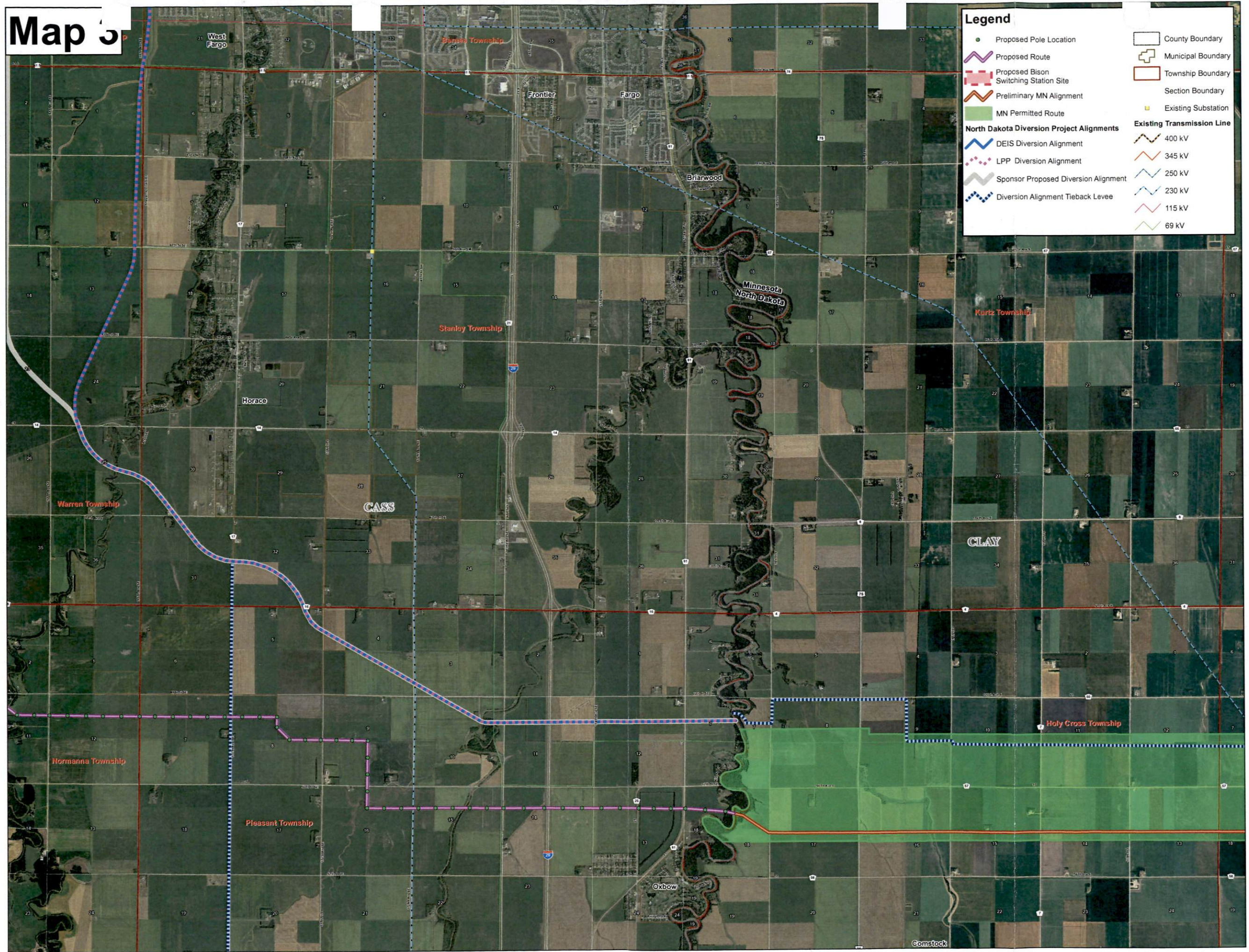
Map 1



Map



Map 3



Legend

- Proposed Pole Location
- Proposed Route
- Proposed Bison Switching Station Site
- Preliminary MN Alignment
- MN Permitted Route
- North Dakota Diversion Project Alignments
 - DEIS Diversion Alignment
 - LPP Diversion Alignment
 - Sponsor Proposed Diversion Alignment
 - Diversion Alignment Tieback Levee
- County Boundary
- ⊕ Municipal Boundary
- Township Boundary
- Section Boundary
- Existing Substation
- Existing Transmission Line
 - 400 kV
 - 345 kV
 - 250 kV
 - 230 kV
 - 115 kV
 - 69 kV