

Hamre, John G.

From: Lein, Jerry R.
Sent: Monday, September 09, 2013 9:22 AM
To: Hillstrom, Thomas G (Thomas.Hillstrom@xcelenergy.com)
Cc: Hamre, John G.; -Grp-PSC Commissioners; -Grp-PSC Legal; -Grp-PSC Public Utilities; MArmstrong@smithbakke.com
Subject: FW: CapX Final Pole Locations
Attachments: _CapxF_ND_Structure_Changes (4).pdf; ND Structures Moved.xlsx

Tom,

Please consider this e-mail to be staff approval of the attached structure location changes.

Thank you.

Jerry Lein
701 328-1035

From: Lein, Jerry R.
Sent: Thursday, August 29, 2013 1:24 PM
To: -Grp-PSC Commissioners; -Grp-PSC Public Utilities; -Grp-PSC Legal
Cc: MArmstrong@smithbakke.com
Subject: FW: CapX Final Pole Locations

NSP requests approval of several transmission line structure location changes along its Cap-X 345 kV Fargo transmission line project, Case No. PU-07-759, as described in the attached map and table. The largest move is a distance of 404 feet and all are in line with the existing route. If anyone has any thoughts or concerns with any of these structure movements, please let me know by noon on Tuesday, September 3rd, otherwise I will plan on issuing staff approval at that time. Thanks.

From: Hillstrom, Thomas G [<mailto:Thomas.Hillstrom@xcelenergy.com>]
Sent: Wednesday, August 21, 2013 2:57 PM
To: Lein, Jerry R.
Subject: CapX Final Pole Locations

Jerry,

Attached are maps of final pole locations and a table providing distance moved and reason for move. The table excludes poles moved in the five corridor modification areas.

Please let me know if you need any other information.

Thank You

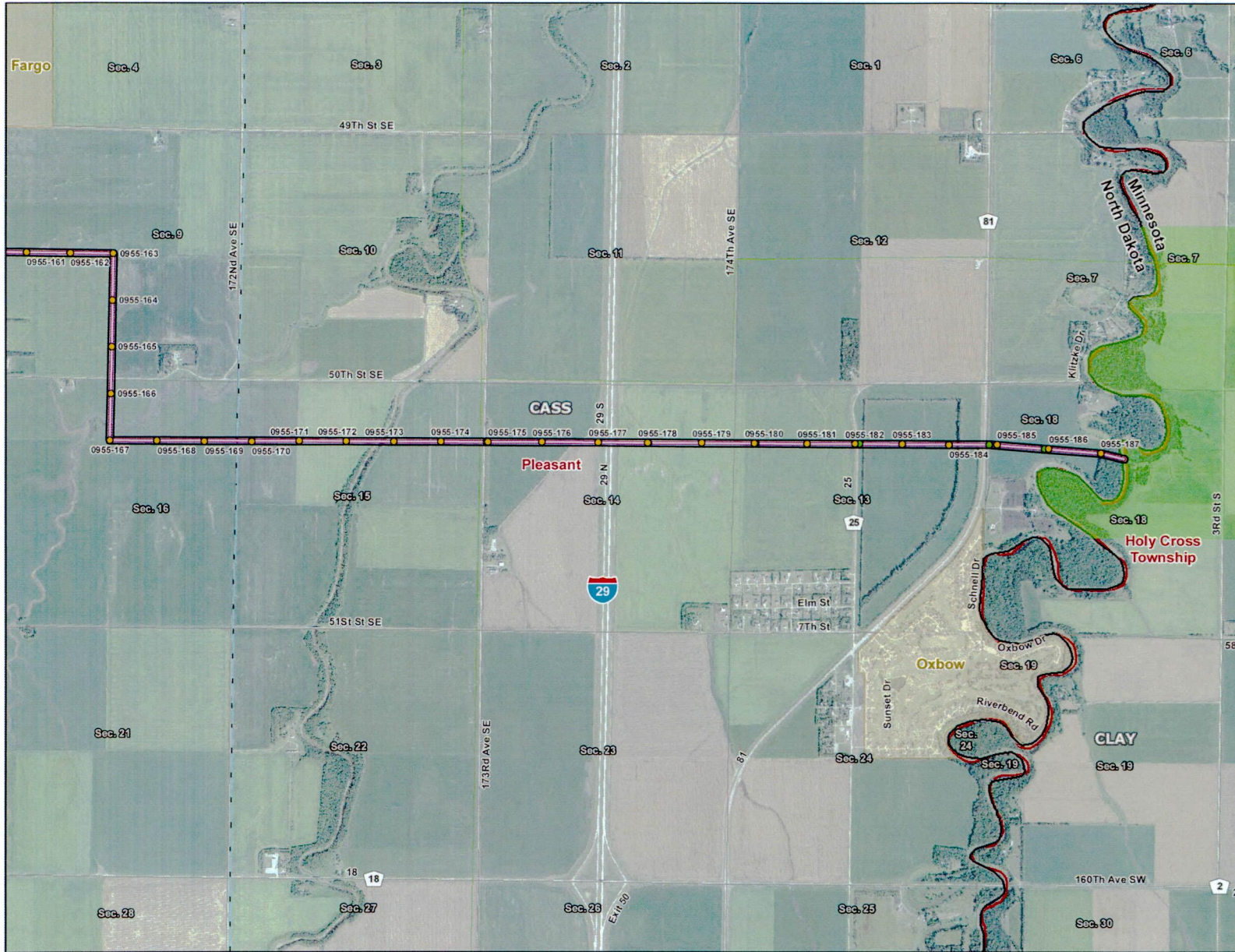
Tom Hillstrom
Xcel Energy | Responsible By Nature
Permitting Manager
414 Nicollet Mall, MP-7B Minneapolis, MN 55401
P: 612 330 5835 C: 612 584 8783
E: thomas.hillstrom@xcelenergy.com

166 PU-07-759 Filed: 9/9/2013 Pages: 10
Staff approval of proposed transmission line structure location changes

Public Service Commission

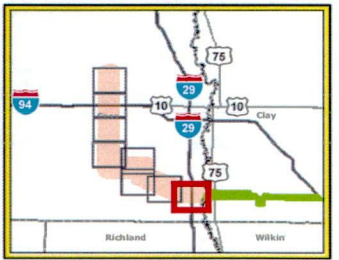
Jerry Lein

Structure Number	Distanced Moved (Ft)	Reason For Move
1	245	Finalization of Bison Substation
31	56	Moved south per landowner request
47	141	Moved to optimize the line/ final design
48	78	Moved to optimize the line/ final design
52	60	Moved to optimize the line/ final design
53	90	Moved to optimize the line/ final design
54	120	Moved to optimize the line/ final design
55	145	Moved to optimize the line/ final design
58	75	Moved to optimize the line/ final design
59	121	Moved south closer to road R/W per landowner preferer
60	51	Moved west closer to road R/W per landowner preferer
68	57	Moved west closer to road R/W per landowner preferer
102	98	Moved to optimize the line/ final design
103	51	Moved to optimize the line/ final design
108	57	Moved to optimize the line/ final design
109	114	Moved to optimize the line/ final design
110	125	Moved to optimize the line/ final design
111	81	Moved to optimize the line/ final design
115	404	Moved to optimize the line/ final design
116	336	Moved to optimize the line/ final design
117	274	Moved out of road R/W. Adjusted and optimized surour
118	235	Moved to optimize the line/ final design
119	184	Moved to optimize the line/ final design
120	67	Moved to optimize the line/ final design
182	98	Moved east of of road R/W.
185	165	Moved to optimize structures and line crossing at Red R
186	90	Moved to optimize structures and line crossing at Red R



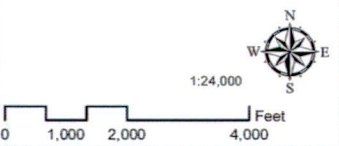
CapX2020

Delivering electricity you can rely on



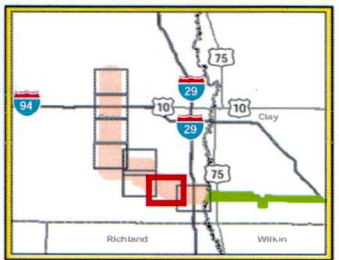
- ### Legend
- Final Structure Locations
 - PUC Approved Structure
 - PUC Approved Centerline
 - PUC Approved Right-of-Way
 - MN Permitted Route
 - Municipal Boundary
 - Township Boundary
 - Section Line
 - Existing Substation

- ### Existing Transmission Line (kV)
- 345
 - 250
 - 230
 - 115
 - 69



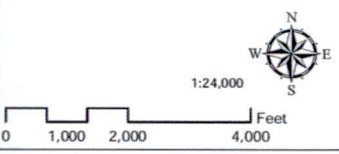
Structure Locations that have Moved

Fargo to St. Cloud
345 kV Transmission Line Project

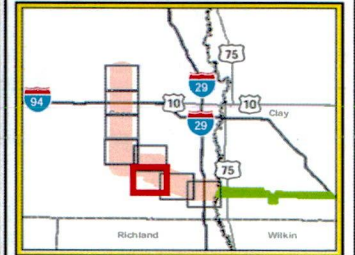
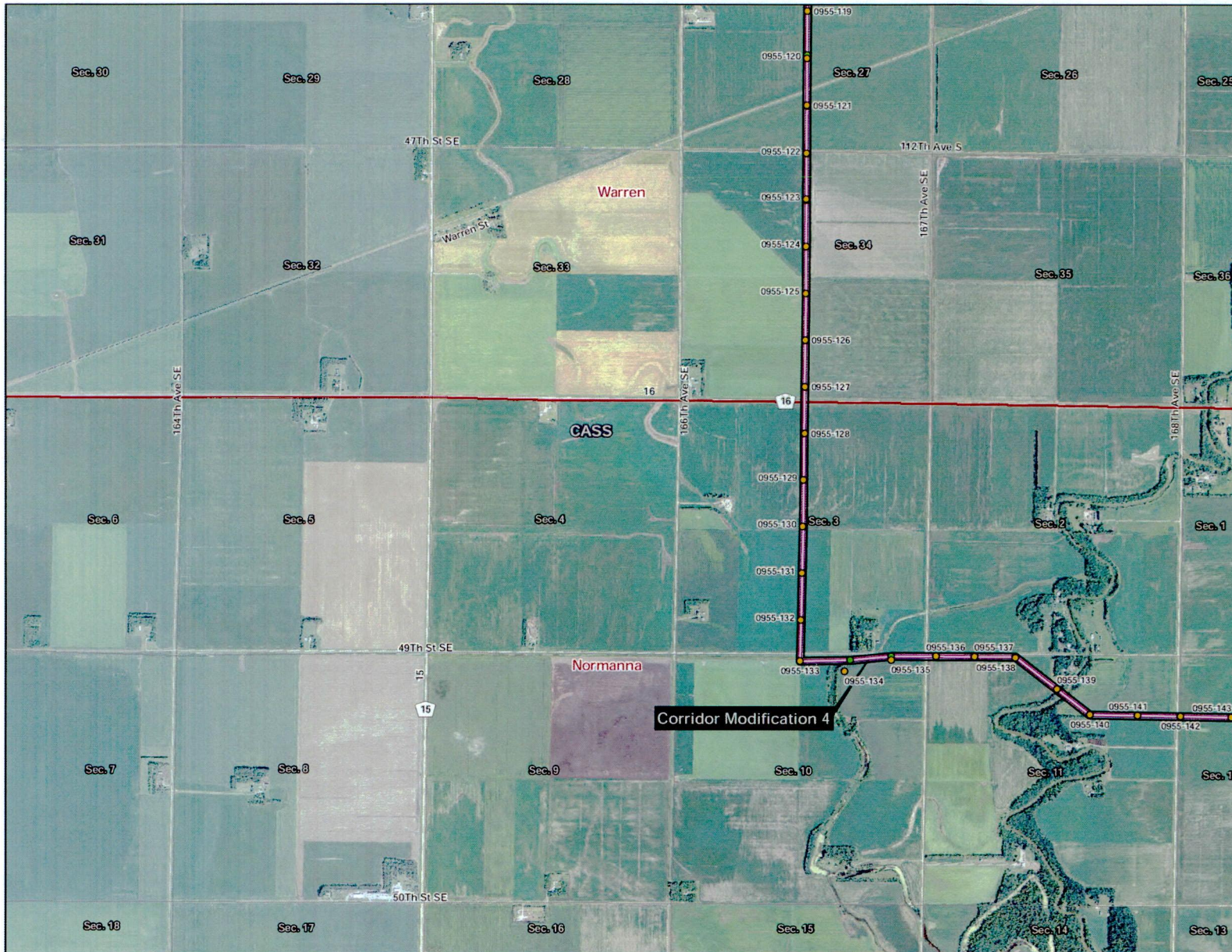


- Legend**
- Final Structure Locations
 - PUC Approved Structure
 - PUC Approved Centerline
 - PUC Approved Right-of-Way
 - MN Permitted Route
 - Municipal Boundary
 - Township Boundary
 - Section Line
 - Existing Substation

- Existing Transmission Line (kV)**
- 345
 - 250
 - 230
 - 115
 - 69



Structure Locations that have Moved
 Fargo to St. Cloud
 345 kV Transmission Line Project



Legend

- Final Structure Locations
- PUC Approved Structure
- PUC Approved Centerline
- PUC Approved Right-of-Way
- MN Permitted Route
- Municipal Boundary
- Township Boundary
- Section Line
- Existing Substation

Existing Transmission Line (kV)

- 345
- 250
- 230
- 115
- 69



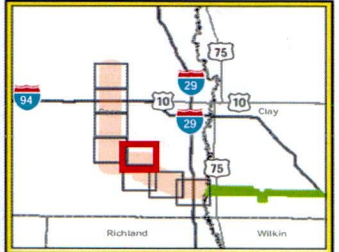
1:24,000

0 1,000 2,000 4,000 Feet

Structure Locations that have Moved
 Fargo to St. Cloud
 345 kV Transmission Line Project

XCW0122285 CapX Monticello to Fargo(GS)
 Fargo0103201307WD_Plate_Changes1
 Chief_Alt_Structure_Changes.mxd

DRAWN BY: MLTEICHERT



Legend

- Final Structure Locations
- PUC Approved Structure
- ~ PUC Approved Centerline
- ~ PUC Approved Right-of-Way
- ~ MN Permitted Route
- Municipal Boundary
- Township Boundary
- Section Line
- Existing Substation

- Existing Transmission Line (kV)
- ~ 345
 - ~ 250
 - ~ 230
 - ~ 115
 - ~ 69

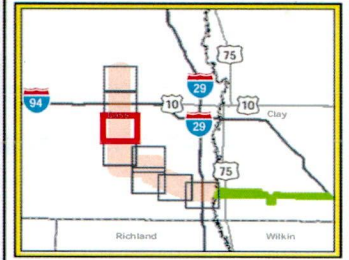
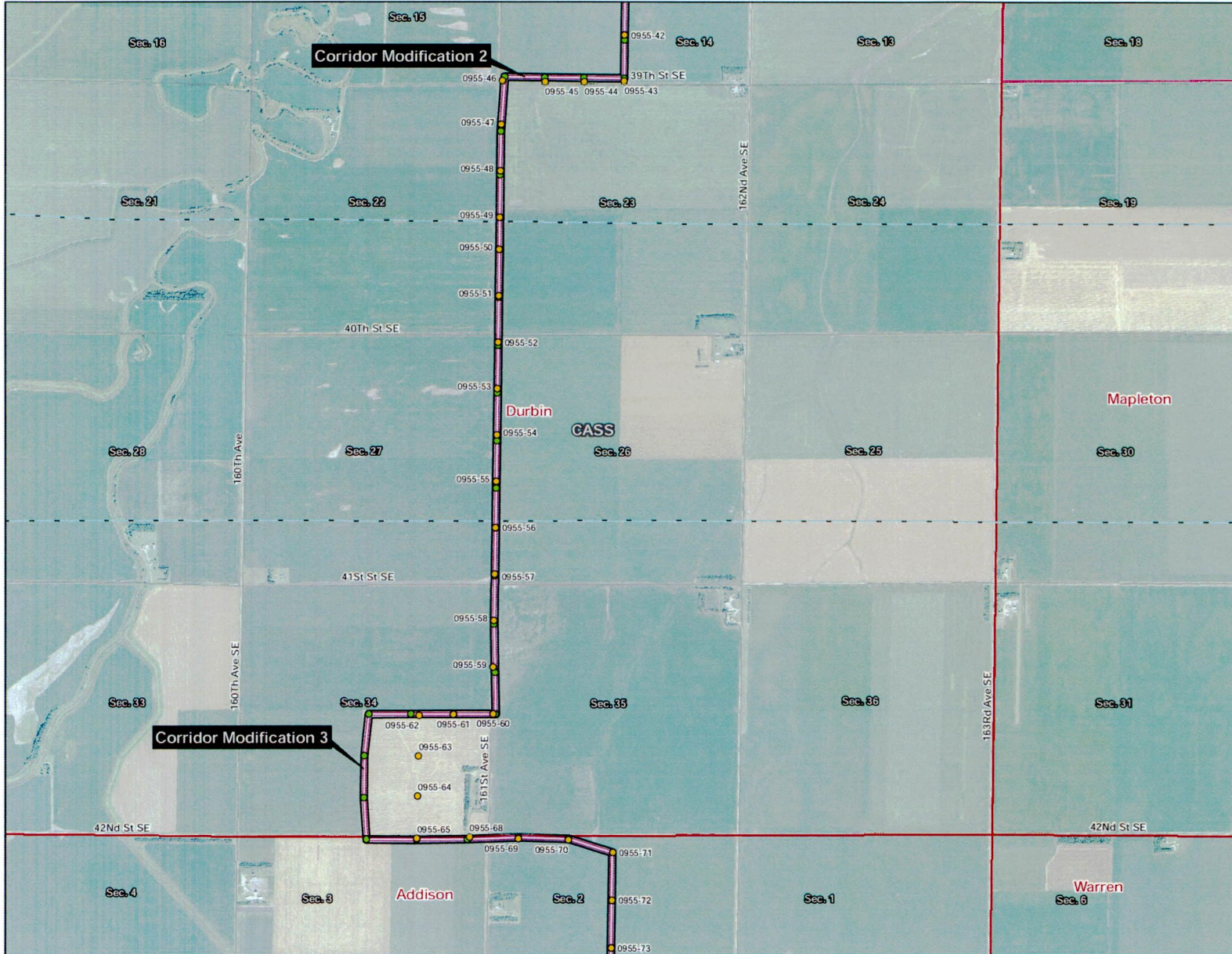


1:24,000



Structure Locations that have Moved
Fargo to St. Cloud
345 kV Transmission Line Project

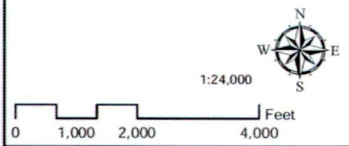
DRAWN BY: MLTEICHERT



Legend

- Final Structure Locations
- PUC Approved Structure
- PUC Approved Centerline
- PUC Approved Right-of-Way
- MN Permitted Route
- + Municipal Boundary
- Township Boundary
- Section Line
- Existing Substation

- Existing Transmission Line (kV)
- 345
 - 250
 - 230
 - 115
 - 69

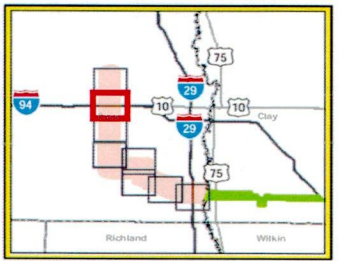
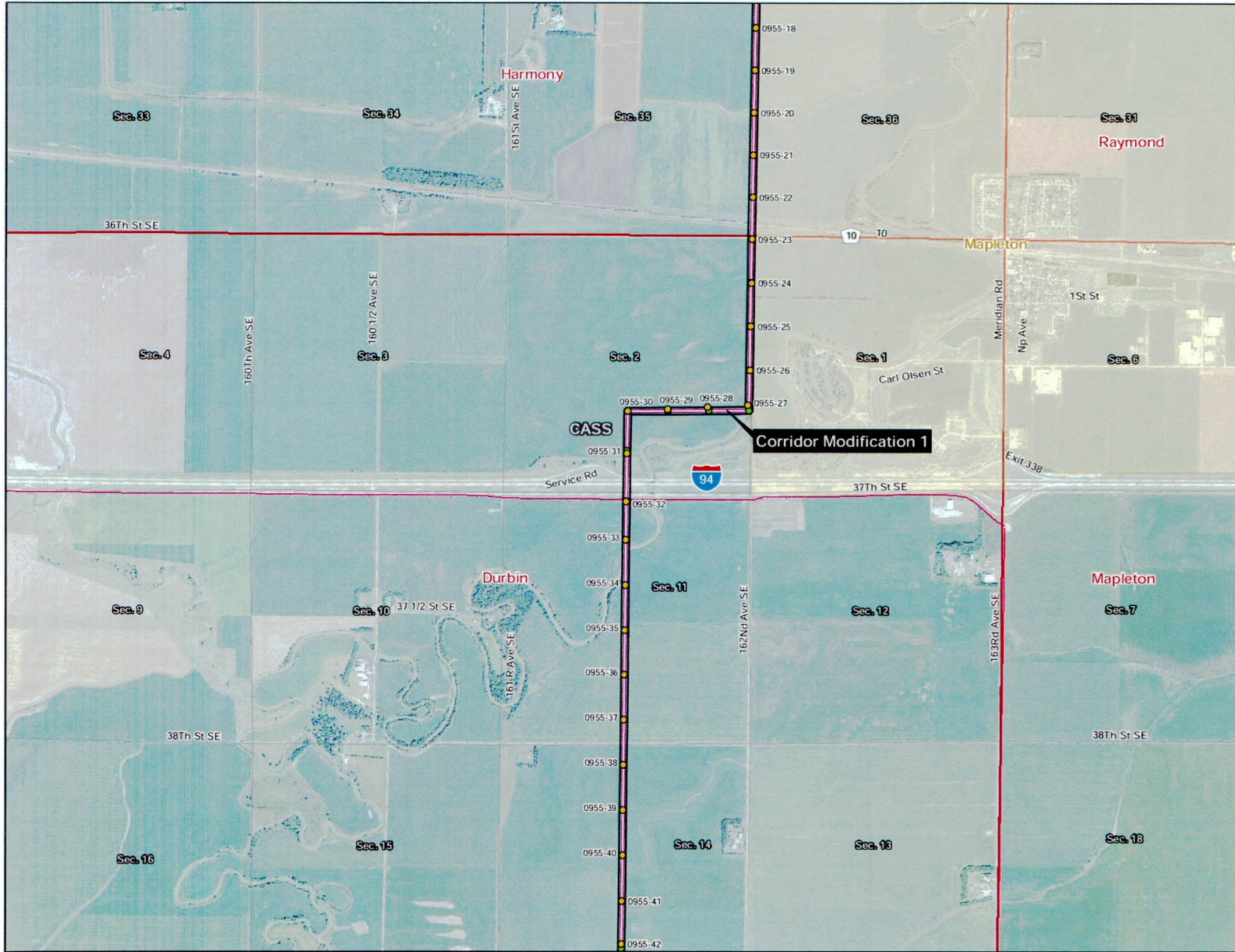


Structure Locations that have Moved
 Fargo to St. Cloud
 345 kV Transmission Line Project

DRAWN BY: MLTEICHERT

6

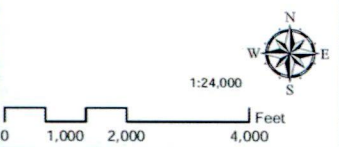
\\sv0122285.CapX_Monticello to Fargo(GIS)
 Fargo\GIS\201307\GIS_Plate_Changes\
 _CapxF_ID_Structure_Changes.mxd



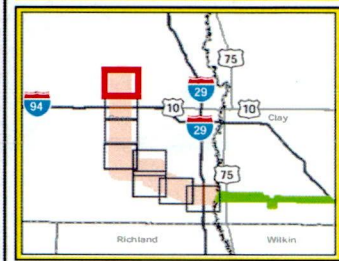
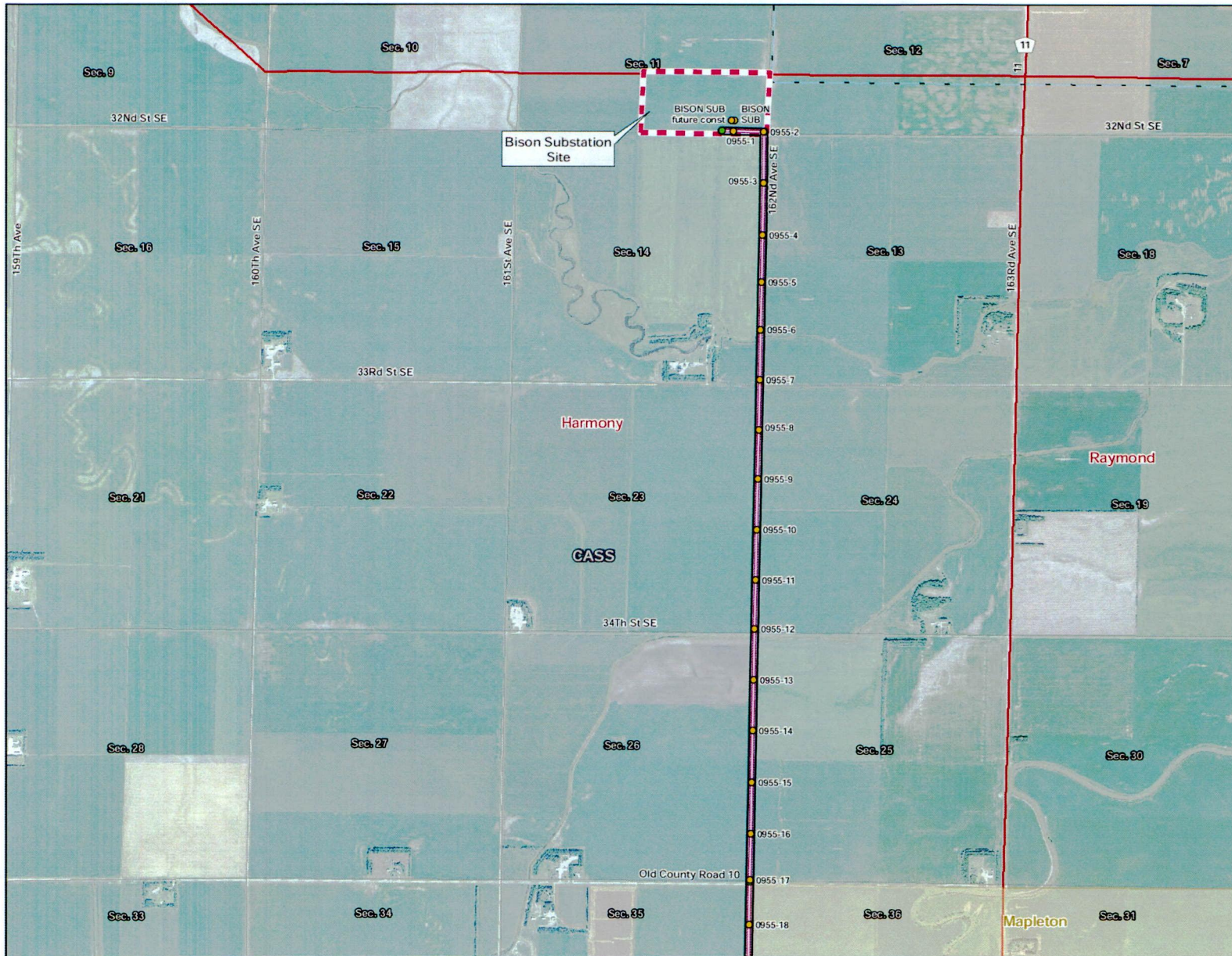
Legend

- Final Structure Locations
- PUC Approved Structure
- ~ PUC Approved Centerline
- ~ PUC Approved Right-of-Way
- ~ MN Permitted Route
- + Municipal Boundary
- Township Boundary
- Section Line
- Existing Substation

- Existing Transmission Line (kV)
- ~ 345
 - ~ 250
 - ~ 230
 - ~ 115
 - ~ 69



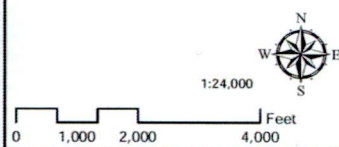
Structure Locations that have Moved
 Fargo to St. Cloud
 345 kV Transmission Line Project



Legend

- Final Structure Locations
- PUC Approved Structure
- ~ PUC Approved Centerline
- ~ PUC Approved Right-of-Way
- ~ MN Permitted Route
- ⊕ Municipal Boundary
- ▭ Township Boundary
- ▭ Section Line
- Existing Substation

- Existing Transmission Line (kV)
- 345
 - 250
 - 230
 - 115
 - 69



Structure Locations that have Moved
 Fargo to St. Cloud
 345 kV Transmission Line Project