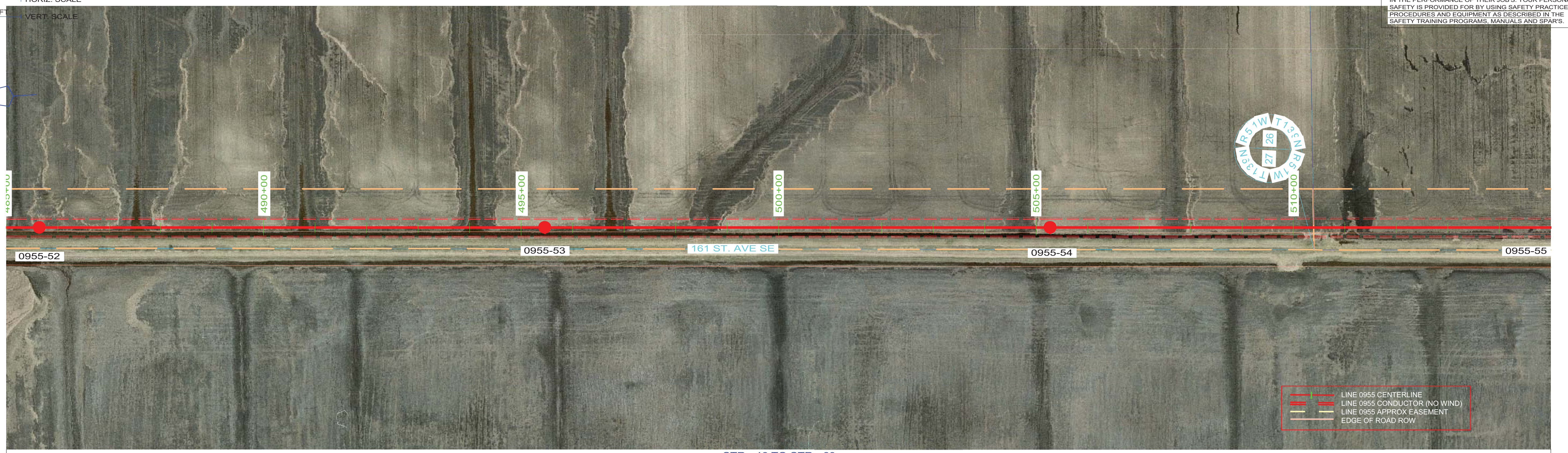


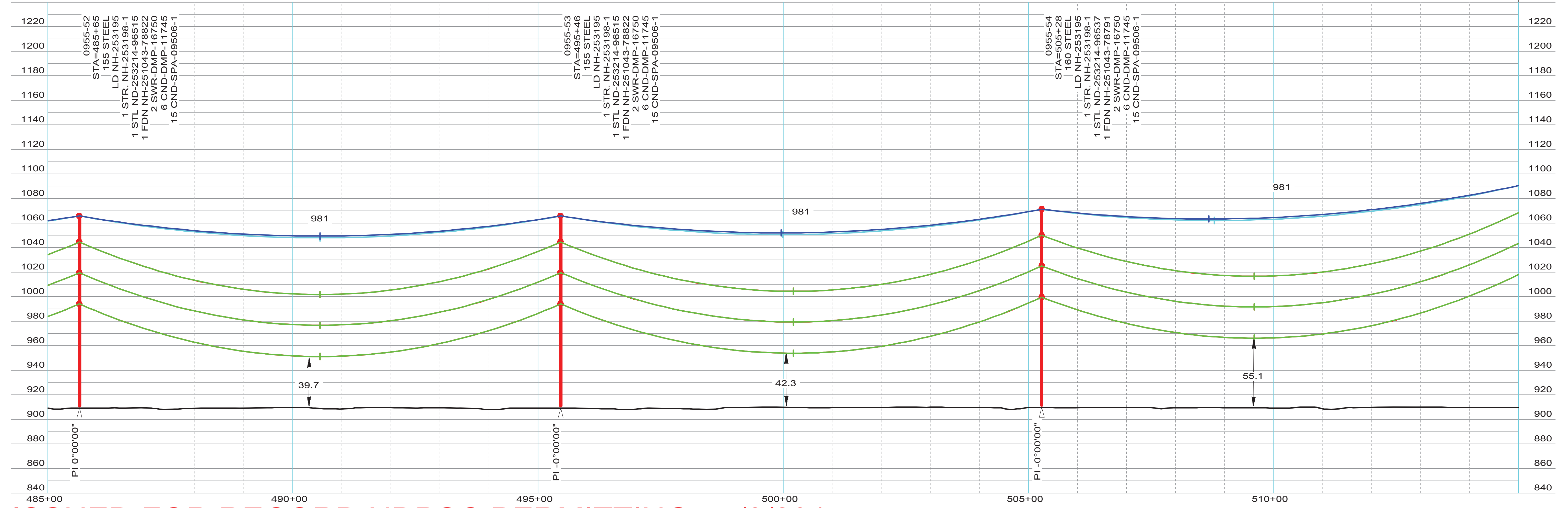
THIS MAP/DOCUMENT IS A TOOL TO ASSIST EMPLOYEES IN THE PERFORMANCE OF THEIR JOB'S. YOUR PERSONAL SAFETY IS PROVIDED FOR BY USING SAFETY PRACTICES, PROCEDURES AND EQUIPMENT AS DESCRIBED IN THE SAFETY TRAINING PROGRAMS, MANUALS AND SPARS.

100.0 FT. HORIZ. SCALE
40.0 FT. VERT. SCALE

N



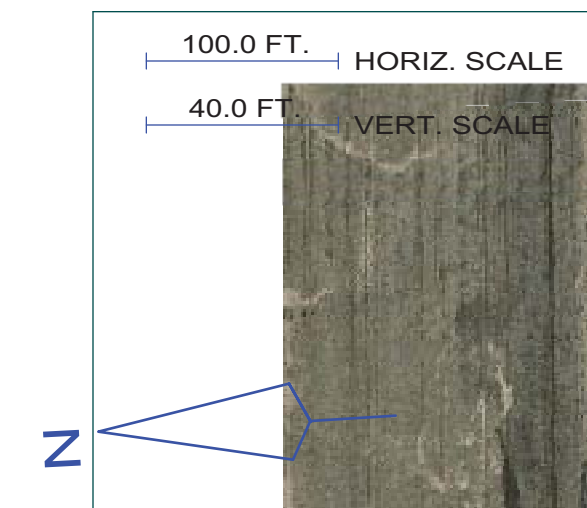
STR - 46 TO STR - 60
 COND: 6- 954 KCMIL ACSS/TW 20/7 @ 10060# D.T., RS = 964FT (EAST SIDE)
 OPGW: 1- AC-26/57/635-48 FIBER @ 7100# D.T., RS = 964FT (EAST SIDE)
 COND SAG TABLE NH-257382, OPGW SHIELD SAG TABLE NH-257383
 COND SHOWN AT 392 DEG. FINAL, SHIELD(S) SHOWN AT -20 DEG. INITIAL



ISSUED FOR RECORD NDPSC PERMITTING - 5/8/2015

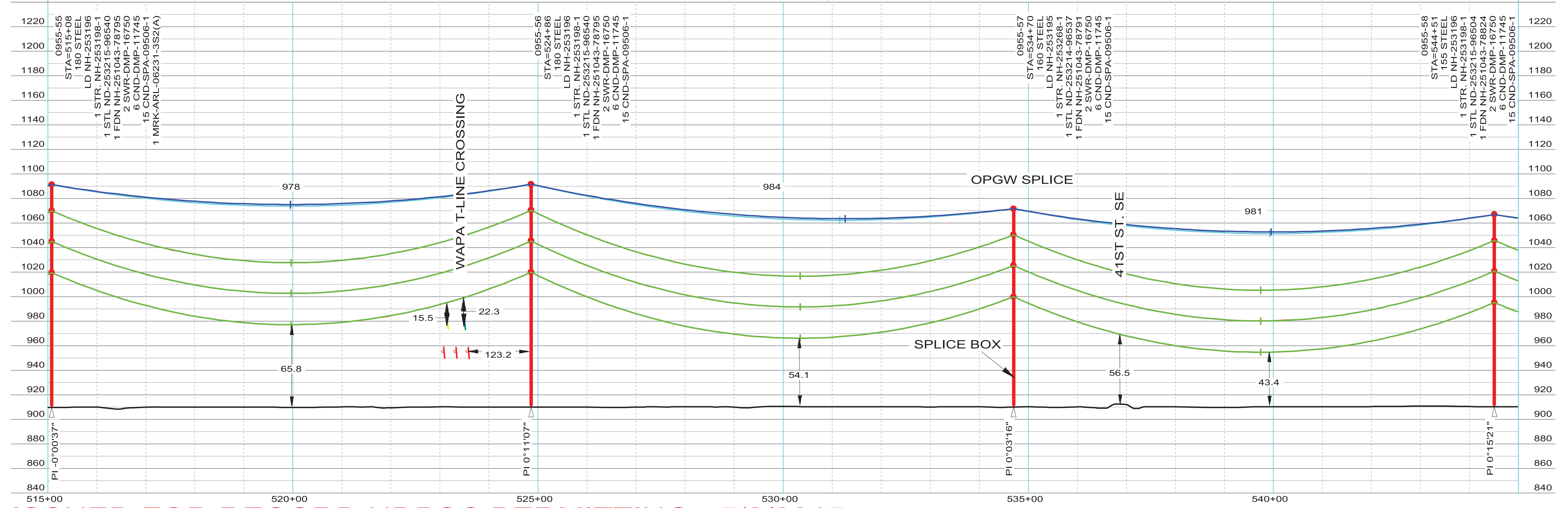
INTERNAL INFORMATION: DO NOT COPY OR DISTRIBUTE TO OTHERS WITHOUT EXPRESS WRITTEN CONSENT FROM XCEL ENERGY.

THIS MAP/DOCUMENT IS A TOOL TO ASSIST EMPLOYEES IN THE PERFORMANCE OF THEIR JOB'S. YOUR PERSONAL SAFETY IS PROVIDED FOR BY USING SAFETY PRACTICES, PROCEDURES AND EQUIPMENT AS DESCRIBED IN THE SAFETY TRAINING PROGRAMS, MANUALS AND SPARS.



LINE 0955 CENTERLINE
LINE 0955 CONDUCTOR (NO WIND)
LINE 0955 APPROX EASEMENT
EDGE OF ROAD ROW

STR - 46 TO STR - 60
COND: 6- 954 KCMIL ACSS/TW 20/7 @ 10060# D.T., RS = 964FT (EAST SIDE)
OPGW: 1- AC-26/57/635-48 FIBER @ 7100# D.T., RS = 964FT (EAST SIDE)
COND SAG TABLE NH-257382, OPGW SHIELD SAG TABLE NH-257383
COND SHOWN AT 392 DEG. FINAL, SHIELD(S) SHOWN AT -20 DEG. INITIAL

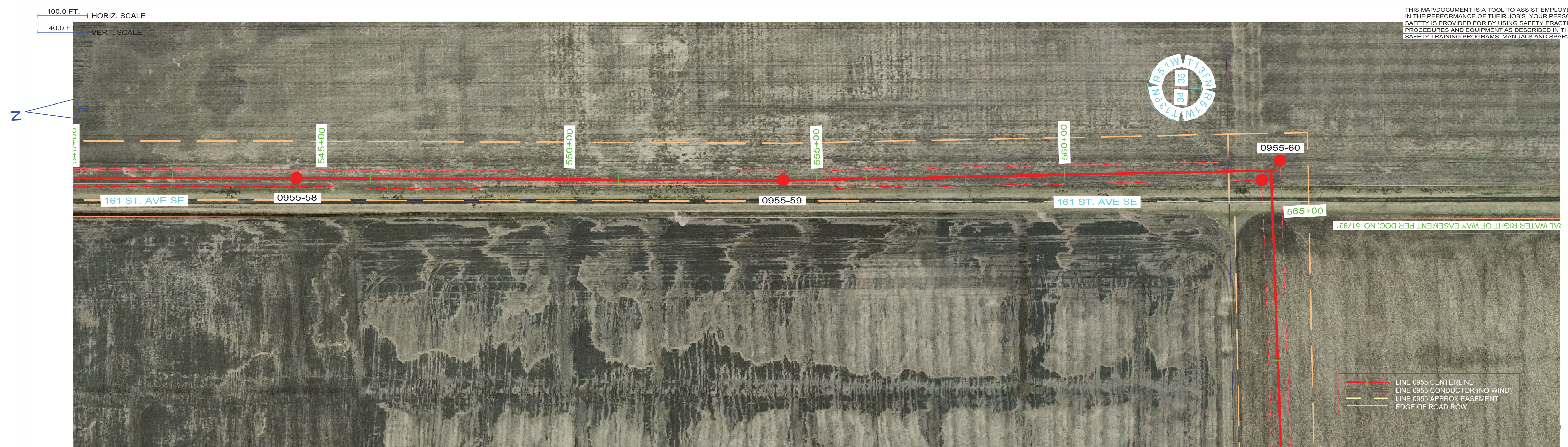


ISSUED FOR RECORD NDPSC PERMITTING - 5/8/2015

INTERNAL INFORMATION: DO NOT COPY OR DISTRIBUTE TO OTHERS WITHOUT EXPRESS WRITTEN CONSENT FROM XCEL ENERGY.

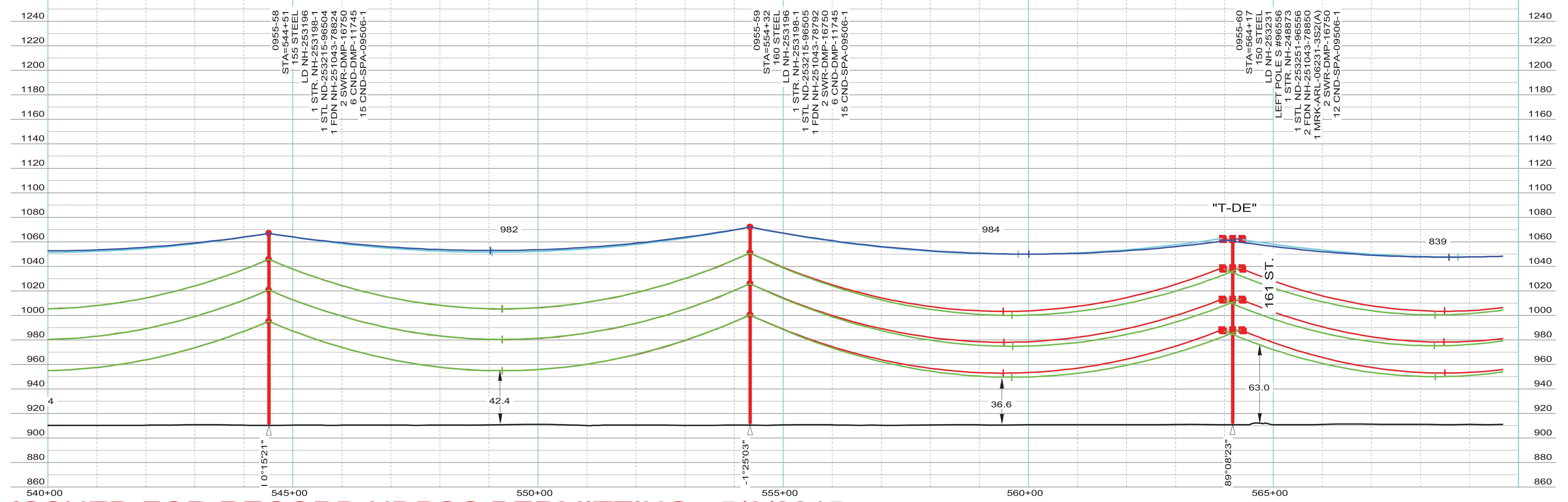
ENGINEERING DEPARTMENT, MINNEAPOLIS, MN	LINE NO. L0955	NH-253190-26	REV 1

THIS MAP/DOCUMENT IS A TOOL TO ASSIST EMPLOYEES IN THE PERFORMANCE OF THEIR JOB'S. YOUR PERSONAL SAFETY IS PROVIDED FOR BY USING SAFETY PRACTICES, PROCEDURES AND EQUIPMENT AS DESCRIBED IN THE SAFETY TRAINING PROGRAMS, MANUALS AND SPARS.



STR - 46 TO STR - 60
 COND: 6- 954 KCMIL ACSS/TW 20/7 @ 10060# D.T., RS = 964FT (EAST SIDE)
 OPGW: 1- AC-26/57/635-48 FIBER @ 7100# D.T., RS = 964FT (EAST SIDE)
 COND SAG TABLE NH-257382, OPGW SHIELD SAG TABLE NH-257383
 COND SHOWN AT 392 DEG. FINAL, SHIELD(S) SHOWN AT -20 DEG. INITIAL

STR - 60 TO STR - 62
 COND: 6- 954 KCMIL ACSS/TW 20/7 @ 9470# D.T., RS = 790FT (SOUTH SIDE)
 OPGW: 1- AC-26/57/635-48 FIBER @ 6565# D.T., RS = 791FT (SOUTH SIDE)
 COND SAG TABLE NH-257382, OPGW SHIELD SAG TABLE NH-257383
 COND SHOWN AT 392 DEG. FINAL, SHIELD(S) SHOWN AT -20 DEG. INITIAL



ISSUED FOR RECORD NDPSC PERMITTING - 5/8/2015

INTERNAL INFORMATION: DO NOT COPY OR DISTRIBUTE TO OTHERS WITHOUT EXPRESS WRITTEN CONSENT FROM XCEL ENERGY.

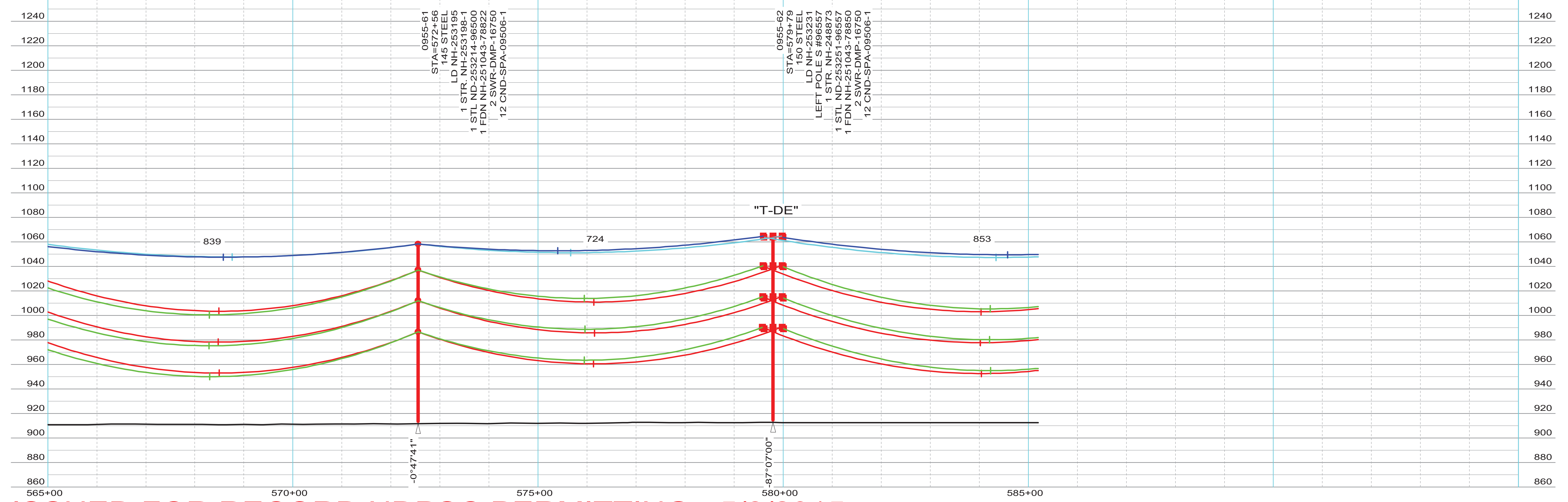
ENGINEERING DEPARTMENT, MINNEAPOLIS, MN	LINE NO. L0955	NH-253190-27	REV 1

THIS MAP/DOCUMENT IS A TOOL TO ASSIST EMPLOYEES IN THE PERFORMANCE OF THEIR JOB'S. YOUR PERSONAL SAFETY IS PROVIDED FOR BY USING SAFETY PRACTICES, PROCEDURES AND EQUIPMENT AS DESCRIBED IN THE SAFETY TRAINING PROGRAMS, MANUALS AND SPARS.



STR - 60 TO STR - 62
 COND: 6- 954 KCMIL ACSS/TW 20/7 @ 9470# D.T., RS = 790FT (SOUTH SIDE)
 OPGW: 1- AC-26/57/635-48 FIBER @ 6565# D.T., RS = 791FT (SOUTH SIDE)
 COND SAG TABLE NH-257382, OPGW SHIELD SAG TABLE NH-257383
 COND SHOWN AT 392 DEG. FINAL, SHIELD(S) SHOWN AT -20 DEG. INITIAL

STR - 62 TO STR - 65
 COND: 6- 954 KCMIL ACSS/TW 20/7 @ 9685# D.T., RS = 850FT (EAST SIDE)
 OPGW: 1- AC-26/57/635-48 FIBER @ 6775# D.T., RS = 851FT (EAST SIDE)
 COND SAG TABLE NH-257382, OPGW SHIELD SAG TABLE NH-257383
 COND SHOWN AT 392 DEG. FINAL, SHIELD(S) SHOWN AT -20 DEG. INITIAL



ISSUED FOR RECORD NDPSC PERMITTING - 5/8/2015

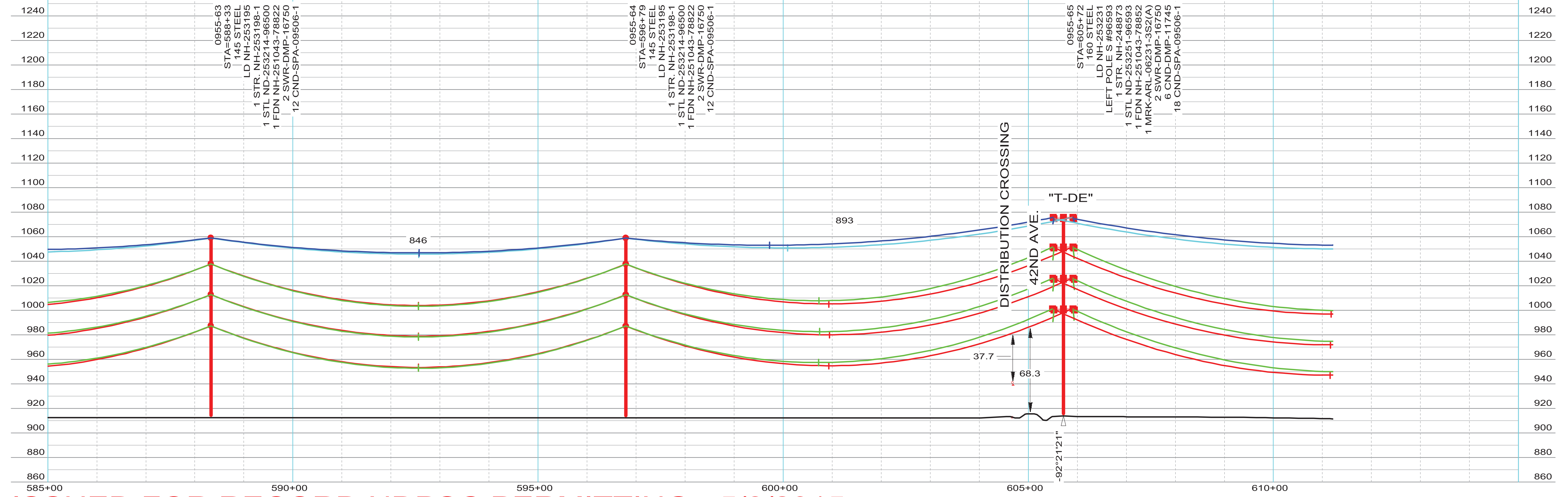
INTERNAL INFORMATION: DO NOT COPY OR DISTRIBUTE TO OTHERS WITHOUT EXPRESS WRITTEN CONSENT FROM XCEL ENERGY.

THIS MAP/DOCUMENT IS A TOOL TO ASSIST EMPLOYEES IN THE PERFORMANCE OF THEIR JOB'S. YOUR PERSONAL SAFETY IS PROVIDED FOR BY USING SAFETY PRACTICES, PROCEDURES AND EQUIPMENT AS DESCRIBED IN THE SAFETY TRAINING PROGRAMS, MANUALS AND SPARS.



STR - 62 TO STR - 65
 COND: 6- 954 KCMIL ACSS/TW 20/7 @ 9685# D.T., RS = 850FT (EAST SIDE)
 OPGW: 1- AC-26/57/635-48 FIBER @ 6775# D.T., RS = 851FT (EAST SIDE)
 COND SAG TABLE NH-257382, OPGW SHIELD SAG TABLE NH-257383
 COND SHOWN AT 392 DEG. FINAL, SHIELD(S) SHOWN AT -20 DEG. INITIAL

STR - 65 TO STR - 71
 COND: 6- 954 KCMIL ACSS/TW 20/7 @ 10295# D.T., RS = 1047FT (NORTH SIDE)
 OPGW: 1- AC-26/57/635-48 FIBER @ 7280# D.T., RS = 1048FT (NORTH SIDE)
 COND SAG TABLE NH-257382, OPGW SHIELD SAG TABLE NH-257383
 COND SHOWN AT 392 DEG. FINAL, SHIELD(S) SHOWN AT -20 DEG. INITIAL

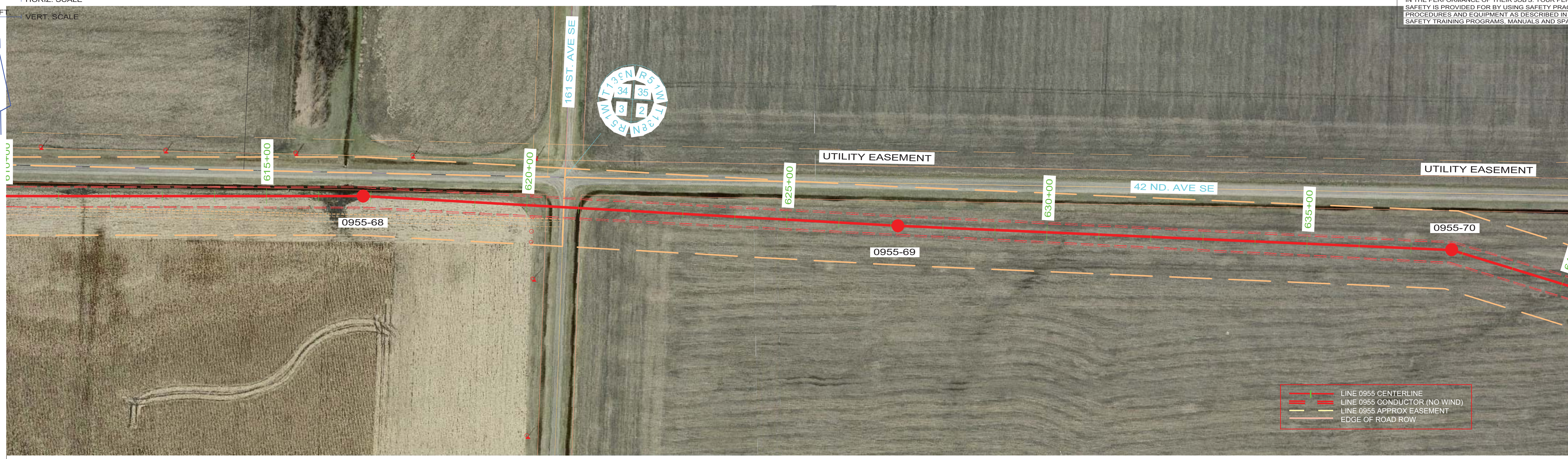
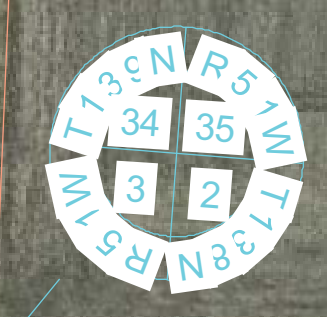


ISSUED FOR RECORD NDPSC PERMITTING - 5/8/2015

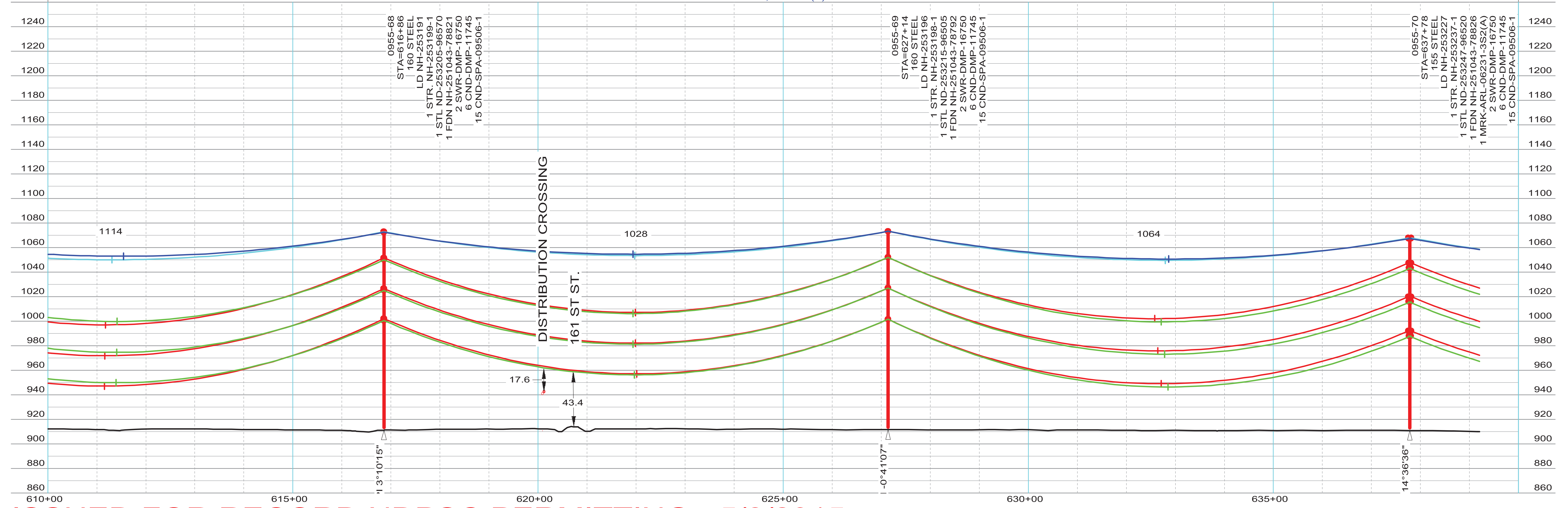
INTERNAL INFORMATION: DO NOT COPY OR DISTRIBUTE TO OTHERS WITHOUT EXPRESS WRITTEN CONSENT FROM XCEL ENERGY.

THIS MAP/DOCUMENT IS A TOOL TO ASSIST EMPLOYEES IN THE PERFORMANCE OF THEIR JOBS. YOUR PERSONAL SAFETY IS PROVIDED FOR BY USING SAFETY PRACTICES, PROCEDURES AND EQUIPMENT AS DESCRIBED IN THE SAFETY TRAINING PROGRAMS, MANUALS AND SPARS.

100.0 FT. HORIZ. SCALE
40.0 FT. VERT. SCALE



STR - 65 TO STR - 71
COND: 6- 954 KCMIL ACSS/TW 20/7 @ 10295# D.T., RS = 1047FT (NORTH SIDE)
OPGW: 1- AC-26/57/635-48 FIBER @ 7280# D.T., RS = 1048FT (NORTH SIDE)
COND SAG TABLE NH-257382, OPGW SHIELD SAG TABLE NH-257383
COND SHOWN AT 392 DEG. FINAL, SHIELD(S) SHOWN AT -20 DEG. INITIAL



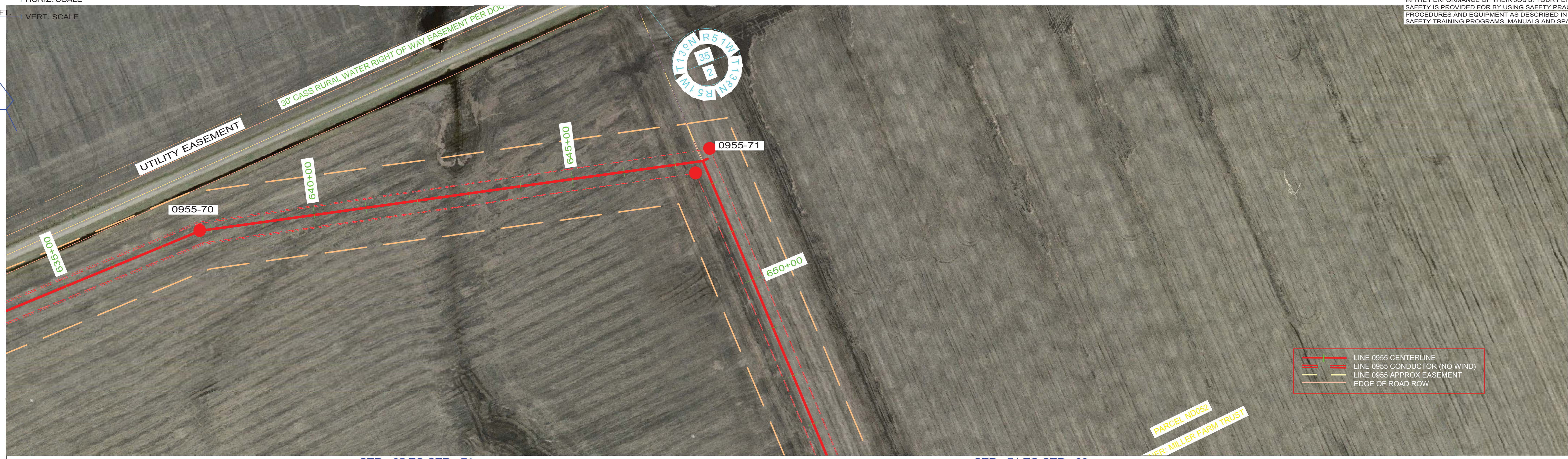
ISSUED FOR RECORD NDPSC PERMITTING - 5/8/2015

INTERNAL INFORMATION: DO NOT COPY OR DISTRIBUTE TO OTHERS WITHOUT EXPRESS WRITTEN CONSENT FROM XCEL ENERGY.

ENGINEERING DEPARTMENT, MINNEAPOLIS, MN	LINE NO. L0955	NH-253190-30	REV 1

THIS MAP/DOCUMENT IS A TOOL TO ASSIST EMPLOYEES IN THE PERFORMANCE OF THEIR JOB'S. YOUR PERSONAL SAFETY IS PROVIDED FOR BY USING SAFETY PRACTICES, PROCEDURES AND EQUIPMENT AS DESCRIBED IN THE SAFETY TRAINING PROGRAMS, MANUALS AND SPARS.

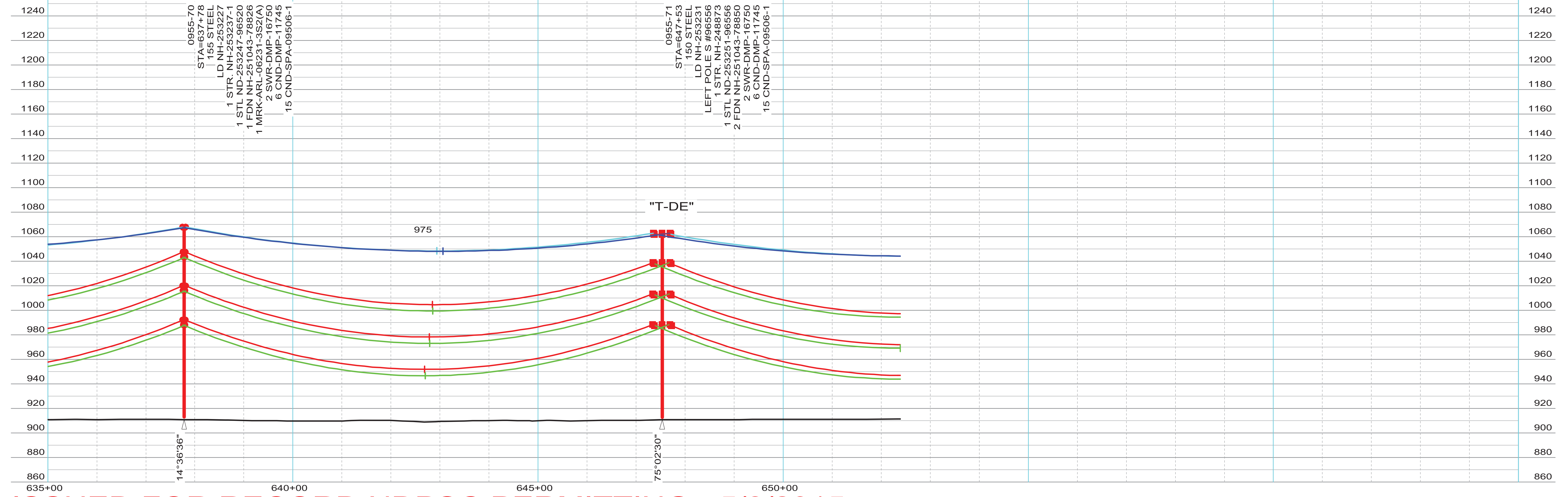
100.0 FT. HORIZ. SCALE
40.0 FT. VERT. SCALE



— LINE 0955 CENTERLINE
— LINE 0955 CONDUCTOR (NO WIND)
— LINE 0955 APPROX EASEMENT
— EDGE OF ROAD ROW

STR - 65 TO STR - 71
COND: 6- 954 KCMIL ACSS/TW 20/7 @ 10295# D.T., RS = 1047FT (NORTH SIDE)
OPGW: 1- AC-26/57/635-48 FIBER @ 7280# D.T., RS = 1048FT (NORTH SIDE)
COND SAG TABLE NH-257382, OPGW SHIELD SAG TABLE NH-257383
COND SHOWN AT 392 DEG. FINAL, SHIELD(S) SHOWN AT -20 DEG. INITIAL

STR - 71 TO STR - 89
COND: 6- 954 KCMIL ACSS/TW 20/7 @ 10180# D.T., RS = 1008FT (EAST SIDE)
OPGW: 1- AC-26/57/635-48 FIBER @ 7195# D.T., RS = 1008FT (EAST SIDE)
COND SAG TABLE NH-257382, OPGW SHIELD SAG TABLE NH-257383
COND SHOWN AT 392 DEG. FINAL, SHIELD(S) SHOWN AT -20 DEG. INITIAL

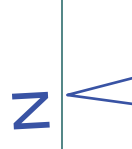


ISSUED FOR RECORD NDPSC PERMITTING - 5/8/2015

INTERNAL INFORMATION: DO NOT COPY OR DISTRIBUTE TO OTHERS WITHOUT EXPRESS WRITTEN CONSENT FROM XCEL ENERGY.

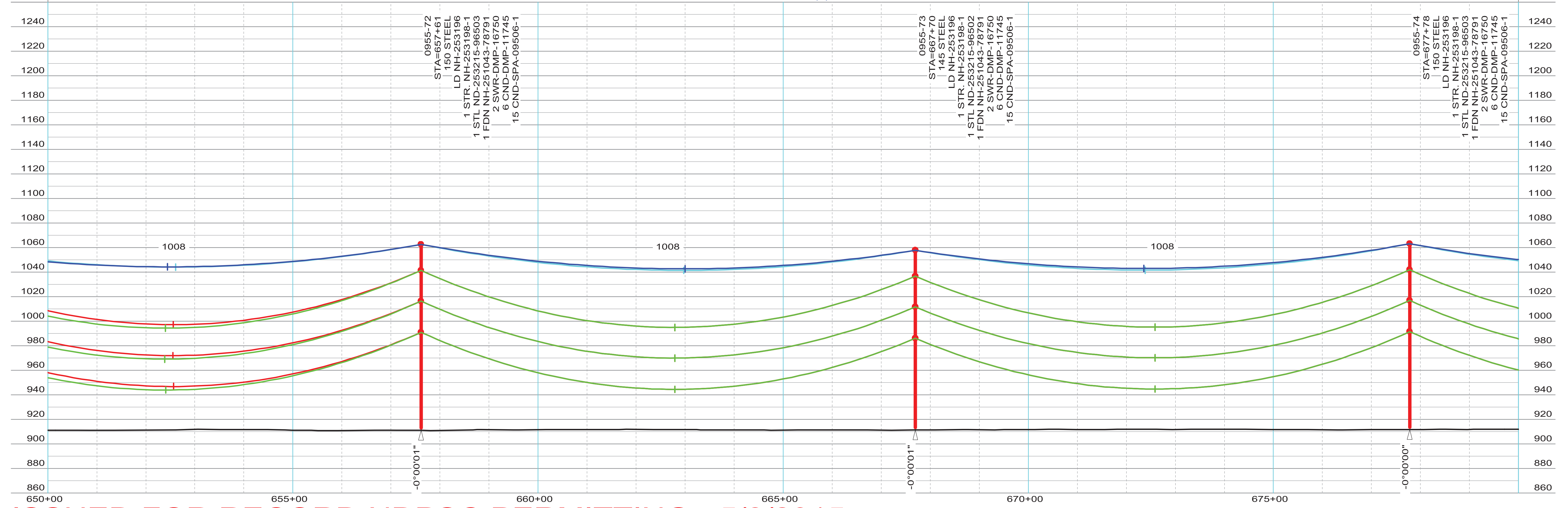
THIS MAP/DOCUMENT IS A TOOL TO ASSIST EMPLOYEES IN THE PERFORMANCE OF THEIR JOB'S. YOUR PERSONAL SAFETY IS PROVIDED FOR BY USING SAFETY PRACTICES, PROCEDURES AND EQUIPMENT AS DESCRIBED IN THE SAFETY TRAINING PROGRAMS, MANUALS AND SPARS.

100.0 FT. HORIZ. SCALE
40.0 FT. VERT. SCALE



LINE 0955 CENTERLINE
LINE 0955 CONDUCTOR (NO WIND)
LINE 0955 APPROX EASEMENT
EDGE OF ROAD ROW

STR - 71 TO STR - 89
COND: 6- 954 KCMIL ACSS/TW 20/7 @ 10180# D.T., RS = 1008FT (EAST SIDE)
OPGW: 1- AC-26/57/635-48 FIBER @ 7195# D.T., RS = 1008FT (EAST SIDE)
COND SAG TABLE NH-257382, OPGW SHIELD SAG TABLE NH-257383
COND SHOWN AT 392 DEG. FINAL, SHIELD(S) SHOWN AT -20 DEG. INITIAL



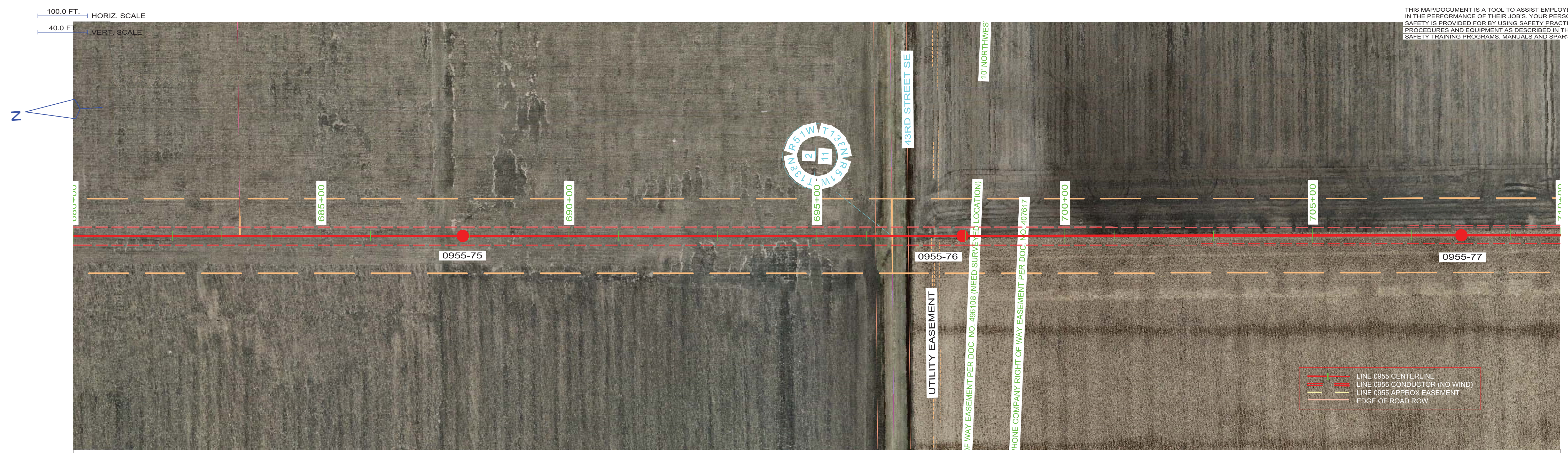
ISSUED FOR RECORD NDPSC PERMITTING - 5/8/2015

INTERNAL INFORMATION: DO NOT COPY OR DISTRIBUTE TO OTHERS WITHOUT EXPRESS WRITTEN CONSENT FROM XCEL ENERGY.

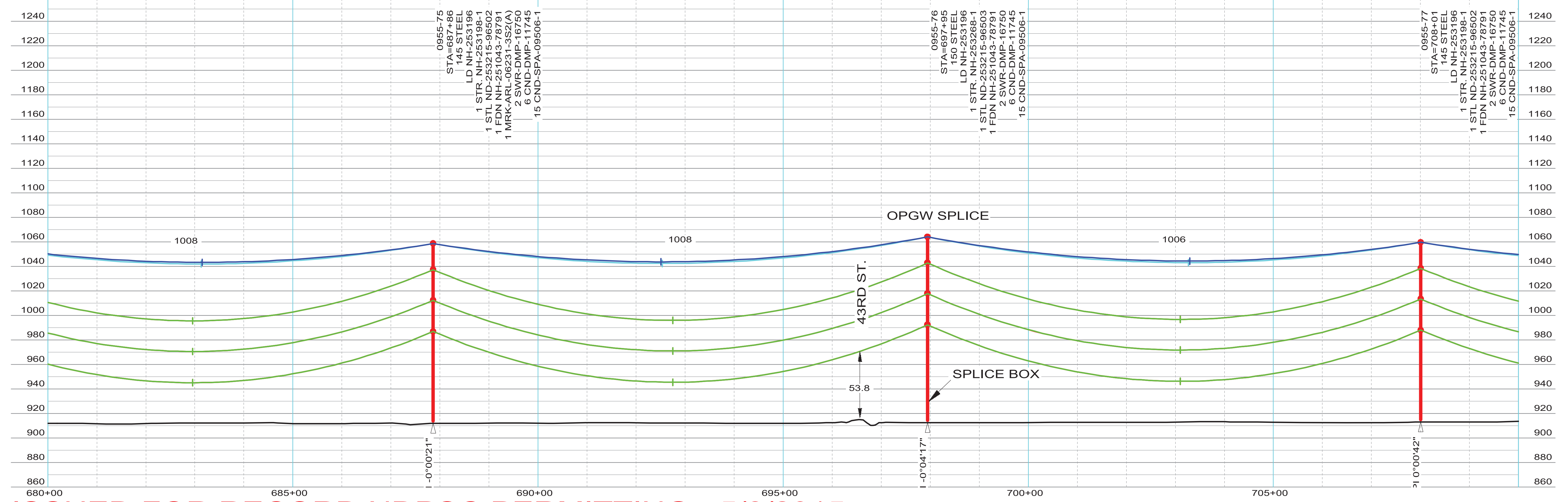
ENGINEERING DEPARTMENT, MINNEAPOLIS, MN

LINE NO. L0955
NH-253190-32
REV 1

THIS MAP/DOCUMENT IS A TOOL TO ASSIST EMPLOYEES IN THE PERFORMANCE OF THEIR JOB'S. YOUR PERSONAL SAFETY IS PROVIDED FOR BY USING SAFETY PRACTICES, PROCEDURES AND EQUIPMENT AS DESCRIBED IN THE SAFETY TRAINING PROGRAMS, MANUALS AND SPARS.



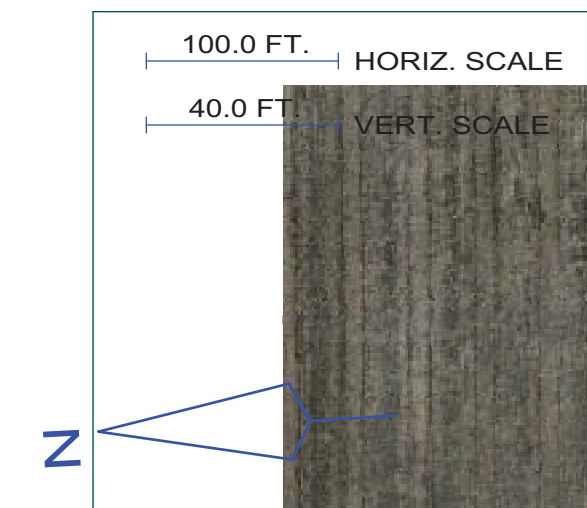
STR - 71 TO STR - 89
 COND: 6- 954 KCMIL ACSS/TW 20/7 @ 10180# D.T., RS = 1008FT (EAST SIDE)
 OPGW: 1- AC-26/57/635-48 FIBER @ 7195# D.T., RS = 1008FT (EAST SIDE)
 COND SAG TABLE NH-257382, OPGW SHIELD SAG TABLE NH-257383
 COND SHOWN AT 392 DEG. FINAL, SHIELD(S) SHOWN AT -20 DEG. INITIAL



ISSUED FOR RECORD NDPSC PERMITTING - 5/8/2015

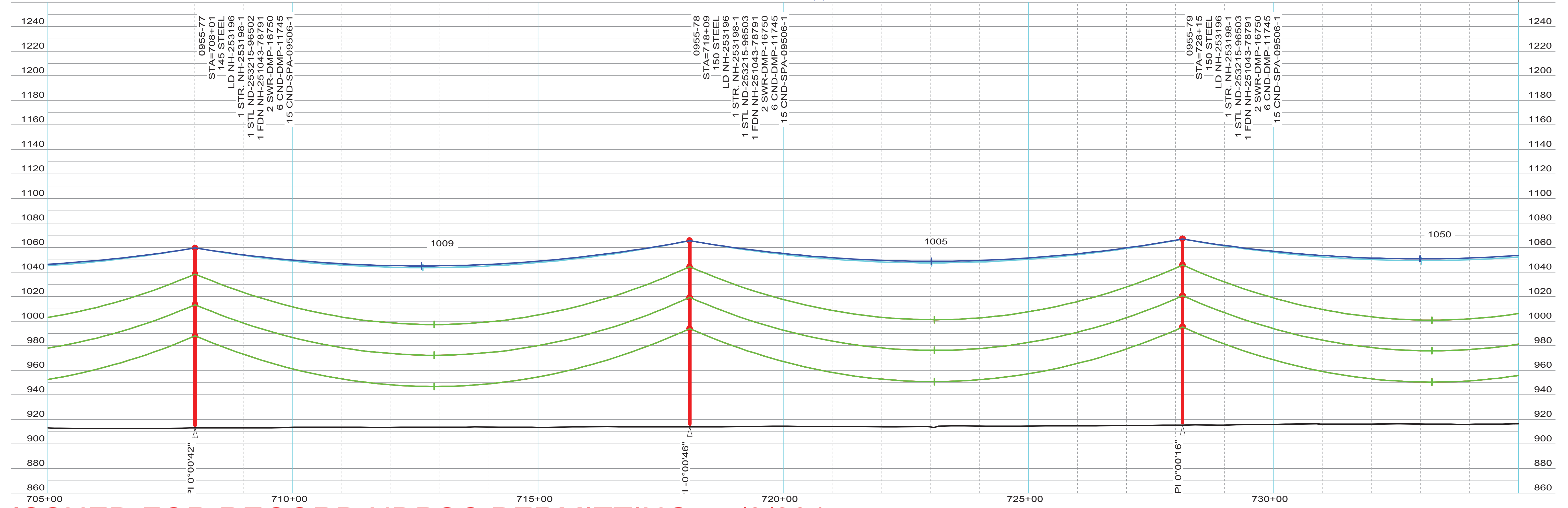
INTERNAL INFORMATION: DO NOT COPY OR DISTRIBUTE TO OTHERS WITHOUT EXPRESS WRITTEN CONSENT FROM XCEL ENERGY.

THIS MAP/DOCUMENT IS A TOOL TO ASSIST EMPLOYEES IN THE PERFORMANCE OF THEIR JOB'S. YOUR PERSONAL SAFETY IS PROVIDED FOR BY USING SAFETY PRACTICES, PROCEDURES AND EQUIPMENT AS DESCRIBED IN THE SAFETY TRAINING PROGRAMS, MANUALS AND SPARS.



- LINE 0955 CENTERLINE
- LINE 0955 CONDUCTOR (NO WIND)
- LINE 0955 APPROX EASEMENT
- EDGE OF ROAD ROW

STR - 71 TO STR - 89
 COND: 6- 954 KCMIL ACSS/TW 20/7 @ 10180# D.T., RS = 1008FT (EAST SIDE)
 OPGW: 1- AC-26/57/635-48 FIBER @ 7195# D.T., RS = 1008FT (EAST SIDE)
 COND SAG TABLE NH-257382, OPGW SHIELD SAG TABLE NH-257383
 COND SHOWN AT 392 DEG. FINAL, SHIELD(S) SHOWN AT -20 DEG. INITIAL



ISSUED FOR RECORD NDPSC PERMITTING - 5/8/2015

INTERNAL INFORMATION: DO NOT COPY OR DISTRIBUTE TO OTHERS WITHOUT EXPRESS WRITTEN CONSENT FROM XCEL ENERGY.

ENGINEERING DEPARTMENT, MINNEAPOLIS, MN	LINE NO. L0955	NH-253190-34	REV 1