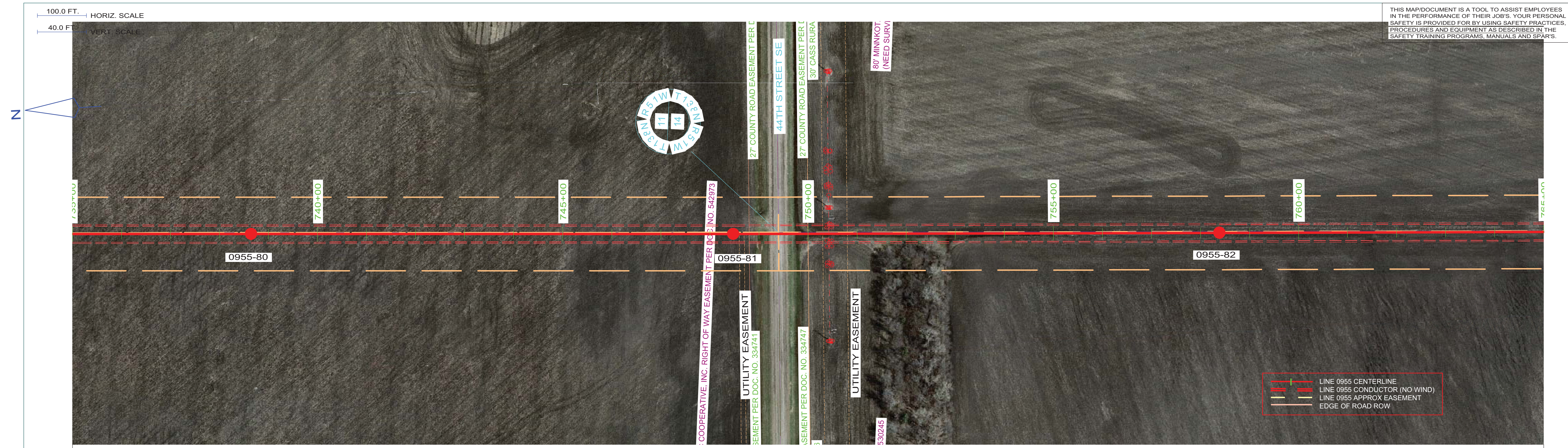
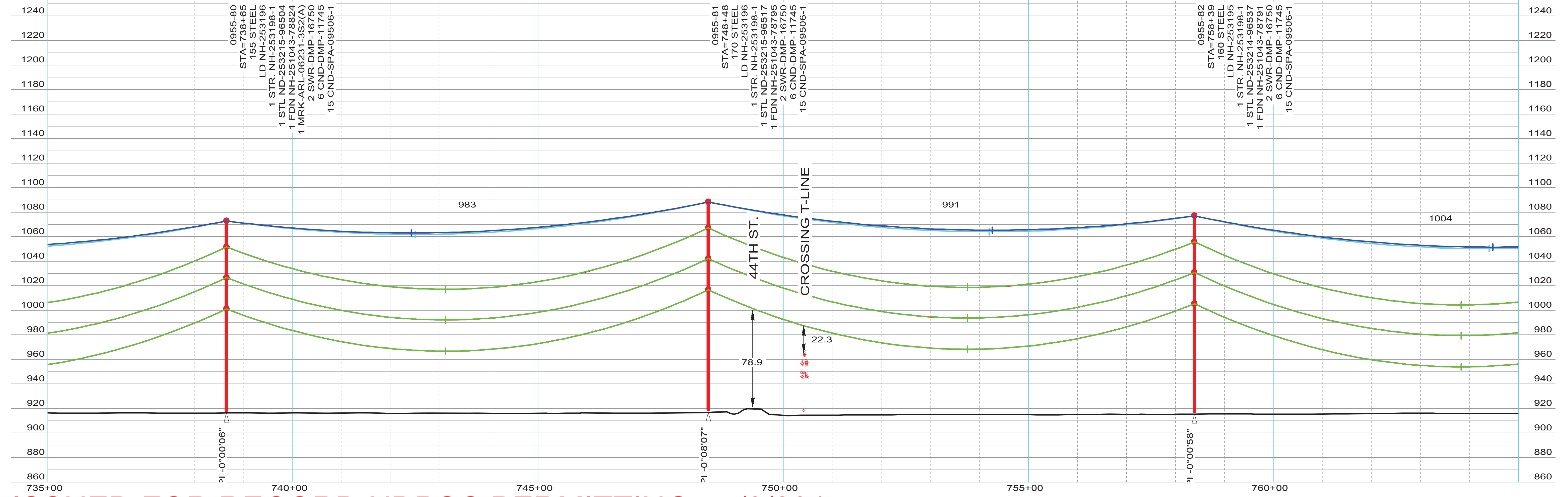


THIS MAP/DOCUMENT IS A TOOL TO ASSIST EMPLOYEES IN THE PERFORMANCE OF THEIR JOB'S. YOUR PERSONAL SAFETY IS PROVIDED FOR BY USING SAFETY PRACTICES, PROCEDURES AND EQUIPMENT AS DESCRIBED IN THE SAFETY TRAINING PROGRAMS, MANUALS AND SPARS.



STR - 71 TO STR - 89  
 COND: 6- 954 KCMIL ACSS/TW 20/7 @ 10180# D.T., RS = 1008FT (EAST SIDE)  
 OPGW: 1- AC-26/57/635-48 FIBER @ 7195# D.T., RS = 1008FT (EAST SIDE)  
 COND SAG TABLE NH-257382, OPGW SHIELD SAG TABLE NH-257383  
 COND SHOWN AT 392 DEG. FINAL, SHIELD(S) SHOWN AT -20 DEG. INITIAL



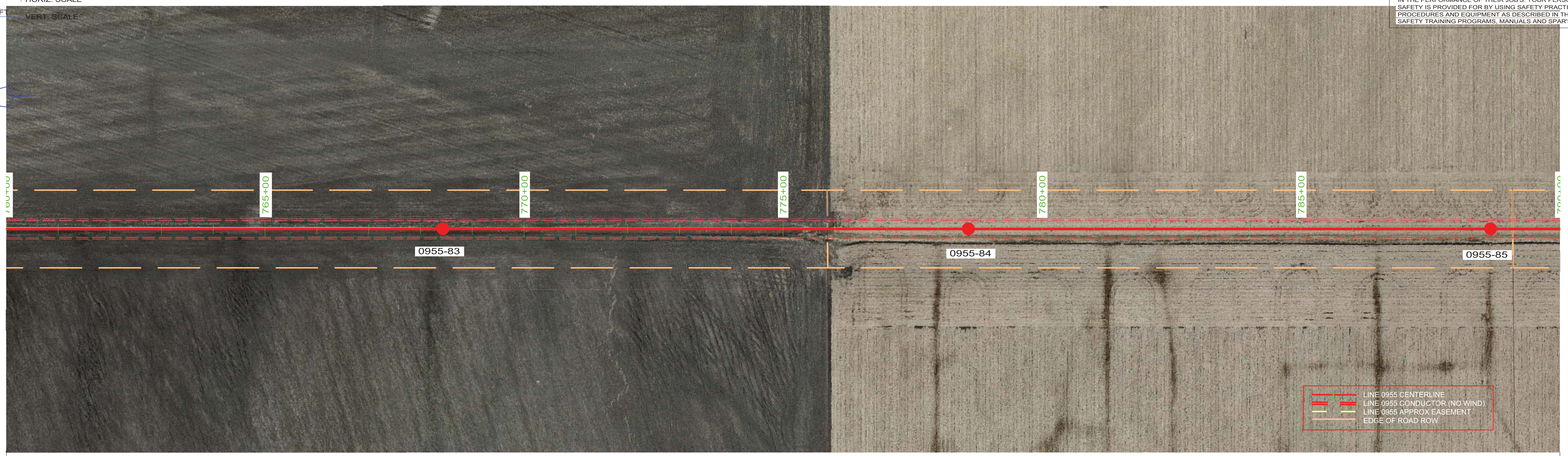
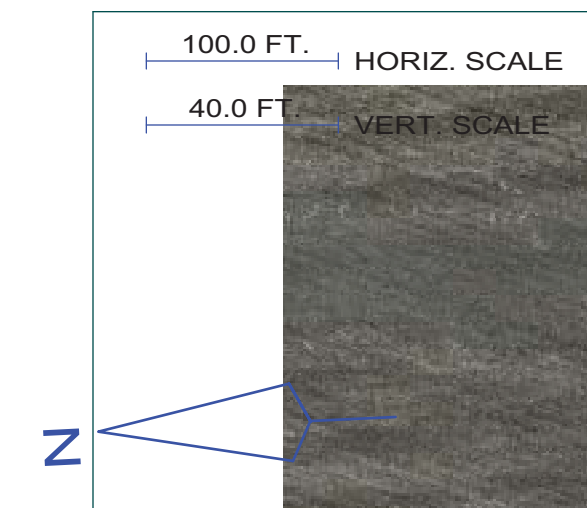
ISSUED FOR RECORD NDPSC PERMITTING - 5/8/2015

INTERNAL INFORMATION: DO NOT COPY OR DISTRIBUTE TO OTHERS WITHOUT EXPRESS WRITTEN CONSENT FROM XCEL ENERGY.

ENGINEERING DEPARTMENT, MINNEAPOLIS, MN  
Xcel Energy

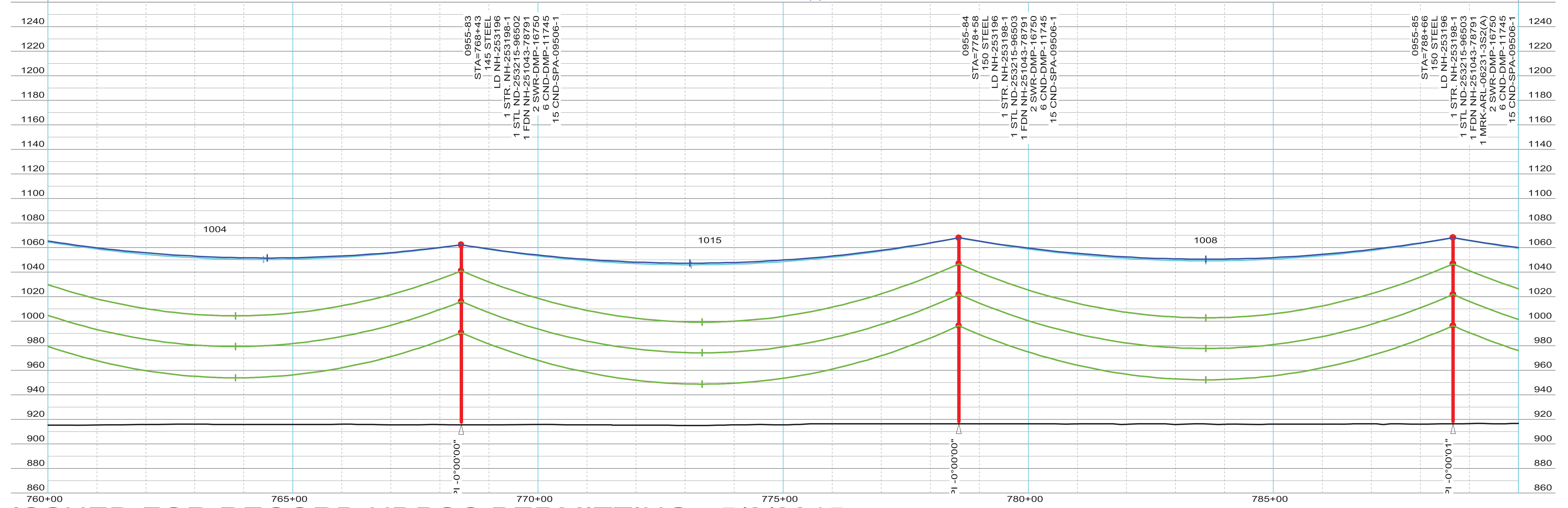
LINE NO. L0955	NH-253190-35	REV 1
----------------	--------------	-------

THIS MAP/DRAWING IS A TOOL TO ASSIST EMPLOYEES IN THE PERFORMANCE OF THEIR JOB'S. YOUR PERSONAL SAFETY IS PROVIDED FOR BY USING SAFETY PRACTICES, PROCEDURES AND EQUIPMENT AS DESCRIBED IN THE SAFETY TRAINING PROGRAMS, MANUALS AND SPARS.



	LINE 0955 CENTERLINE
	LINE 0955 CONDUCTOR (NO WIND)
	LINE 0955 APPROX EASEMENT
	EDGE OF ROAD ROW

STR - 71 TO STR - 89  
 COND: 6- 954 KCMIL ACSS/TW 20/7 @ 10180# D.T., RS = 1008FT (EAST SIDE)  
 OPGW: 1- AC-26/57/635-48 FIBER @ 7195# D.T., RS = 1008FT (EAST SIDE)  
 COND SAG TABLE NH-257382, OPGW SHIELD SAG TABLE NH-257383  
 COND SHOWN AT 392 DEG. FINAL, SHIELD(S) SHOWN AT -20 DEG. INITIAL



0955-83  
 STA=768+43  
 145 STEEL  
 LD NH-253196  
 1 STR. NH-253198-1  
 1 STL ND-253215-96502  
 1 FDN NH-251043-78791  
 2 SWR-DMP-16750  
 6 CND-DMP-11745  
 15 CND-SPA-09506-1

0955-84  
 STA=778+58  
 150 STEEL  
 LD NH-253196  
 1 STR. NH-253198-1  
 1 STL ND-253215-96503  
 1 FDN NH-251043-78791  
 2 SWR-DMP-16750  
 6 CND-DMP-11745  
 15 CND-SPA-09506-1

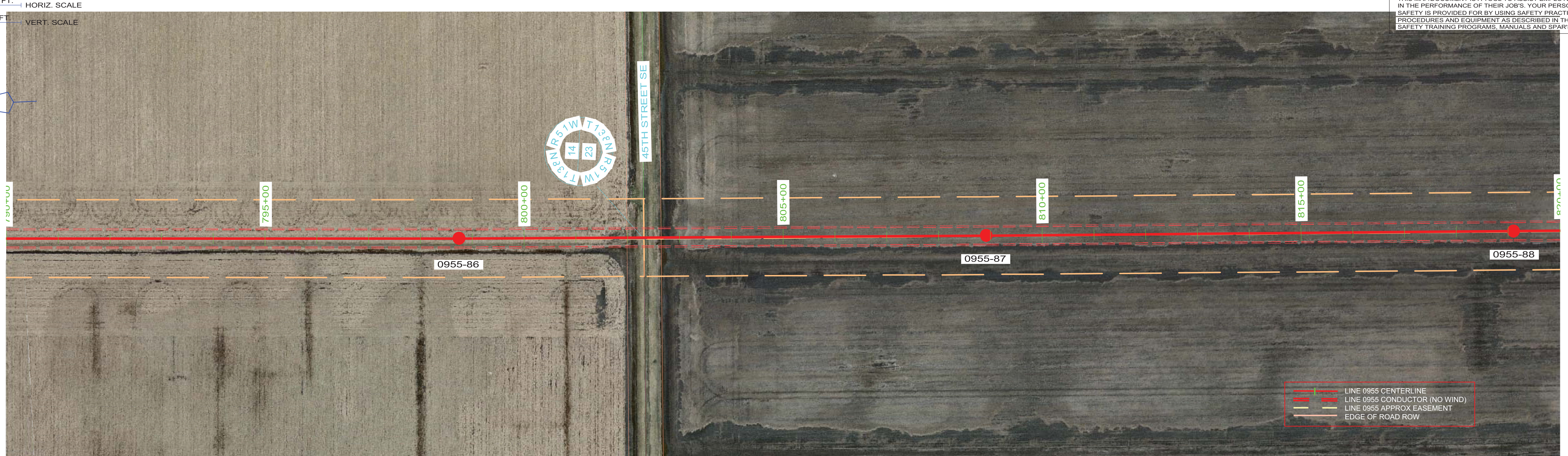
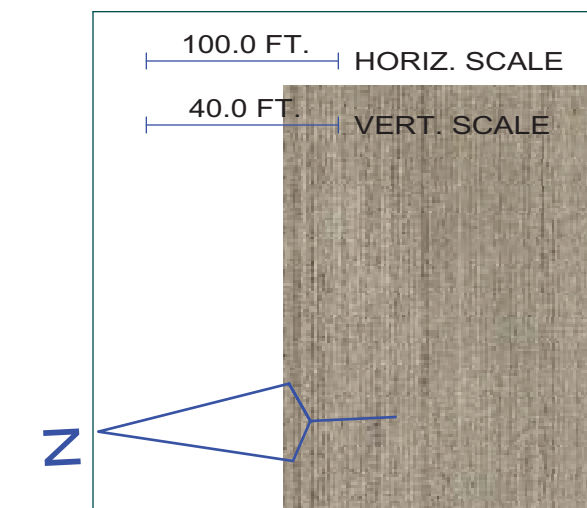
0955-85  
 STA=788+66  
 150 STEEL  
 LD NH-253196  
 1 STR. NH-253198-1  
 1 STL ND-253215-96503  
 1 FDN NH-251043-78791  
 1 MRK-ARL-06231-3S2(A)  
 2 SWR-DMP-16750  
 6 CND-DMP-11745  
 15 CND-SPA-09506-1

ISSUED FOR RECORD NDPSC PERMITTING - 5/8/2015

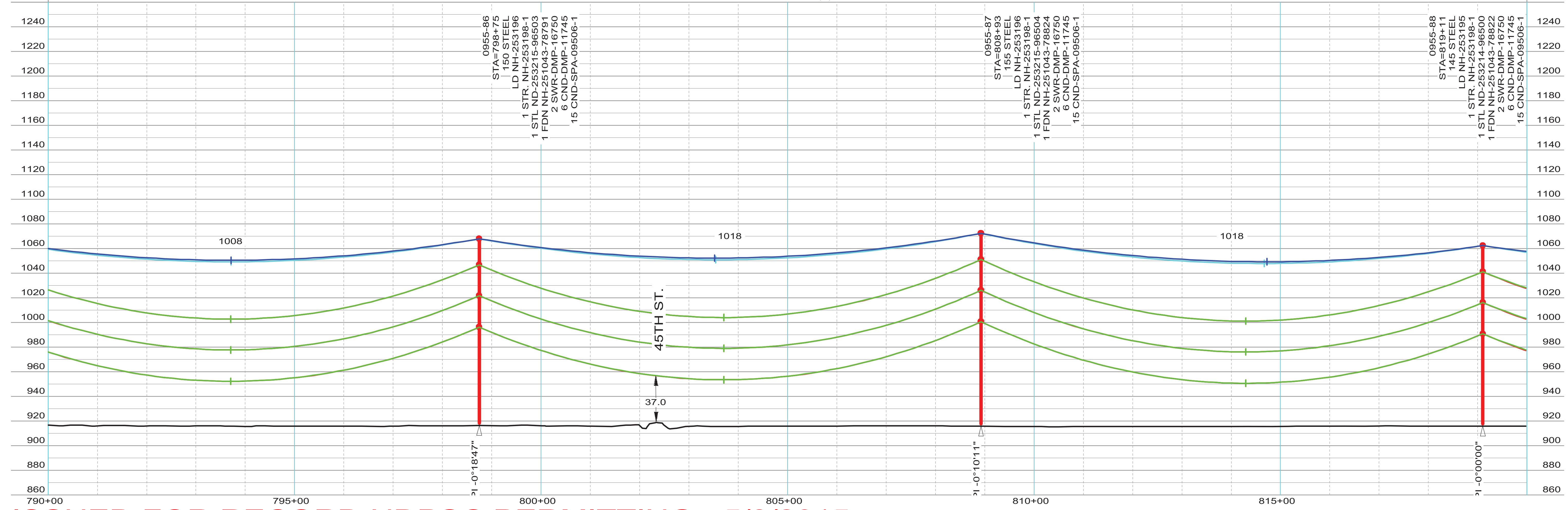
INTERNAL INFORMATION: DO NOT COPY OR DISTRIBUTE TO OTHERS WITHOUT EXPRESS WRITTEN CONSENT FROM XCEL ENERGY.

ENGINEERING DEPARTMENT, MINNEAPOLIS, MN	LINE NO. L0955	NH-253190-36	REV 1
---	----------------	--------------	-------

THIS MAP/DOCUMENT IS A TOOL TO ASSIST EMPLOYEES IN THE PERFORMANCE OF THEIR JOB'S. YOUR PERSONAL SAFETY IS PROVIDED FOR BY USING SAFETY PRACTICES, PROCEDURES AND EQUIPMENT AS DESCRIBED IN THE SAFETY TRAINING PROGRAMS, MANUALS AND SPARS.



STR - 71 TO STR - 89  
COND: 6- 954 KCMIL ACSS/TW 20/7 @ 10180# D.T., RS = 1008FT (EAST SIDE)  
OPGW: 1- AC-26/57/635-48 FIBER @ 7195# D.T., RS = 1008FT (EAST SIDE)  
COND SAG TABLE NH-257382, OPGW SHIELD SAG TABLE NH-257383  
COND SHOWN AT 392 DEG. FINAL, SHIELD(S) SHOWN AT -20 DEG. INITIAL

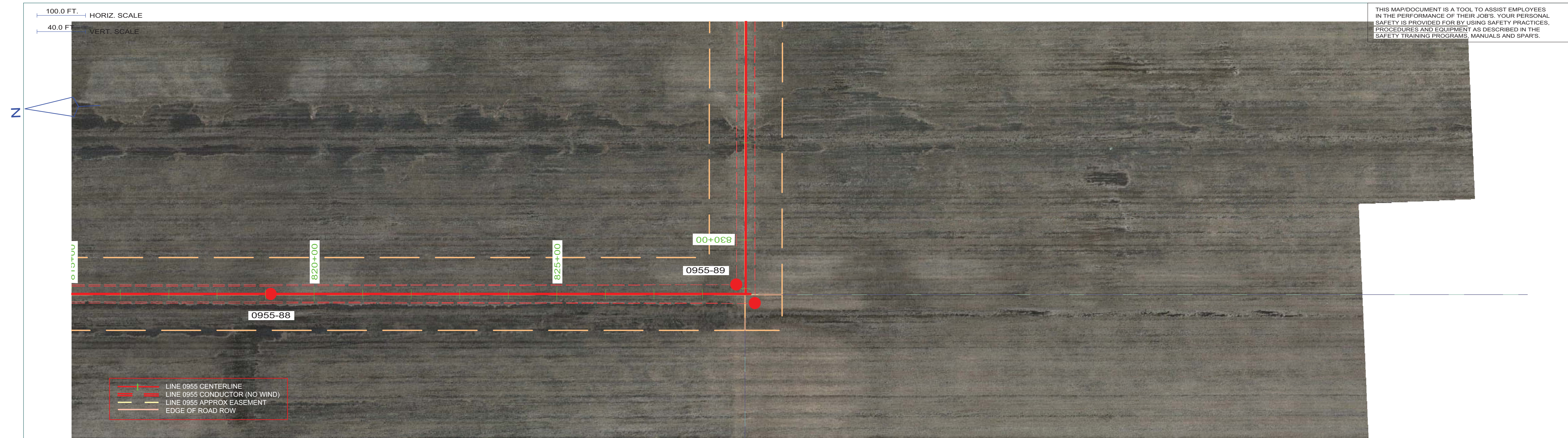


**ISSUED FOR RECORD NDPSC PERMITTING - 5/8/2015**

INTERNAL INFORMATION: DO NOT COPY OR DISTRIBUTE TO OTHERS WITHOUT EXPRESS WRITTEN CONSENT FROM XCEL ENERGY.

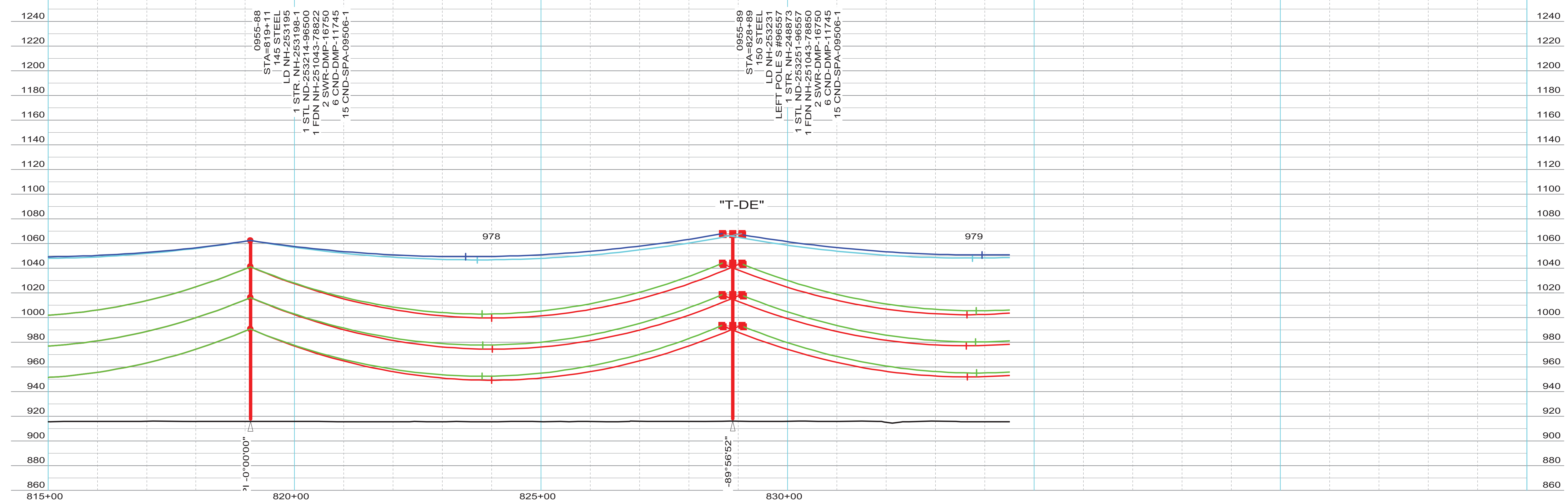
ENGINEERING DEPARTMENT, MINNEAPOLIS, MN	LINE NO. L0955	NH-253190-37	REV 1

THIS MAP/DOCUMENT IS A TOOL TO ASSIST EMPLOYEES IN THE PERFORMANCE OF THEIR JOB'S. YOUR PERSONAL SAFETY IS PROVIDED FOR BY USING SAFETY PRACTICES, PROCEDURES AND EQUIPMENT AS DESCRIBED IN THE SAFETY TRAINING PROGRAMS, MANUALS AND SPARS.



STR - 71 TO STR - 89  
 COND: 6- 954 KCMIL ACSS/TW 20/7 @ 10180# D.T., RS = 1008FT (EAST SIDE)  
 OPGW: 1- AC-26/57/635-48 FIBER @ 7195# D.T., RS = 1008FT (EAST SIDE)  
 COND SAG TABLE NH-257382, OPGW SHIELD SAG TABLE NH-257383  
 COND SHOWN AT 392 DEG. FINAL, SHIELD(S) SHOWN AT -20 DEG. INITIAL

STR - 89 TO STR - 114  
 COND: 6- 954 KCMIL ACSS/TW 20/7 @ 10340# D.T., RS = 1063FT (NORTH SIDE)  
 OPGW: 1- AC-26/57/635-48 FIBER @ 7315# D.T., RS = 1063FT (NORTH SIDE)  
 COND SAG TABLE NH-257384, OPGW SHIELD SAG TABLE NH-257385  
 COND SHOWN AT 392 DEG. FINAL, SHIELD(S) SHOWN AT -20 DEG. INITIAL



ISSUED FOR RECORD NDPSC PERMITTING - 5/8/2015

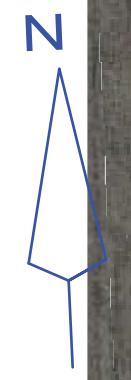
INTERNAL INFORMATION: DO NOT COPY OR DISTRIBUTE TO OTHERS WITHOUT EXPRESS WRITTEN CONSENT FROM XCEL ENERGY.

ENGINEERING DEPARTMENT, MINNEAPOLIS, MN  
Xcel Energy

LINE NO. L0955  
 NH-253190-38  
 REV 1

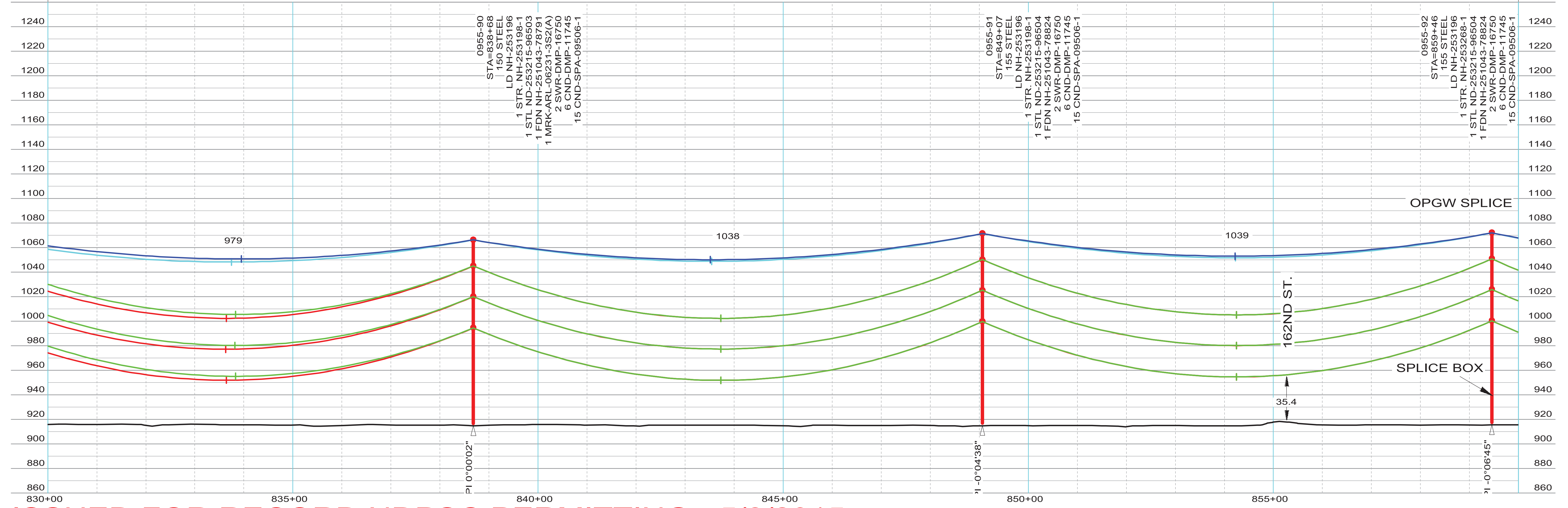
THIS MAP/DOCUMENT IS A TOOL TO ASSIST EMPLOYEES IN THE PERFORMANCE OF THEIR JOB'S. YOUR PERSONAL SAFETY IS PROVIDED FOR BY USING SAFETY PRACTICES, PROCEDURES AND EQUIPMENT AS DESCRIBED IN THE SAFETY TRAINING PROGRAMS, MANUALS AND SPARS.

100.0 FT. HORIZ. SCALE  
40.0 FT. VERT. SCALE



LINE 0955 CENTERLINE  
LINE 0955 CONDUCTOR (NO WIND)  
LINE 0955 APPROX EASEMENT  
EDGE OF ROAD ROW

STR - 89 TO STR - 114  
COND: 6- 954 KCMIL ACSS/TW 20/7 @ 10340# D.T., RS = 1063FT (NORTH SIDE)  
OPGW: 1- AC-26/57/635-48 FIBER @ 7315# D.T., RS = 1063FT (NORTH SIDE)  
COND SAG TABLE NH-257384, OPGW SHIELD SAG TABLE NH-257385  
COND SHOWN AT 392 DEG. FINAL, SHIELD(S) SHOWN AT -20 DEG. INITIAL



0955-90  
STA=838+68  
150 STEEL  
LD NH-253196  
1 STR. NH-253196-1  
1 STL ND-253215-96503  
1 FDN NH-251043-78791  
1 MRK-ARL-06231-3S2(A)  
2 SWR-DMP-16750  
6 CND-DMP-11745  
15 CND-SPA-09506-1

0955-91  
STA=849+07  
155 STEEL  
LD NH-253196  
1 STR. NH-253196-1  
1 STL ND-253215-96504  
1 FDN NH-251043-78824  
2 SWR-DMP-16750  
6 CND-DMP-11745  
15 CND-SPA-09506-1

0955-92  
STA=859+46  
155 STEEL  
LD NH-253196  
1 STR. NH-253196-1  
1 STL ND-253215-96504  
1 FDN NH-251043-78824  
2 SWR-DMP-16750  
6 CND-DMP-11745  
15 CND-SPA-09506-1

ISSUED FOR RECORD NDPSC PERMITTING - 5/8/2015

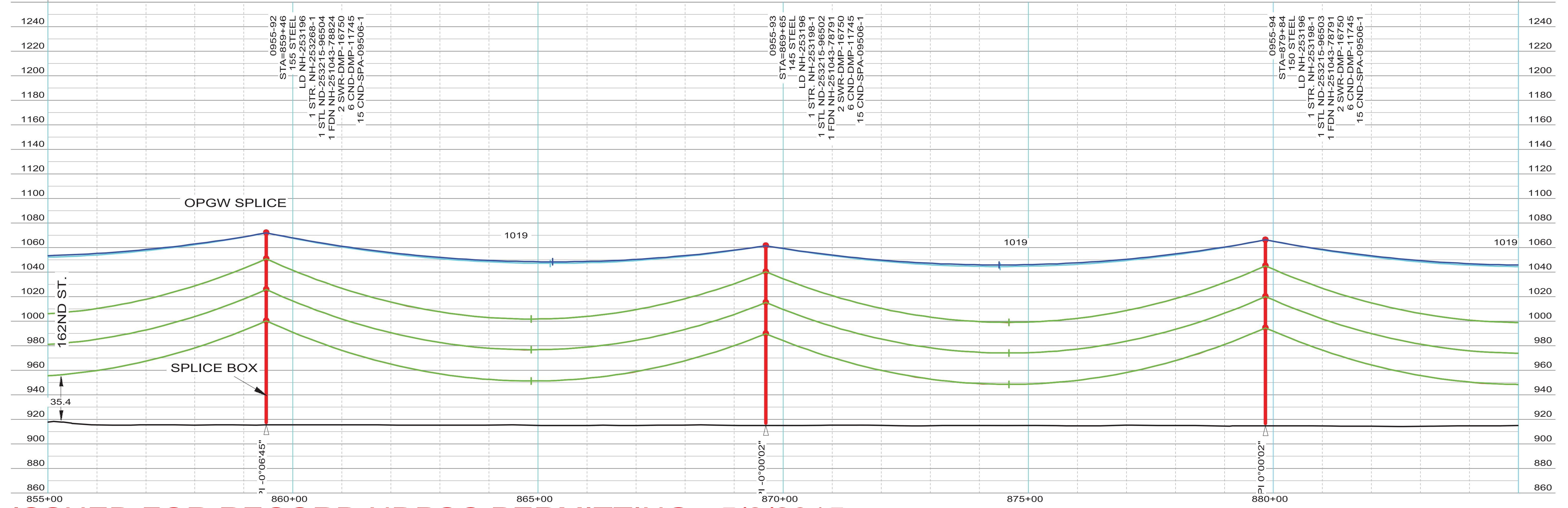
INTERNAL INFORMATION: DO NOT COPY OR DISTRIBUTE TO OTHERS WITHOUT EXPRESS WRITTEN CONSENT FROM XCEL ENERGY.

THIS MAP/DOCUMENT IS A TOOL TO ASSIST EMPLOYEES IN THE PERFORMANCE OF THEIR JOB'S. YOUR PERSONAL SAFETY IS PROVIDED FOR BY USING SAFETY PRACTICES, PROCEDURES AND EQUIPMENT AS DESCRIBED IN THE SAFETY TRAINING PROGRAMS, MANUALS AND SPARS.

100.0 FT. HORIZ. SCALE  
40.0 FT. VERT. SCALE



STR - 89 TO STR - 114  
 COND: 6- 954 KCMIL ACSS/TW 20/7 @ 10340# D.T., RS = 1063FT (NORTH SIDE)  
 OPGW: 1- AC-26/57/635-48 FIBER @ 7315# D.T., RS = 1063FT (NORTH SIDE)  
 COND SAG TABLE NH-257384, OPGW SHIELD SAG TABLE NH-257385  
 COND SHOWN AT 392 DEG. FINAL, SHIELD(S) SHOWN AT -20 DEG. INITIAL



ISSUED FOR RECORD NDPSC PERMITTING - 5/8/2015

INTERNAL INFORMATION: DO NOT COPY OR DISTRIBUTE TO OTHERS WITHOUT EXPRESS WRITTEN CONSENT FROM XCEL ENERGY.

ENGINEERING DEPARTMENT, MINNEAPOLIS, MN	LINE NO. L0955	NH-253190-40	REV 1

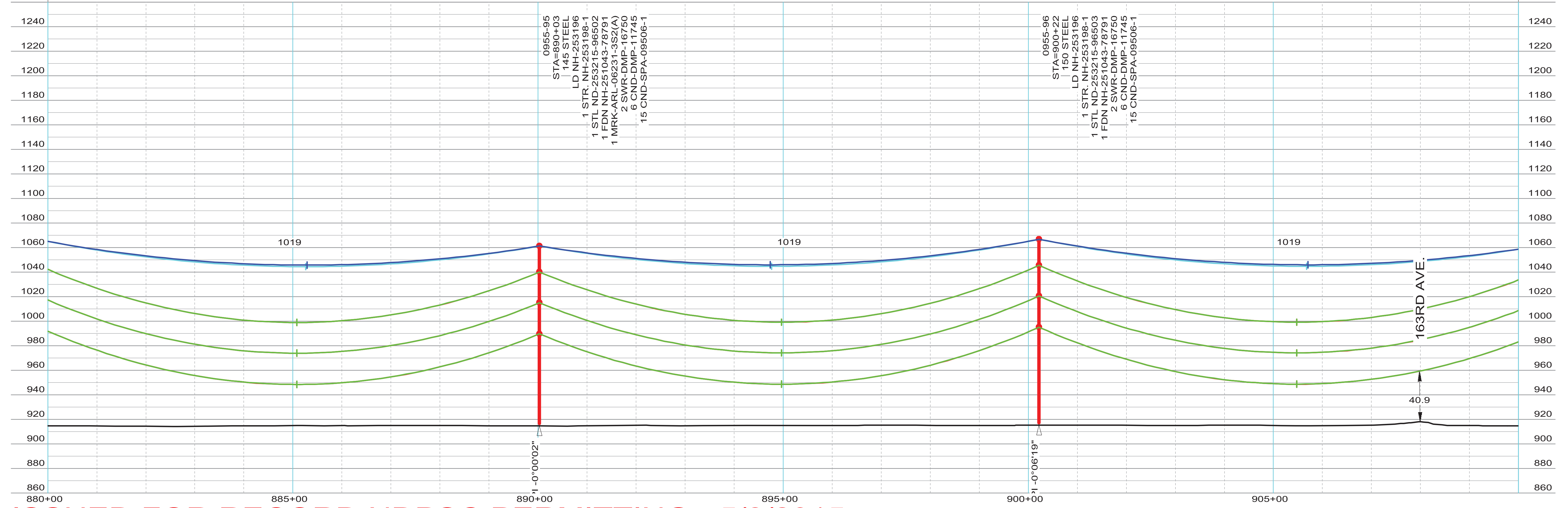
THIS MAP/DOCUMENT IS A TOOL TO ASSIST EMPLOYEES IN THE PERFORMANCE OF THEIR JOB'S. YOUR PERSONAL SAFETY IS PROVIDED FOR BY USING SAFETY PRACTICES, PROCEDURES AND EQUIPMENT AS DESCRIBED IN THE SAFETY TRAINING PROGRAMS, MANUALS AND SPARS.

100.0 FT. HORIZ. SCALE  
40.0 FT. VERT. SCALE



LINE 0955 CENTERLINE  
LINE 0955 CONDUCTOR (NO WIND)  
LINE 0955 APPROX EASEMENT  
EDGE OF ROAD ROW

STR - 89 TO STR - 114  
COND: 6- 954 KCMIL ACSS/TW 20/7 @ 10340# D.T., RS = 1063FT (NORTH SIDE)  
OPGW: 1- AC-26/57/635-48 FIBER @ 7315# D.T., RS = 1063FT (NORTH SIDE)  
COND SAG TABLE NH-257384, OPGW SHIELD SAG TABLE NH-257385  
COND SHOWN AT 392 DEG. FINAL, SHIELD(S) SHOWN AT -20 DEG. INITIAL



0955-95  
STA=890+03  
145 STEEL  
LD NH-253196  
1 STR NH-253198-1  
1 STL ND-253215-96502  
1 FDN NH-251043-78791  
1 MRK-ARL-06231-3S2(A)  
2 SWR-DMP-16750  
6 CND-DMP-11745  
15 CND-SPA-09506-1

0955-96  
STA=900+22  
150 STEEL  
LD NH-253196  
1 STR NH-253198-1  
1 STL ND-253215-96503  
1 FDN NH-251043-78791  
2 SWR-DMP-16750  
6 CND-DMP-11745  
15 CND-SPA-09506-1

ISSUED FOR RECORD NDPSC PERMITTING - 5/8/2015

INTERNAL INFORMATION: DO NOT COPY OR DISTRIBUTE TO OTHERS WITHOUT EXPRESS WRITTEN CONSENT FROM XCEL ENERGY.

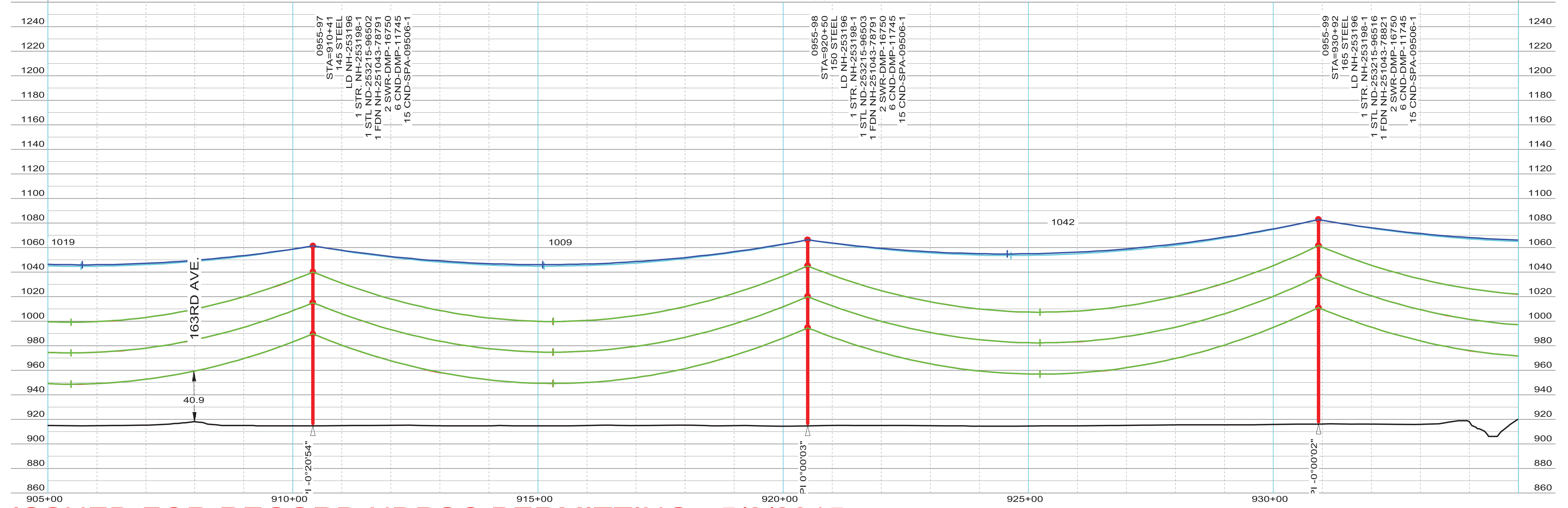
ENGINEERING DEPARTMENT, MINNEAPOLIS, MN

LINE NO. L0955  
NH-253190-41  
REV 1

THIS MAP/DOCUMENT IS A TOOL TO ASSIST EMPLOYEES IN THE PERFORMANCE OF THEIR JOB'S. YOUR PERSONAL SAFETY IS PROVIDED FOR BY USING SAFETY PRACTICES, PROCEDURES AND EQUIPMENT AS DESCRIBED IN THE SAFETY TRAINING PROGRAMS, MANUALS AND SPARS.



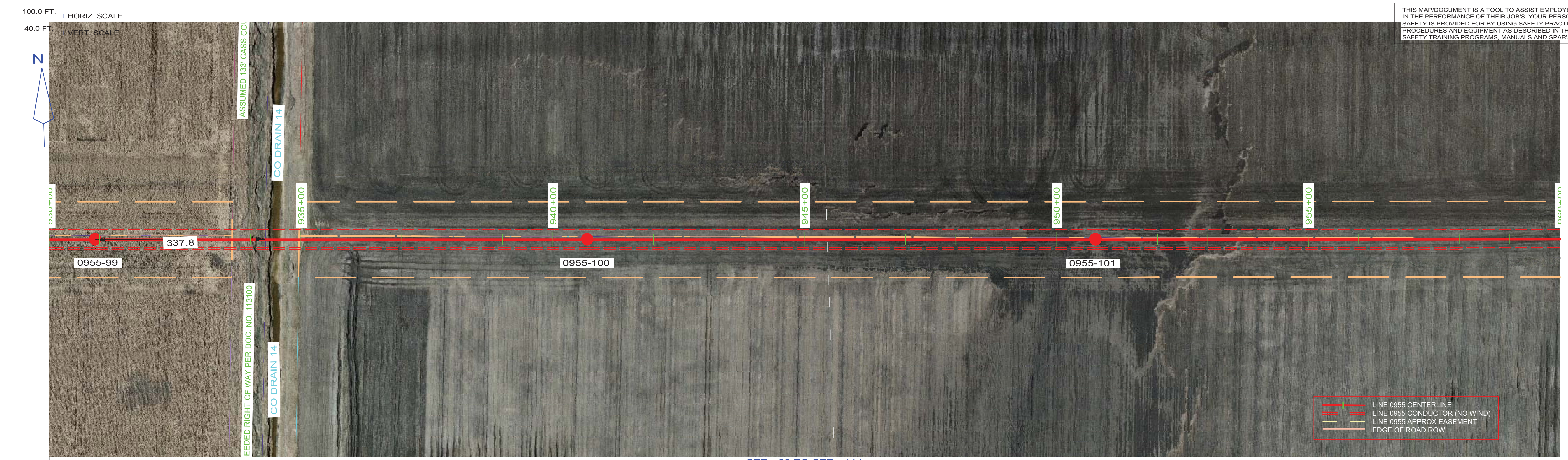
STR - 89 TO STR - 114  
 COND: 6- 954 KCMIL ACSS/TW 20/7 @ 10340# D.T., RS = 1063FT (NORTH SIDE)  
 OPGW: 1- AC-26/57/635-48 FIBER @ 7315# D.T., RS = 1063FT (NORTH SIDE)  
 COND SAG TABLE NH-257384, OPGW SHIELD SAG TABLE NH-257385  
 COND SHOWN AT 392 DEG. FINAL, SHIELD(S) SHOWN AT -20 DEG. INITIAL



ISSUED FOR RECORD NDPSC PERMITTING - 5/8/2015

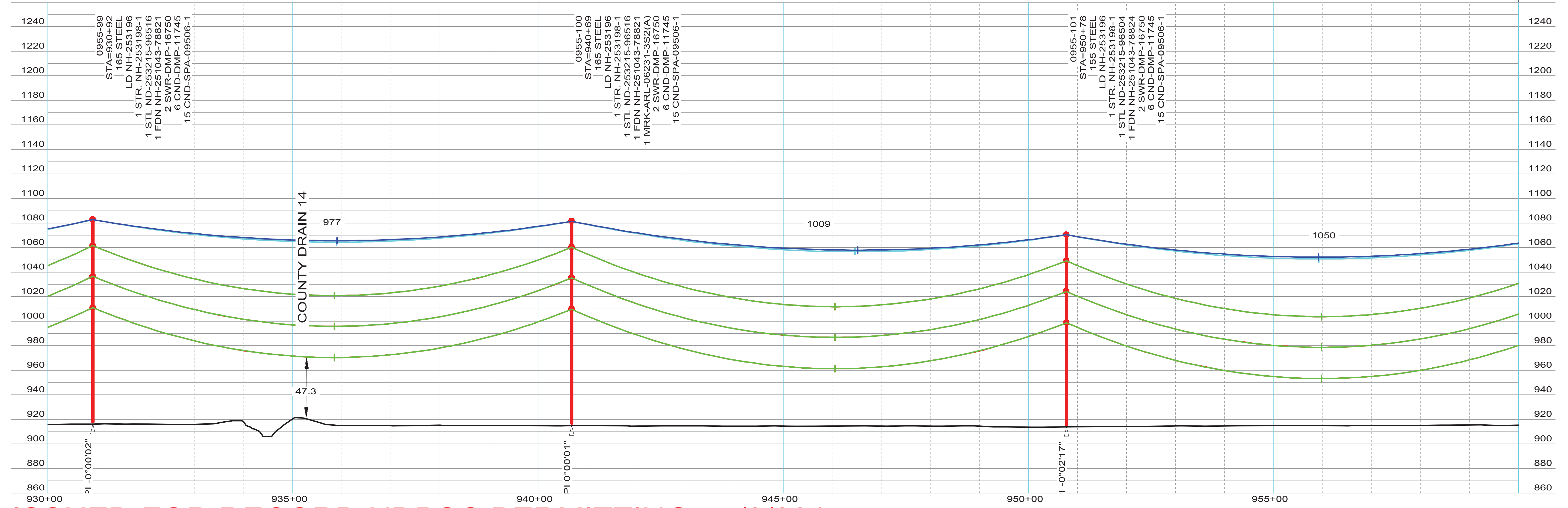
INTERNAL INFORMATION: DO NOT COPY OR DISTRIBUTE TO OTHERS WITHOUT EXPRESS WRITTEN CONSENT FROM XCEL ENERGY.

THIS MAP/DOCUMENT IS A TOOL TO ASSIST EMPLOYEES IN THE PERFORMANCE OF THEIR JOB'S. YOUR PERSONAL SAFETY IS PROVIDED FOR BY USING SAFETY PRACTICES, PROCEDURES AND EQUIPMENT AS DESCRIBED IN THE SAFETY TRAINING PROGRAMS, MANUALS AND SPAR'S.



LINE 0955 CENTERLINE  
 LINE 0955 CONDUCTOR (NO WIND)  
 LINE 0955 APPROX EASEMENT  
 EDGE OF ROAD ROW

STR - 89 TO STR - 114  
 COND: 6- 954 KCMIL ACSS/TW 20/7 @ 10340# D.T., RS = 1063FT (NORTH SIDE)  
 OPGW: 1- AC-26/57/635-48 FIBER @ 7315# D.T., RS = 1063FT (NORTH SIDE)  
 COND SAG TABLE NH-257384, OPGW SHIELD SAG TABLE NH-257385  
 COND SHOWN AT 392 DEG. FINAL, SHIELD(S) SHOWN AT -20 DEG. INITIAL

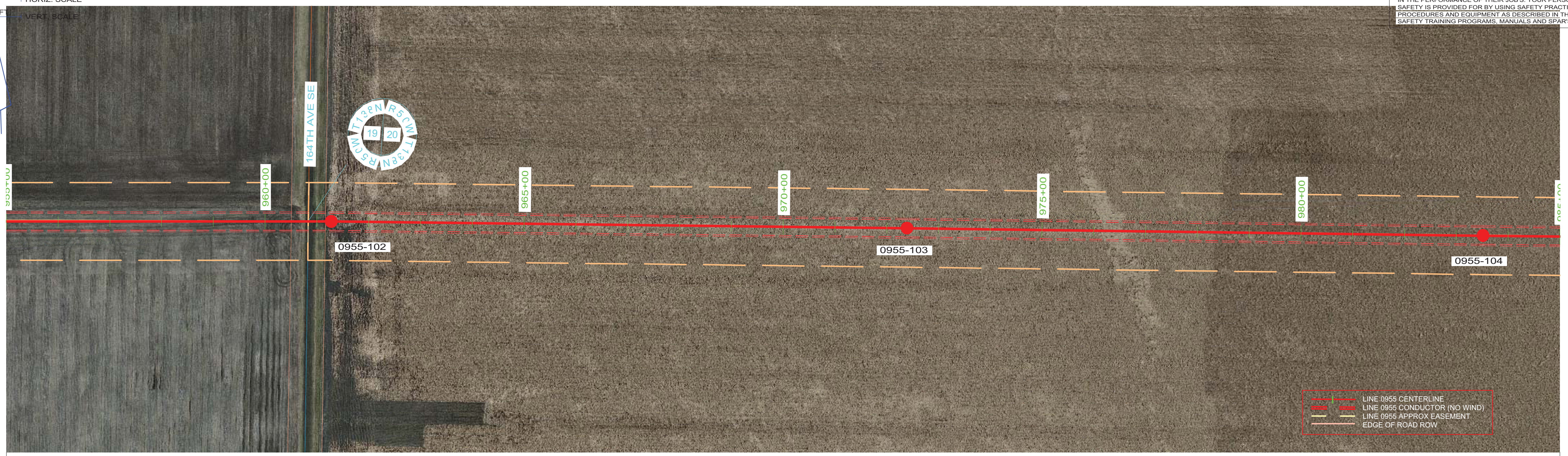
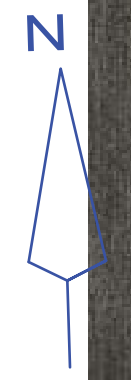


ISSUED FOR RECORD NDPSC PERMITTING - 5/8/2015

INTERNAL INFORMATION: DO NOT COPY OR DISTRIBUTE TO OTHERS WITHOUT EXPRESS WRITTEN CONSENT FROM XCEL ENERGY.

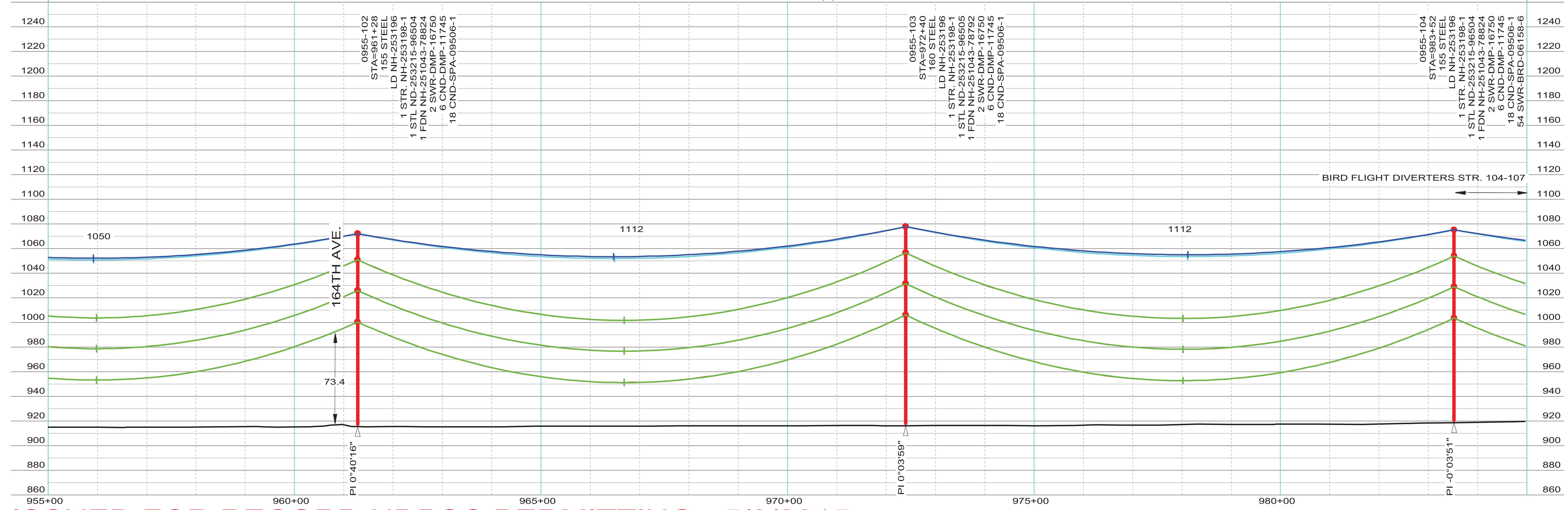
THIS MAP/DOCUMENT IS A TOOL TO ASSIST EMPLOYEES IN THE PERFORMANCE OF THEIR JOB'S. YOUR PERSONAL SAFETY IS PROVIDED FOR BY USING SAFETY PRACTICES, PROCEDURES AND EQUIPMENT AS DESCRIBED IN THE SAFETY TRAINING PROGRAMS, MANUALS AND SPARS.

100.0 FT. HORIZ. SCALE  
40.0 FT. VERT. SCALE



LINE 0955 CENTERLINE  
LINE 0955 CONDUCTOR (NO WIND)  
LINE 0955 APPROX EASEMENT  
EDGE OF ROAD ROW

STR - 89 TO STR - 114  
COND: 6- 954 KCMIL ACSS/TW 20/7 @ 10340# D.T., RS = 1063FT (NORTH SIDE)  
OPGW: 1- AC-26/57/635-48 FIBER @ 7315# D.T., RS = 1063FT (NORTH SIDE)  
COND SAG TABLE NH-257384, OPGW SHIELD SAG TABLE NH-257385  
COND SHOWN AT 392 DEG. FINAL, SHIELD(S) SHOWN AT -20 DEG. INITIAL



ISSUED FOR RECORD NDPSC PERMITTING - 5/8/2015

INTERNAL INFORMATION: DO NOT COPY OR DISTRIBUTE TO OTHERS WITHOUT EXPRESS WRITTEN CONSENT FROM XCEL ENERGY.