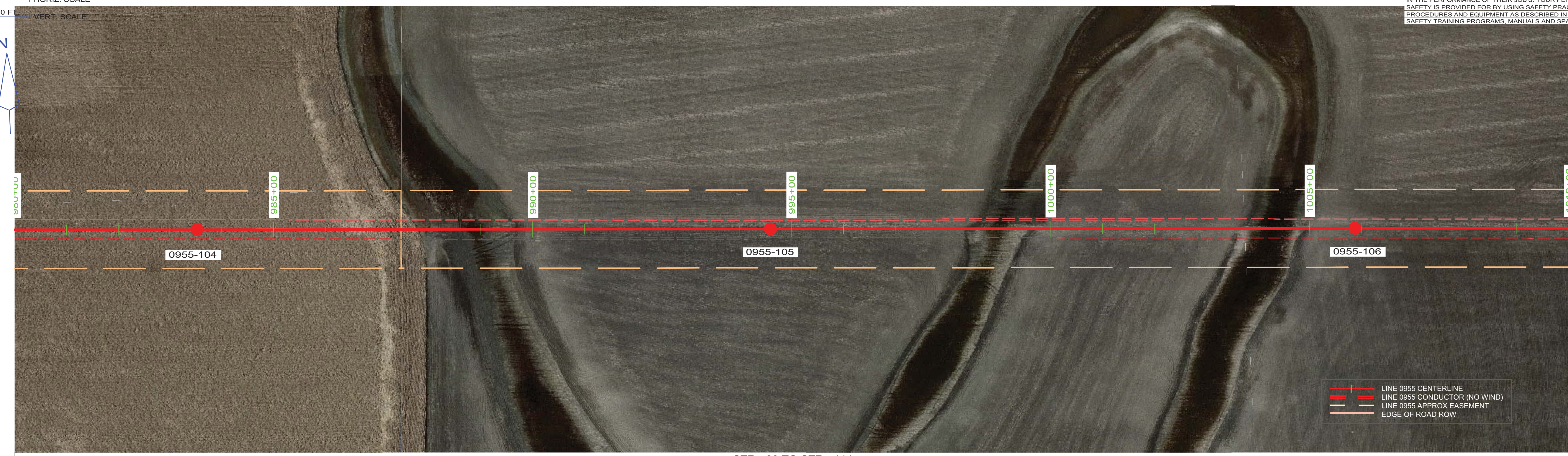
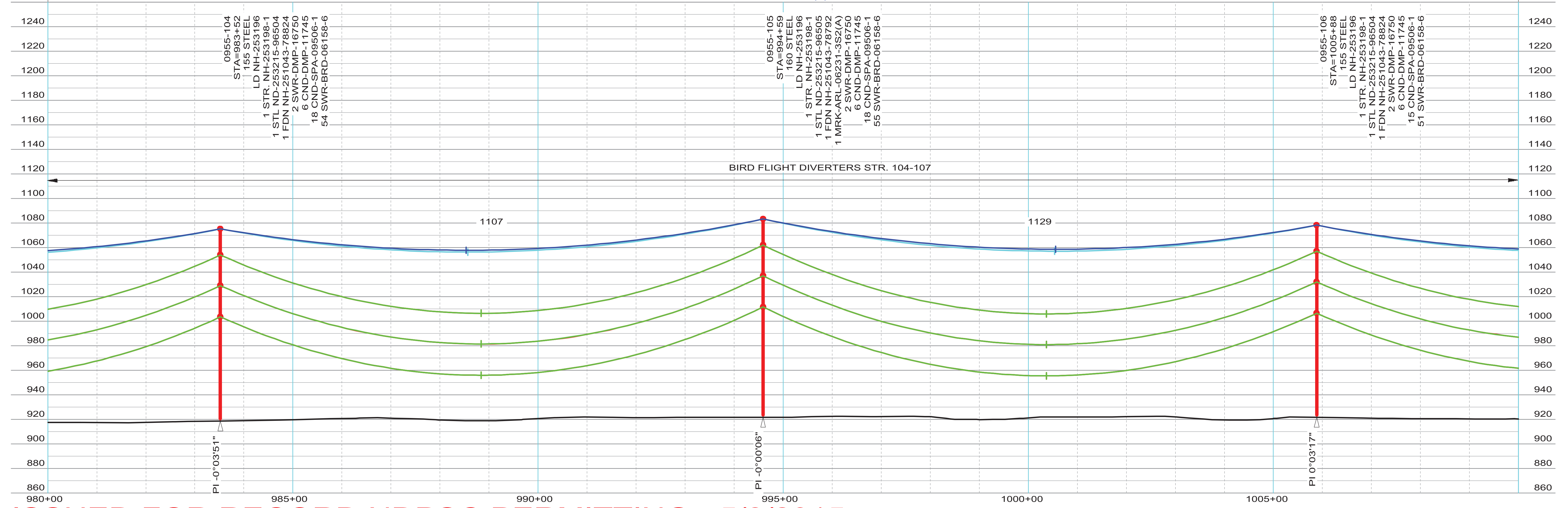


THIS MAP/DOCUMENT IS A TOOL TO ASSIST EMPLOYEES IN THE PERFORMANCE OF THEIR JOB'S. YOUR PERSONAL SAFETY IS PROVIDED FOR BY USING SAFETY PRACTICES, PROCEDURES AND EQUIPMENT AS DESCRIBED IN THE SAFETY TRAINING PROGRAMS, MANUALS AND SPARS.

100.0 FT. HORIZ. SCALE  
40.0 FT. VERT. SCALE



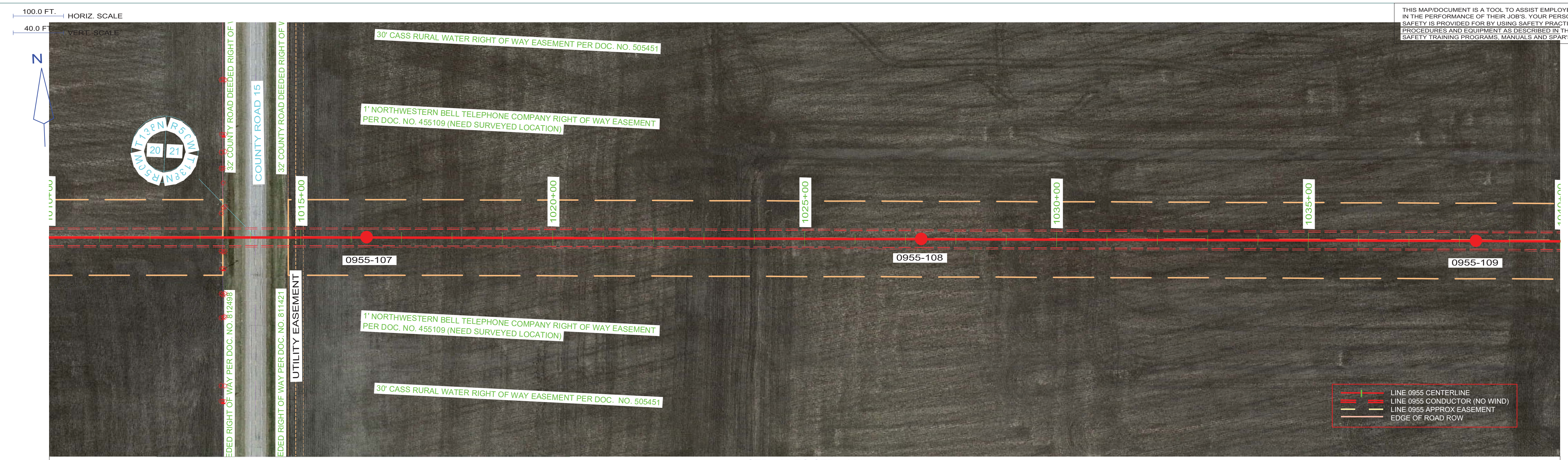
STR - 89 TO STR - 114  
COND: 6- 954 KCMIL ACSS/TW 20/7 @ 10340# D.T., RS = 1063FT (NORTH SIDE)  
OPGW: 1- AC-26/57/635-48 FIBER @ 7315# D.T., RS = 1063FT (NORTH SIDE)  
COND SAG TABLE NH-257384, OPGW SHIELD SAG TABLE NH-257385  
COND SHOWN AT 392 DEG. FINAL, SHIELD(S) SHOWN AT -20 DEG. INITIAL



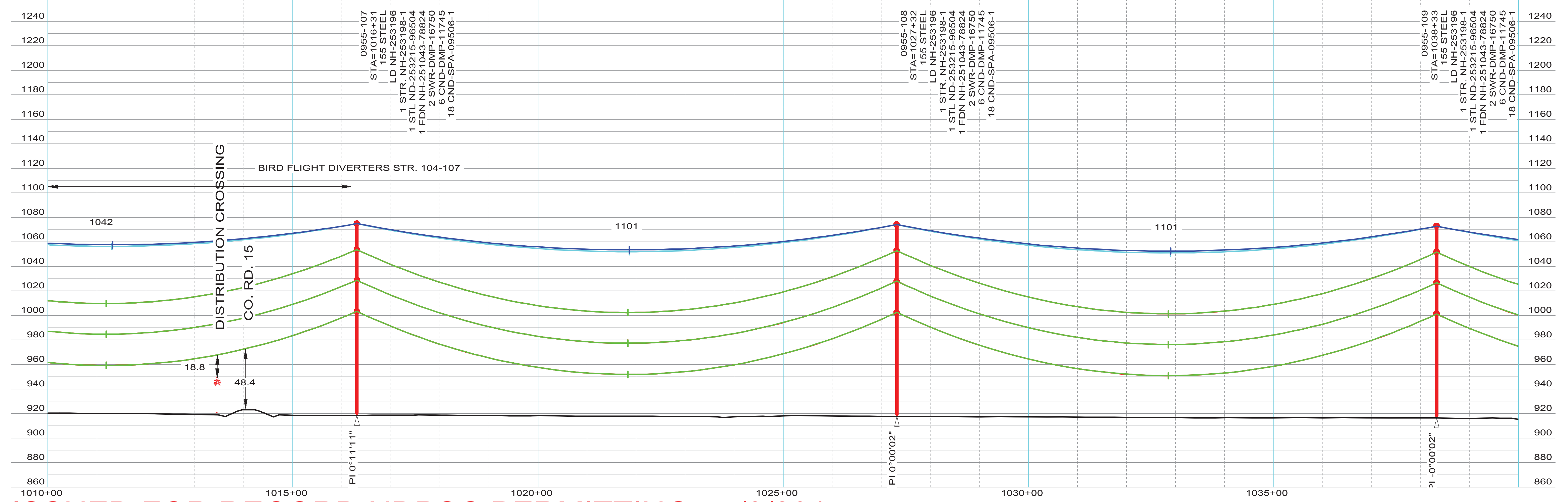
**ISSUED FOR RECORD NDPSC PERMITTING - 5/8/2015**

INTERNAL INFORMATION: DO NOT COPY OR DISTRIBUTE TO OTHERS WITHOUT EXPRESS WRITTEN CONSENT FROM XCEL ENERGY.

THIS MAP/DOCUMENT IS A TOOL TO ASSIST EMPLOYEES IN THE PERFORMANCE OF THEIR JOB'S. YOUR PERSONAL SAFETY IS PROVIDED FOR BY USING SAFETY PRACTICES, PROCEDURES AND EQUIPMENT AS DESCRIBED IN THE SAFETY TRAINING PROGRAMS, MANUALS AND SPARS.



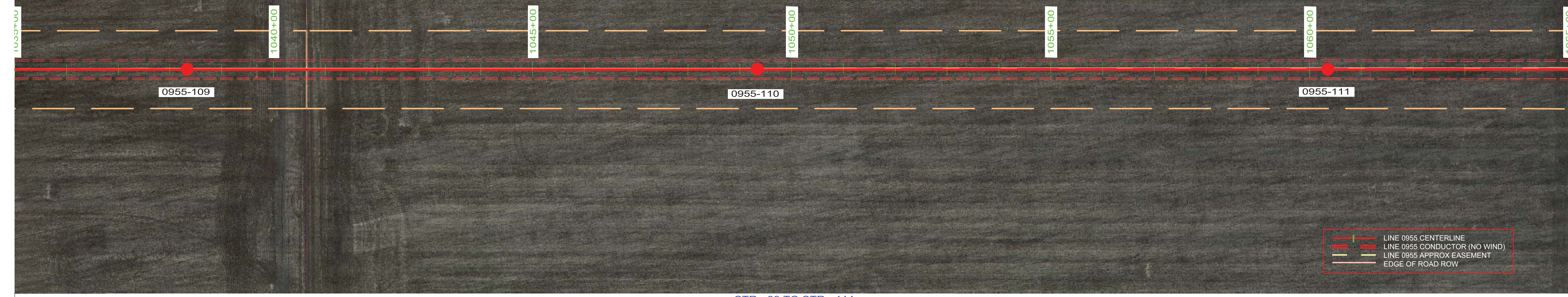
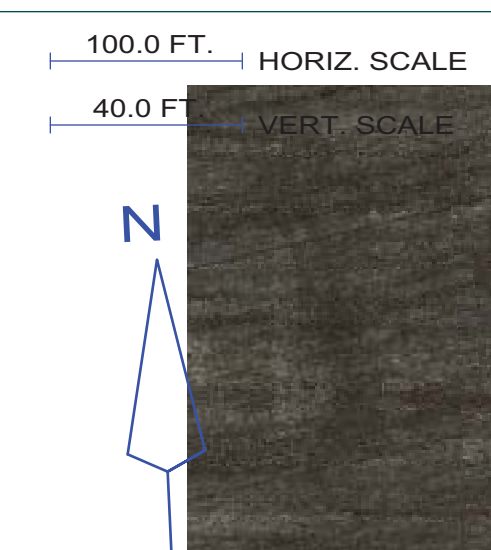
STR - 89 TO STR - 114  
 COND: 6- 954 KCMIL ACSS/TW 20/7 @ 10340# D.T., RS = 1063FT (NORTH SIDE)  
 OPGW: 1- AC-26/57/635-48 FIBER @ 7315# D.T., RS = 1063FT (NORTH SIDE)  
 COND SAG TABLE NH-257384, OPGW SHIELD SAG TABLE NH-257385  
 COND SHOWN AT 392 DEG. FINAL, SHIELD(S) SHOWN AT -20 DEG. INITIAL



ISSUED FOR RECORD NDPSC PERMITTING - 5/8/2015

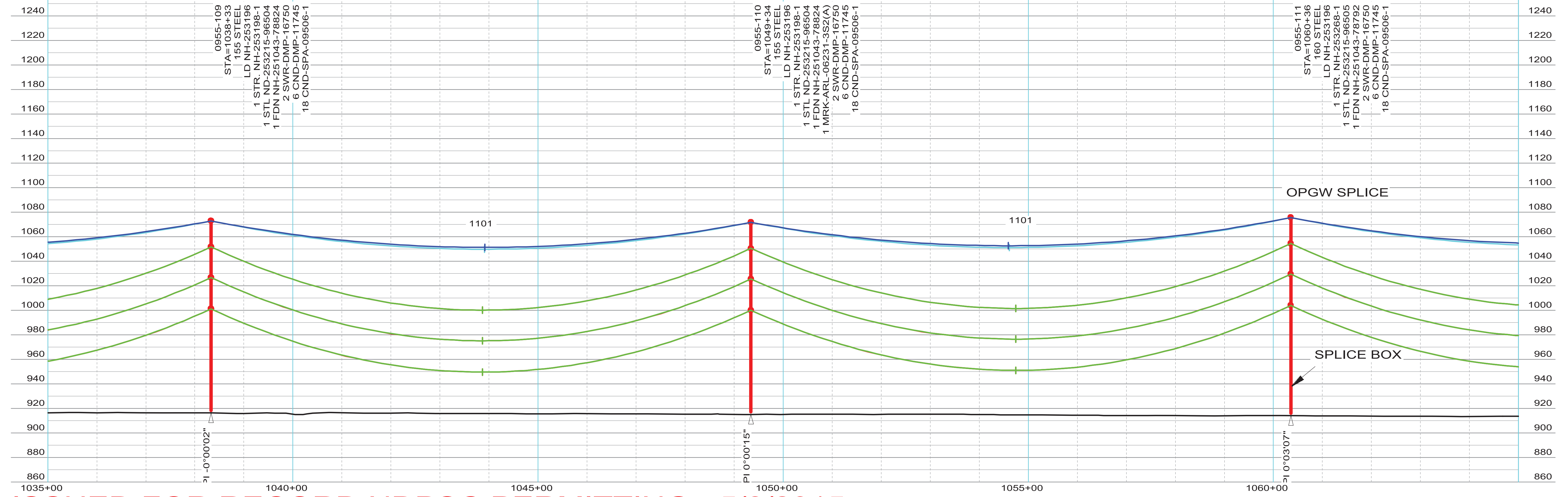
INTERNAL INFORMATION: DO NOT COPY OR DISTRIBUTE TO OTHERS WITHOUT EXPRESS WRITTEN CONSENT FROM XCEL ENERGY.

THIS MAP/DOCUMENT IS A TOOL TO ASSIST EMPLOYEES IN THE PERFORMANCE OF THEIR JOB'S. YOUR PERSONAL SAFETY IS PROVIDED FOR BY USING SAFETY PRACTICES, PROCEDURES AND EQUIPMENT AS DESCRIBED IN THE SAFETY TRAINING PROGRAMS, MANUALS AND SPARS.



- LINE 0955 CENTERLINE
- LINE 0955 CONDUCTOR (NO WIND)
- LINE 0955 APPROX EASEMENT
- EDGE OF ROAD ROW

STR - 89 TO STR - 114  
 COND: 6- 954 KCMIL ACSS/TW 20/7 @ 10340# D.T., RS = 1063FT (NORTH SIDE)  
 OPGW: 1- AC-26/57/635-48 FIBER @ 7315# D.T., RS = 1063FT (NORTH SIDE)  
 COND SAG TABLE NH-257384, OPGW SHIELD SAG TABLE NH-257385  
 COND SHOWN AT 392 DEG. FINAL, SHIELD(S) SHOWN AT -20 DEG. INITIAL



ISSUED FOR RECORD NDPSC PERMITTING - 5/8/2015

INTERNAL INFORMATION: DO NOT COPY OR DISTRIBUTE TO OTHERS WITHOUT EXPRESS WRITTEN CONSENT FROM XCEL ENERGY.

ENGINEERING DEPARTMENT, MINNEAPOLIS, MN

Xcel Energy

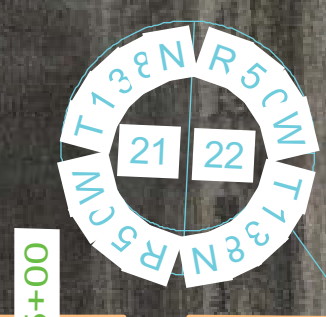
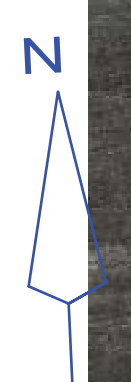
LINE NO. L0955

NH-253190-47

REV 1

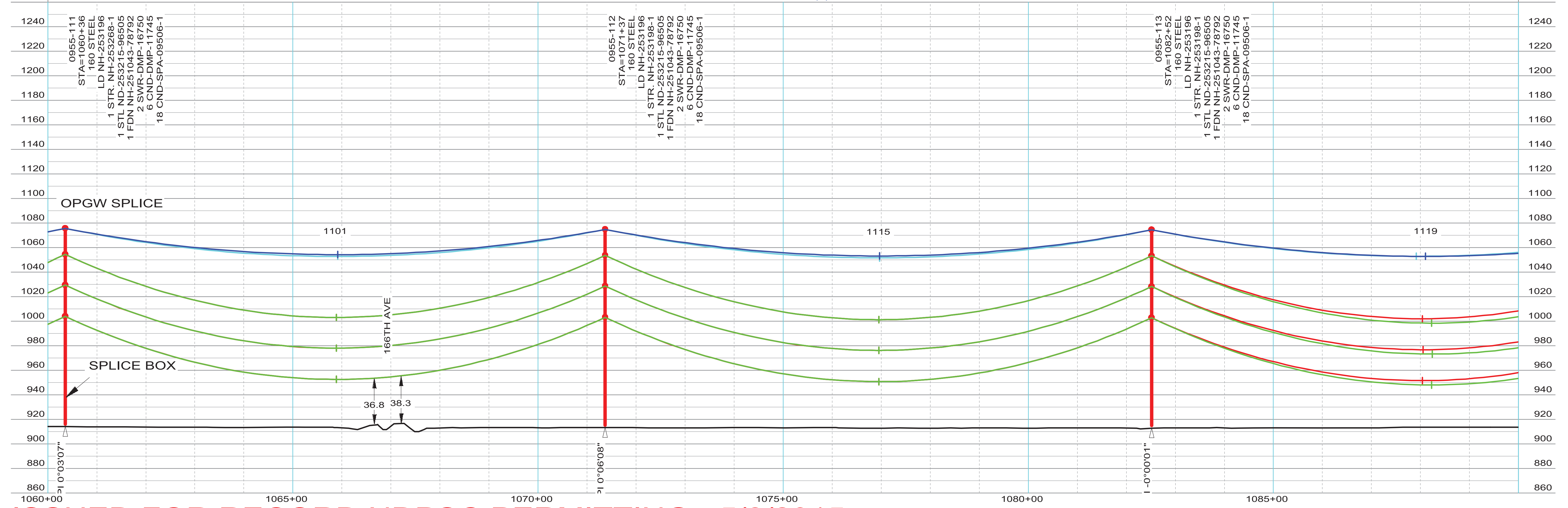
THIS MAP/DOCUMENT IS A TOOL TO ASSIST EMPLOYEES IN THE PERFORMANCE OF THEIR JOB'S. YOUR PERSONAL SAFETY IS PROVIDED FOR BY USING SAFETY PRACTICES, PROCEDURES AND EQUIPMENT AS DESCRIBED IN THE SAFETY TRAINING PROGRAMS, MANUALS AND SPARS.

100.0 FT. HORIZ. SCALE  
40.0 FT. VERT. SCALE



LINE 0955 CENTERLINE  
LINE 0955 CONDUCTOR (NO WIND)  
LINE 0955 APPROX EASEMENT  
EDGE OF ROAD ROW

STR - 89 TO STR - 114  
COND: 6- 954 KCMIL ACSS/TW 20/7 @ 10340# D.T., RS = 1063FT (NORTH SIDE)  
OPGW: 1- AC-26/57/635-48 FIBER @ 7315# D.T., RS = 1063FT (NORTH SIDE)  
COND SAG TABLE NH-257384, OPGW SHIELD SAG TABLE NH-257385  
COND SHOWN AT 392 DEG. FINAL, SHIELD(S) SHOWN AT -20 DEG. INITIAL



ISSUED FOR RECORD NDPSC PERMITTING - 5/8/2015

INTERNAL INFORMATION: DO NOT COPY OR DISTRIBUTE TO OTHERS WITHOUT EXPRESS WRITTEN CONSENT FROM XCEL ENERGY.

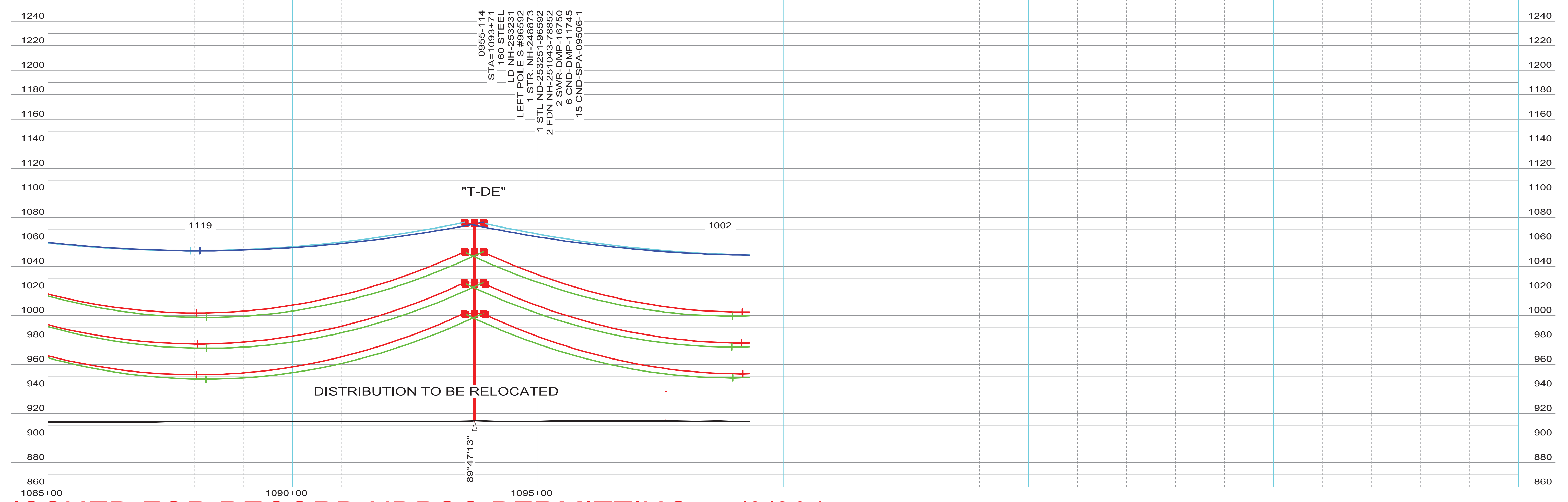
THIS MAP/DOCUMENT IS A TOOL TO ASSIST EMPLOYEES IN THE PERFORMANCE OF THEIR JOB'S. YOUR PERSONAL SAFETY IS PROVIDED FOR BY USING SAFETY PRACTICES, PROCEDURES AND EQUIPMENT AS DESCRIBED IN THE SAFETY TRAINING PROGRAMS, MANUALS AND SPARS.



LINE 0955 CENTERLINE  
 LINE 0955 CONDUCTOR (NO WIND)  
 LINE 0955 APPROX EASEMENT  
 EDGE OF ROAD ROW

STR - 89 TO STR - 114  
 COND: 6- 954 KCMIL ACSS/TW 20/7 @ 10340# D.T., RS = 1063FT (NORTH SIDE)  
 OPGW: 1- AC-26/57/635-48 FIBER @ 7315# D.T., RS = 1063FT (NORTH SIDE)  
 COND SAG TABLE NH-257384, OPGW SHIELD SAG TABLE NH-257385  
 COND SHOWN AT 392 DEG. FINAL, SHIELD(S) SHOWN AT -20 DEG. INITIAL

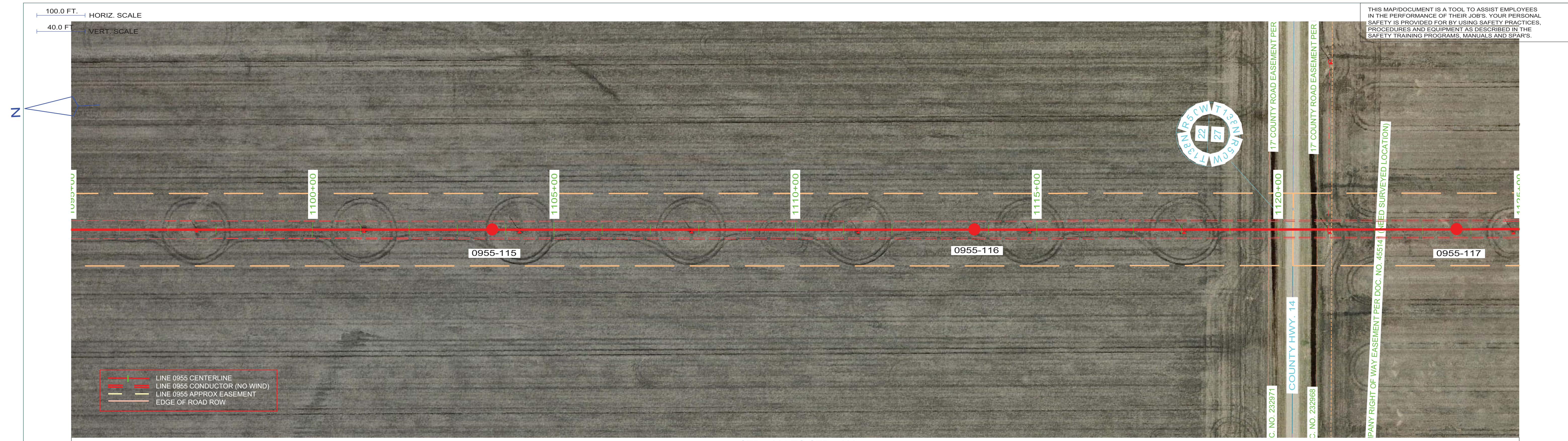
STR - 114 TO STR - 133  
 COND: 6- 954 KCMIL ACSS/TW 20/7 @ 10135# D.T., RS = 991FT (EAST SIDE)  
 OPGW: 1- AC-26/57/635-48 FIBER @ 7160# D.T., RS = 991FT (EAST SIDE)  
 COND SAG TABLE NH-257384, OPGW SHIELD SAG TABLE NH-257385  
 COND SHOWN AT 392 DEG. FINAL, SHIELD(S) SHOWN AT -20 DEG. INITIAL



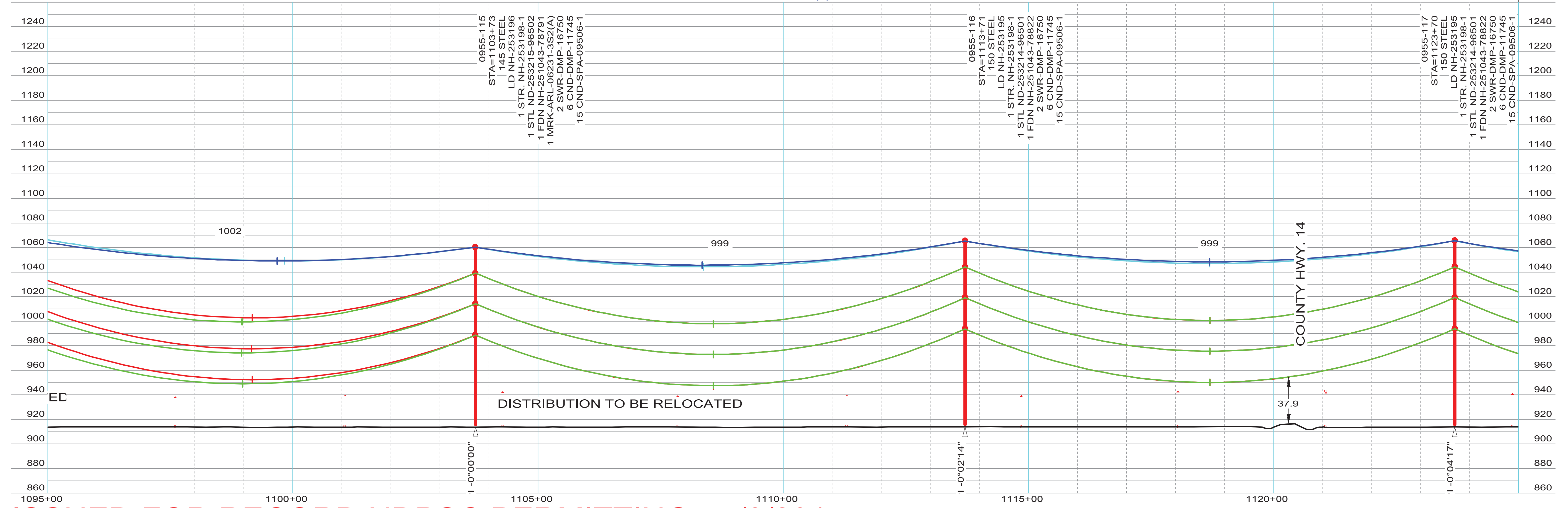
**ISSUED FOR RECORD NDPSC PERMITTING - 5/8/2015**

INTERNAL INFORMATION: DO NOT COPY OR DISTRIBUTE TO OTHERS WITHOUT EXPRESS WRITTEN CONSENT FROM XCEL ENERGY.

THIS MAP/DOCUMENT IS A TOOL TO ASSIST EMPLOYEES IN THE PERFORMANCE OF THEIR JOB'S. YOUR PERSONAL SAFETY IS PROVIDED FOR BY USING SAFETY PRACTICES, PROCEDURES AND EQUIPMENT AS DESCRIBED IN THE SAFETY TRAINING PROGRAMS, MANUALS AND SPARS.



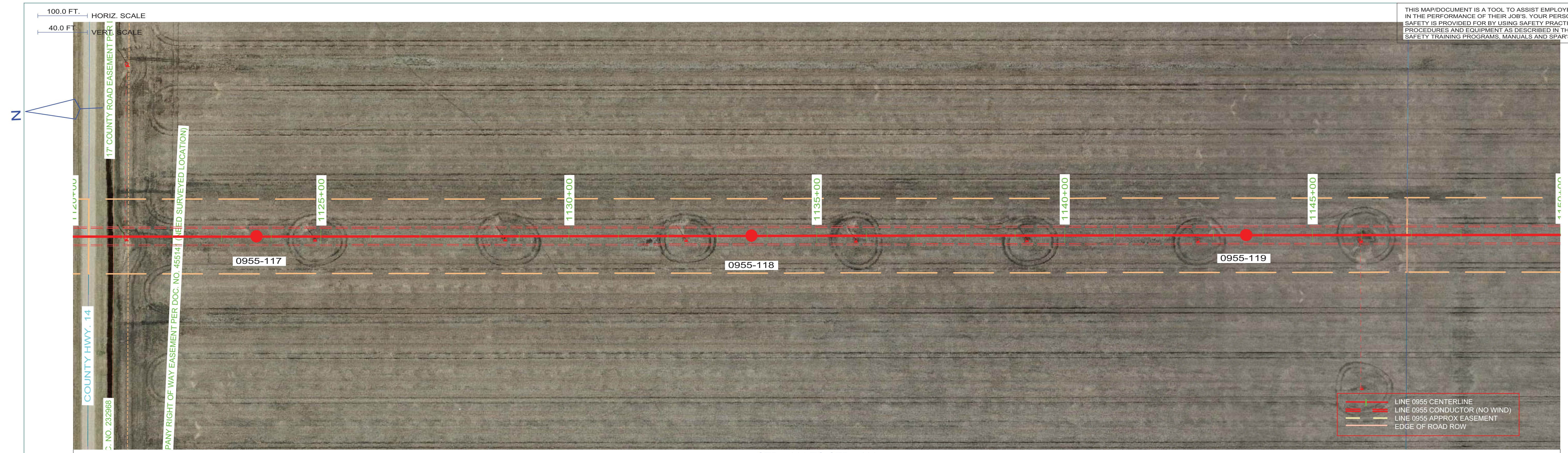
STR - 114 TO STR - 133  
 COND: 6- 954 KCMIL ACSS/TW 20/7 @ 10135# D.T., RS = 991FT (EAST SIDE)  
 OPGW: 1- AC-26/57/635-48 FIBER @ 7160# D.T., RS = 991FT (EAST SIDE)  
 COND SAG TABLE NH-257384, OPGW SHIELD SAG TABLE NH-257385  
 COND SHOWN AT 392 DEG. FINAL, SHIELD(S) SHOWN AT -20 DEG. INITIAL



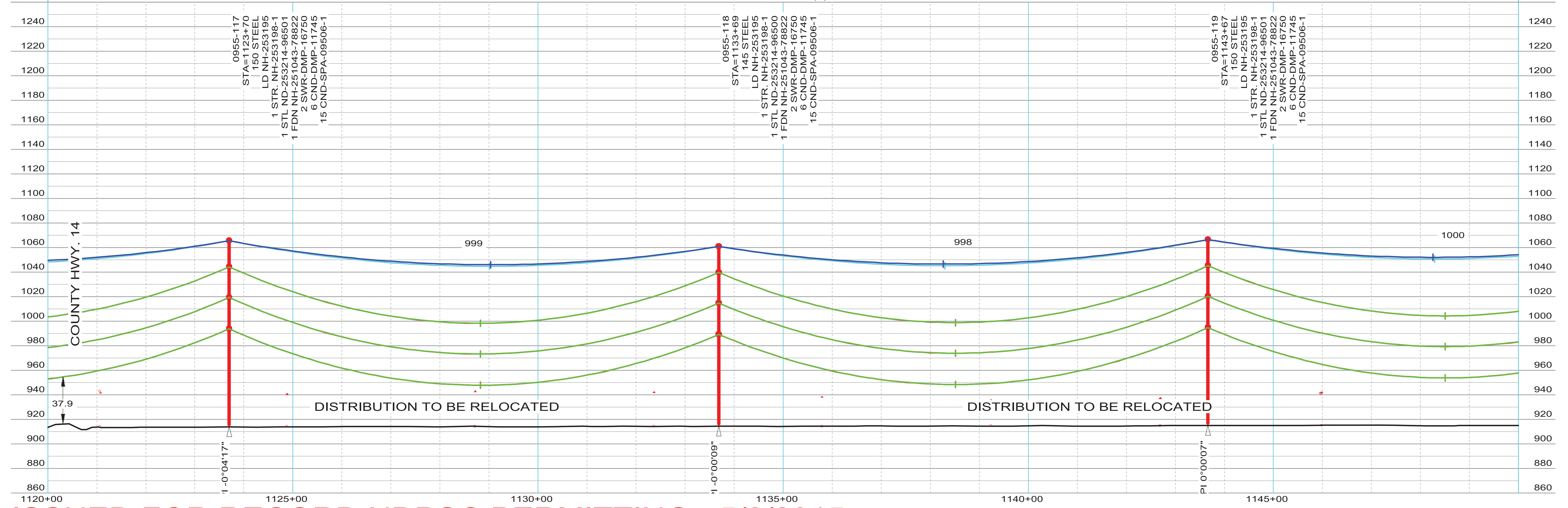
ISSUED FOR RECORD NDPSC PERMITTING - 5/8/2015

INTERNAL INFORMATION: DO NOT COPY OR DISTRIBUTE TO OTHERS WITHOUT EXPRESS WRITTEN CONSENT FROM XCEL ENERGY.

THIS MAP/DOCUMENT IS A TOOL TO ASSIST EMPLOYEES IN THE PERFORMANCE OF THEIR JOB'S. YOUR PERSONAL SAFETY IS PROVIDED FOR BY USING SAFETY PRACTICES, PROCEDURES AND EQUIPMENT AS DESCRIBED IN THE SAFETY TRAINING PROGRAMS, MANUALS AND SPARS.



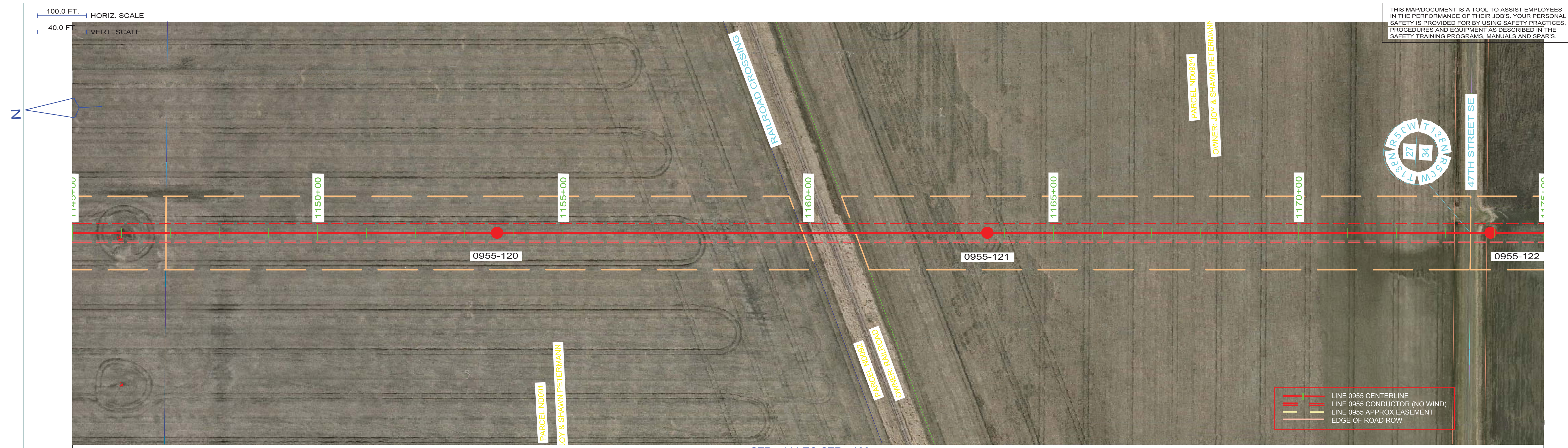
STR - 114 TO STR - 133  
 COND: 6- 954 KCMIL ACSS/TW 20/7 @ 10135# D.T., RS = 991FT (EAST SIDE)  
 OPGW: 1- AC-26/57/635-48 FIBER @ 7160# D.T., RS = 991FT (EAST SIDE)  
 COND SAG TABLE NH-257384, OPGW SHIELD SAG TABLE NH-257385  
 COND SHOWN AT 392 DEG. FINAL, SHIELD(S) SHOWN AT -20 DEG. INITIAL



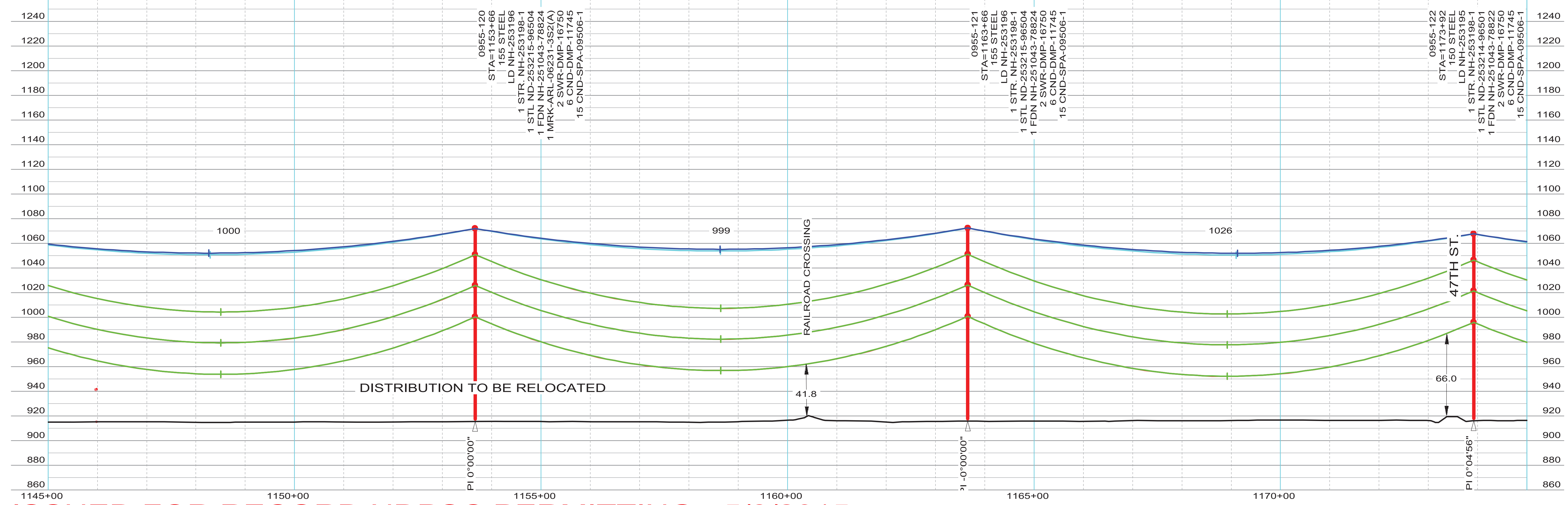
ISSUED FOR RECORD NDPSC PERMITTING - 5/8/2015

INTERNAL INFORMATION: DO NOT COPY OR DISTRIBUTE TO OTHERS WITHOUT EXPRESS WRITTEN CONSENT FROM XCEL ENERGY.

THIS MAP/DOCUMENT IS A TOOL TO ASSIST EMPLOYEES IN THE PERFORMANCE OF THEIR JOB'S. YOUR PERSONAL SAFETY IS PROVIDED FOR BY USING SAFETY PRACTICES, PROCEDURES AND EQUIPMENT AS DESCRIBED IN THE SAFETY TRAINING PROGRAMS, MANUALS AND SPARS.



STR - 114 TO STR - 133  
 COND: 6- 954 KCMIL ACSS/TW 20/7 @ 10135# D.T., RS = 991FT (EAST SIDE)  
 OPGW: 1- AC-26/57/635-48 FIBER @ 7160# D.T., RS = 991FT (EAST SIDE)  
 COND SAG TABLE NH-257384, OPGW SHIELD SAG TABLE NH-257385  
 COND SHOWN AT 392 DEG. FINAL, SHIELD(S) SHOWN AT -20 DEG. INITIAL



ISSUED FOR RECORD NDPSC PERMITTING - 5/8/2015

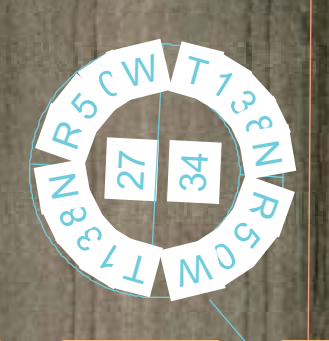
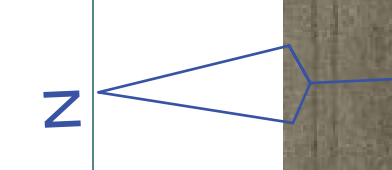
INTERNAL INFORMATION: DO NOT COPY OR DISTRIBUTE TO OTHERS WITHOUT EXPRESS WRITTEN CONSENT FROM XCEL ENERGY.

ENGINEERING DEPARTMENT, MINNEAPOLIS, MN  
Xcel Energy

LINE NO.	L0955	NH-253190-52	REV 1
----------	-------	--------------	-------

THIS MAP/DOCUMENT IS A TOOL TO ASSIST EMPLOYEES IN THE PERFORMANCE OF THEIR JOB'S. YOUR PERSONAL SAFETY IS PROVIDED FOR BY USING SAFETY PRACTICES, PROCEDURES AND EQUIPMENT AS DESCRIBED IN THE SAFETY TRAINING PROGRAMS, MANUALS AND SPARS.

100.0 FT. HORIZ. SCALE  
40.0 FT. VERT. SCALE

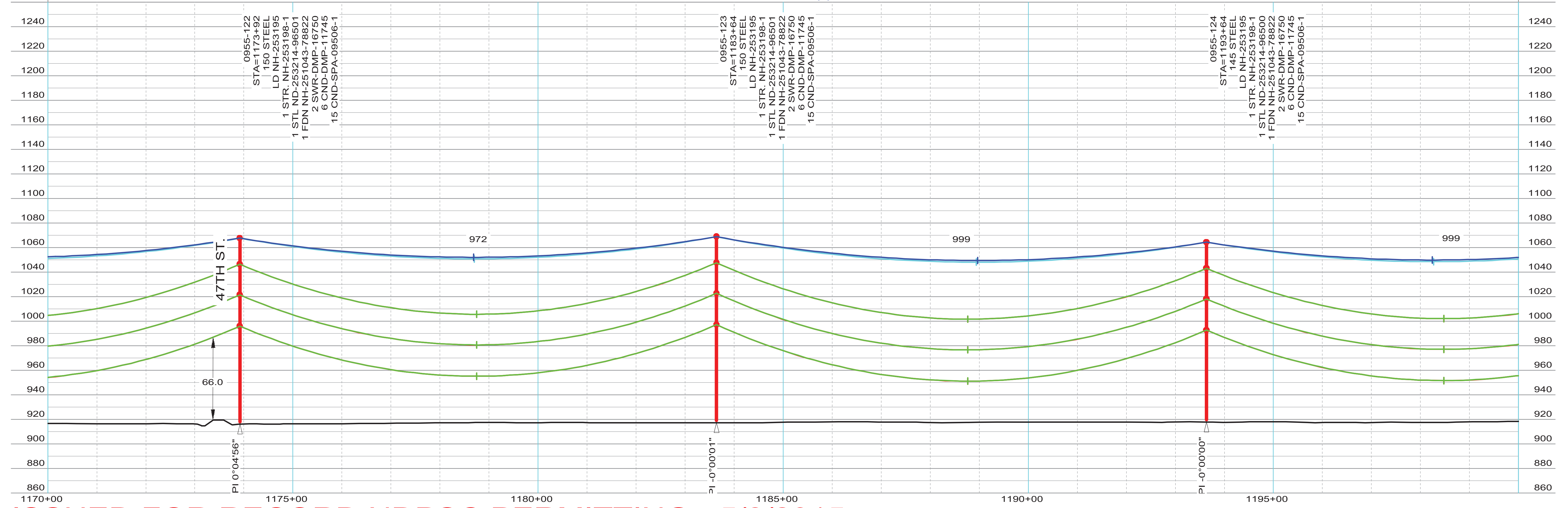


47TH STREET SE



LINE 0955 CENTERLINE  
LINE 0955 CONDUCTOR (NO WIND)  
LINE 0955 APPROX EASEMENT  
EDGE OF ROAD ROW

STR - 114 TO STR - 133  
COND: 6- 954 KCMIL ACSS/TW 20/7 @ 10135# D.T., RS = 991FT (EAST SIDE)  
OPGW: 1- AC-26/57/635-48 FIBER @ 7160# D.T., RS = 991FT (EAST SIDE)  
COND SAG TABLE NH-257384, OPGW SHIELD SAG TABLE NH-257385  
COND SHOWN AT 392 DEG. FINAL, SHIELD(S) SHOWN AT -20 DEG. INITIAL

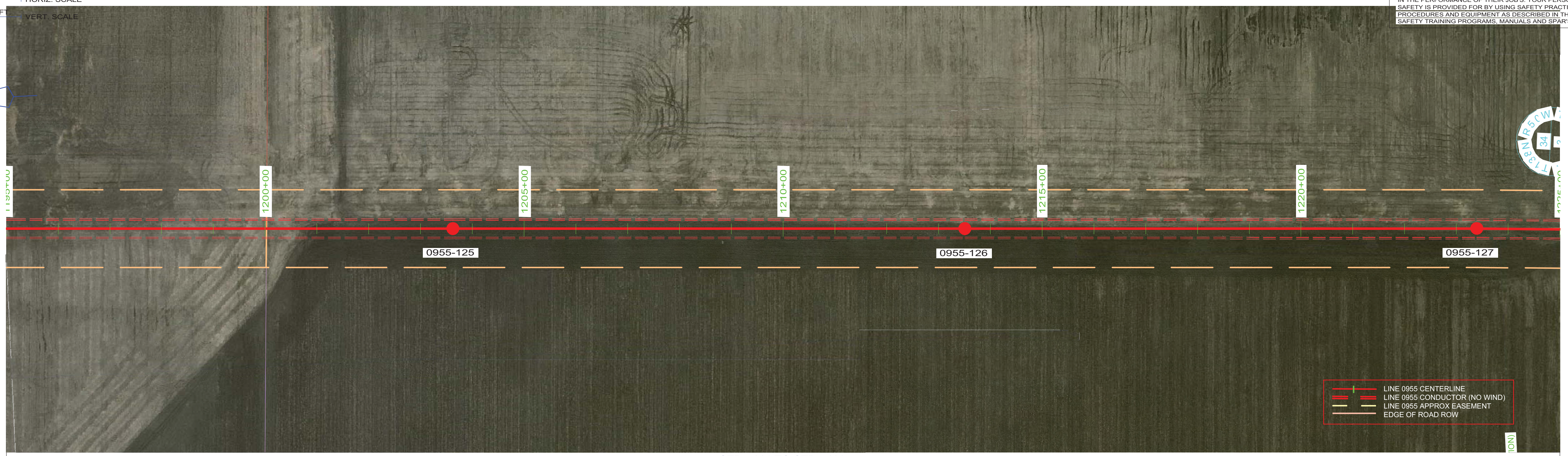
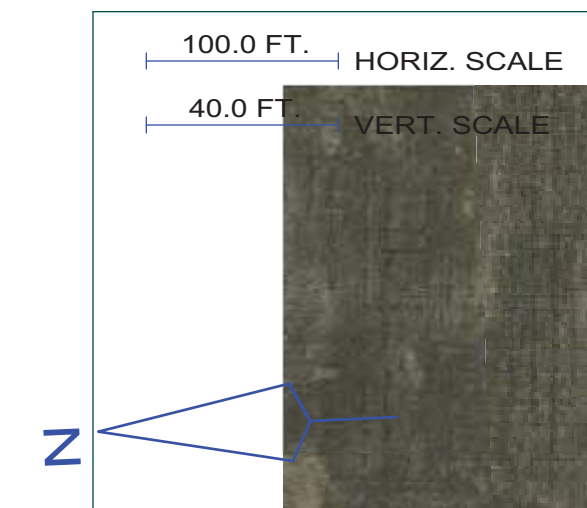


ISSUED FOR RECORD NDPSC PERMITTING - 5/8/2015

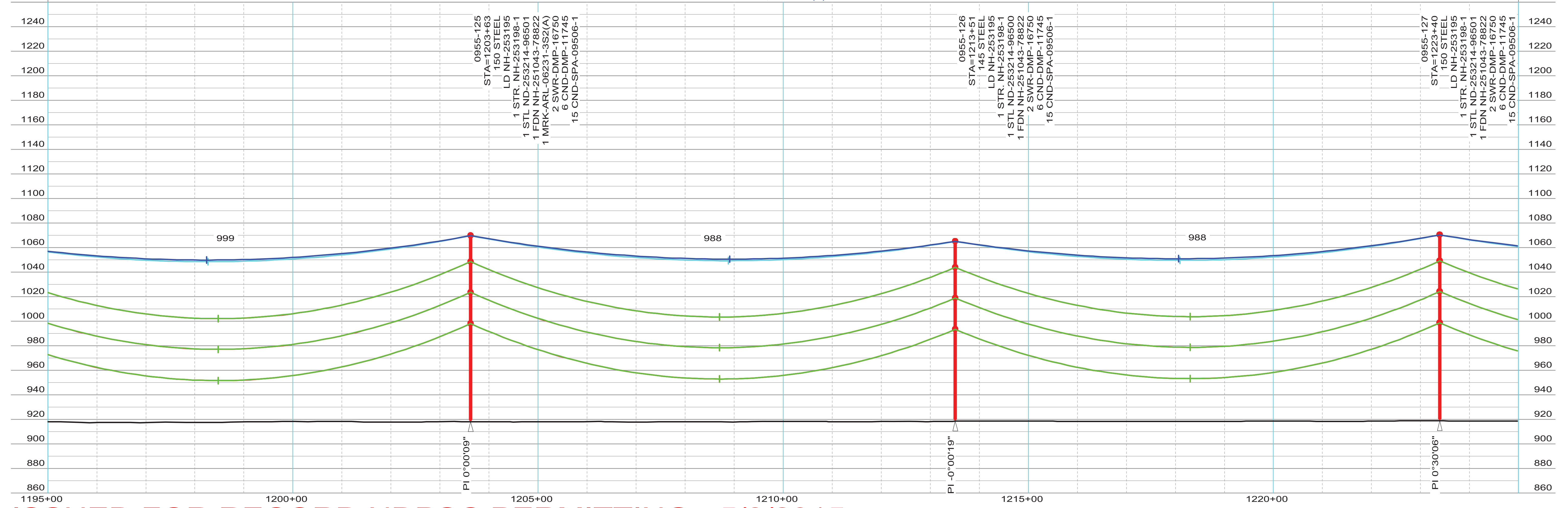
INTERNAL INFORMATION: DO NOT COPY OR DISTRIBUTE TO OTHERS WITHOUT EXPRESS WRITTEN CONSENT FROM XCEL ENERGY.

ENGINEERING DEPARTMENT, MINNEAPOLIS, MN	LINE NO. L0955	NH-253190-53	REV 1

THIS MAP/DOCUMENT IS A TOOL TO ASSIST EMPLOYEES IN THE PERFORMANCE OF THEIR JOB'S. YOUR PERSONAL SAFETY IS PROVIDED FOR BY USING SAFETY PRACTICES, PROCEDURES AND EQUIPMENT AS DESCRIBED IN THE SAFETY TRAINING PROGRAMS, MANUALS AND SPARS.



STR - 114 TO STR - 133  
COND: 6- 954 KCMIL ACSS/TW 20/7 @ 10135# D.T., RS = 991FT (EAST SIDE)  
OPGW: 1- AC-26/57/635-48 FIBER @ 7160# D.T., RS = 991FT (EAST SIDE)  
COND SAG TABLE NH-257384, OPGW SHIELD SAG TABLE NH-257385  
COND SHOWN AT 392 DEG. FINAL, SHIELD(S) SHOWN AT -20 DEG. INITIAL



ISSUED FOR RECORD NDPSC PERMITTING - 5/8/2015

INTERNAL INFORMATION: DO NOT COPY OR DISTRIBUTE TO OTHERS WITHOUT EXPRESS WRITTEN CONSENT FROM XCEL ENERGY.

ENGINEERING DEPARTMENT, MINNEAPOLIS, MN	LINE NO. L0955	NH-253190-54	REV 1