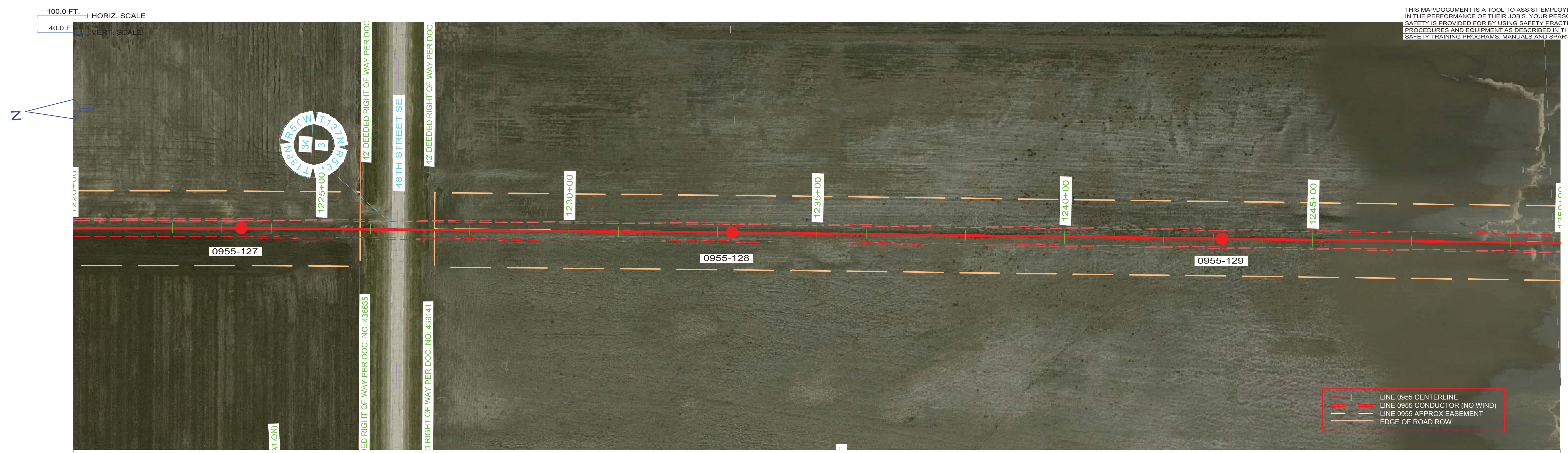
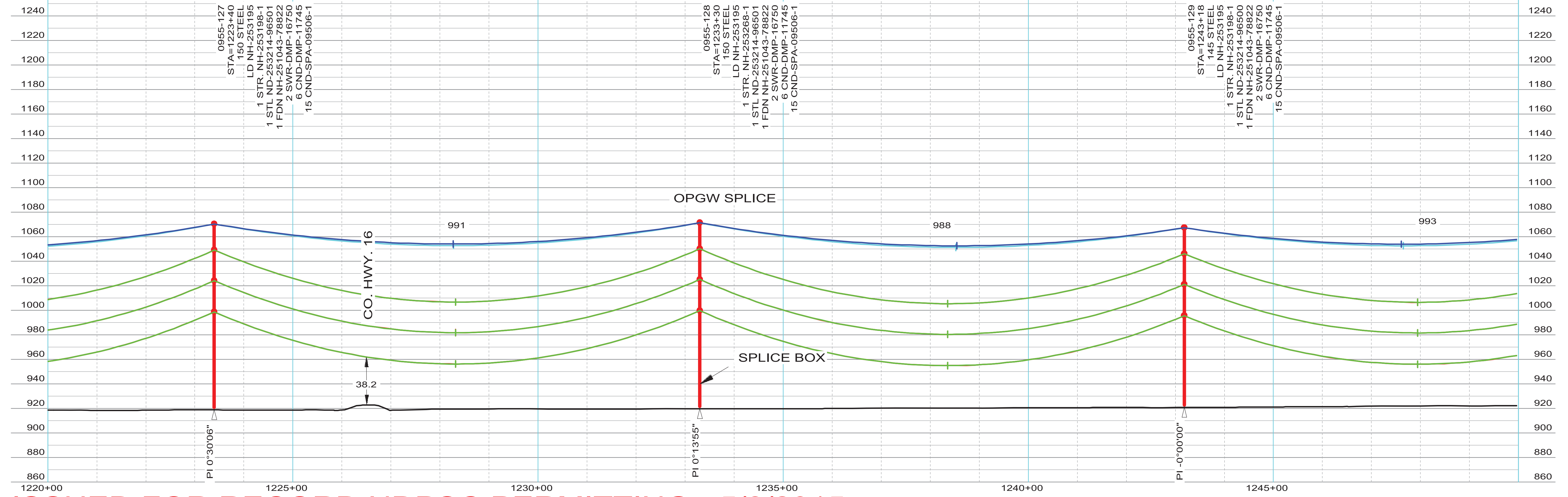


THIS MAP/DOCUMENT IS A TOOL TO ASSIST EMPLOYEES IN THE PERFORMANCE OF THEIR JOB'S. YOUR PERSONAL SAFETY IS PROVIDED FOR BY USING SAFETY PRACTICES, PROCEDURES AND EQUIPMENT AS DESCRIBED IN THE SAFETY TRAINING PROGRAMS, MANUALS AND SPARS.



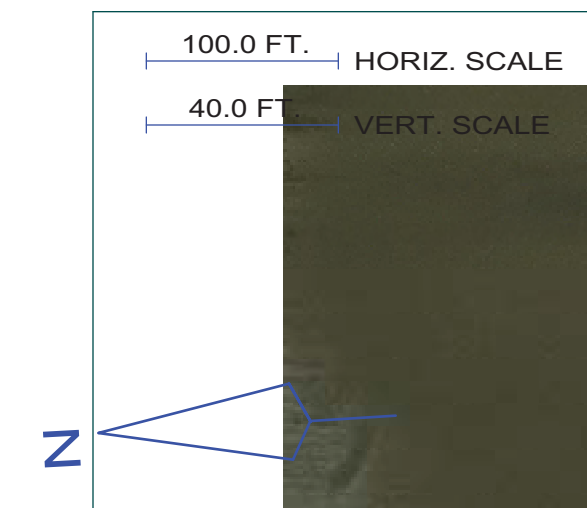
STR - 114 TO STR - 133  
 COND: 6- 954 KCMIL ACSS/TW 20/7 @ 10135# D.T., RS = 991FT (EAST SIDE)  
 OPGW: 1- AC-26/57/635-48 FIBER @ 7160# D.T., RS = 991FT (EAST SIDE)  
 COND SAG TABLE NH-257384, OPGW SHIELD SAG TABLE NH-257385  
 COND SHOWN AT 392 DEG. FINAL, SHIELD(S) SHOWN AT -20 DEG. INITIAL



ISSUED FOR RECORD NDPSC PERMITTING - 5/8/2015

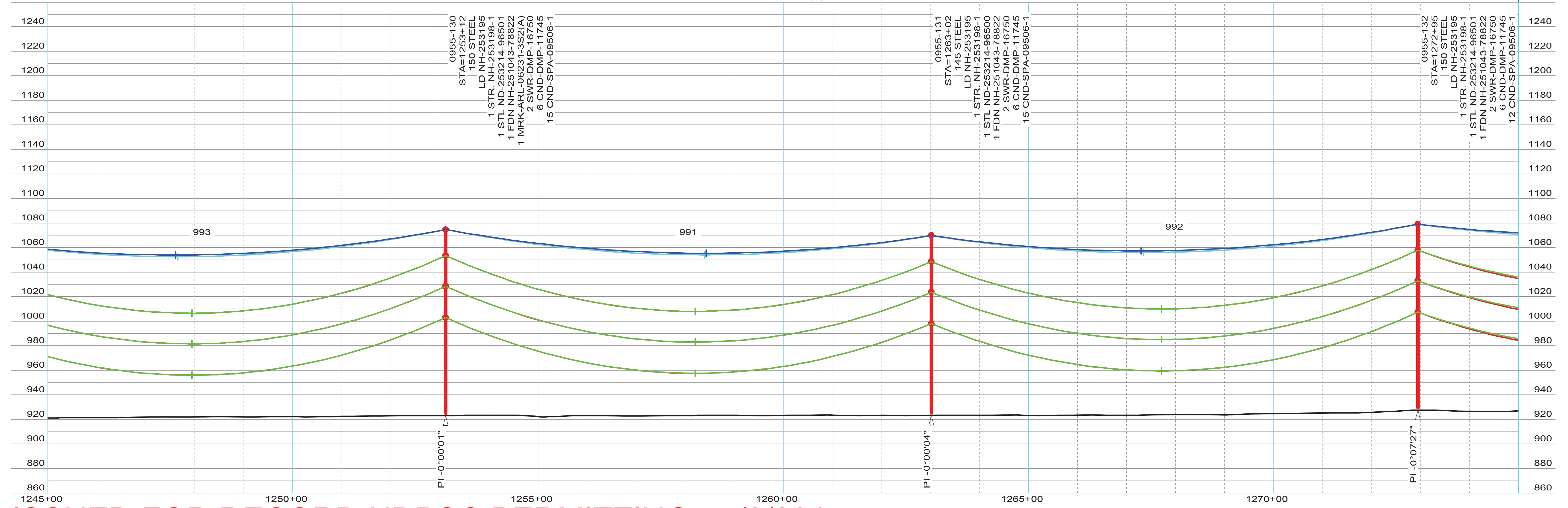
INTERNAL INFORMATION: DO NOT COPY OR DISTRIBUTE TO OTHERS WITHOUT EXPRESS WRITTEN CONSENT FROM XCEL ENERGY.

THIS MAP/DOCUMENT IS A TOOL TO ASSIST EMPLOYEES IN THE PERFORMANCE OF THEIR JOB'S. YOUR PERSONAL SAFETY IS PROVIDED FOR BY USING SAFETY PRACTICES, PROCEDURES AND EQUIPMENT AS DESCRIBED IN THE SAFETY TRAINING PROGRAMS, MANUALS AND SPARS.



— LINE 0955 CENTERLINE  
— LINE 0955 CONDUCTOR (NO WIND)  
— LINE 0955 APPROX EASEMENT  
— EDGE OF ROAD ROW

STR - 114 TO STR - 133  
COND: 6- 954 KCMIL ACSS/TW 20/7 @ 10135# D.T., RS = 991FT (EAST SIDE)  
OPGW: 1- AC-26/57/635-48 FIBER @ 7160# D.T., RS = 991FT (EAST SIDE)  
COND SAG TABLE NH-257384, OPGW SHIELD SAG TABLE NH-257385  
COND SHOWN AT 392 DEG. FINAL, SHIELD(S) SHOWN AT -20 DEG. INITIAL



0955-130  
STA=1253+12  
150 STEEL  
LD NH-253195  
1 STR. NH-253198-1  
1 STL ND-253214-96501  
1 FDN NH-251043-78822  
1 MRK-ARL-06231-3S2(A)  
2 SWR-DMP-16750  
6 CND-DMP-11745  
15 CND-SPA-09506-1

0955-131  
STA=1263+02  
145 STEEL  
LD NH-253195  
1 STR. NH-253198-1  
1 STL ND-253214-96500  
1 FDN NH-251043-78822  
2 SWR-DMP-16750  
6 CND-DMP-11745  
15 CND-SPA-09506-1

0955-132  
STA=1272+95  
150 STEEL  
LD NH-253195  
1 STR. NH-253198-1  
1 STL ND-253214-96501  
1 FDN NH-251043-78822  
2 SWR-DMP-16750  
6 CND-DMP-11745  
12 CND-SPA-09506-1

ISSUED FOR RECORD NDPSC PERMITTING - 5/8/2015

INTERNAL INFORMATION: DO NOT COPY OR DISTRIBUTE TO OTHERS WITHOUT EXPRESS WRITTEN CONSENT FROM XCEL ENERGY.

ENGINEERING DEPARTMENT, MINNEAPOLIS, MN  
Xcel Energy

LINE NO. L0955  
NH-253190-56  
REV 1

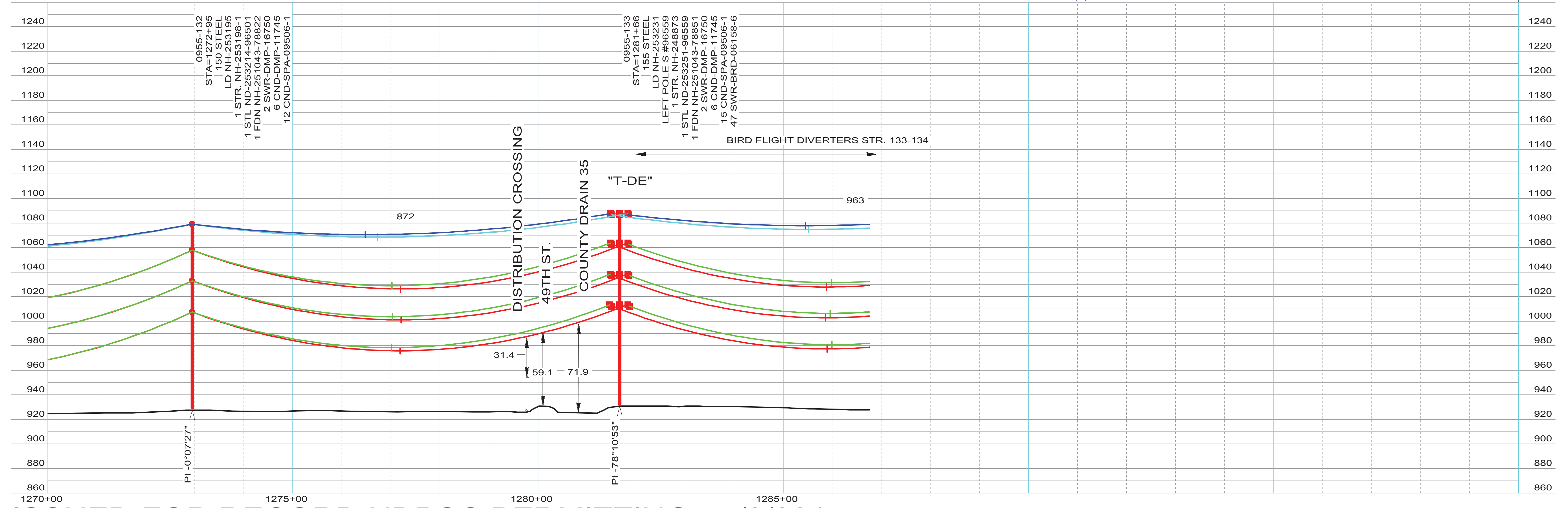
THIS MAP/DOCUMENT IS A TOOL TO ASSIST EMPLOYEES IN THE PERFORMANCE OF THEIR JOB'S. YOUR PERSONAL SAFETY IS PROVIDED FOR BY USING SAFETY PRACTICES, PROCEDURES AND EQUIPMENT AS DESCRIBED IN THE SAFETY TRAINING PROGRAMS, MANUALS AND SPARS.



- - - - - LINE 0955 CENTERLINE  
 - - - - - LINE 0955 CONDUCTOR (NO WIND)  
 - - - - - LINE 0955 APPROX EASEMENT  
 - - - - - EDGE OF ROAD ROW

STR - 114 TO STR - 133  
 COND: 6- 954 KCMIL ACSS/TW 20/7 @ 10135# D.T., RS = 991FT (EAST SIDE)  
 OPGW: 1- AC-26/57/635-48 FIBER @ 7160# D.T., RS = 991FT (EAST SIDE)  
 COND SAG TABLE NH-257384, OPGW SHIELD SAG TABLE NH-257385  
 COND SHOWN AT 392 DEG. FINAL, SHIELD(S) SHOWN AT -20 DEG. INITIAL

STR - 133 TO STR - 138  
 COND: 6- 954 KCMIL ACSS/TW 20/7 @ 9920# D.T., RS = 919FT (NORTH SIDE)  
 OPGW: 1- AC-26/57/635-48 FIBER @ 6980# D.T., RS = 918FT (NORTH SIDE)  
 COND SAG TABLE NH-257384, OPGW SHIELD SAG TABLE NH-257385  
 COND SHOWN AT 392 DEG. FINAL, SHIELD(S) SHOWN AT -20 DEG. INITIAL

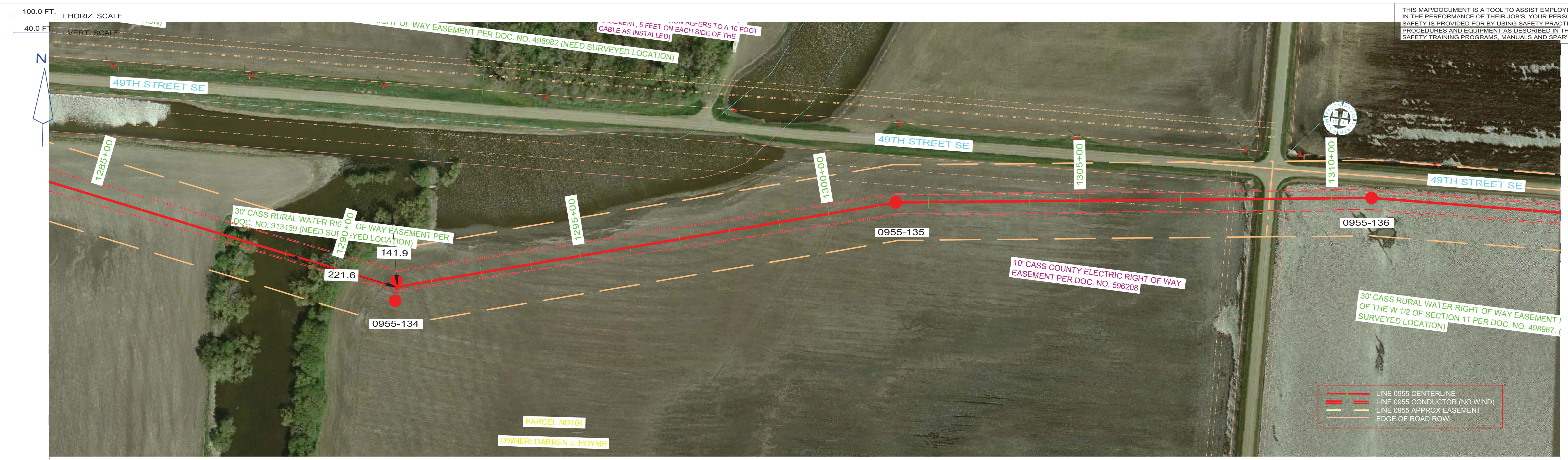


ISSUED FOR RECORD NDPSC PERMITTING - 5/8/2015

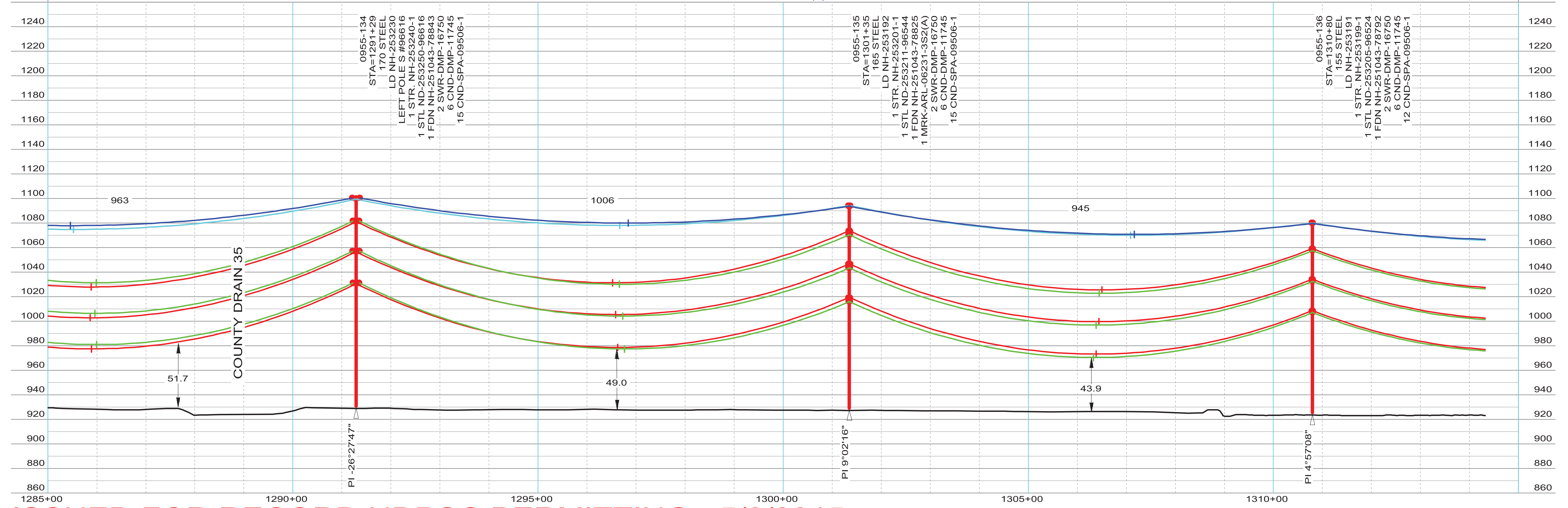
INTERNAL INFORMATION: DO NOT COPY OR DISTRIBUTE TO OTHERS WITHOUT EXPRESS WRITTEN CONSENT FROM XCEL ENERGY.

ENGINEERING DEPARTMENT, MINNEAPOLIS, MN  
 Xcel Energy  
 LINE NO. L0955  
 NH-253190-57  
 REV 1

THIS MAP/DRAWING IS A TOOL TO ASSIST EMPLOYEES IN THE PERFORMANCE OF THEIR JOB'S. YOUR PERSONAL SAFETY IS PROVIDED FOR BY USING SAFETY PRACTICES, PROCEDURES AND EQUIPMENT AS DESCRIBED IN THE SAFETY TRAINING PROGRAMS, MANUALS AND SPARS.



STR - 133 TO STR - 138  
 COND: 6- 954 KCMIL ACSS/TW 20/7 @ 9920# D.T., RS = 919FT (NORTH SIDE)  
 OPGW: 1- AC-26/57/635-48 FIBER @ 6980# D.T., RS = 918FT (NORTH SIDE)  
 COND SAG TABLE NH-257384, OPGW SHIELD SAG TABLE NH-257385  
 COND SHOWN AT 392 DEG. FINAL, SHIELD(S) SHOWN AT -20 DEG. INITIAL



ISSUED FOR RECORD NDPSC PERMITTING - 5/8/2015

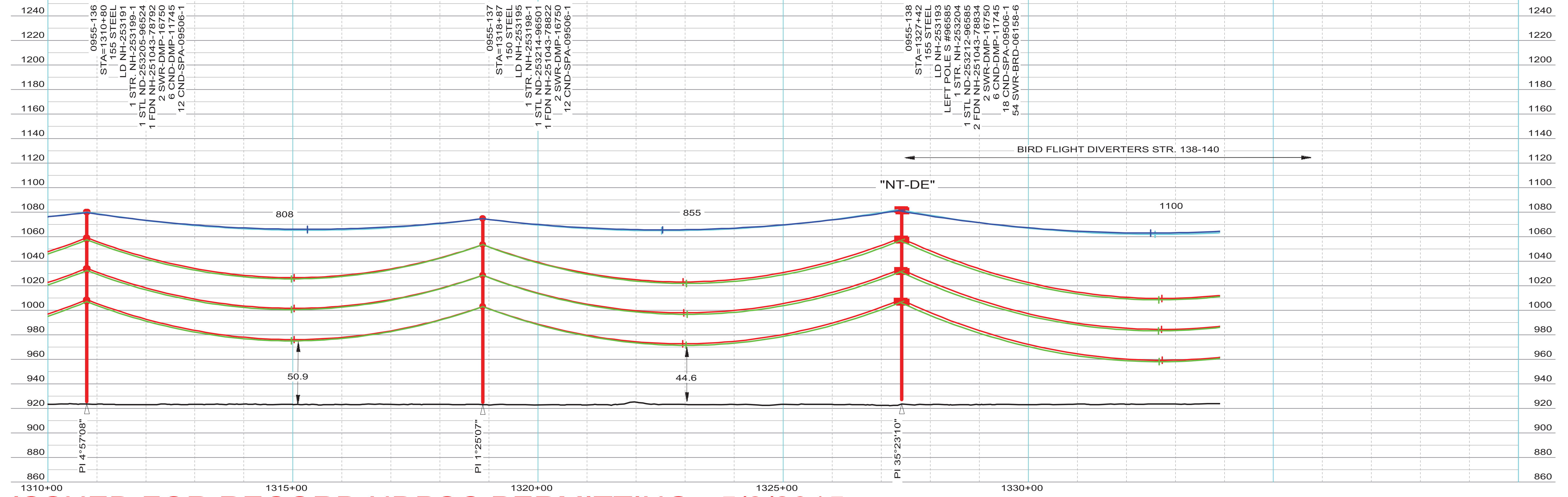
INTERNAL INFORMATION: DO NOT COPY OR DISTRIBUTE TO OTHERS WITHOUT EXPRESS WRITTEN CONSENT FROM XCEL ENERGY.

THIS MAP/DOCUMENT IS A TOOL TO ASSIST EMPLOYEES IN THE PERFORMANCE OF THEIR JOB'S. YOUR PERSONAL SAFETY IS PROVIDED FOR BY USING SAFETY PRACTICES, PROCEDURES AND EQUIPMENT AS DESCRIBED IN THE SAFETY TRAINING PROGRAMS, MANUALS AND SPARS.



STR - 133 TO STR - 138  
 COND: 6- 954 KCMIL ACSS/TW 20/7 @ 9920# D.T., RS = 919FT (NORTH SIDE)  
 OPGW: 1- AC-26/57/635-48 FIBER @ 6980# D.T., RS = 918FT (NORTH SIDE)  
 COND SAG TABLE NH-257384, OPGW SHIELD SAG TABLE NH-257385  
 COND SHOWN AT 392 DEG. FINAL, SHIELD(S) SHOWN AT -20 DEG. INITIAL

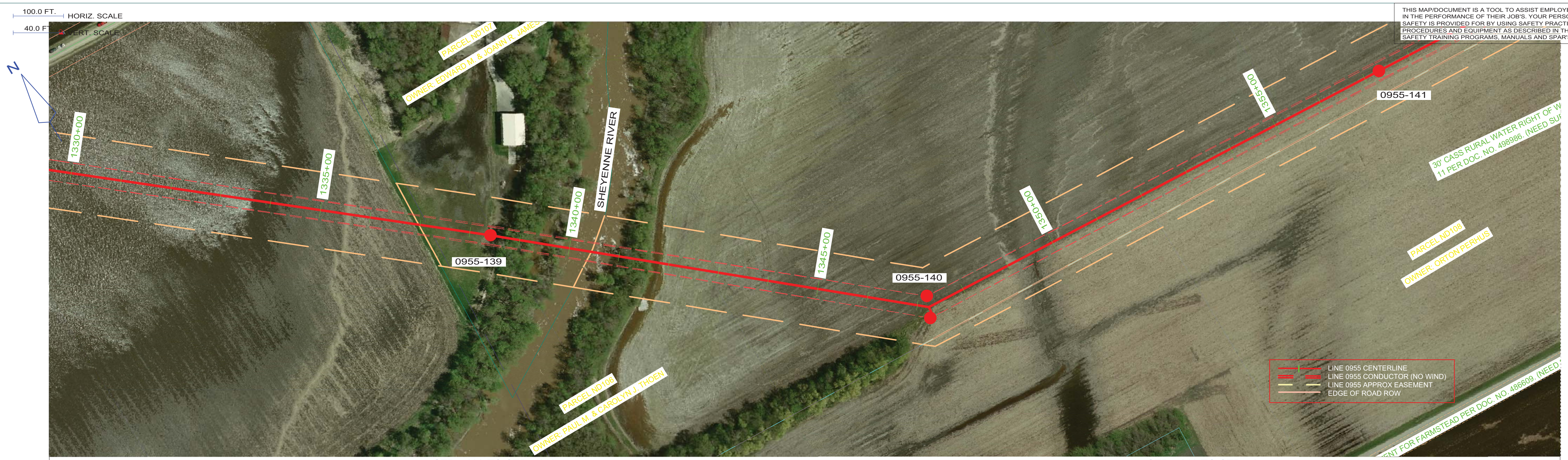
STR - 138 TO STR - 140  
 COND: 6- 954 KCMIL ACSS/TW 20/7 @ 10190# D.T., RS = 1009FT (EAST SIDE)  
 OPGW: 1- AC-26/57/635-48 FIBER @ 7195# D.T., RS = 1009FT (EAST SIDE)  
 COND SAG TABLE NH-257384, OPGW SHIELD SAG TABLE NH-257385  
 COND SHOWN AT 392 DEG. FINAL, SHIELD(S) SHOWN AT -20 DEG. INITIAL



ISSUED FOR RECORD NDPSC PERMITTING - 5/8/2015

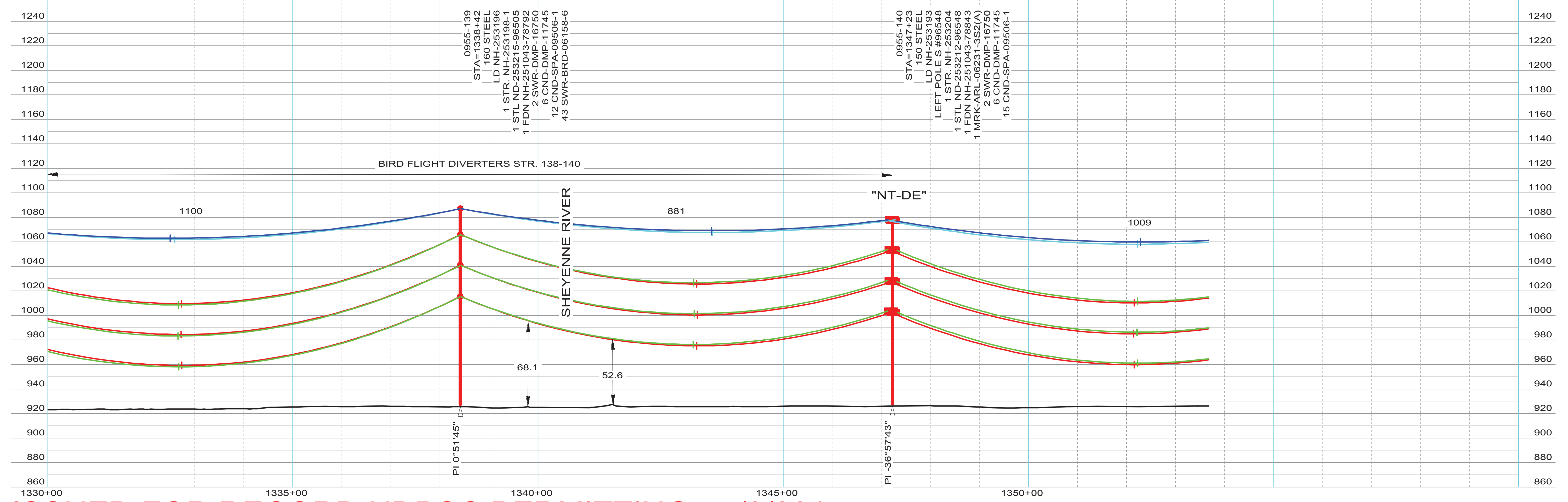
INTERNAL INFORMATION: DO NOT COPY OR DISTRIBUTE TO OTHERS WITHOUT EXPRESS WRITTEN CONSENT FROM XCEL ENERGY.

THIS MAP/DOCUMENT IS A TOOL TO ASSIST EMPLOYEES IN THE PERFORMANCE OF THEIR JOB'S. YOUR PERSONAL SAFETY IS PROVIDED FOR BY USING SAFETY PRACTICES, PROCEDURES AND EQUIPMENT AS DESCRIBED IN THE SAFETY TRAINING PROGRAMS, MANUALS AND SPARS.



STR - 138 TO STR - 140  
 COND: 6- 954 KCMIL ACSS/TW 20/7 @ 10190# D.T., RS = 1009FT (EAST SIDE)  
 OPGW: 1- AC-26/57/635-48 FIBER @ 7195# D.T., RS = 1009FT (EAST SIDE)  
 COND SAG TABLE NH-257384, OPGW SHIELD SAG TABLE NH-257385  
 COND SHOWN AT 392 DEG. FINAL, SHIELD(S) SHOWN AT -20 DEG. INITIAL

STR - 140 TO STR - 155  
 COND: 6- 954 KCMIL ACSS/TW 20/7 @ 10220# D.T., RS = 1019FT (NORTH SIDE)  
 OPGW: 1- AC-26/57/635-48 FIBER @ 7220# D.T., RS = 1019FT (NORTH SIDE)  
 COND SAG TABLE NH-257384, OPGW SHIELD SAG TABLE NH-257385  
 COND SHOWN AT 392 DEG. FINAL, SHIELD(S) SHOWN AT -20 DEG. INITIAL



ISSUED FOR RECORD NDPSC PERMITTING - 5/8/2015

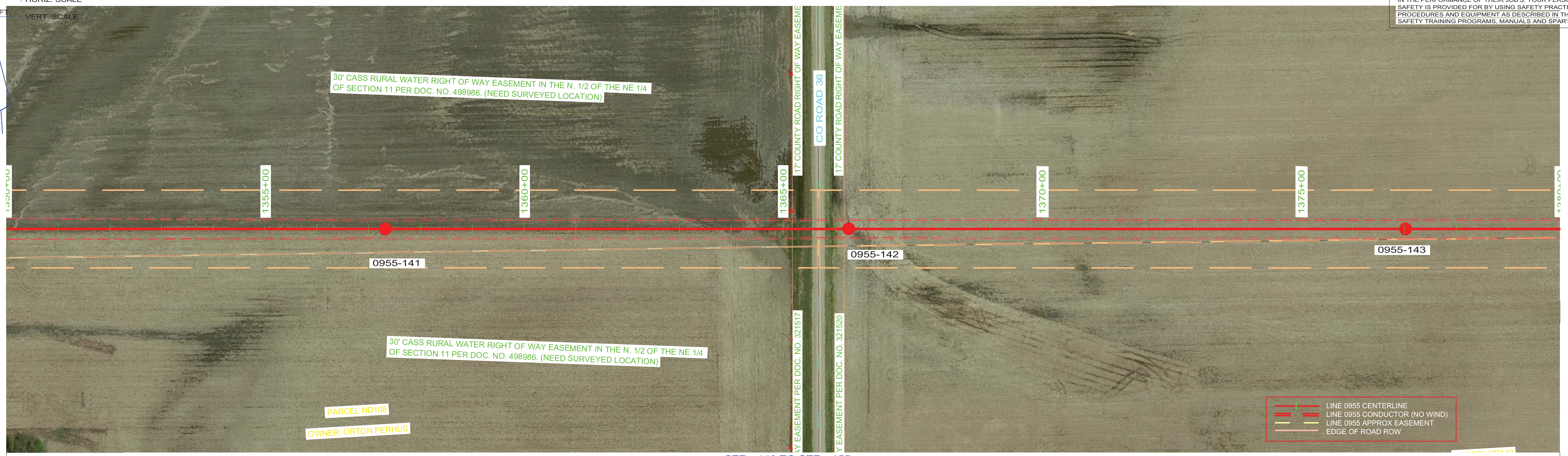
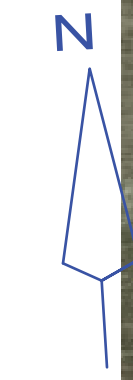
INTERNAL INFORMATION: DO NOT COPY OR DISTRIBUTE TO OTHERS WITHOUT EXPRESS WRITTEN CONSENT FROM XCEL ENERGY.

ENGINEERING DEPARTMENT, MINNEAPOLIS, MN  
Xcel Energy

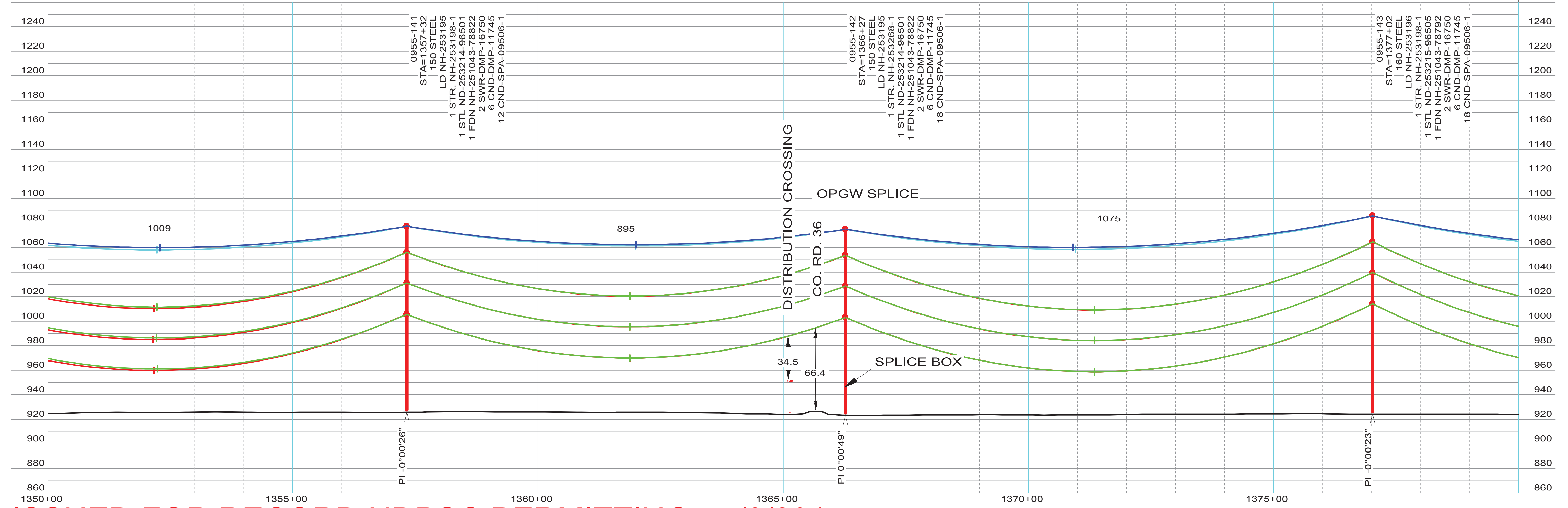
LINE NO. L0955  
NH-253190-60  
REV 1

THIS MAP/DOCUMENT IS A TOOL TO ASSIST EMPLOYEES IN THE PERFORMANCE OF THEIR JOB'S. YOUR PERSONAL SAFETY IS PROVIDED FOR BY USING SAFETY PRACTICES, PROCEDURES AND EQUIPMENT AS DESCRIBED IN THE SAFETY TRAINING PROGRAMS, MANUALS AND SPARS.

100.0 FT. HORIZ. SCALE  
40.0 FT. VERT. SCALE



STR - 140 TO STR - 155  
COND: 6- 954 KCMIL ACSS/TW 20/7 @ 10220# D.T., RS = 1019FT (NORTH SIDE)  
OPGW: 1- AC-26/57/635-48 FIBER @ 7220# D.T., RS = 1019FT (NORTH SIDE)  
COND SAG TABLE NH-257384, OPGW SHIELD SAG TABLE NH-257385  
COND SHOWN AT 392 DEG. FINAL, SHIELD(S) SHOWN AT -20 DEG. INITIAL

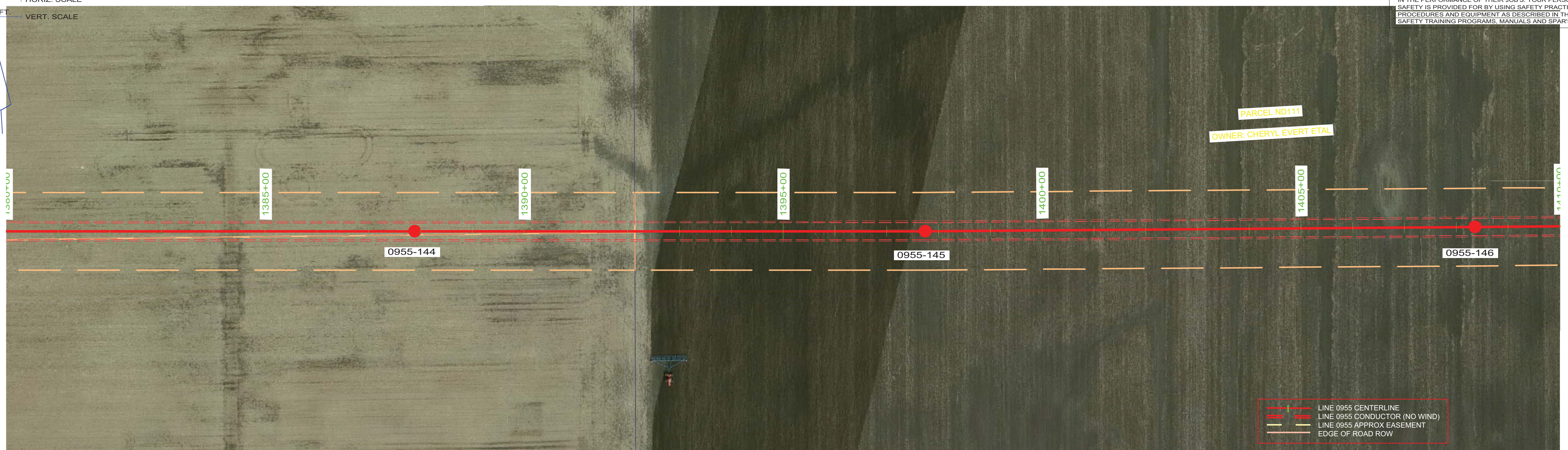


**ISSUED FOR RECORD NDPSC PERMITTING - 5/8/2015**

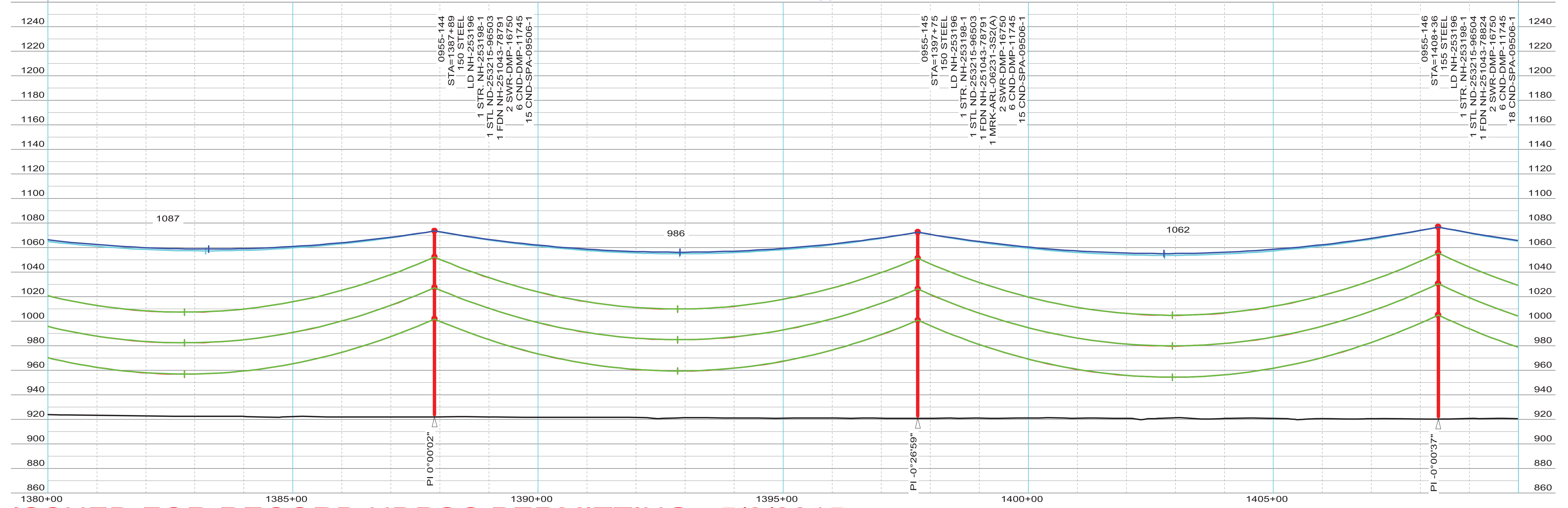
INTERNAL INFORMATION: DO NOT COPY OR DISTRIBUTE TO OTHERS WITHOUT EXPRESS WRITTEN CONSENT FROM XCEL ENERGY.

THIS MAP/DOCUMENT IS A TOOL TO ASSIST EMPLOYEES IN THE PERFORMANCE OF THEIR JOB'S. YOUR PERSONAL SAFETY IS PROVIDED FOR BY USING SAFETY PRACTICES, PROCEDURES AND EQUIPMENT AS DESCRIBED IN THE SAFETY TRAINING PROGRAMS, MANUALS AND SPARS.

100.0 FT. HORIZ. SCALE  
40.0 FT. VERT. SCALE



STR - 140 TO STR - 155  
COND: 6- 954 KCMIL ACSS/TW 20/7 @ 10220# D.T., RS = 1019FT (NORTH SIDE)  
OPGW: 1- AC-26/57/635-48 FIBER @ 7220# D.T., RS = 1019FT (NORTH SIDE)  
COND SAG TABLE NH-257384, OPGW SHIELD SAG TABLE NH-257385  
COND SHOWN AT 392 DEG. FINAL, SHIELD(S) SHOWN AT -20 DEG. INITIAL

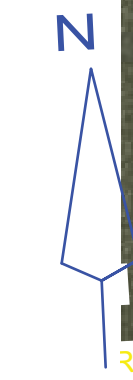


ISSUED FOR RECORD NDPSC PERMITTING - 5/8/2015

INTERNAL INFORMATION: DO NOT COPY OR DISTRIBUTE TO OTHERS WITHOUT EXPRESS WRITTEN CONSENT FROM XCEL ENERGY.

THIS MAP/DOCUMENT IS A TOOL TO ASSIST EMPLOYEES IN THE PERFORMANCE OF THEIR JOB'S. YOUR PERSONAL SAFETY IS PROVIDED FOR BY USING SAFETY PRACTICES, PROCEDURES AND EQUIPMENT AS DESCRIBED IN THE SAFETY TRAINING PROGRAMS, MANUALS AND SPARS.

100.0 FT. HORIZ. SCALE  
40.0 FT. VERT. SCALE



RT ETAL

PARCEL ND112  
OWNER: CHERYL EVERT ETAL

66' CASS COUNTY DRAIN 47 EASEMENT PER DOC. NO. 387402  
(ASSIGNMENT OF EASEMENT TO SOUTHEAST CASS WATER RESOURCE DISTRICT PER DOC. NO. 1285959)

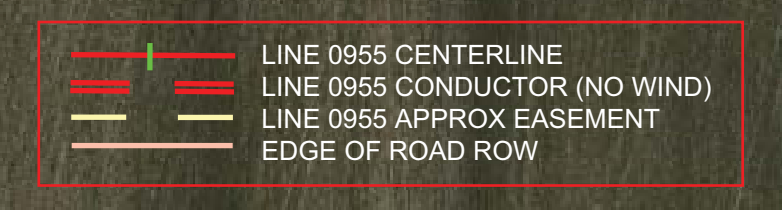
66' CASS COUNTY DRAIN 47 EASEMENT PER DOC. NO. 387402  
(ASSIGNMENT OF EASEMENT TO SOUTHEAST CASS WATER RESOURCE DISTRICT PER DOC. NO. 1285959)

107.6

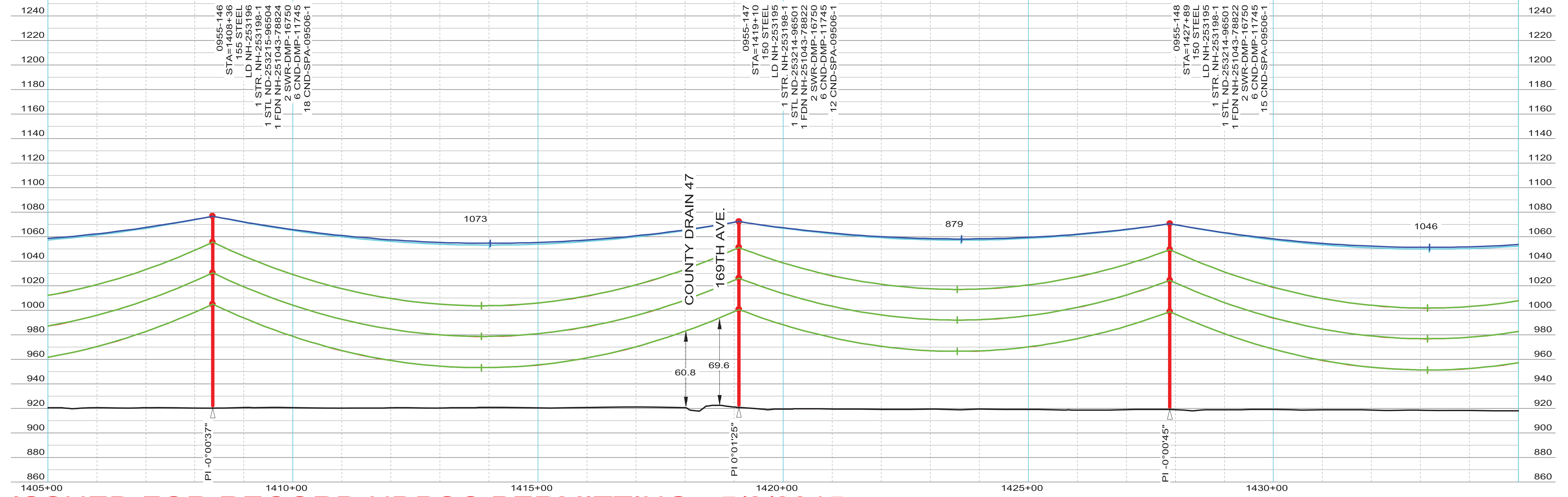
0955-146

0955-147

0955-148



STR - 140 TO STR - 155  
COND: 6- 954 KCMIL ACSS/TW 20/7 @ 10220# D.T., RS = 1019FT (NORTH SIDE)  
OPGW: 1- AC-26/57/635-48 FIBER @ 7220# D.T., RS = 1019FT (NORTH SIDE)  
COND SAG TABLE NH-257384, OPGW SHIELD SAG TABLE NH-257385  
COND SHOWN AT 392 DEG. FINAL, SHIELD(S) SHOWN AT -20 DEG. INITIAL



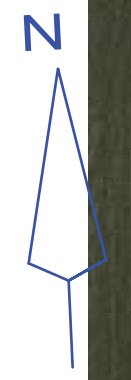
ISSUED FOR RECORD NDPSC PERMITTING - 5/8/2015

INTERNAL INFORMATION: DO NOT COPY OR DISTRIBUTE TO OTHERS WITHOUT EXPRESS WRITTEN CONSENT FROM XCEL ENERGY.

ENGINEERING DEPARTMENT, MINNEAPOLIS, MN	LINE NO. L0955	NH-253190-63	REV 1

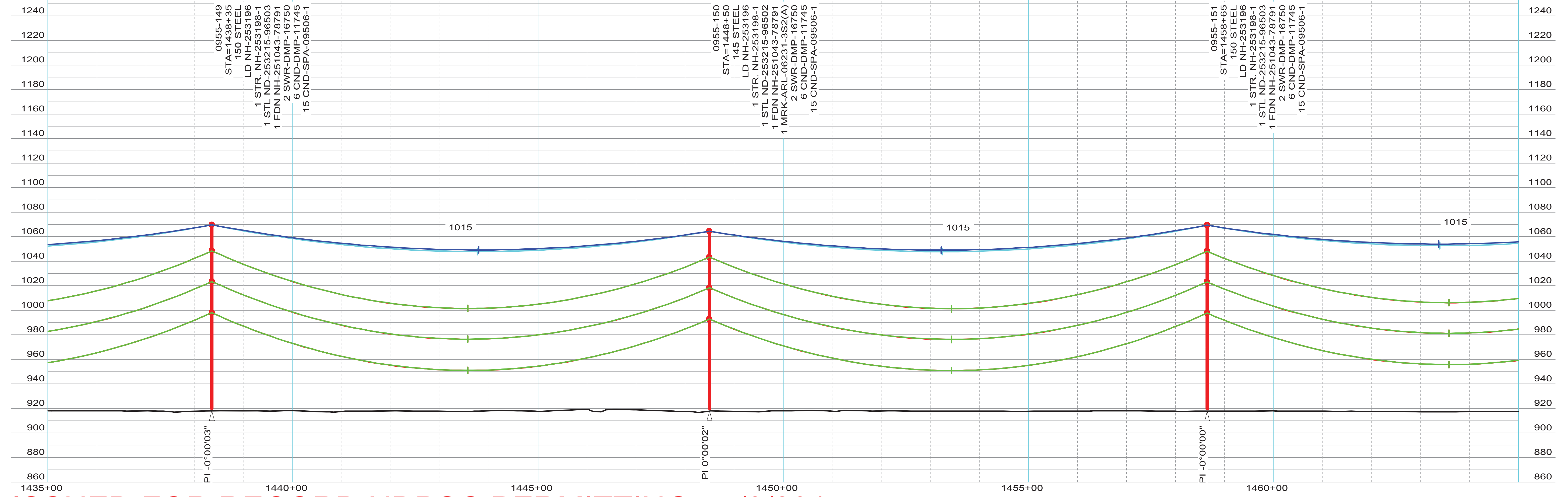
THIS MAP/DRAWING IS A TOOL TO ASSIST EMPLOYEES IN THE PERFORMANCE OF THEIR JOB'S. YOUR PERSONAL SAFETY IS PROVIDED FOR BY USING SAFETY PRACTICES, PROCEDURES AND EQUIPMENT AS DESCRIBED IN THE SAFETY TRAINING PROGRAMS, MANUALS AND SPARS.

100.0 FT. HORIZ. SCALE  
40.0 FT. VERT. SCALE



LINE 0955 CENTERLINE  
LINE 0955 CONDUCTOR (NO WIND)  
LINE 0955 APPROX EASEMENT  
EDGE OF ROAD ROW

STR - 140 TO STR - 155  
COND: 6- 954 KCMIL ACSS/TW 20/7 @ 10220# D.T., RS = 1019FT (NORTH SIDE)  
OPGW: 1- AC-26/57/635-48 FIBER @ 7220# D.T., RS = 1019FT (NORTH SIDE)  
COND SAG TABLE NH-257384, OPGW SHIELD SAG TABLE NH-257385  
COND SHOWN AT 392 DEG. FINAL, SHIELD(S) SHOWN AT -20 DEG. INITIAL



ISSUED FOR RECORD NDPSC PERMITTING - 5/8/2015

INTERNAL INFORMATION: DO NOT COPY OR DISTRIBUTE TO OTHERS WITHOUT EXPRESS WRITTEN CONSENT FROM XCEL ENERGY.