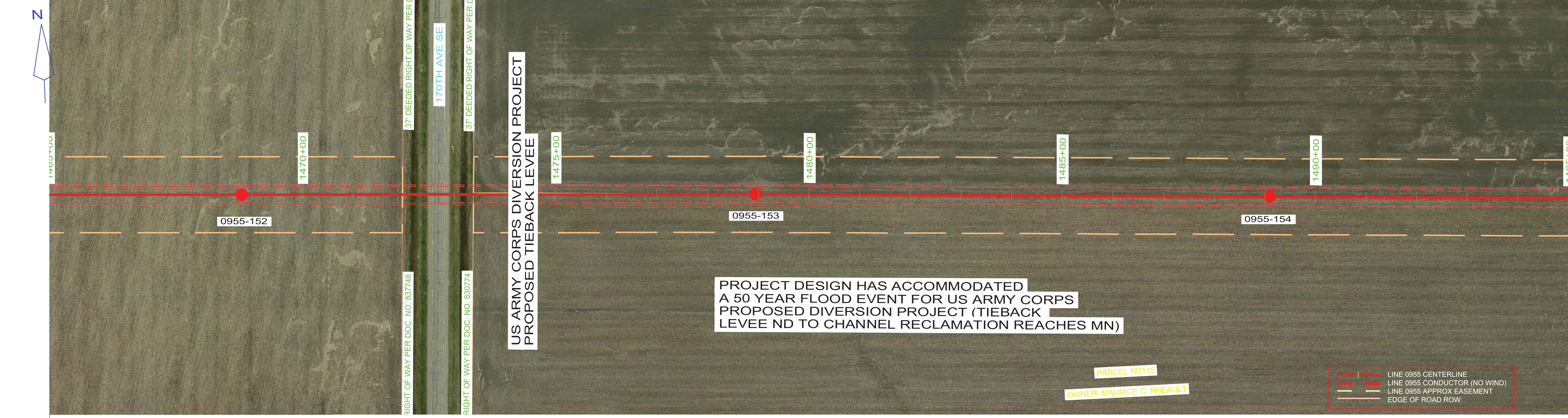
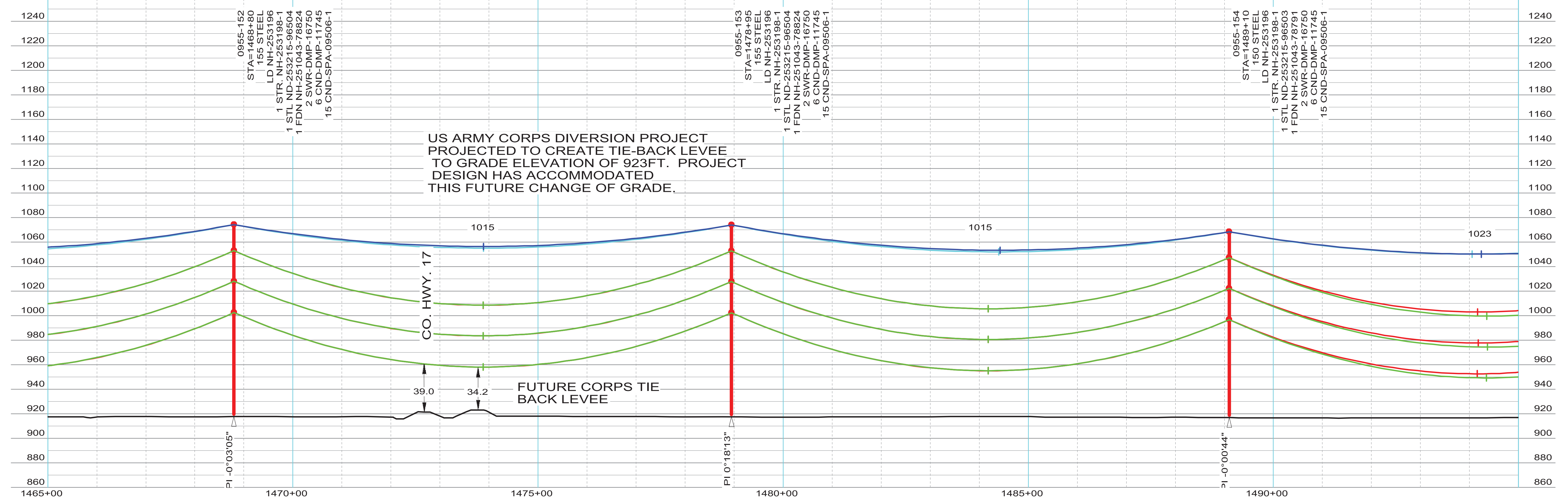


THIS MAP/DOCUMENT IS A TOOL TO ASSIST EMPLOYEES IN THE PERFORMANCE OF THEIR JOB'S. YOUR PERSONAL SAFETY IS PROVIDED FOR BY USING SAFETY PRACTICES, PROCEDURES AND EQUIPMENT AS DESCRIBED IN THE SAFETY TRAINING PROGRAMS, MANUALS AND SPARS.

100.0 FT. HORIZ. SCALE  
40.0 FT. VERT. SCALE



STR - 140 TO STR - 155  
 COND: 6- 954 KCMIL ACSS/TW 20/7 @ 10220# D.T., RS = 1019FT (NORTH SIDE)  
 OPGW: 1- AC-26/57/635-48 FIBER @ 7220# D.T., RS = 1019FT (NORTH SIDE)  
 COND SAG TABLE NH-257384, OPGW SHIELD SAG TABLE NH-257385  
 COND SHOWN AT 392 DEG. FINAL, SHIELD(S) SHOWN AT -20 DEG. INITIAL

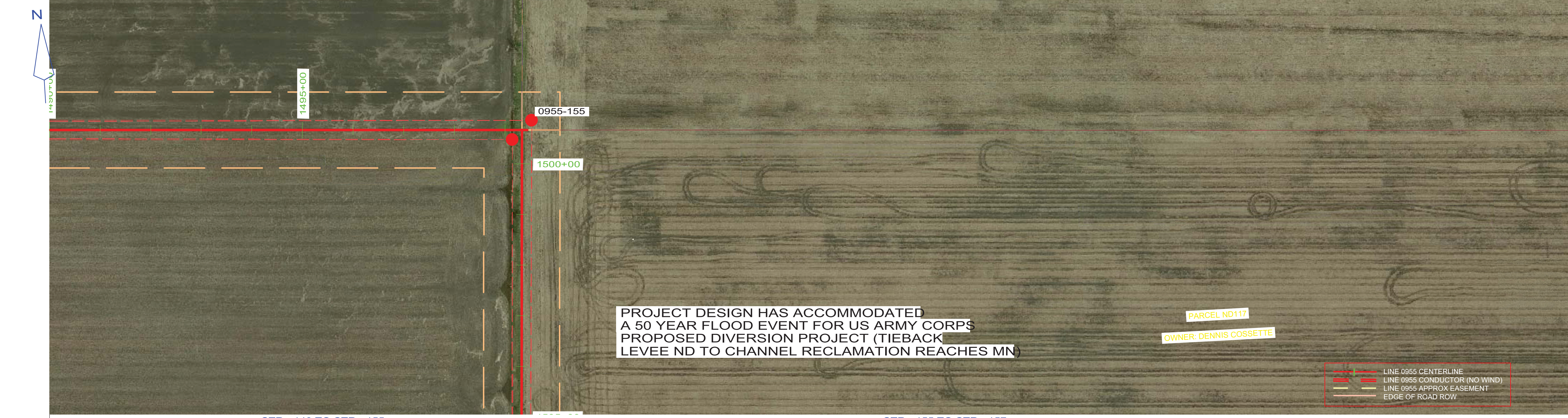


ISSUED FOR RECORD NDPSC PERMITTING - 5/8/2015

INTERNAL INFORMATION: DO NOT COPY OR DISTRIBUTE TO OTHERS WITHOUT EXPRESS WRITTEN CONSENT FROM XCEL ENERGY.

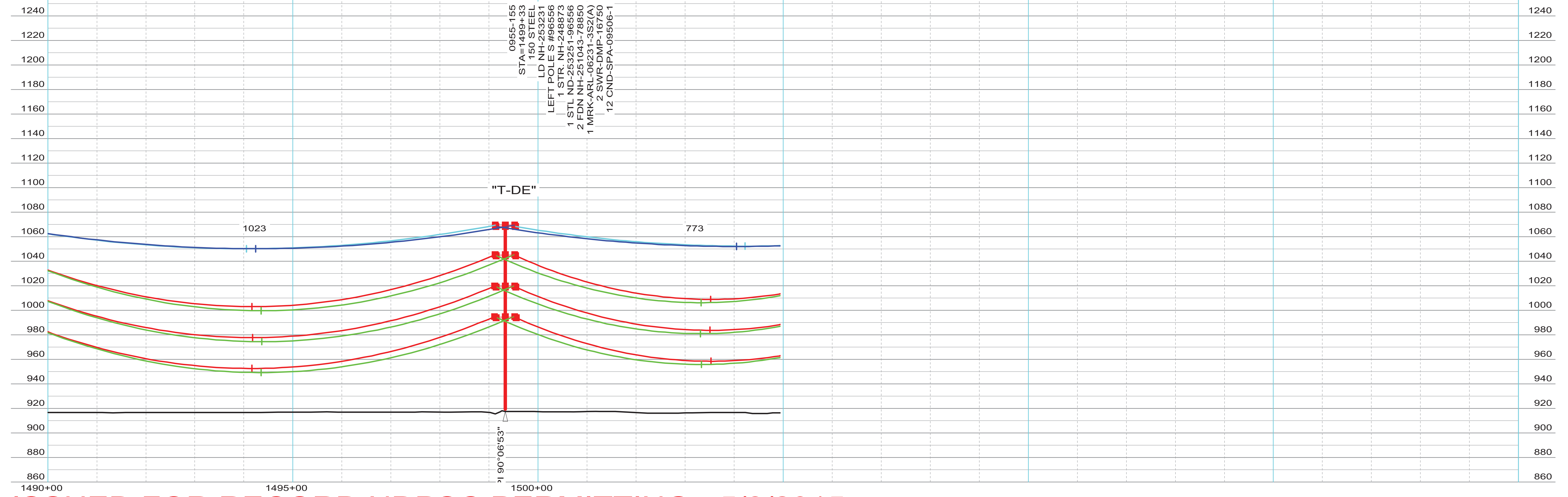
THIS MAP/DOCUMENT IS A TOOL TO ASSIST EMPLOYEES IN THE PERFORMANCE OF THEIR JOB'S. YOUR PERSONAL SAFETY IS PROVIDED FOR BY USING SAFETY PRACTICES, PROCEDURES AND EQUIPMENT AS DESCRIBED IN THE SAFETY TRAINING PROGRAMS, MANUALS AND SPARS.

100.0 FT. HORIZ. SCALE  
40.0 FT. VERT. SCALE



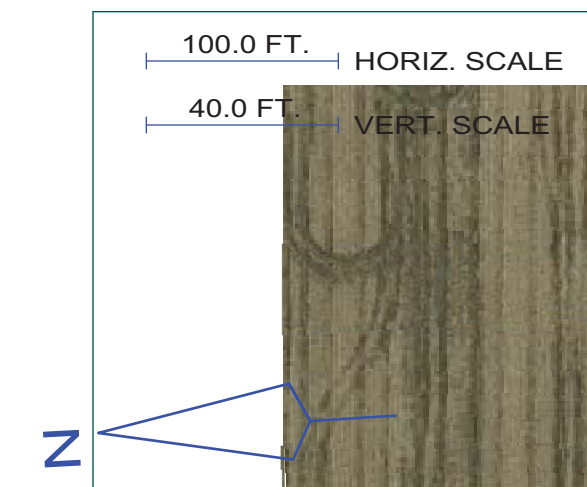
STR - 140 TO STR - 155  
 COND: 6- 954 KCMIL ACSS/TW 20/7 @ 10220# D.T., RS = 1019FT (NORTH SIDE)  
 OPGW: 1- AC-26/57/635-48 FIBER @ 7220# D.T., RS = 1019FT (NORTH SIDE)  
 COND SAG TABLE NH-257384, OPGW SHIELD SAG TABLE NH-257385  
 COND SHOWN AT 392 DEG. FINAL, SHIELD(S) SHOWN AT -20 DEG. INITIAL

STR - 155 TO STR - 157  
 COND: 6- 954 KCMIL ACSS/TW 20/7 @ 9130# D.T., RS = 698FT (EAST SIDE)  
 OPGW: 1- AC-26/57/635-48 FIBER @ 6235# D.T., RS = 699FT (EAST SIDE)  
 COND SAG TABLE NH-257384, OPGW SHIELD SAG TABLE NH-257385  
 COND SHOWN AT 392 DEG. FINAL, SHIELD(S) SHOWN AT -20 DEG. INITIAL



ISSUED FOR RECORD NDPSC PERMITTING - 5/8/2015

INTERNAL INFORMATION: DO NOT COPY OR DISTRIBUTE TO OTHERS WITHOUT EXPRESS WRITTEN CONSENT FROM XCEL ENERGY.



PROJECT DESIGN HAS ACCOMMODATED A 50 YEAR FLOOD EVENT PROPOSED DIVERSION PROJECT LEVEE ND TO CHANNEL RECLAMATION REACHES MN)

PROJECT DESIGN HAS ACCOMMODATED A 50 YEAR FLOOD EVENT FOR US ARMY CORPS PROPOSED DIVERSION PROJECT (TIEBACK LEVEE ND TO CHANNEL RECLAMATION REACHES MN)

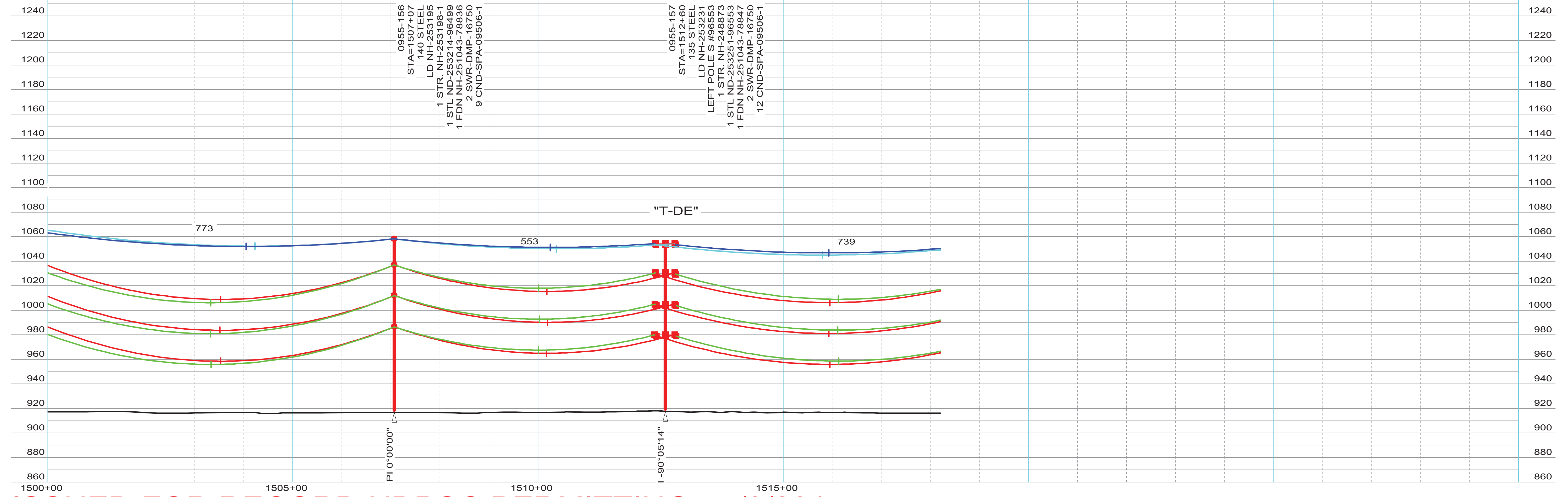
OWNER: DIANE Y. RICI

THIS MAP/DOCUMENT IS A TOOL TO ASSIST EMPLOYEES IN THE PERFORMANCE OF THEIR JOB'S. YOUR PERSONAL SAFETY IS PROVIDED FOR BY USING SAFETY PRACTICES, PROCEDURES AND EQUIPMENT AS DESCRIBED IN THE SAFETY TRAINING PROGRAMS, MANUALS AND SPARS.



STR - 155 TO STR - 157  
COND: 6- 954 KCMIL ACSS/TW 20/7 @ 9130# D.T., RS = 698FT (EAST SIDE)  
OPGW: 1- AC-26/57/635-48 FIBER @ 6235# D.T., RS = 699FT (EAST SIDE)  
COND SAG TABLE NH-257384, OPGW SHIELD SAG TABLE NH-257385  
COND SHOWN AT 392 DEG. FINAL, SHIELD(S) SHOWN AT -20 DEG. INITIAL

STR - 157 TO STR - 163  
COND: 6- 954 KCMIL ACSS/TW 20/7 @ 9850# D.T., RS = 900FT (NORTH SIDE)  
OPGW: 1- AC-26/57/635-48 FIBER @ 6940# D.T., RS = 900FT (NORTH SIDE)  
COND SAG TABLE NH-257384, OPGW SHIELD SAG TABLE NH-257385  
COND SHOWN AT 392 DEG. FINAL, SHIELD(S) SHOWN AT -20 DEG. INITIAL



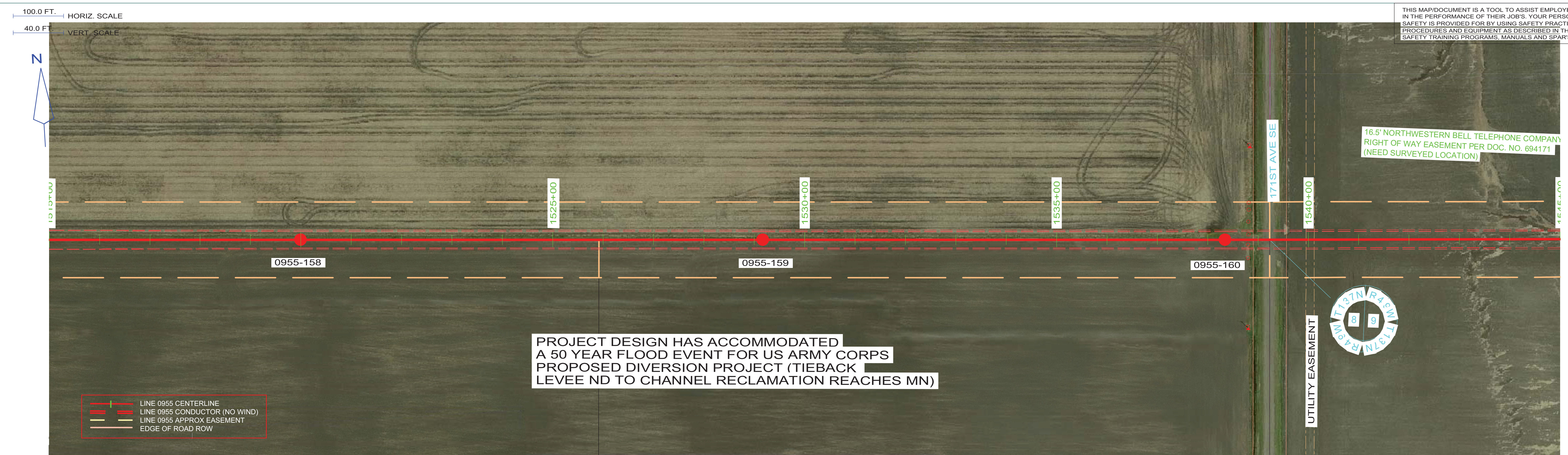
ISSUED FOR RECORD NDPSC PERMITTING - 5/8/2015

INTERNAL INFORMATION: DO NOT COPY OR DISTRIBUTE TO OTHERS WITHOUT EXPRESS WRITTEN CONSENT FROM XCEL ENERGY.

ENGINEERING DEPARTMENT, MINNEAPOLIS, MN  
Xcel Energy

LINE NO. L0955  
NH-253190-67  
REV 1

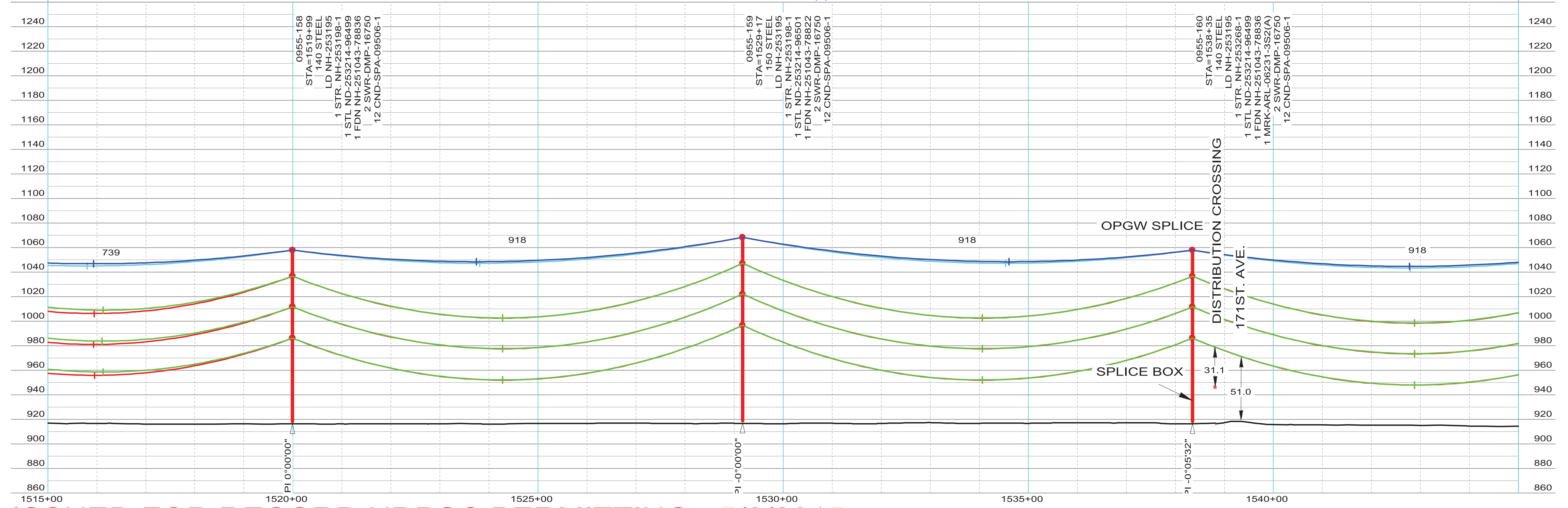
THIS MAP/DOCUMENT IS A TOOL TO ASSIST EMPLOYEES IN THE PERFORMANCE OF THEIR JOB'S. YOUR PERSONAL SAFETY IS PROVIDED FOR BY USING SAFETY PRACTICES, PROCEDURES AND EQUIPMENT AS DESCRIBED IN THE SAFETY TRAINING PROGRAMS, MANUALS AND SPARS.



PROJECT DESIGN HAS ACCOMMODATED A 50 YEAR FLOOD EVENT FOR US ARMY CORPS PROPOSED DIVERSION PROJECT (TIEBACK LEVEE ND TO CHANNEL RECLAMATION REACHES MN)

- LINE 0955 CENTERLINE
- LINE 0955 CONDUCTOR (NO WIND)
- LINE 0955 APPROX EASEMENT
- EDGE OF ROAD ROW

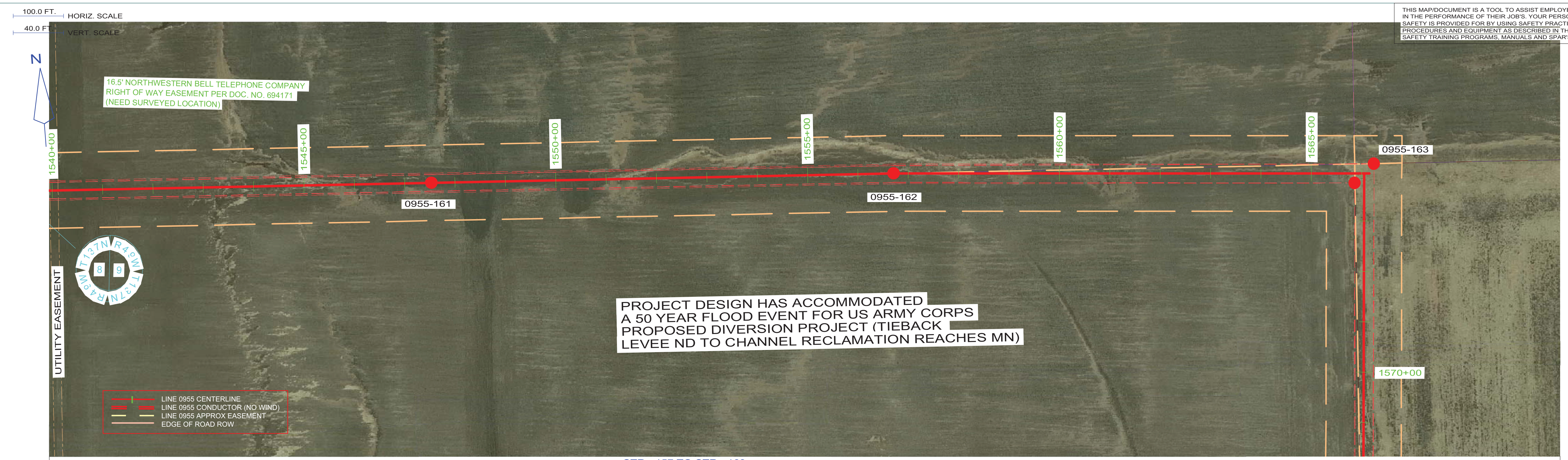
STR - 157 TO STR - 163  
 COND: 6- 954 KCMIL ACSS/TW 20/7 @ 9850# D.T., RS = 900FT (NORTH SIDE)  
 OPGW: 1- AC-26/57/635-48 FIBER @ 6940# D.T., RS = 900FT (NORTH SIDE)  
 COND SAG TABLE NH-257384, OPGW SHIELD SAG TABLE NH-257385  
 COND SHOWN AT 392 DEG. FINAL, SHIELD(S) SHOWN AT -20 DEG. INITIAL



ISSUED FOR RECORD NDPSC PERMITTING - 5/8/2015

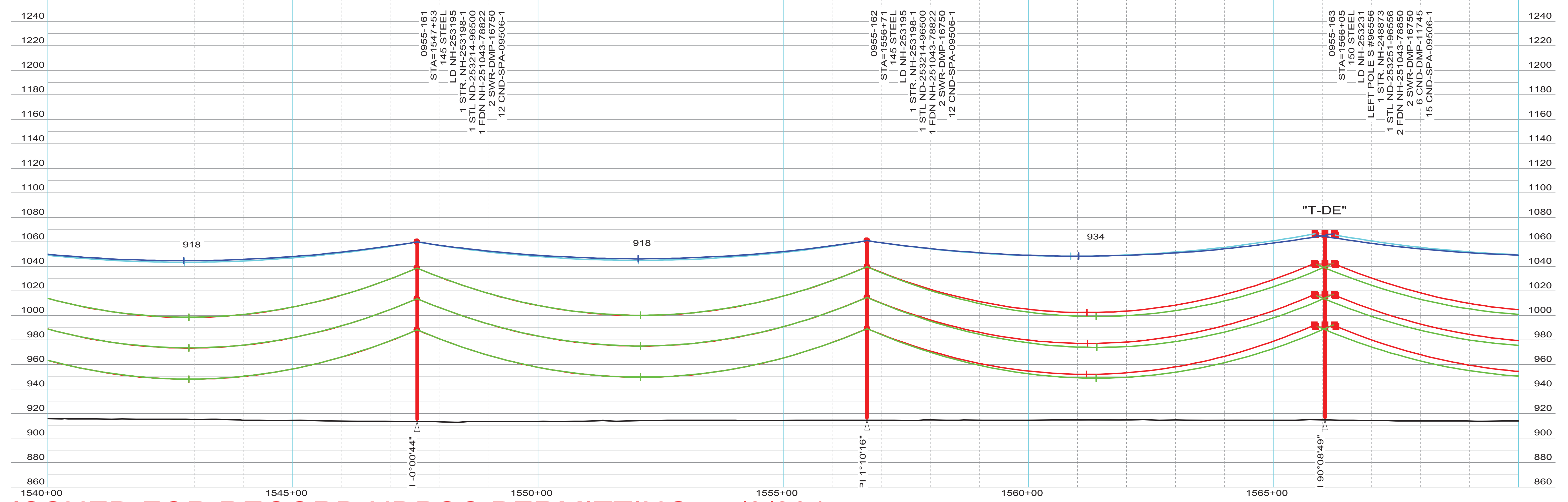
INTERNAL INFORMATION: DO NOT COPY OR DISTRIBUTE TO OTHERS WITHOUT EXPRESS WRITTEN CONSENT FROM XCEL ENERGY.

THIS MAP/DOCUMENT IS A TOOL TO ASSIST EMPLOYEES IN THE PERFORMANCE OF THEIR JOB'S. YOUR PERSONAL SAFETY IS PROVIDED FOR BY USING SAFETY PRACTICES, PROCEDURES AND EQUIPMENT AS DESCRIBED IN THE SAFETY TRAINING PROGRAMS, MANUALS AND SPARS.



STR - 157 TO STR - 163  
COND: 6- 954 KCMIL ACSS/TW 20/7 @ 9850# D.T., RS = 900FT (NORTH SIDE)  
OPGW: 1- AC-26/57/635-48 FIBER @ 6940# D.T., RS = 900FT (NORTH SIDE)  
COND SAG TABLE NH-257384, OPGW SHIELD SAG TABLE NH-257385  
COND SHOWN AT 392 DEG. FINAL, SHIELD(S) SHOWN AT -20 DEG. INITIAL

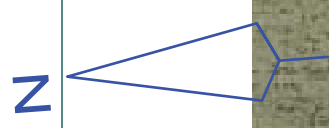
STR - 163 TO STR - 167  
COND: 6- 954 KCMIL ACSS/TW 20/7 @ 10125# D.T., RS = 988FT (EAST SIDE)  
OPGW: 1- AC-26/57/635-48 FIBER @ 7150# D.T., RS = 988FT (EAST SIDE)  
COND SAG TABLE NH-257384, OPGW SHIELD SAG TABLE NH-257385  
COND SHOWN AT 392 DEG. FINAL, SHIELD(S) SHOWN AT -20 DEG. INITIAL



ISSUED FOR RECORD NDPSC PERMITTING - 5/8/2015

INTERNAL INFORMATION: DO NOT COPY OR DISTRIBUTE TO OTHERS WITHOUT EXPRESS WRITTEN CONSENT FROM XCEL ENERGY.

100.0 FT. HORIZ. SCALE  
40.0 FT. VERT. SCALE



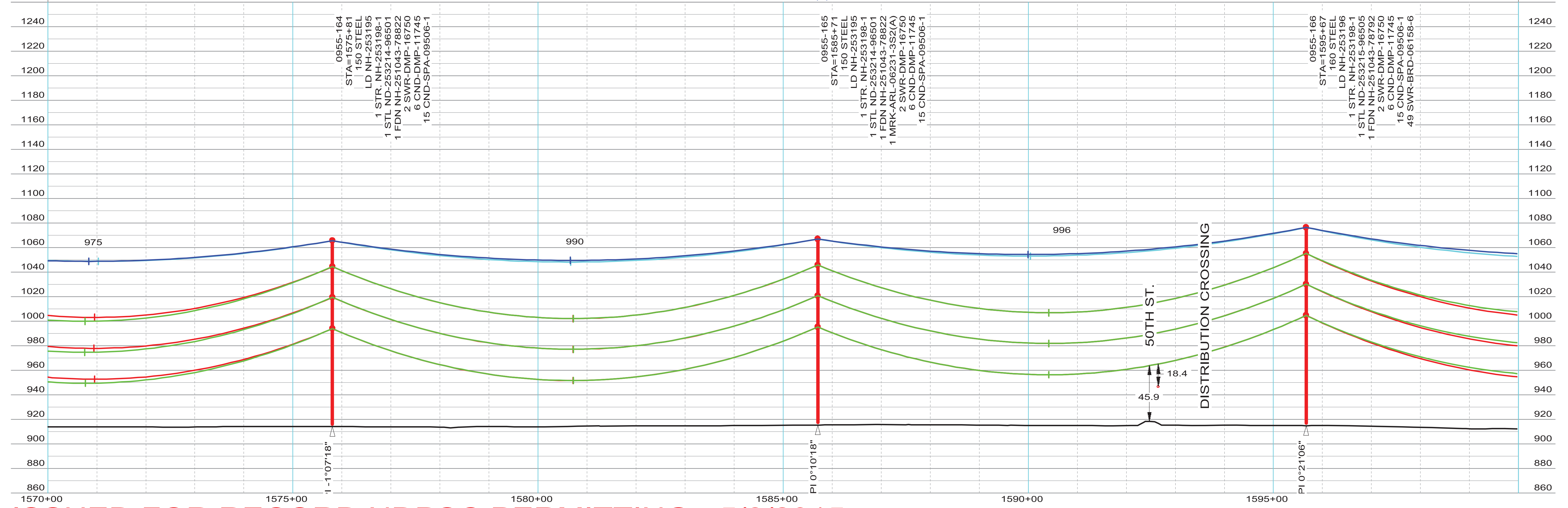
THIS MAP/DOCUMENT IS A TOOL TO ASSIST EMPLOYEES IN THE PERFORMANCE OF THEIR JOB'S. YOUR PERSONAL SAFETY IS PROVIDED FOR BY USING SAFETY PRACTICES, PROCEDURES AND EQUIPMENT AS DESCRIBED IN THE SAFETY TRAINING PROGRAMS, MANUALS AND SPARS.



LINE 0955 CENTERLINE  
LINE 0955 CONDUCTOR (NO WIND)  
LINE 0955 APPROX EASEMENT  
EDGE OF ROAD ROW

PROJECT DESIGN HAS ACCOMMODATED  
A 50 YEAR FLOOD EVENT FOR US ARMY CORPS  
PROPOSED DIVERSION PROJECT (TIEBACK  
LEVEE ND TO CHANNEL RECLAMATION REACHES MN)

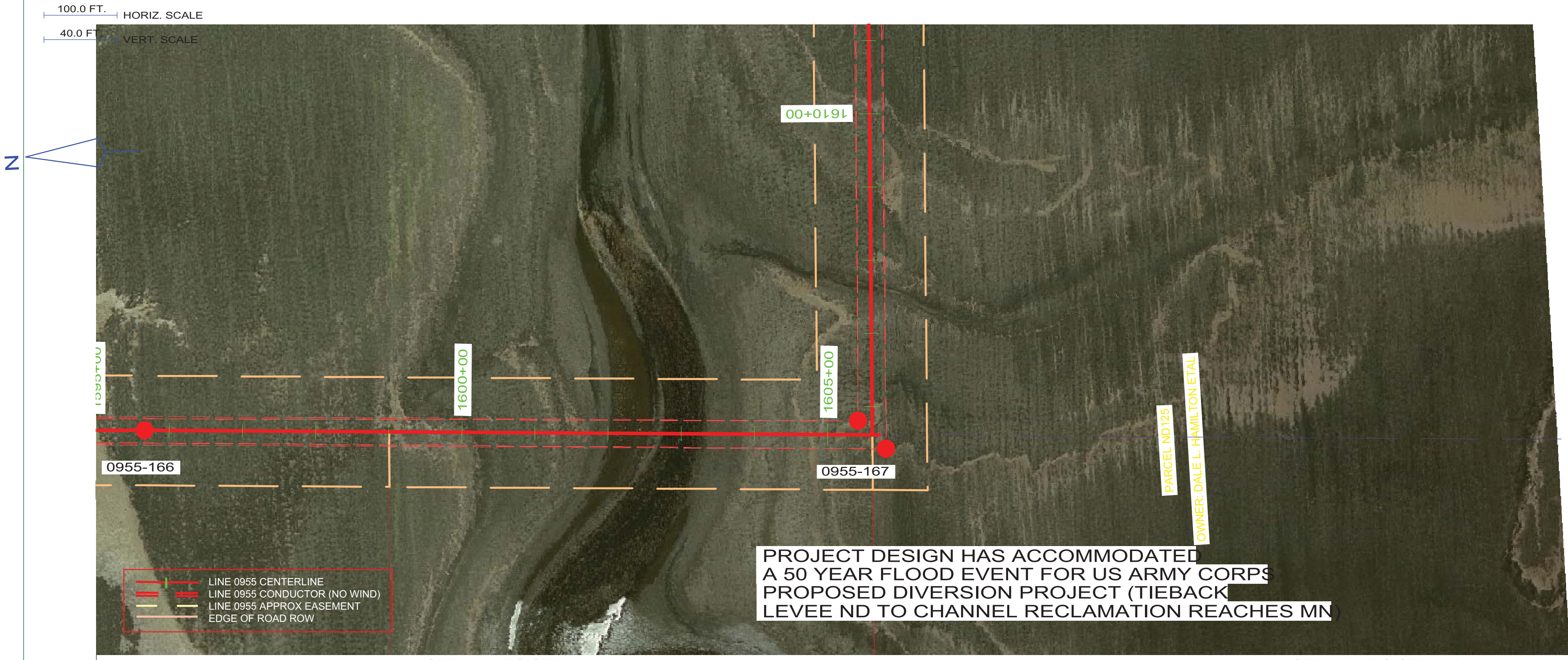
STR - 163 TO STR - 167  
COND: 6- 954 KCMIL ACSS/TW 20/7 @ 10120# D.T., RS = 988FT (EAST SIDE)  
OPGW: 1- AC-26/57/635-48 FIBER @ 7145# D.T., RS = 988FT (EAST SIDE)  
COND SAG TABLE NH-257384, OPGW SHIELD SAG TABLE NH-257385  
COND SHOWN AT 392 DEG. FINAL, SHIELD(S) SHOWN AT -20 DEG. INITIAL



ISSUED FOR RECORD NDPSC PERMITTING - 5/8/2015

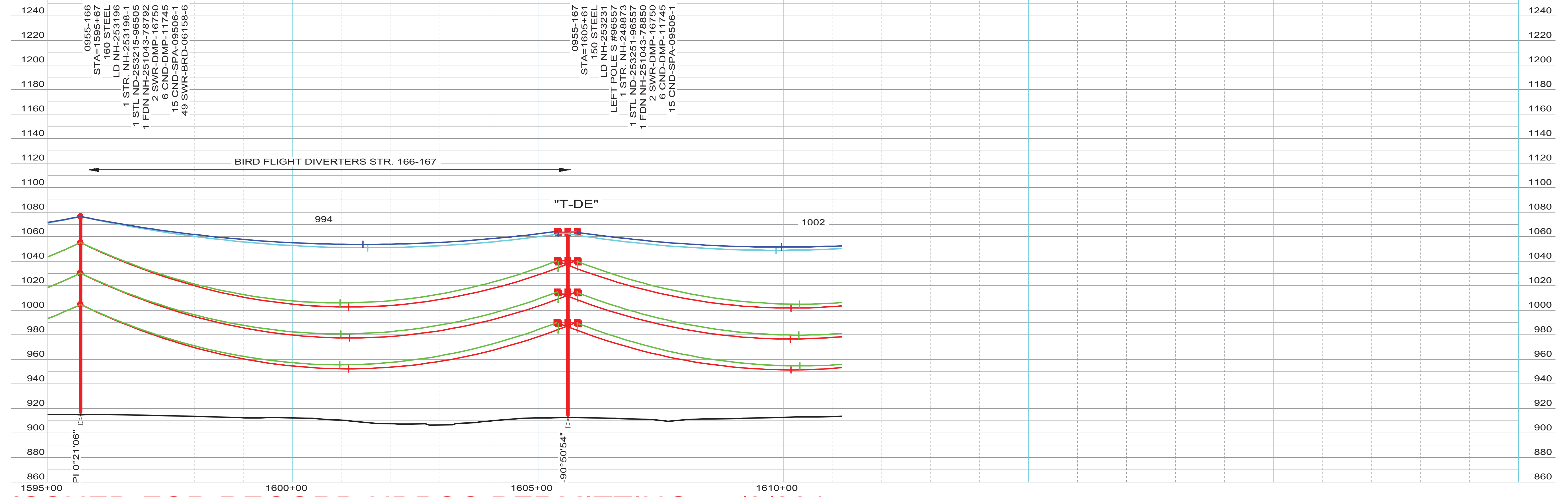
INTERNAL INFORMATION: DO NOT COPY OR DISTRIBUTE TO OTHERS WITHOUT EXPRESS WRITTEN CONSENT FROM XCEL ENERGY.

THIS MAP/DOCUMENT IS A TOOL TO ASSIST EMPLOYEES IN THE PERFORMANCE OF THEIR JOB'S. YOUR PERSONAL SAFETY IS PROVIDED FOR BY USING SAFETY PRACTICES, PROCEDURES AND EQUIPMENT AS DESCRIBED IN THE SAFETY TRAINING PROGRAMS, MANUALS AND SPARS.



STR - 163 TO STR - 167  
 COND: 6- 954 KCMIL ACSS/TW 20/7 @ 10120# D.T., RS = 988FT (EAST SIDE)  
 OPGW: 1- AC-26/57/635-48 FIBER @ 7145# D.T., RS = 988FT (EAST SIDE)  
 COND SAG TABLE NH-257384, OPGW SHIELD SAG TABLE NH-257385  
 COND SHOWN AT 392 DEG. FINAL, SHIELD(S) SHOWN AT -20 DEG. INITIAL

STR - 167 TO STR - 185  
 COND: 6- 954 KCMIL ACSS/TW 20/7 @ 10315# D.T., RS = 1049FT (NORTH SIDE)  
 OPGW: 1- AC-26/57/635-48 FIBER @ 7290# D.T., RS = 1049FT (NORTH SIDE)  
 COND SAG TABLE NH-257384, OPGW SHIELD SAG TABLE NH-257385  
 COND SHOWN AT 392 DEG. FINAL, SHIELD(S) SHOWN AT -20 DEG. INITIAL



ISSUED FOR RECORD NDPSC PERMITTING - 5/8/2015

INTERNAL INFORMATION: DO NOT COPY OR DISTRIBUTE TO OTHERS WITHOUT EXPRESS WRITTEN CONSENT FROM XCEL ENERGY.

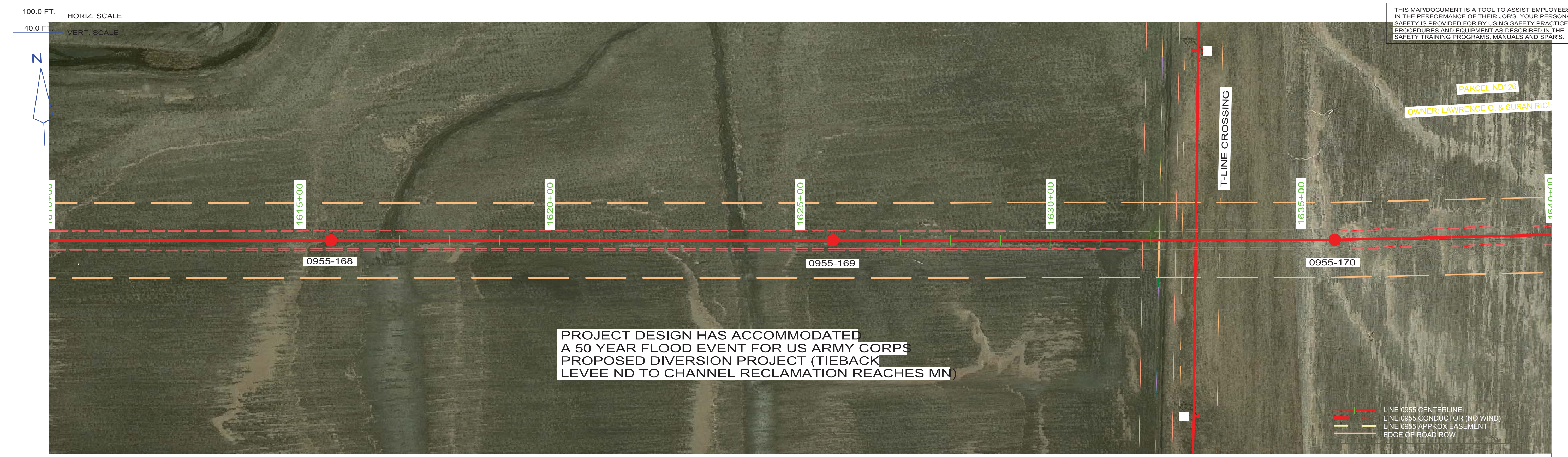
ENGINEERING DEPARTMENT, MINNEAPOLIS, MN  
Xcel Energy

LINE NO. L0955

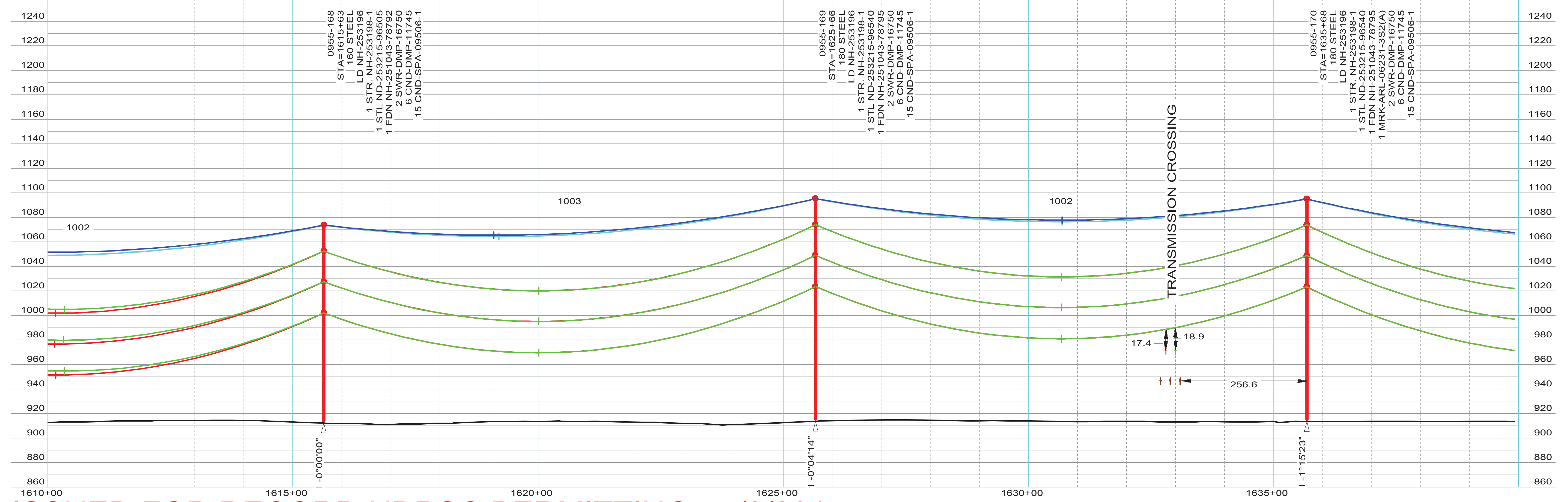
NH-253190-71

REV 1

THIS MAP/DOCUMENT IS A TOOL TO ASSIST EMPLOYEES IN THE PERFORMANCE OF THEIR JOB'S. YOUR PERSONAL SAFETY IS PROVIDED FOR BY USING SAFETY PRACTICES, PROCEDURES AND EQUIPMENT AS DESCRIBED IN THE SAFETY TRAINING PROGRAMS, MANUALS AND SPARS.



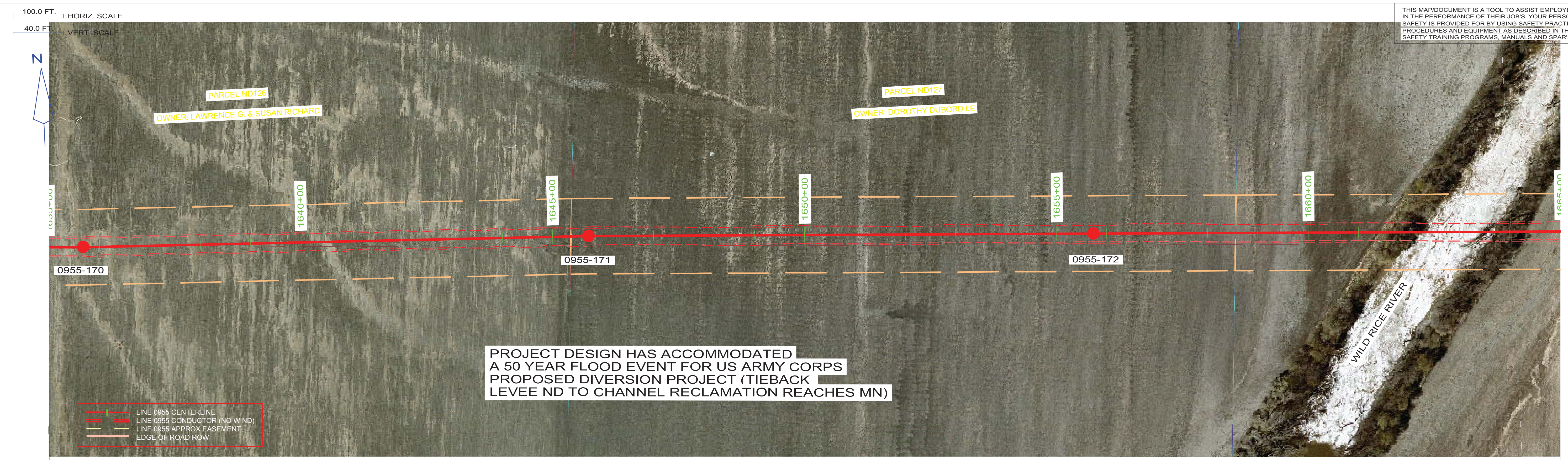
STR - 167 TO STR - 185  
 COND: 6- 954 KCMIL ACSS/TW 20/7 @ 10315# D.T., RS = 1049FT (NORTH SIDE)  
 OPGW: 1- AC-26/57/635-48 FIBER @ 7290# D.T., RS = 1049FT (NORTH SIDE)  
 COND SAG TABLE NH-257384, OPGW SHIELD SAG TABLE NH-257385  
 COND SHOWN AT 392 DEG. FINAL, SHIELD(S) SHOWN AT -20 DEG. INITIAL



ISSUED FOR RECORD NDPSC PERMITTING - 5/8/2015

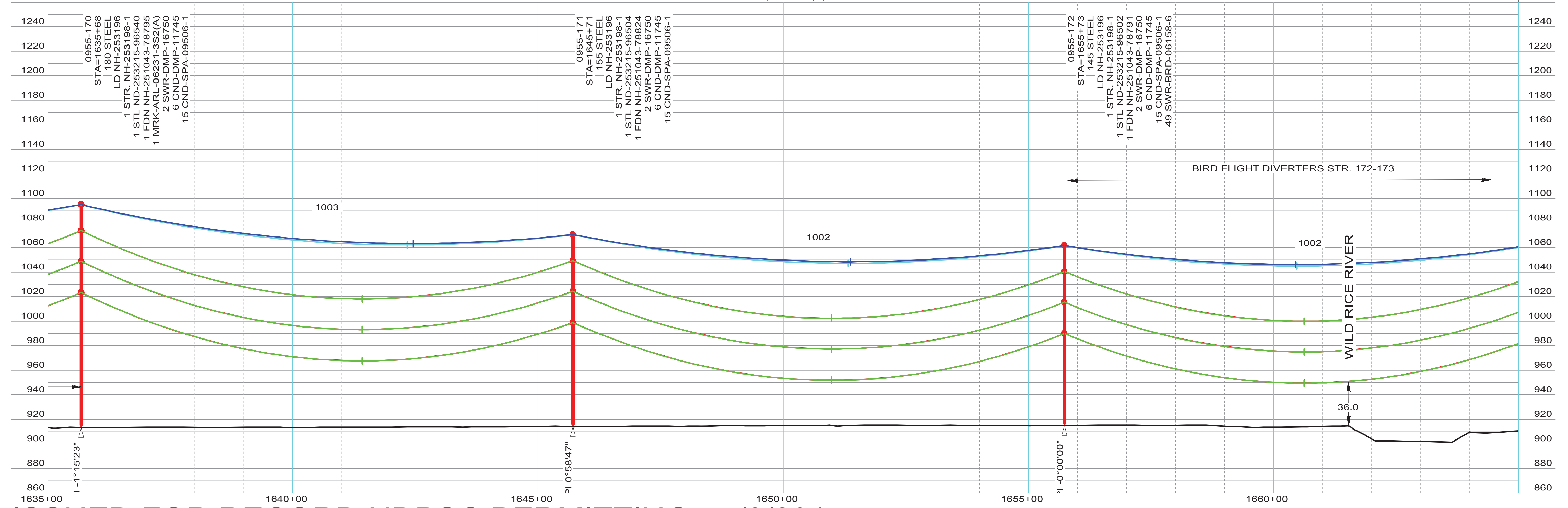
INTERNAL INFORMATION: DO NOT COPY OR DISTRIBUTE TO OTHERS WITHOUT EXPRESS WRITTEN CONSENT FROM XCEL ENERGY.

THIS MAP/DOCUMENT IS A TOOL TO ASSIST EMPLOYEES IN THE PERFORMANCE OF THEIR JOB'S. YOUR PERSONAL SAFETY IS PROVIDED FOR BY USING SAFETY PRACTICES, PROCEDURES AND EQUIPMENT AS DESCRIBED IN THE SAFETY TRAINING PROGRAMS, MANUALS AND SPARS.



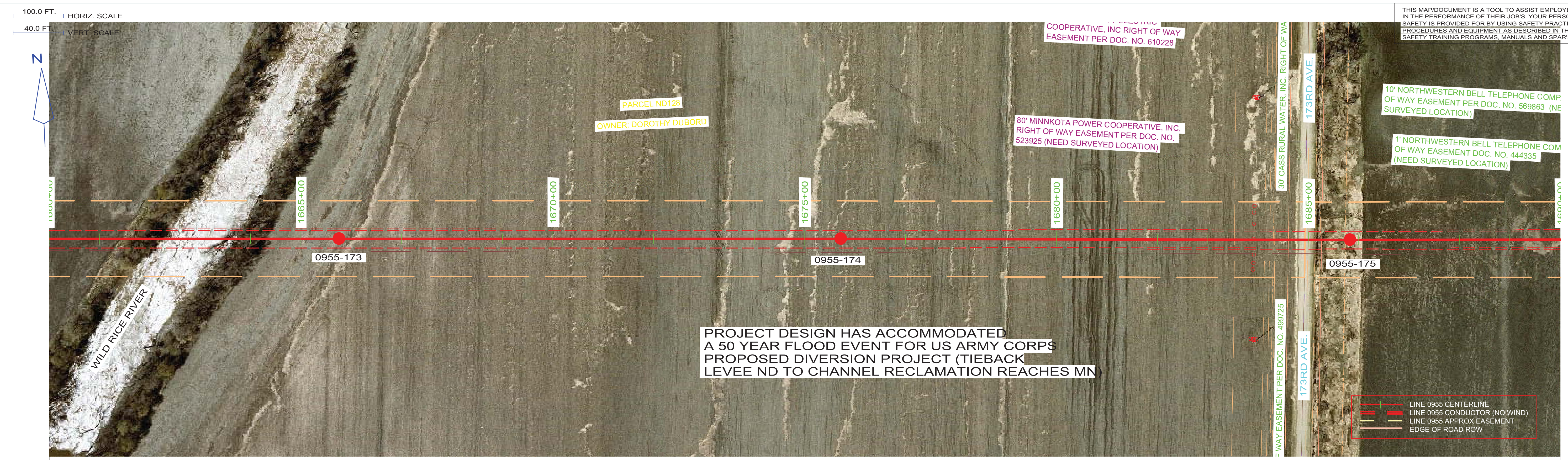
PROJECT DESIGN HAS ACCOMMODATED A 50 YEAR FLOOD EVENT FOR US ARMY CORPS PROPOSED DIVERSION PROJECT (TIEBACK LEVEE ND TO CHANNEL RECLAMATION REACHES MN)

STR - 167 TO STR - 185  
COND: 6- 954 KCMIL ACSS/TW 20/7 @ 10315# D.T., RS = 1049FT (NORTH SIDE)  
OPGW: 1- AC-26/57/635-48 FIBER @ 7290# D.T., RS = 1049FT (NORTH SIDE)  
COND SAG TABLE NH-257384, OPGW SHIELD SAG TABLE NH-257385  
COND SHOWN AT 392 DEG. FINAL, SHIELD(S) SHOWN AT -20 DEG. INITIAL



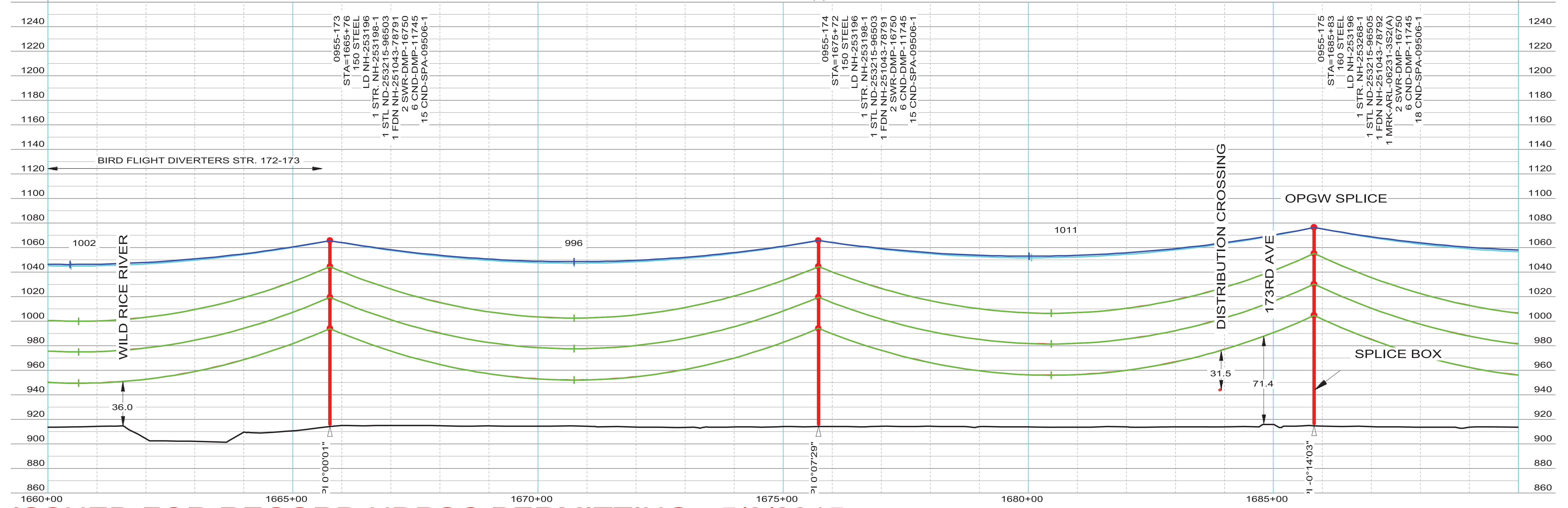
ISSUED FOR RECORD NDPSC PERMITTING - 5/8/2015

INTERNAL INFORMATION: DO NOT COPY OR DISTRIBUTE TO OTHERS WITHOUT EXPRESS WRITTEN CONSENT FROM XCEL ENERGY.



PROJECT DESIGN HAS ACCOMMODATED  
A 50 YEAR FLOOD EVENT FOR US ARMY CORPS  
PROPOSED DIVERSION PROJECT (TIEBACK  
LEVEE ND TO CHANNEL RECLAMATION REACHES MN)

STR - 167 TO STR - 185  
COND: 6- 954 KCMIL ACSS/TW 20/7 @ 10315# D.T., RS = 1049FT (NORTH SIDE)  
OPGW: 1- AC-26/57/635-48 FIBER @ 7290# D.T., RS = 1049FT (NORTH SIDE)  
COND SAG TABLE NH-257384, OPGW SHIELD SAG TABLE NH-257385  
COND SHOWN AT 392 DEG. FINAL, SHIELD(S) SHOWN AT -20 DEG. INITIAL



**ISSUED FOR RECORD NDPSC PERMITTING - 5/8/2015**

INTERNAL INFORMATION: DO NOT COPY OR DISTRIBUTE TO OTHERS WITHOUT EXPRESS WRITTEN CONSENT FROM XCEL ENERGY.