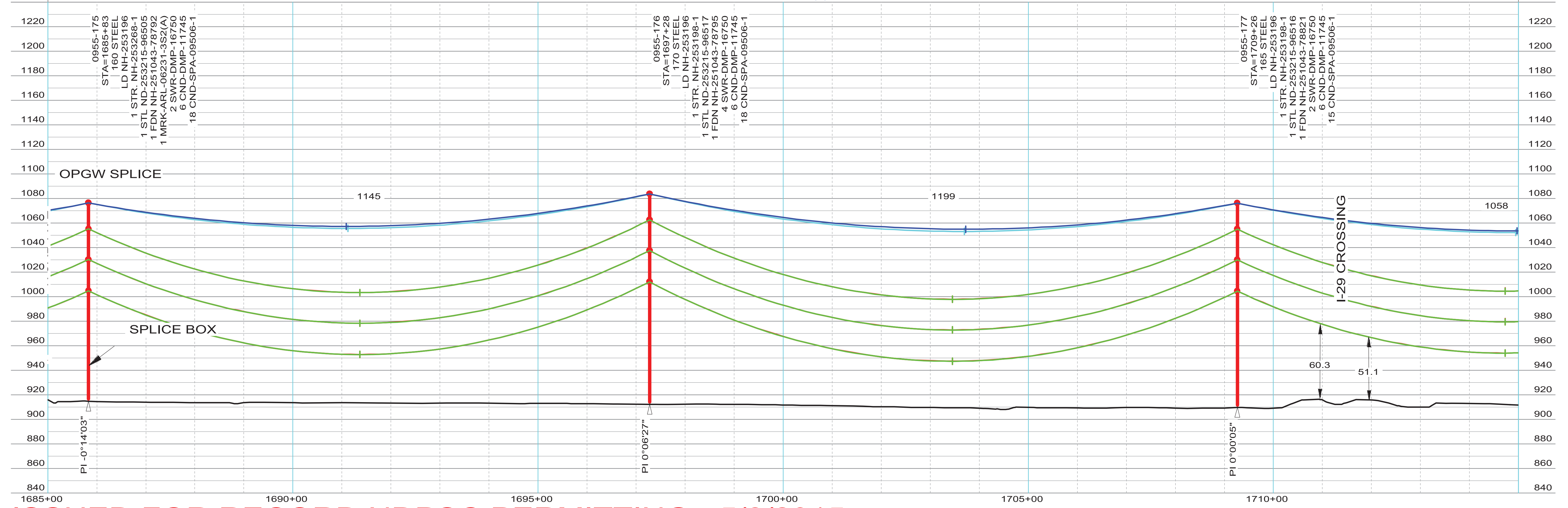


PROJECT DESIGN HAS ACCOMMODATED
 A 50 YEAR FLOOD EVENT FOR US ARMY CORPS
 PROPOSED DIVERSION PROJECT (TIEBACK
 LEVEE ND TO CHANNEL RECLAMATION REACHES MN)

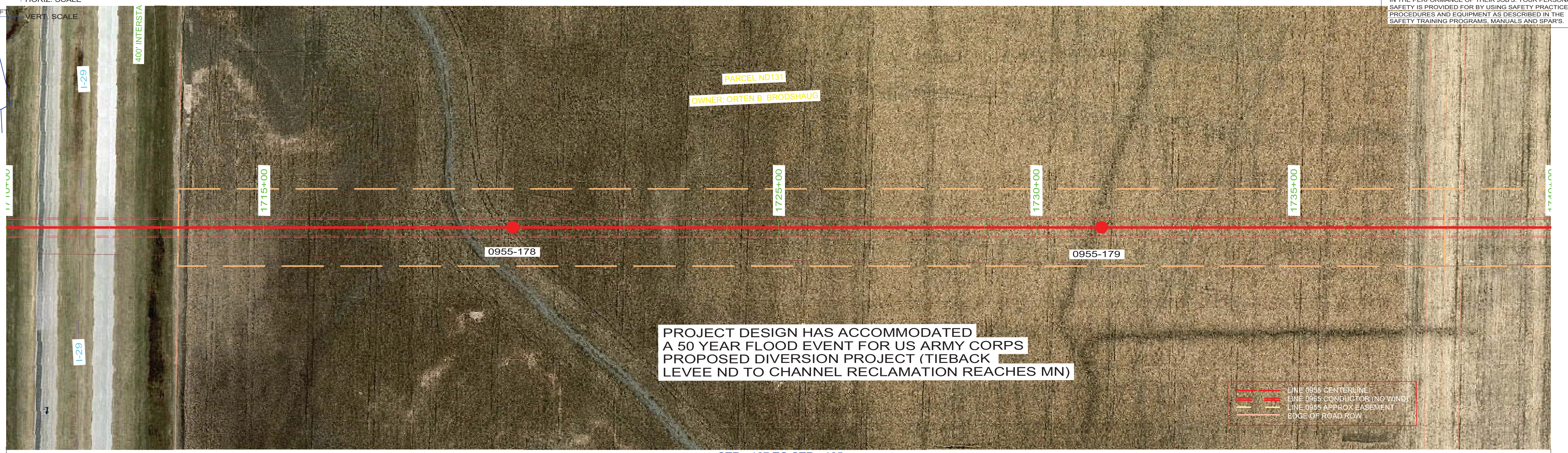
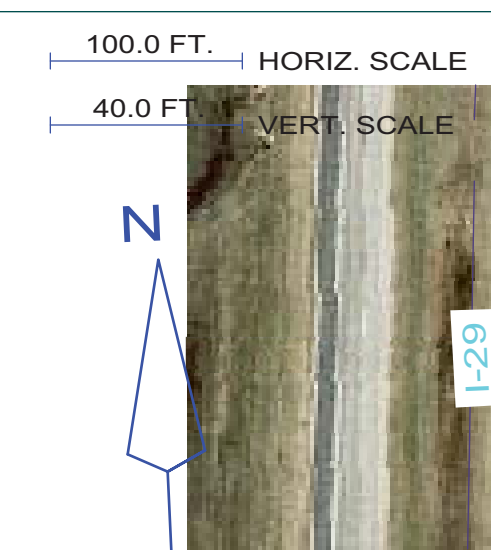
STR - 167 TO STR - 185
 COND: 6- 954 KCMIL ACSS/TW 20/7 @ 10315# D.T., RS = 1049FT (NORTH SIDE)
 OPGW: 1- AC-26/57/635-48 FIBER @ 7290# D.T., RS = 1049FT (NORTH SIDE)
 COND SAG TABLE NH-257384, OPGW SHIELD SAG TABLE NH-257385
 COND SHOWN AT 392 DEG. FINAL, SHIELD(S) SHOWN AT -20 DEG. INITIAL



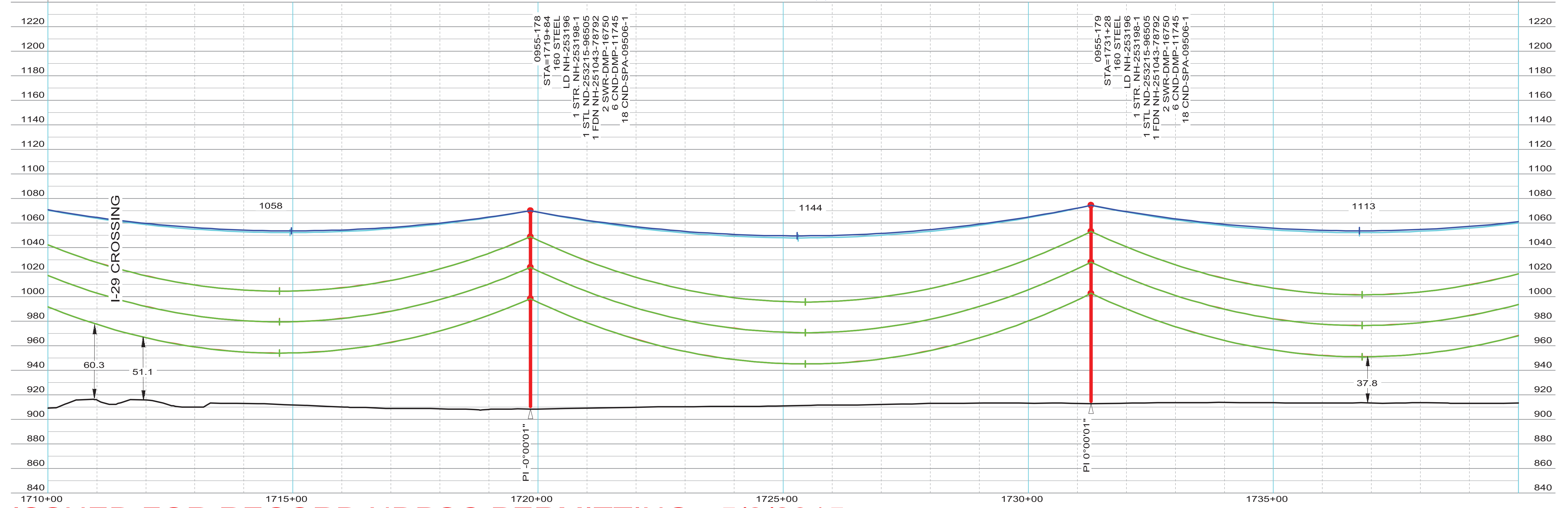
ISSUED FOR RECORD NDPSC PERMITTING - 5/8/2015

INTERNAL INFORMATION: DO NOT COPY OR DISTRIBUTE TO OTHERS WITHOUT EXPRESS WRITTEN CONSENT FROM XCEL ENERGY.

THIS MAP/DOCUMENT IS A TOOL TO ASSIST EMPLOYEES IN THE PERFORMANCE OF THEIR JOB'S. YOUR PERSONAL SAFETY IS PROVIDED FOR BY USING SAFETY PRACTICES, PROCEDURES AND EQUIPMENT AS DESCRIBED IN THE SAFETY TRAINING PROGRAMS, MANUALS AND SPARS.



STR - 167 TO STR - 185
COND: 6- 954 KCMIL ACSS/TW 20/7 @ 10315# D.T., RS = 1049FT (NORTH SIDE)
OPGW: 1- AC-26/57/635-48 FIBER @ 7290# D.T., RS = 1049FT (NORTH SIDE)
COND SAG TABLE NH-257384, OPGW SHIELD SAG TABLE NH-257385
COND SHOWN AT 392 DEG. FINAL, SHIELD(S) SHOWN AT -20 DEG. INITIAL



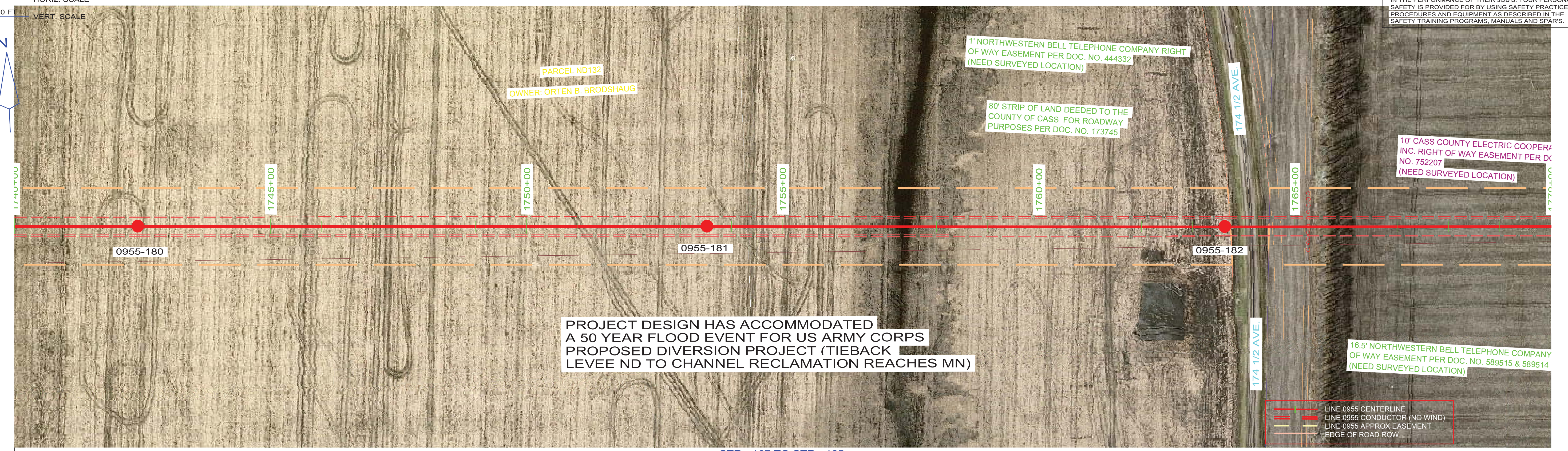
ISSUED FOR RECORD NDPSC PERMITTING - 5/8/2015

INTERNAL INFORMATION: DO NOT COPY OR DISTRIBUTE TO OTHERS WITHOUT EXPRESS WRITTEN CONSENT FROM XCEL ENERGY.

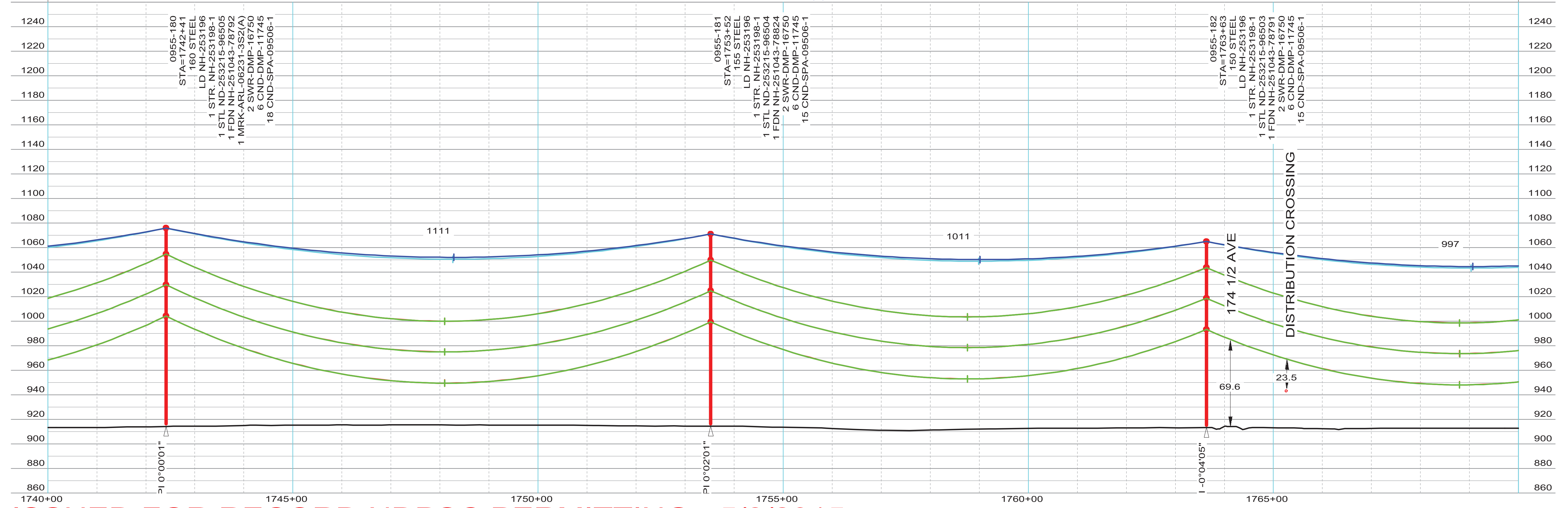
ENGINEERING DEPARTMENT, MINNEAPOLIS, MN	LINE NO. L0955	NH-253190-76	REV 1

THIS MAP/DOCUMENT IS A TOOL TO ASSIST EMPLOYEES IN THE PERFORMANCE OF THEIR JOB'S. YOUR PERSONAL SAFETY IS PROVIDED FOR BY USING SAFETY PRACTICES, PROCEDURES AND EQUIPMENT AS DESCRIBED IN THE SAFETY TRAINING PROGRAMS, MANUALS AND SPARS.

100.0 FT. HORIZ. SCALE
40.0 FT. VERT. SCALE

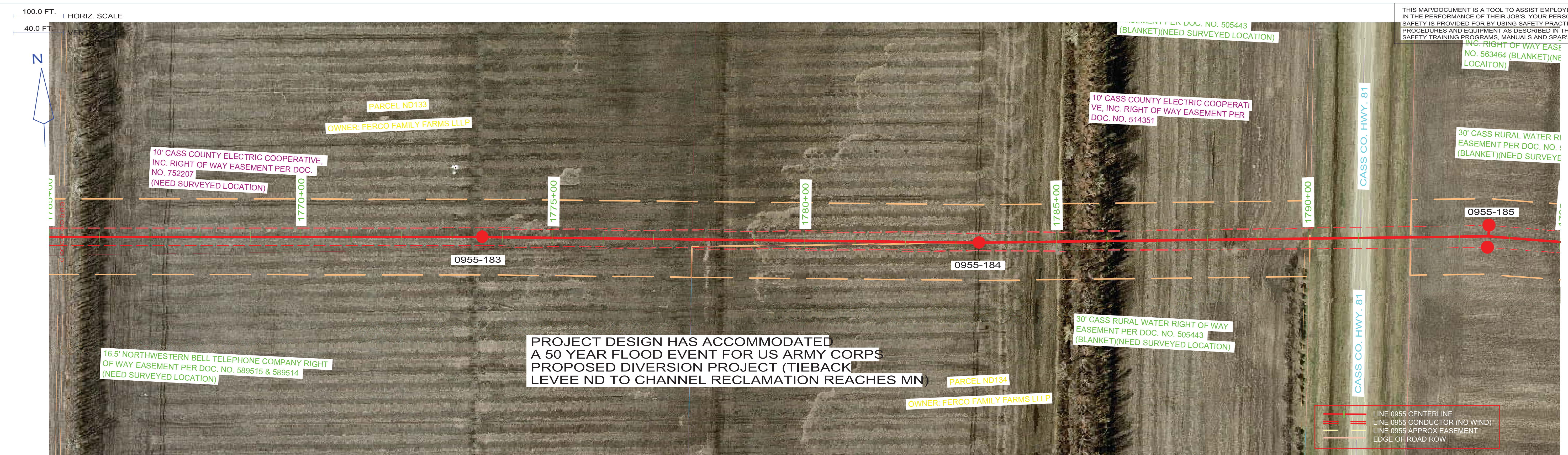


STR - 167 TO STR - 185
COND: 6- 954 KCMIL ACSS/TW 20/7 @ 10315# D.T., RS = 1049FT (NORTH SIDE)
OPGW: 1- AC-26/57/635-48 FIBER @ 7290# D.T., RS = 1049FT (NORTH SIDE)
COND SAG TABLE NH-257384, OPGW SHIELD SAG TABLE NH-257385
COND SHOWN AT 392 DEG. FINAL, SHIELD(S) SHOWN AT -20 DEG. INITIAL

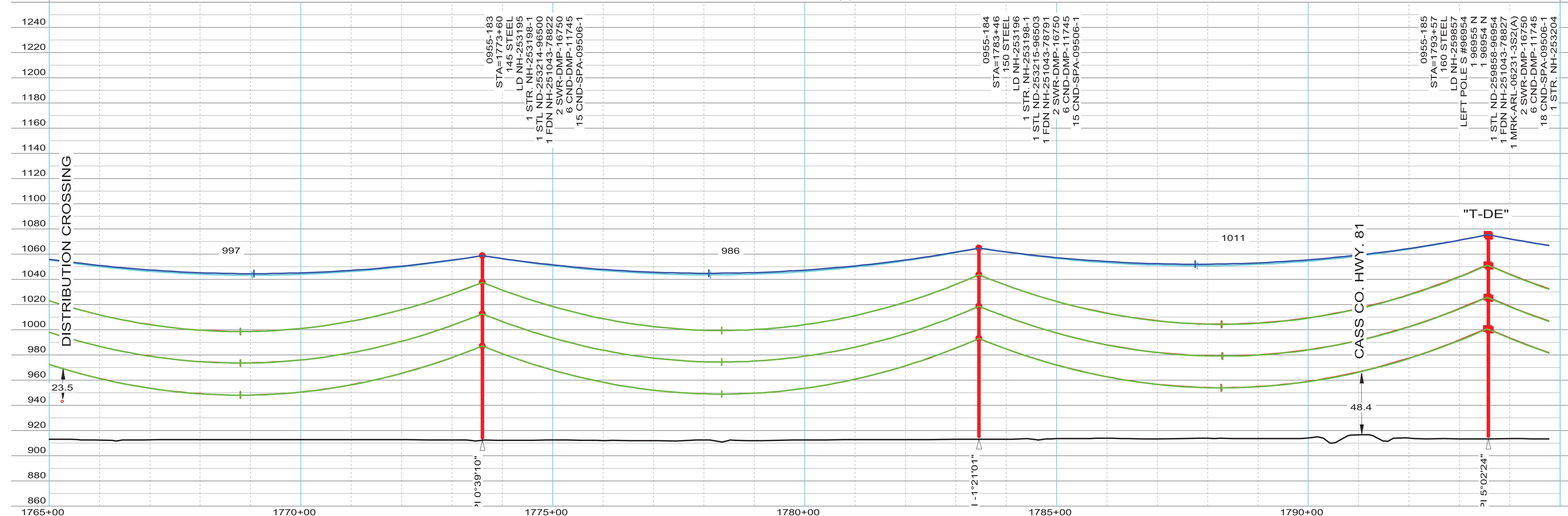


ISSUED FOR RECORD NDPSC PERMITTING - 5/8/2015

INTERNAL INFORMATION: DO NOT COPY OR DISTRIBUTE TO OTHERS WITHOUT EXPRESS WRITTEN CONSENT FROM XCEL ENERGY.



STR - 167 TO STR - 185
 COND: 6- 954 KCMIL ACSS/TW 20/7 @ 10315# D.T., RS = 1049FT (NORTH SIDE)
 OPGW: 1- AC-26/57/635-48 FIBER @ 7290# D.T., RS = 1049FT (NORTH SIDE)
 COND SAG TABLE NH-257384, OPGW SHIELD SAG TABLE NH-257385
 COND SHOWN AT 392 DEG. FINAL, SHIELD(S) SHOWN AT -20 DEG. INITIAL

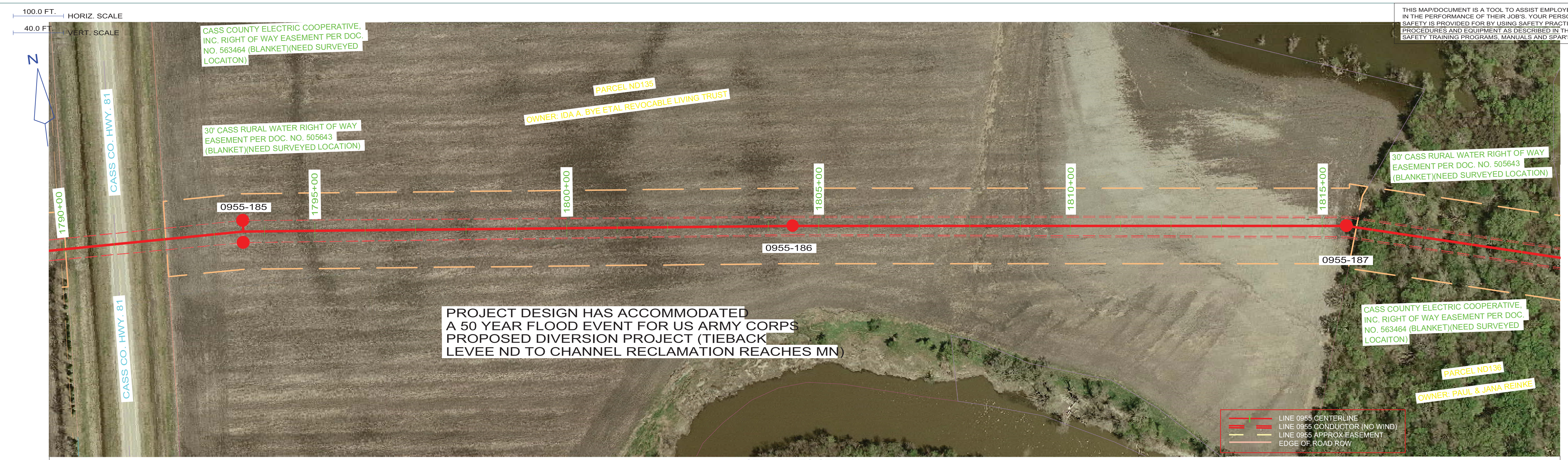


ISSUED FOR RECORD NDPSC PERMITTING - 5/8/2015

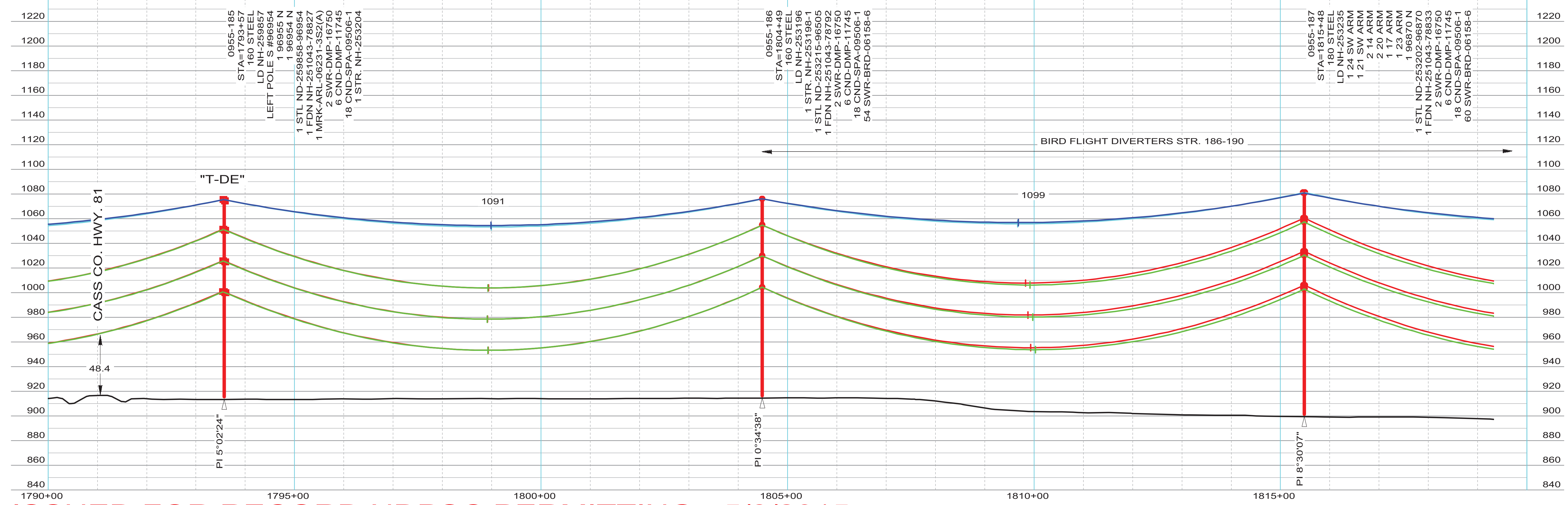
INTERNAL INFORMATION: DO NOT COPY OR DISTRIBUTE TO OTHERS WITHOUT EXPRESS WRITTEN CONSENT FROM XCEL ENERGY.

ENGINEERING DEPARTMENT, MINNEAPOLIS, MN	LINE NO. L0955	NH-253190-78	REV 1
---	----------------	--------------	-------

THIS MAP/DOCUMENT IS A TOOL TO ASSIST EMPLOYEES IN THE PERFORMANCE OF THEIR JOB'S. YOUR PERSONAL SAFETY IS PROVIDED FOR BY USING SAFETY PRACTICES, PROCEDURES AND EQUIPMENT AS DESCRIBED IN THE SAFETY TRAINING PROGRAMS, MANUALS AND SPARS.



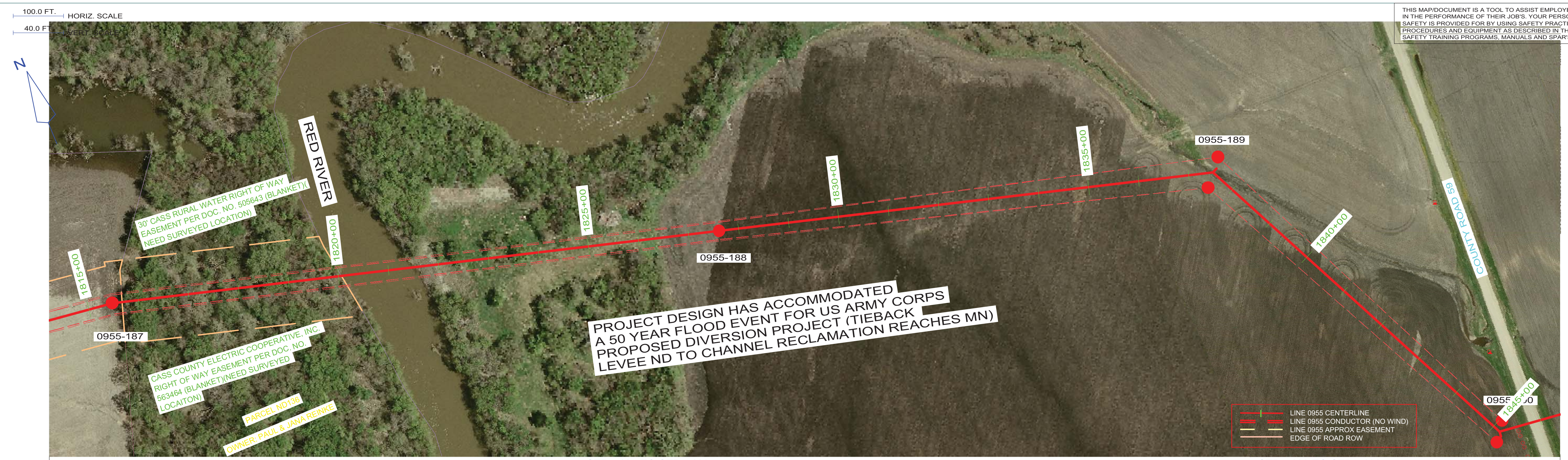
STR - 185 TO STR - 189
 COND: 6- 954 KCMIL ACSS/TW 20/7 @ 10400# D.T., RS = 1110FT (NORTH SIDE)
 OPGW: 1- AC-26/57/635-48 FIBER @ 7365# D.T., RS = 1110FT (NORTH SIDE)
 COND SAG TABLE NH-257386, OPGW SHIELD SAG TABLE NH-257387
 COND SHOWN AT 392 DEG. FINAL, SHIELD(S) SHOWN AT -20 DEG. INITIAL



ISSUED FOR RECORD NDPSC PERMITTING - 5/8/2015

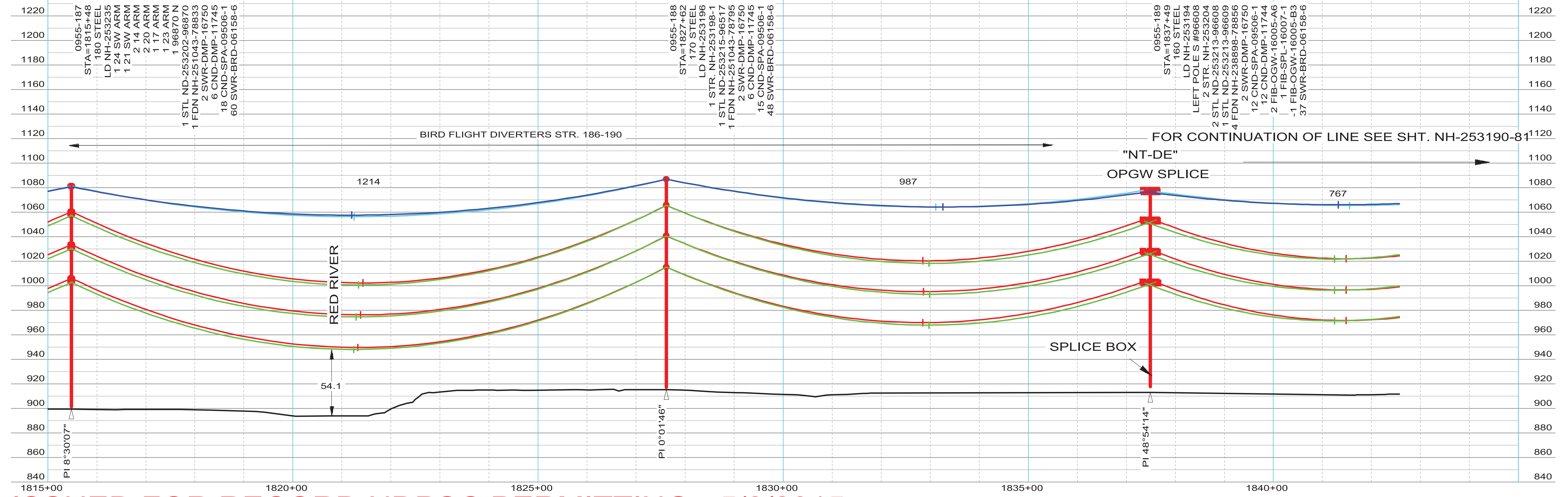
INTERNAL INFORMATION: DO NOT COPY OR DISTRIBUTE TO OTHERS WITHOUT EXPRESS WRITTEN CONSENT FROM XCEL ENERGY.

THIS MAP/DOCUMENT IS A TOOL TO ASSIST EMPLOYEES IN THE PERFORMANCE OF THEIR JOB'S. YOUR PERSONAL SAFETY IS PROVIDED FOR BY USING SAFETY PRACTICES, PROCEDURES AND EQUIPMENT AS DESCRIBED IN THE SAFETY TRAINING PROGRAMS, MANUALS AND SPARS.



STR - 185 TO STR - 189
 COND: 6- 954 KCMIL ACSS/TW 20/7 @ 10400# D.T., RS = 1110FT (NORTH SIDE)
 OPGW: 1- AC-26/57/635-48 FIBER @ 7365# D.T., RS = 1110FT (NORTH SIDE)
 COND SAG TABLE NH-257386, OPGW SHIELD SAG TABLE NH-257387
 COND SHOWN AT 392 DEG. FINAL, SHIELD(S) SHOWN AT -20 DEG. INITIAL

STR - 189 TO STR - 190
 COND: 6- 954 KCMIL ACSS/TW 20/7 @ 9385# D.T., RS = 766FT (EAST SIDE)
 OPGW: 1- AC-26/57/635-48 FIBER @ 6480# D.T., RS = 768FT (EAST SIDE)
 COND SAG TABLE NH-257386, OPGW SHIELD SAG TABLE NH-257387
 COND SHOWN AT 392 DEG. FINAL, SHIELD(S) SHOWN AT -20 DEG. INITIAL



ISSUED FOR RECORD NDPSC PERMITTING - 5/8/2015

INTERNAL INFORMATION: DO NOT COPY OR DISTRIBUTE TO OTHERS WITHOUT EXPRESS WRITTEN CONSENT FROM XCEL ENERGY.