

Lein, Jerry R.

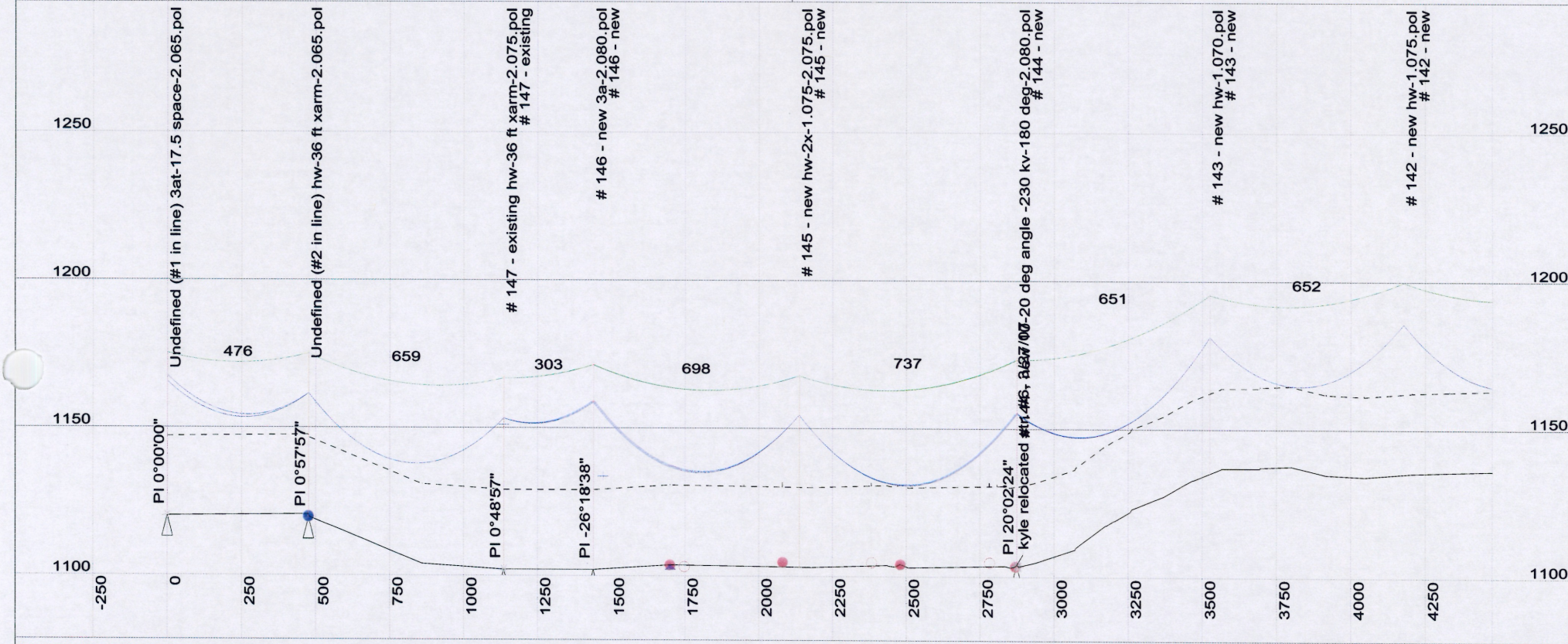
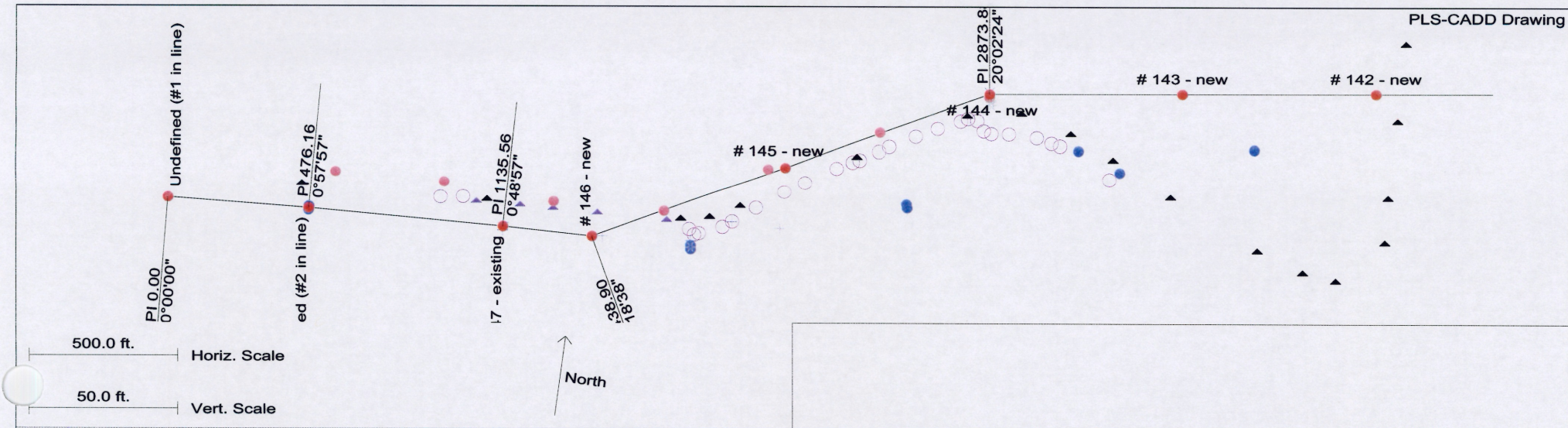
From: TLangston@otpc.com
Sent: Tuesday, March 04, 2008 8:22 AM
To: Lein, Jerry R.
Subject: FW: Plan/Profile - grass lake
Attachments: plan-profile 030408.pdf

Jerry,

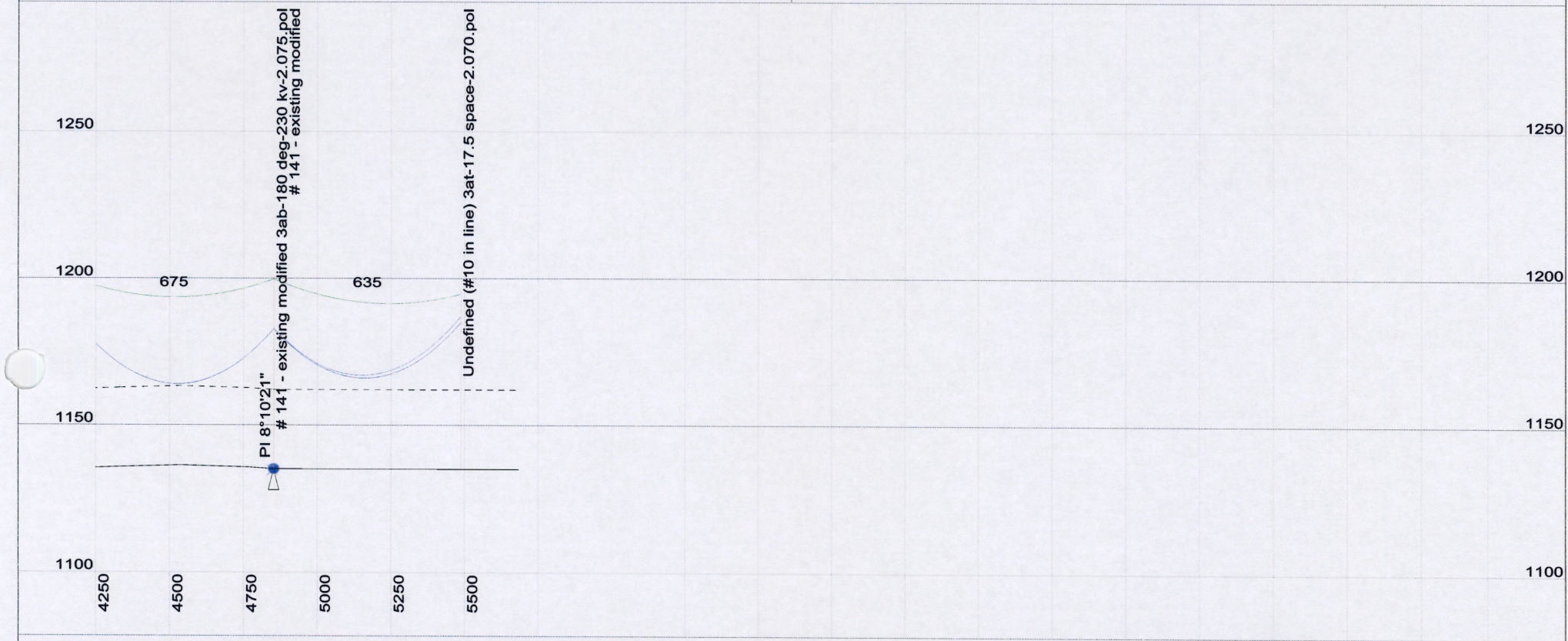
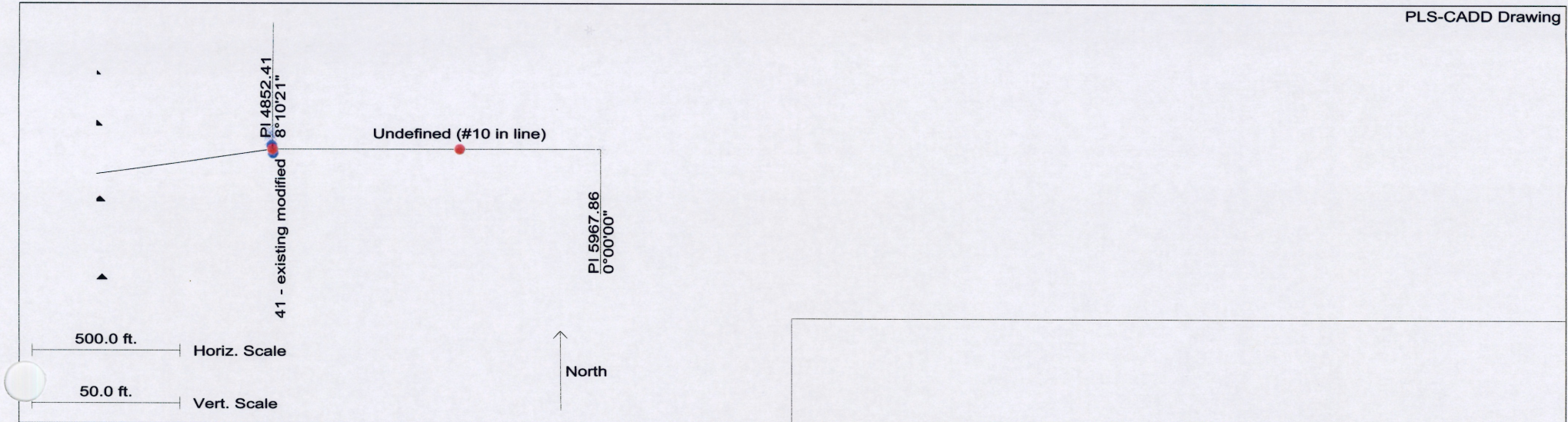
Here is the plan-profile as per your request.

Todd

> -----Original Message-----
> From: Olson, Steve
> Sent: Tuesday, March 04, 2008 8:04 AM
> To: Langston, Todd
> Subject: Plan/Profile - grass lake
>
>
>
> > <<plan-profile 030408.pdf>>



Conductor Type: Sagten Cond. Limit Factor:		Final Catenary Drawn @: Initial Catenary Cold @:		Rating Span: Limiting tension @:	
SCALES: PLAN	HORIZONTAL		PROFILE		
ELECTRONIC FIELD BOOK:	TRANSIT BOOK NO.		LEVEL BOOK NO.		
DRAWN BY ole	SURVEYED BY	CHECKED BY ole	APPROVED BY ole		
DATED 02/12/07	DATED	DATED 02/12/07	DATED 02/12/07	PROJECT: Grass Lake re-route	
Hankinson-Forman 230 kV					
PLAN AND PROFILE					
V:\PLS\PROJECTS\GRASS LAKE 230 KV\XYZ1			TL NO.		
C.A.D. PATH:			C.A.D. FILE: GRASS LAKE-REVISED-030308		
FROM STATION	TO STATION		SHEET NO. 1	OF 2	SHEETS



Conductor Type: Sagten Cond. Limit Factor:		Final Catenary Drawn @: Initial Catenary Cold @:		Ruling Span: Limiting tension @:	
SCALES: PLAN	HORIZONTAL		PROFILE		
ELECTRONIC FIELD BOOK:		TRANSIT BOOK NO.		LEVEL BOOK NO.	
DRAWN BY ole		SURVEYED BY		CHECKED BY ole	
DATED 02/12/07		DATED		DATED 02/12/07	
				APPROVED BY ole	
				DATED 02/12/07	
Hankinson-Forman 230 kv					
PROJECT: Grass Lake re-route					
PLAN AND PROFILE					
V:\PLS\PROJECTS\IGRASS LAKE 230 KV\XYZ1 TL NO.					
C.A.D. PATH: C.A.D. FILEGRASS LAKE-REVISED-030308					
FROM STATION		TO STATION		SHEET NO 2 OF 2 SHEETS	