

Management of Discovered Historic Contamination: Internal Communication Guidelines, Roles and Responsibilities

Operations Contact (PLM):

- Notifies Regional Manager upon discovery of historic contamination.
- Notifies Regional Environmental Contact upon discovery of historic contamination.
- May provide inspection oversight and related support throughout excavation activities.

Project Inspector:

- Notifies Operations (PLM) upon discovery of suspected historic contamination.

Project Environmental Contact (PEC):

- Receives notifications and updates from Regional Environmental Contact.

Regional Environmental Contact (REC):

- Receives notification from Operations regarding discovery of historic contamination.
- Notifies Duty Officer immediately upon receipt of notification from Operations.
- Coordinates and manages oversight of third-party consulting support.
- Assists in development of remedial action plan in accordance with Agency recommendations.
- Acts as primary Agency liaison throughout execution of remedial action plan.

Construction Project Manager:

- Receives periodic updates through Project Environmental Contact.

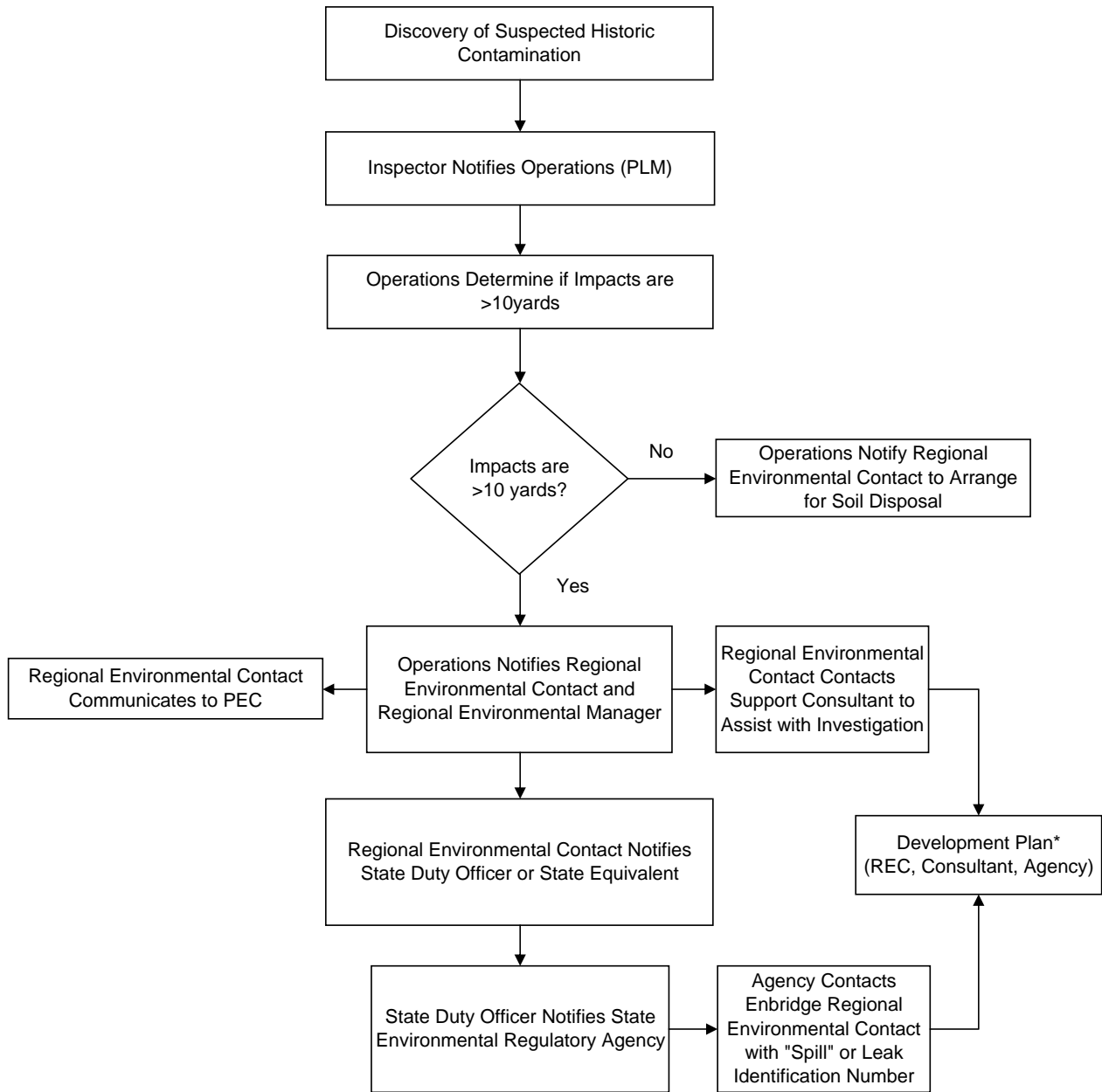
Regional Management:

- Receives initial notification from Operations upon discovery of historic contamination.
- Receives updates from Regional Environmental Contact regarding progress of remedial action.

External Environmental Consultant:

- Is enlisted by Regional Environmental Contact to provide remedial oversight and related support.
- Prepares final closure report for submittal to Agency.

**Management of Discovered Historic Contamination:
Internal Standard Operating Procedure
October 2007**



*Refer to Response Action Plan Flow Chart