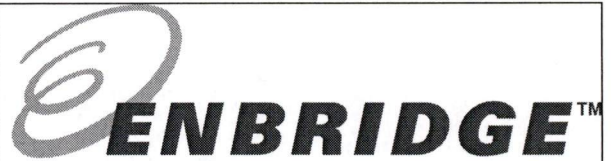




**ROONEY ENGINEERING,
INC.**
Engineering for the Energy
Industry



Weekly Construction Progress Report

Enbridge Pipelines (North Dakota) LLC

Week of: Mar. 6, 2009

Case No. PU-07-791

	Name	Company	Office	Cell
Supervising Project Manager	Edward Kelly	Rooney Engineering	303-705-9325	303-594-6157
Supervisor - Construction Services:	Trent Mattick	Enbridge	701-857-0803	701-721-3356

Brief Description of Weekly Activities:

Alexander Station

- Nothing to report.

Trenton Station

- Nothing to report.

Beaver Lodge Station

- Second ring installation complete.

Stanley Station

- Nothing to report.

Blaisdell Station

- Nothing to report.

Minot Station

- Nothing to report – Work stopped until spring.

Denbigh Station

- Mechanical shop fabrication complete.

Pleasant Lake Station

- Nothing to report – Work stopped until spring.

Penn Station

- Nothing to report – Work stopped until spring.

Bartlett Station

- Mechanical shop fabrication approximately 50% done.

Larimore Station

- Nothing to report.

Specific Activity on Project			
Description	% Complete	Description	% Complete
Alexander Station		Trenton Station	
Civil	0	Civil	0
Mechanical	0	Mechanical	0
Electrical	0	Electrical	0
Clean-up	0	Clean-up	0
Beaver Lodge Station		Stanley Station	
Civil	35	Civil	35
Mechanical	17	Mechanical	45
Electrical	0	Electrical	0
Clean-up	0	Clean-up	0
Blaisdell Station		Minot Station	
Civil	0	Civil	60
Mechanical	0	Mechanical	40
Electrical	0	Electrical	0
Clean-up	0	Clean-up	0
Denbigh Station		Pleasant Lake Station	
Civil	80	Civil	70
Mechanical	50	Mechanical	60
Electrical	0	Electrical	45
Clean-up	0	Clean-up	0
Penn Station		Bartlett Lake Station	
Civil	70	Civil	60
Mechanical	45	Mechanical	25
Electrical	0	Electrical	0
Clean-up	0	Clean-up	0
Larimore Station			
Civil	70		
Mechanical	45		
Electrical	30		
Clean-up	0		

Significant Work Activity for next week:

Alexander Station

- Nothing to report.

Trenton Station

- Nothing to report.

Beaver Lodge Station

- Get started on internal floating roof fabrication.

Stanley Station

- Nothing to report. Field work on hold until weather breaks. Tentatively schedule to tie-in to main April 1.

Blaisdell Station

- Nothing to report.

Minot Station

- Nothing to report.

Denbigh Station

- Start x-ray and hydrotest.

Pleasant Lake Station

- Nothing to report.

Penn Station

- Piping and pump installation to commence upon completion of Larimore.

Bartlett Station

- Complete prefabrication work.

Larimore Station

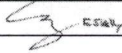
- Mechanical work to start in the field 3/9/09 with setting pump and starting on connecting piping.

Comments:

Name

Date

Edward J. Kelly



3/06/09







CAUTION



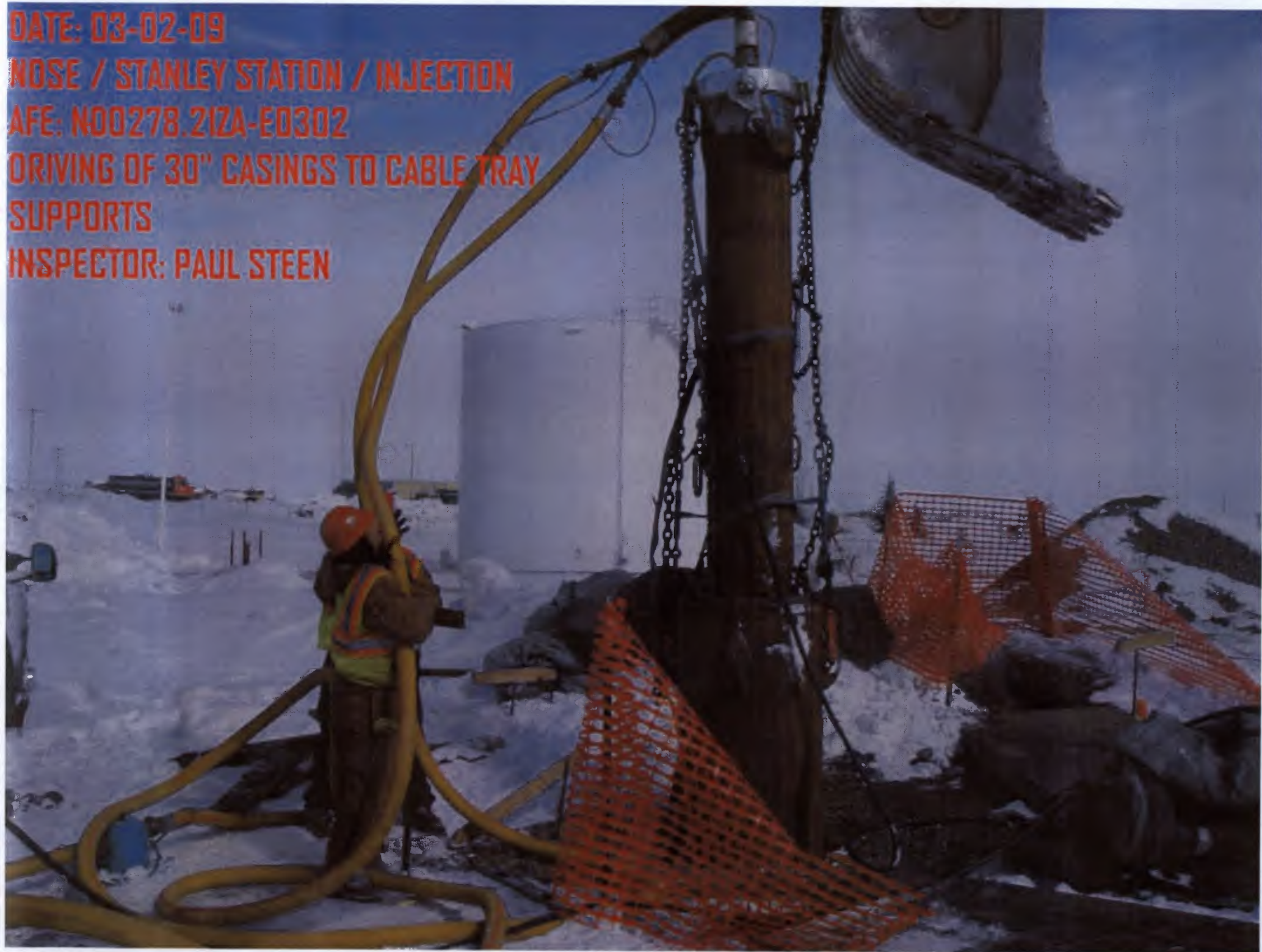
DATE: 03-02-09

NOSE / STANLEY STATION / INJECTION

A/E: N00278.21ZA-ED302

DRIVING OF 30" CASINGS TO CABLE TRAY
SUPPORTS

INSPECTOR: PAUL STEEN



DATE: 02-24-09

NOSE / STANLEY STATION / INJECTION

A/E: NDD278.21ZA-E0302

CONCRETE POUR TO METER SKID PIERS

INSPECTOR: PAUL STEEN

