

LAW OFFICES OF
FLECK, MATHER & STRUTZ, LTD.

400 East Broadway, Suite 600, Wells Fargo Bank Building
P. O. Box 2798, Bismarck, North Dakota 58502

Telephone: 701-223-6585 Facsimile: 701-222-4853 E-Mail: fms@flecklaw.com Website: www.flecklaw.com

GARY R. WOLBERG+
PAUL W. SUMMERS
BRIAN R. BJELLA*
JOHN W. MORRISON
CURTIS L. WIKE*
CRAIG C. SMITH^{o^}

ALSO LICENSED IN:

* Minnesota
o Montana
+ Iowa
^ Wyoming
□ Nebraska

Hand Delivery

Ms. Illona Jeffcoat-Sacco
Executive Secretary
NORTH DAKOTA PUBLIC
SERVICE COMMISSION
600 E. Boulevard, Dept. 408
Bismarck, ND 58505-0480

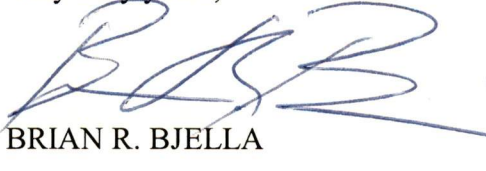
Dear Ms. Jeffcoat-Sacco:

In re: Ashtabula Wind, LLC
Electric Generation/Wind - Barnes County
Siting Application
Case No. PU-08-32
Our File No. 1248-28641

Enclosed for filing in the captioned matter please find the original and ten copies of revised Figures 1, 8, 9 and 13-16. Please substitute for the Figures submitted in the Application. These Figures reflect minor changes to a few turbine locations and of the collection system routing.

Please call should you have any questions.

Very truly yours,



BRIAN R. BJELLA

bw
Enc.

April 25, 2008

SHANE A. HANSON
MICHAEL C. WALLER^o
PETRA H. MANDIGO^o
CHRISTOPHER D. FRIEZ
CRAIG B. BURNS
WADE C. MANN

ERNEST R. FLECK
(1921-1995)
RUSSELL R. MATHER
(RETIRED)
WILLIAM A. STRUTZ
(RETIRED)

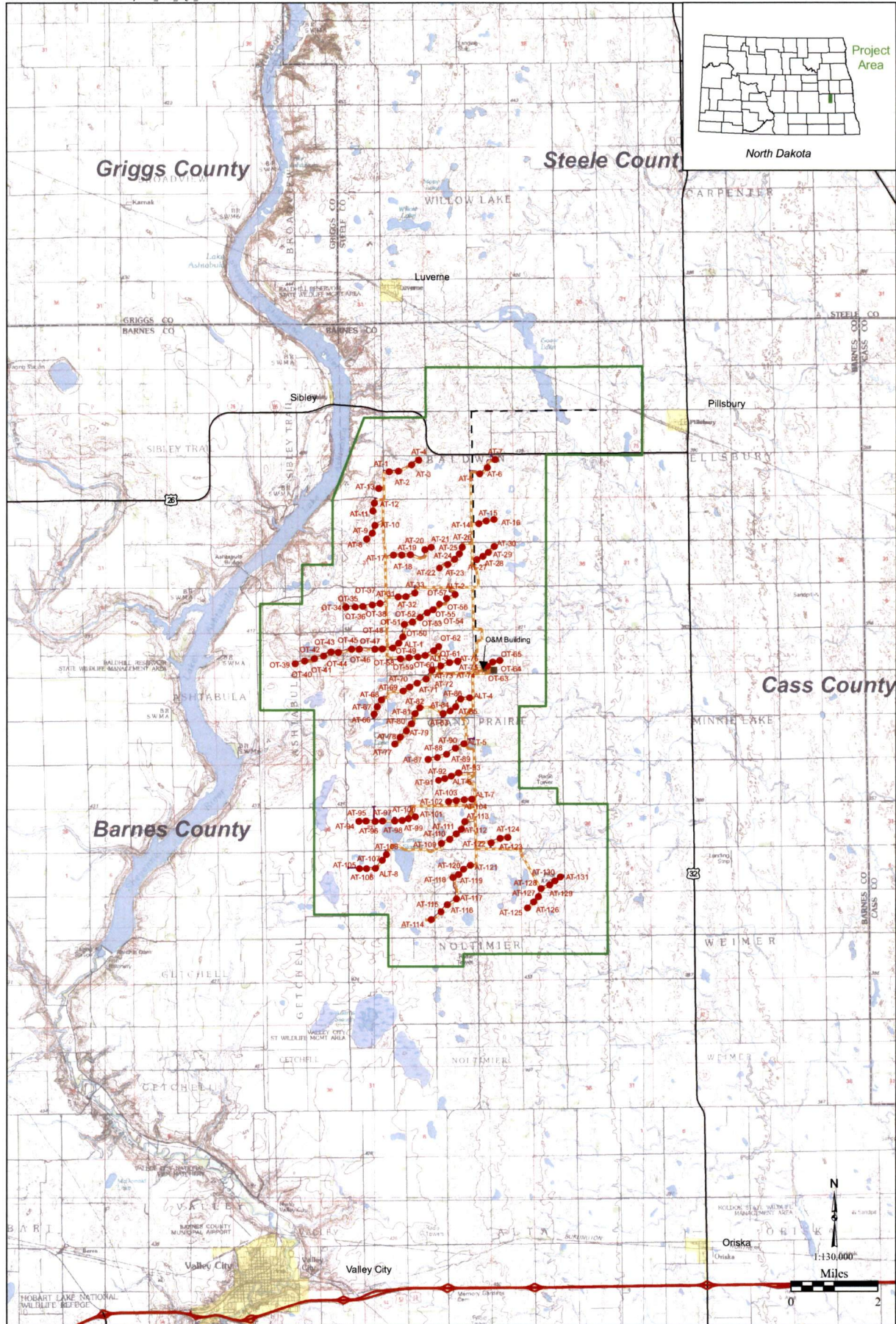
RECEIVED

APR 25 2008

PUBLIC SERVICE COMMISSION

18 **PU-08-32** Filed: 4/25/2008 Pages: 8
Application Revised Figures 1, 8, 9 and 13-16

Ashtabula Wind, LLC
Brian Bjella, Attorney

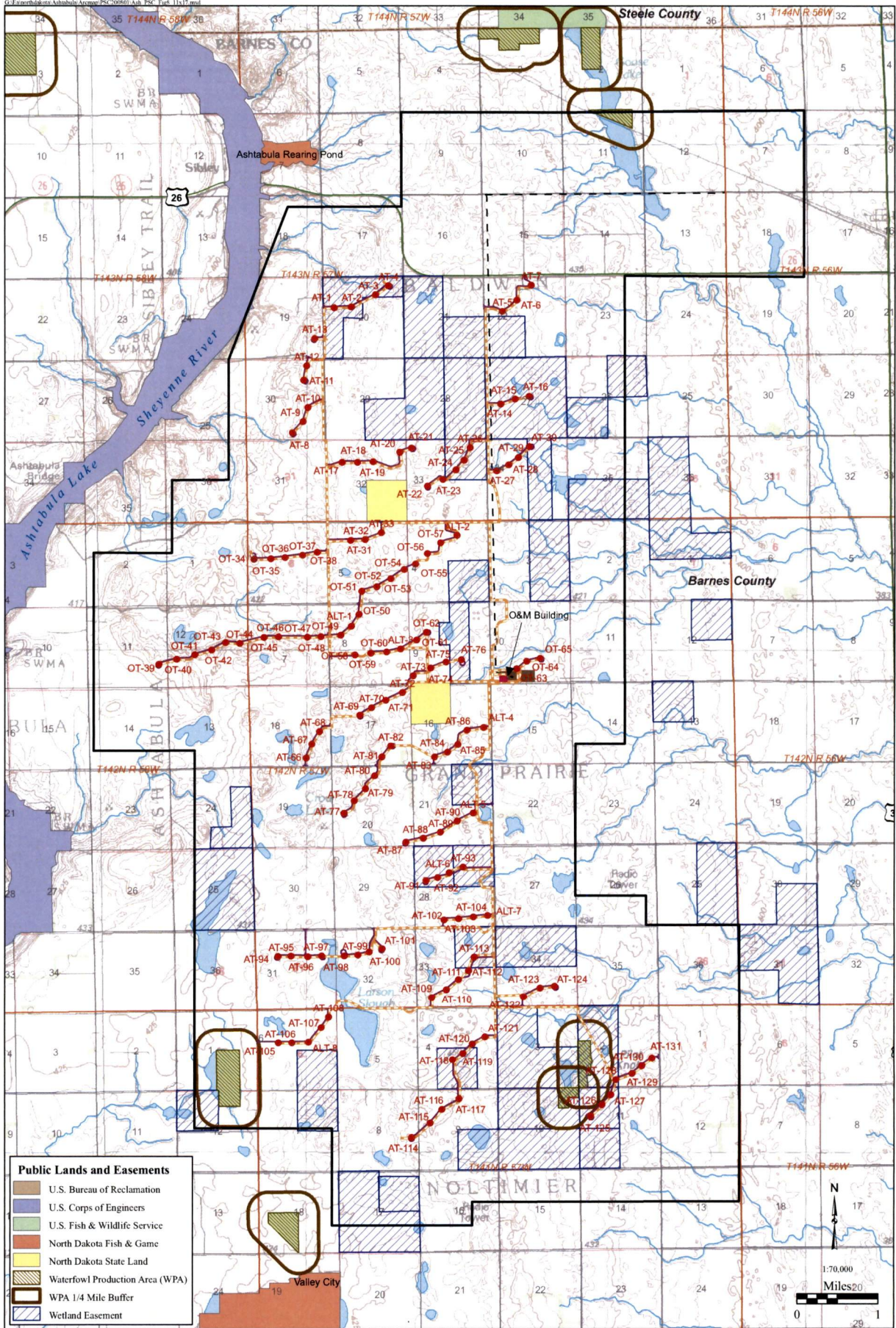


April 2008
Figure 1



- GE Turbine Array (4-10-08)
- Access Road (4-10-08)
- - - Collection Line (4-24-08)
- - - Transmission Line (2-19-08)
- Laydown Area
- O&M Building
- Substation
- Project Boundary (1 mile buffer)

**Project and Vicinity Map - GE Turbine Array
Barnes County, North Dakota
Ashtabula Wind Farm**



Public Lands and Easements

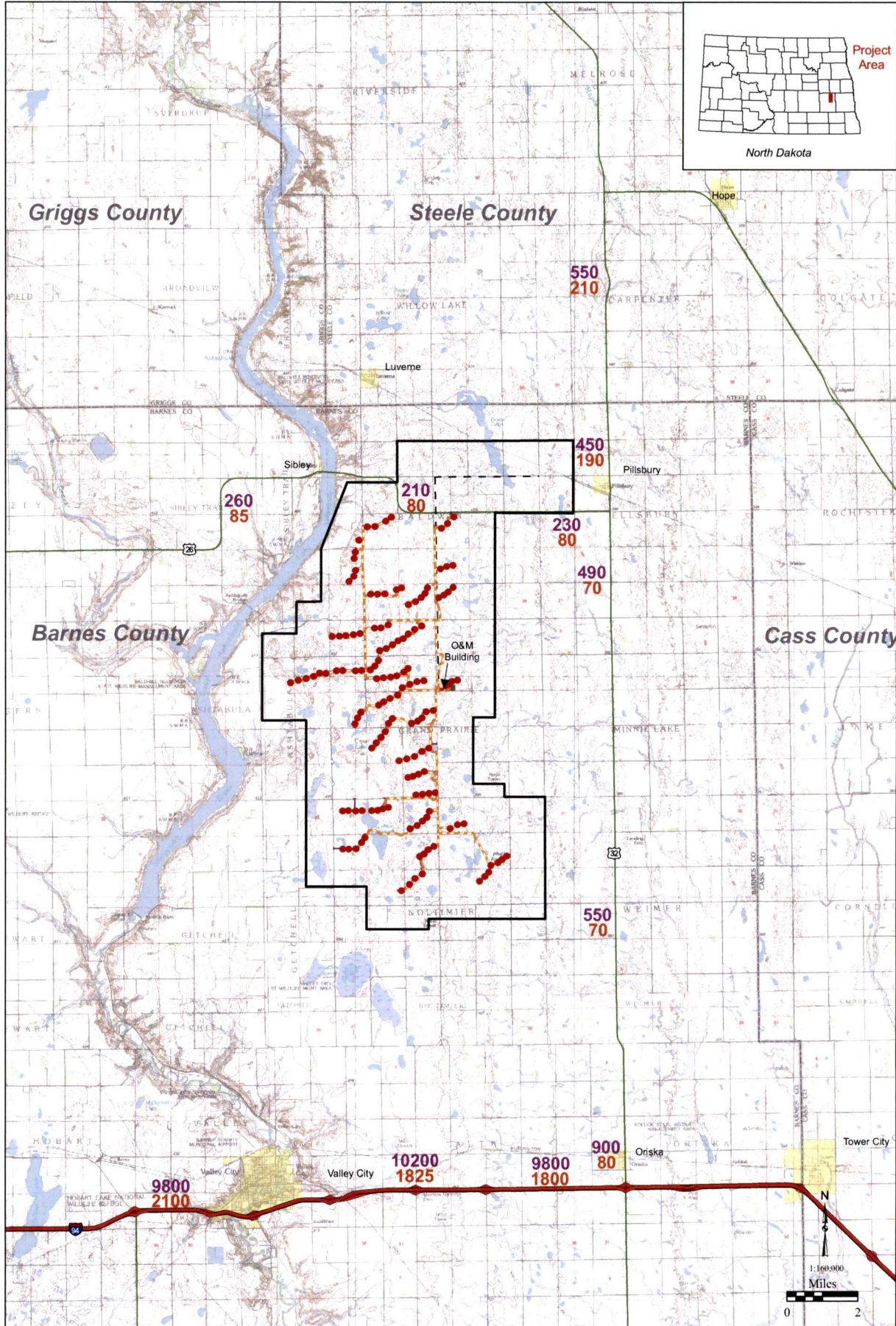
- U.S. Bureau of Reclamation
- U.S. Corps of Engineers
- U.S. Fish & Wildlife Service
- North Dakota Fish & Game
- North Dakota State Land
- Waterfowl Production Area (WPA)
- WPA 1/4 Mile Buffer
- Wetland Easement

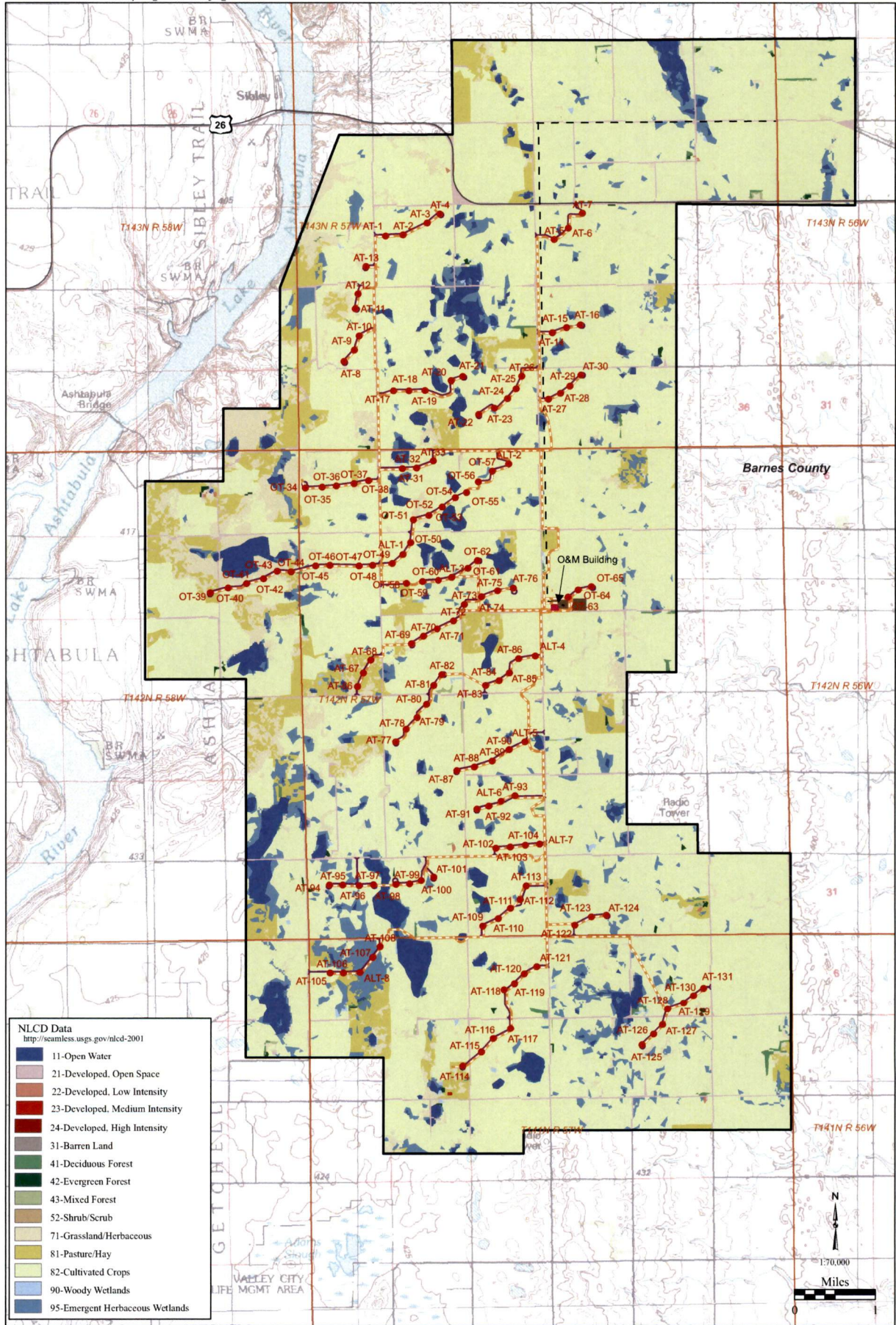
- GE Turbine Location (4-10-08)
- Transmission Line (2-19-08)
- Substation
- Laydown Area
- Project Boundary
- O&M Building
- Access Road (4-10-08)
- Collection Line (4-24-08)



April 2008
Figure 8

**Public Lands and Easements
Barnes County, North Dakota
Ashtabula Wind Farm**



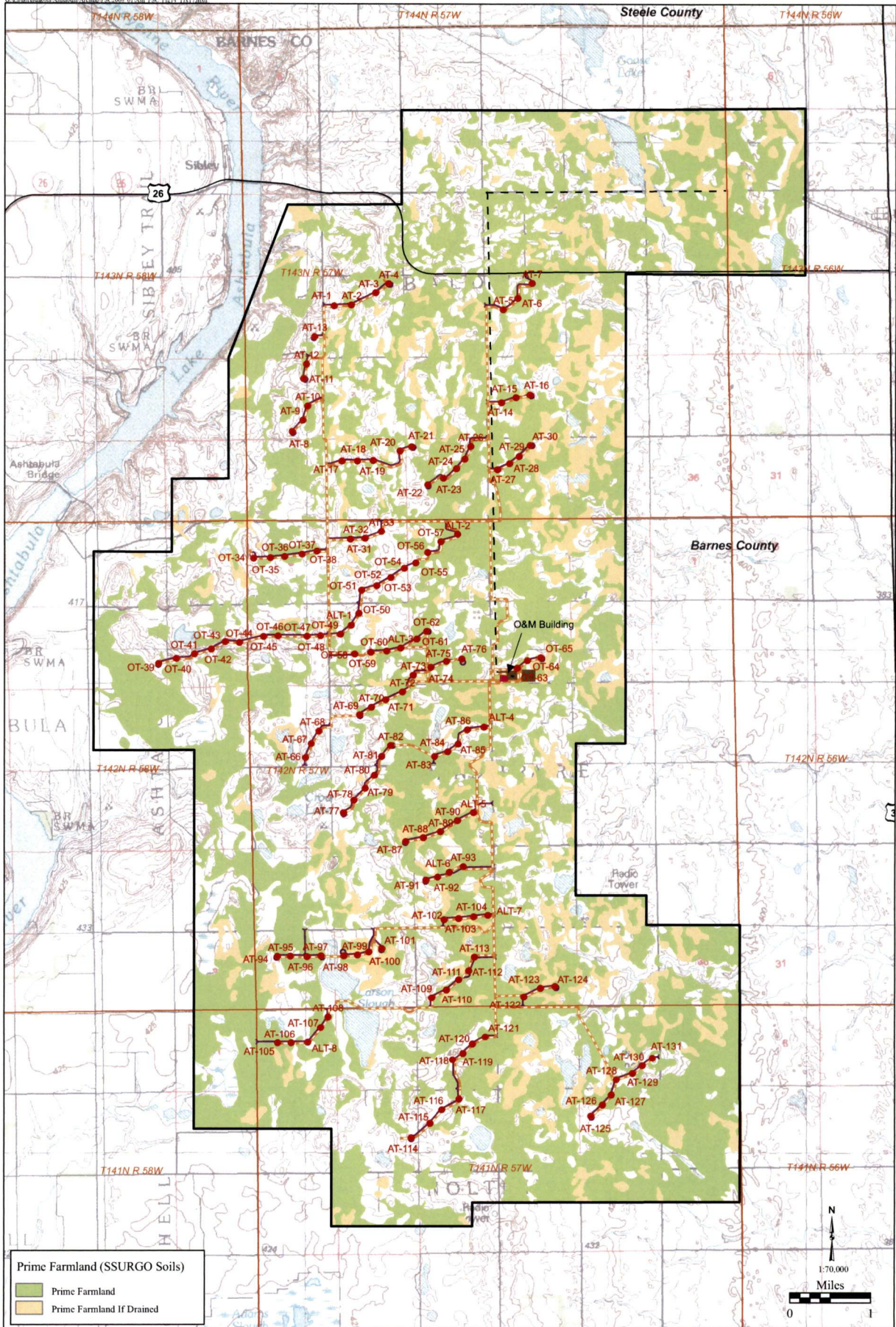


April 2008
 Figure 13



- GE Turbine Location (4-10-08)
- Access Road (4-10-08)
- Collection Line (4-24-08)
- Transmission Line (2-19-08)
- Laydown Area
- O&M Building
- Substation
- Project Boundary

Land Cover Map
Barnes County, North Dakota
 Ashtabula Wind Farm



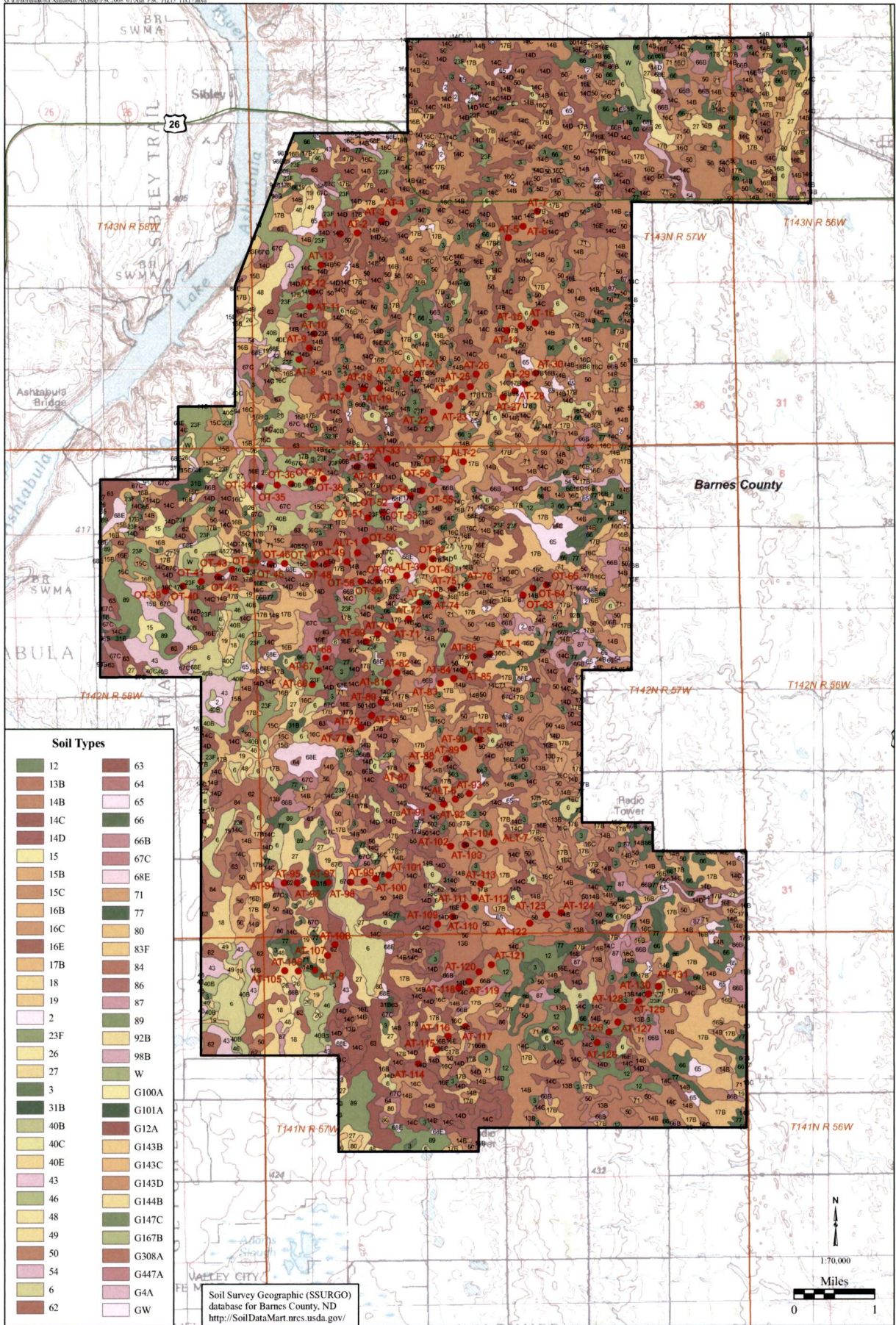
April 2008

Figure 14

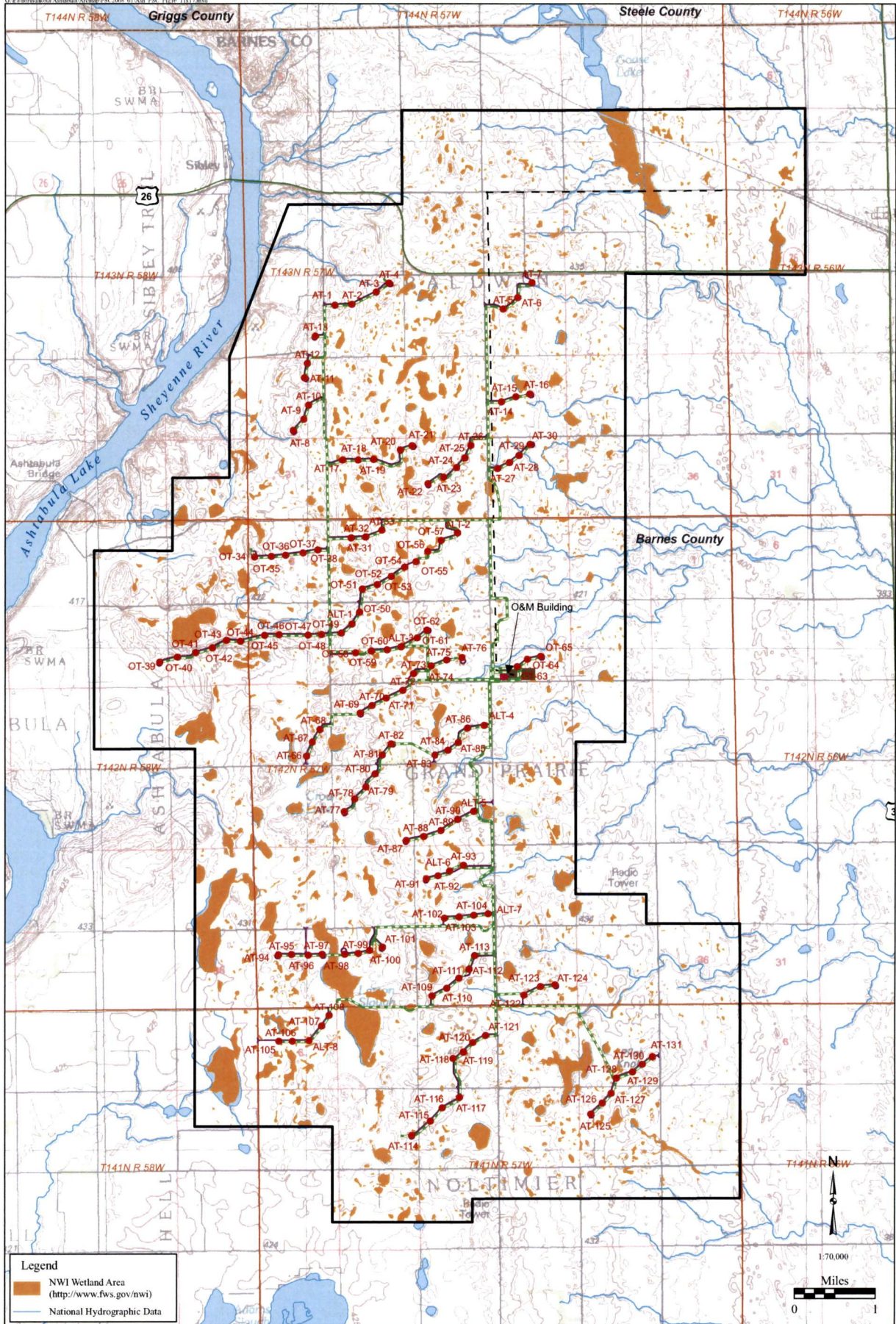


- GE Turbine Array (4-10-08)
- Access Road (4-10-08)
- - - Collection Line (4-28-07)
- Transmission Line (2-19-08)
- Laydown Area
- O&M Building
- Substation
- Project Boundary

Prime Farmland Soil Distribution Map
Barnes County, North Dakota
 Ashtabula Wind Farm



● GE Turbine Array (4-10-08)
 □ Project Boundary



April 2008
Figure 16



- GE Turbine Array (4-10-08)
- Access Road (4-10-08)
- Collection Line (4-24-08)
- Transmission Line (2-19-08)
- Laydown Area
- O&M Building
- Substation
- Project Boundary

National Wetlands Inventory and Surface Waters Map - Barnes County, North Dakota
Ashtabula Wind Farm