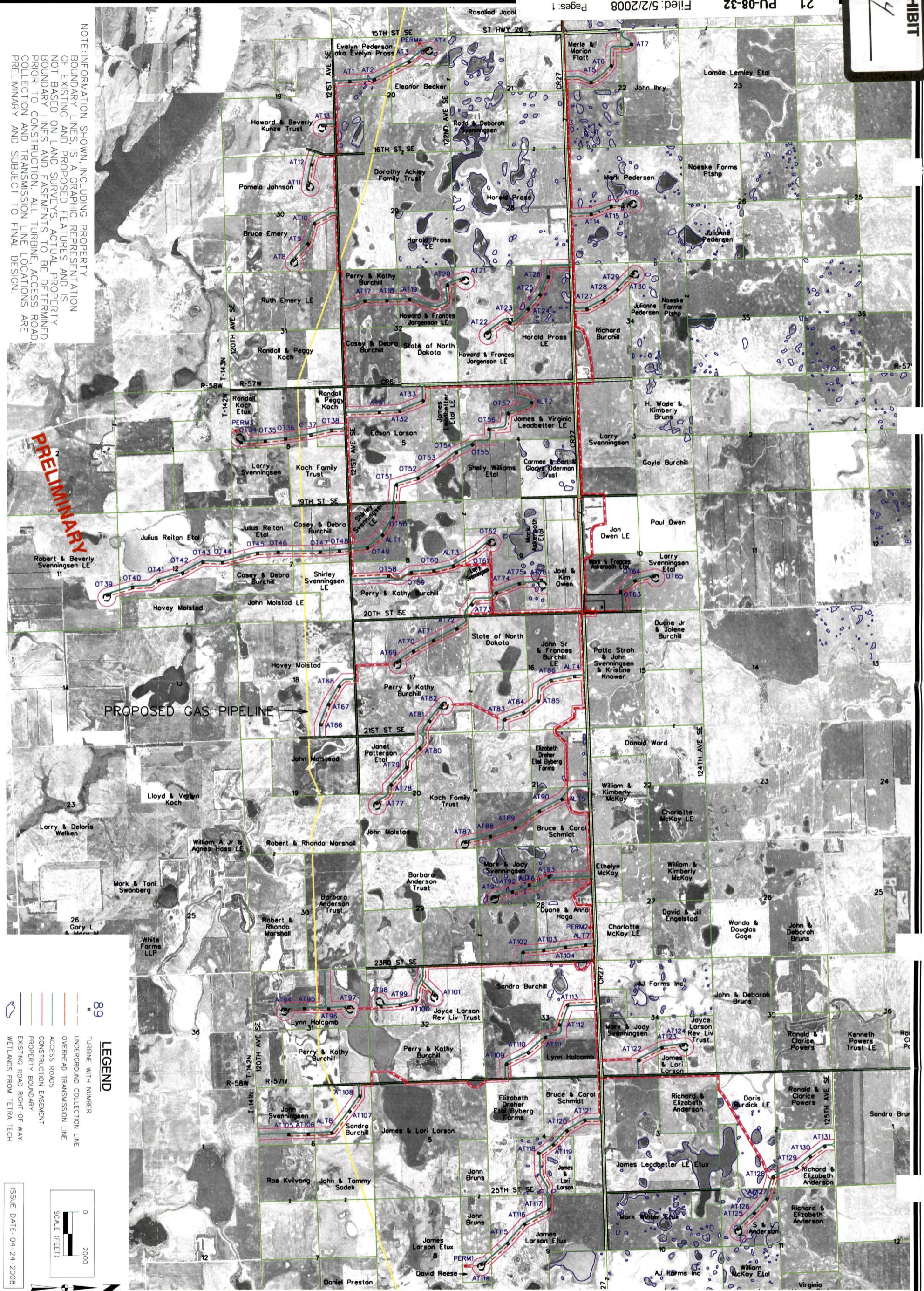


NOTE: INFORMATION SHOWN, INCLUDING PROPERTY BOUNDARY LINES, IS A GRAPHIC REPRESENTATION OF EXISTING AND PROPOSED FEATURES AND IS NOT BASED ON LAND SURVEYS. ACTUAL PROPERTY BOUNDARY LINES AND EASEMENTS TO BE DETERMINED PRIOR TO CONSTRUCTION. ALL TURBINE, ACCESS ROAD COLLECTION AND TRANSMISSION LINE LOCATIONS ARE PRELIMINARY AND SUBJECT TO FINAL DESIGN.

PRELIMINARY

PROPOSED GAS PIPELINE



89

LEGEND

- TURBINE WITH NUMBER
- UNDERGROUND COLLECTION LINE
- OVERHEAD TRANSMISSION LINE
- ACCESS ROADS
- CONSTRUCTION EASEMENT
- PROPERTY BOUNDARY
- EXISTING ROAD RIGHT-OF-WAY WETLANDS FROM TETRA TECH

ISSUE DATE: 04-24-2008

SCALE (FEET)

0 2000

FPL ENERGY - ASHTABULA WIND ENERGY CENTER (GE ARRAY)

OVERALL PRELIMINARY SITE PLAN

BARNES COUNTY, NORTH DAKOTA

SNYDER & ASSOCIATES

1751 MADISON AVENUE
COUNCIL BLUFFS, IOWA 51503
712-322-3202

ATLANTIC, IA
712-243-6505

ANKENY, IA
515-964-2020

MARYVILLE, MO
660-682-8888

ST. JOSEPH, MO
816-364-5222

CHANGED COLLECTION SEC 32-142-57 & SEC 5-14-57	4/24/08	DW
AshTabula GE 1311-8ALts Array DW 04-10-08.on1		
AshTabula GE site 1267 134ALts Array 031408.on1		
AshTabula GE site 1269_Microsited Array DW_TL_030508 Update on		
MARK	REVISION	DATE
Engineer: JWK	Checked By: MGG	Scale: 1"=
Technician: DW	Date: 11-30-07	Field Bk: Pg:
Project No: 107.0775		
File No:		

Sheet 1 of 1

1070775