



TETRA TECH EC, INC.

Memo

To: North Dakota Public Service Commission
From: Ashtabula Wind, LLC/Tetra Tech
Date: May 16, 2008
Re: Rationale for Frequency Bands for Beam Path Study at Ashtabula Wind Energy Center, Barnes County, North Dakota (PSC Case #s PU-08-73 and PU-08-32)

PURPOSE

In August 2007 and April 2008, Comsearch performed an analysis to evaluate the potential effect of the planned Ashtabula Wind Project area in Barnes County, North Dakota on existing non-Federal Government microwave telecom systems. According to this study, none of the proposed turbines will conflict with licensed microwave systems in the frequency bands at the Ashtabula Wind Project.

During the May 2, 2008 North Dakota Public Service Commission hearing, the Commissioners asked Ashtabula Wind to provide the rationale for how frequency bands were selected to study during for beam path study.

According to William Hall of Snyder Associates, the beam path searches include all licensed non-federal Government microwave paths and are in the 900,1.9,2.1,4,6,10,11,18 and 23GHz range. Additionally the Federal Government beam path spectrum is managed by the NTIA agency which determines impacts to their facilities.





Executive Summary – Wind Power GeoPlanner™

Licensed Microwave Search

Comsearch performed an analysis to evaluate the potential effect of the planned Ashtabula Wind Project area in Barnes County, North Dakota on existing non-Federal Government microwave telecom systems.

Comsearch's Wind Power GeoPlanner™ provides a graphical representation of affected microwave paths and provides supporting technical parameters. The microwave path data is overlaid on USGS topographic basemaps.

Microwave Search Results. Comsearch identified no microwave paths that intersect the project area (see Figure 1).

Therefore, none of the proposed turbines will conflict with licensed microwave systems in the frequency bands listed in Figure 1's legend.

Turbines: 139 turbines were considered in the analysis, each with a blade diameter of 77 meters. The coordinates were provided in NAD83.

Map Projection: The ESRI® Shapefiles contained in the enclosed GeoPlanner CD are in NAD 83 UTM Zone 14 projected coordinate system.

Comsearch Contact:

Denise Finney, Account Manager
Phone: (703) 726-5650 Fax: (703) 726-5599
Email: dfinney@comsearch.com

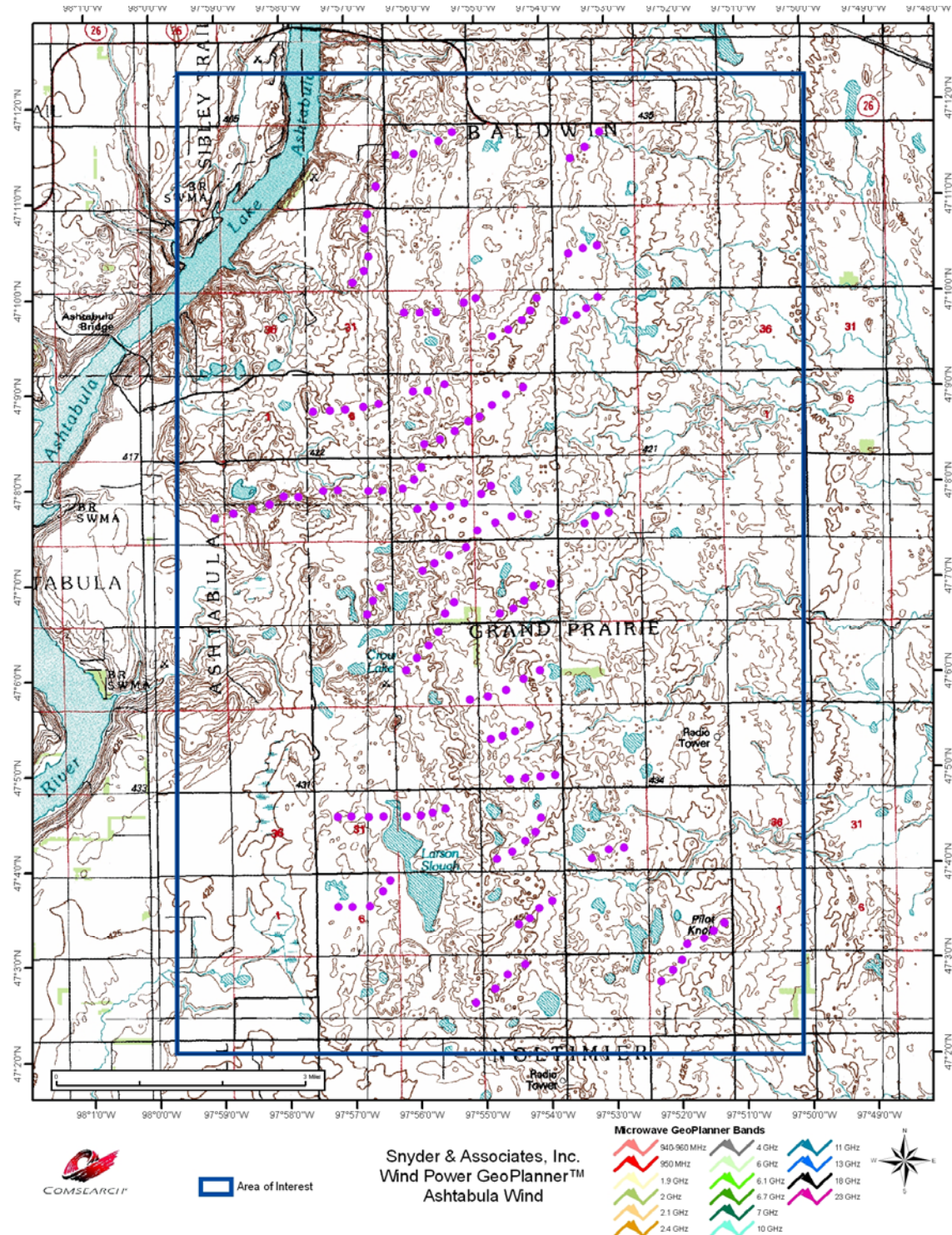


Figure 1 – Wind Power GeoPlanner™