

FPL ENERGY ASHTABULA WIND, LLC
LUVERNE, NORTH DAKOTA

OTTER TAIL Plan of the Day (POD)

Weather Forecast: **Mostly Cloudy**
 High: **82°F** Low: **62°F**
 Winds: **SSE @ 8 mph**
 Precipitation Chances: **40%**

Wednesday, July 16, 2008

COD - 12/15/08

153 Days to COD

FPL Energy	Otter Tail	Blattner	GEWE
-------------------	-------------------	-----------------	-------------

Environmental:

- Developing wetland impact prevention plan and maps
- Monitor environmentally sensitive areas
- Marking environmentally sensitive areas
- Environmental awareness to ALL crews, including sub-contractors
- Silt fence installation

Safety:

- SWPPP inspection Thursday July 24th.
- Check Back-up alarms daily and report.
- Observe speed limits.
- Wear all required PPE.
- Maintain hydration.
- Watch soft spots when off-loading trucks.

Civil:

- Sub-grade OT42-OT44
- Gravel OT31-OT33, OT34-OT36 & OT55-OT57
- Excavation at OT58-OT59
- Pour mud mats at OT59
- Install bottom rebar mat at OT64 & OT65
- Install anchor bolts at OT65
- Install top rebar mat at OT65

Collection:

- Trench & Cable Install 4/O at Yard & OT63

Substation:

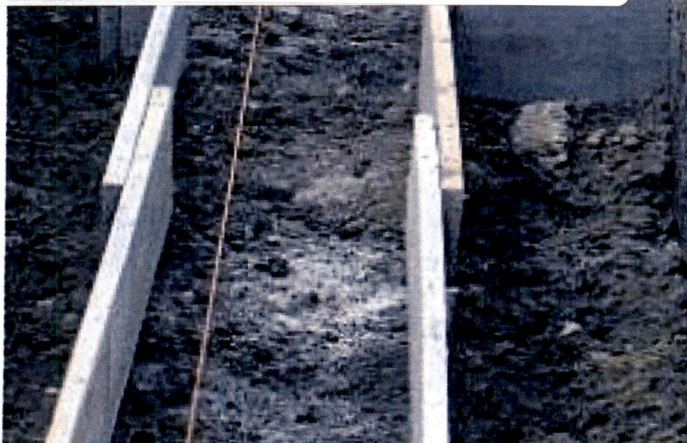
- Grading pad complete

Receiving (As of COB yesterday)			
	Total	Rec'd	Balance
PMT XFR	32	32	0
Grounding XFR	2	0	2
4/O Cable	147,000	143,366	3,634
1000KM	91,446	94,500	-3,054
500KM	45,000	0	45,000
12 Fiber SM	91,000	95,535	-4,535
1001 KCM (LVC)	12,500	0	12,500
Grounding XFR boxp	2	0	2
XFR Box Pads	32	0	32
Copperclad Cable	45,000	11995	33005
Bases	32	0	32
Mids	32	0	32
Tops	32	0	32
Machine Heads	32	0	32
Contollers (DTA's)	32	0	32
Blade Sets	32	0	32
Hubs	32	0	32

General Construction Status

60 **PU-08-32** Filed: 7/16/2008 Pages: 1
 Ashtabula Wind, Otter Tail, Plan of the Day, July 16, 2008

Ashtabula Wind, LLC



	Total	Complete	% Complete
Roads Subgraded	37,970	36,112	95.1%
Roads Complete	37,970	8,700	22.9%
Foundations Excavated	32	6	18.8%
Foundations Poured	32	0	0.0%
Foundations Backfilled	32	0	0.0%
Crane Pads Complete	32	0	0.0%
Tower Base Sections Erected	32	0	0.0%
Tower Mid Sections Erected	32	0	0.0%
Tower Top Sections Erected	32	0	0.0%
Machine Heads Installed	32	0	0.0%
Rotors Flown	32	0	0.0%
Mechanically Completed	32	0	0.0%
Pre-Commissioned	32	0	0.0%
Final Commissioned	32	0	0.0%
Cable Installed 4/O	147,000	648	0.4%
Cable Installed 1000 KM	91,446	0	0.0%
Cable Installed 500 KM	45,000	0	0.0%
Fiber-Optic 12 Fiber SM	91,000	0	0.0%
1001 KCM (LVC)	12,500	0	0.0%
Copperclad Cable	45,000	0	0.0%
Transformers Set	32	0	0.0%
Transformers Terminated	32	0	0.0%
(as of COB yesterday)			

Plan of the Day contents shall not be forwarded or distributed without prior written consent of FPLE