

**FPL ENERGY ASHTABULA WIND, LLC
LIVERNE, NORTH DAKOTA**

***SUBSTATION & TRANSMISSION LINE
Plan of the Day (POD)***

Weather Forecast: Sunny
High: 87°F Low: 57°F
Winds: SW @ 3 mph
Precipitation Chances: 0%

Wednesday, July 30, 2008

FPL Energy

Otter Tail Power Company

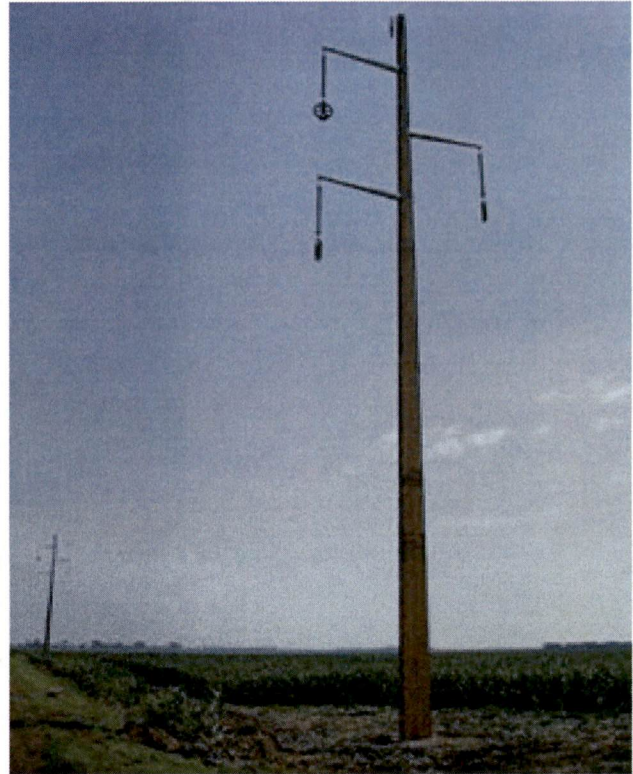
MJ Electric

Substation

- Foundations Poured – 12 bases, 6 tops
- Conduit- Below Grade – Transformer area/west

Transmission Line

- **Safety/Environmental:**
- **Lay-down Yard:**
Structures arriving Friday.
- **Electrical Construction:**
- Setting Structures 21, 23, 34, 38, 45, 46, 47
- Framing structures 34, 38, 45, 46, 47
- Hauling structures & material
- **Miscellaneous:**
- Longfellow will start drilling at structure 2 today. 4 rebar cages yet to be constructed.



General Construction Status

| Work Progress Report | | | |
|---|------------------|--------------|-------------------|
| Major Task | Completed | Total | % Complete |
| Tangent (laminated) foundations excavated | 14 | 74 | 19% |
| Tangent (laminated) structures framed | 14 | 75 | 19% |
| Tangent (laminated) structures set | 12 | 74 | 16% |
| Dead-end/angle (concrete) foundations excavated | 1 | 14 | 7% |
| Dead-end/angle (concrete) foundations poured | 0 | 14 | 0% |
| Dead-end/angle (steel) structures framed | 0 | 14 | 0% |
| Dead-end/angle (steel) structures set | 0 | 14 | 0% |
| Spans of 1272 Bittern conductor strung | 0 | 267 | 0% |
| Spans of 1272 Bittern sagged and clipped | 0 | 267 | 0% |
| Spans of OPGW strung, attached and grounded | 0 | 89 | 0% |
| OPGW splices/terminations completed | 0 | 4 | 0% |
| Miles of distribution line leaned | 6 | 6 | 100% |
| Miles of distribution line dismantled & removed | 0 | 6 | 0% |
| Foundation excavation spoils disposed | 0 | 88 | 0% |
| Reclamation | 0 | 100% | 0% |

83
 PU-08-32 Filed: 7/30/2008 Pages: 1
 Ashtabula Wind, Substation & Transmission Line,
 Plan of the Day, July 30, 2008

Ashtabula Wind, LLC