

FPL ENERGY ASHTABULA WIND, LLC
LUVERNE, NORTH DAKOTA

OTTER TAIL Plan of the Day (POD)

Weather Forecast: **Partly Sunny**
 High: **83°F** Low: **54°F**
 Winds: **WSW @ 7 mph**
 Precipitation Chances: **0%**

Tuesday, August 5, 2008

COD - 12/15/08

133 Days to COD

FPL Energy	Otter Tail	Blattner	GEWE
-------------------	-------------------	-----------------	-------------

Environmental:

- SWPPP inspection August 7th.
- Developing wetland impact prevention plan and maps
- Monitor environmentally sensitive areas
- Marking environmentally sensitive areas
- Environmental awareness to ALL crews

Safety:

- Check Back-up alarms daily and report.
- Observe speed limits.
- Wear all required PPE.
- Maintain hydration.
- Watch soft spots when off-loading trucks.

Civil:

- Pour mud mats at OT35
- Install bottom rebar mat at OT37, OT38 & OT39
- Install anchor bolts at OT40, OT41 & OT42
- Install top rebar mat at OT42, OT43 & OT44
- Form base at OT45 & OT46
- Pour base at OT45 & OT46
- Form pedestal at OT47, OT48 & OT57
- Pour pedestal at OT47, OT48 & OT57
- Backfill at OT65

Electrical:

- Pedestal Conduit at OT46 & OT47
- Smurf tube at OT43 & OT44
- Ground grid at OT65

Collection:

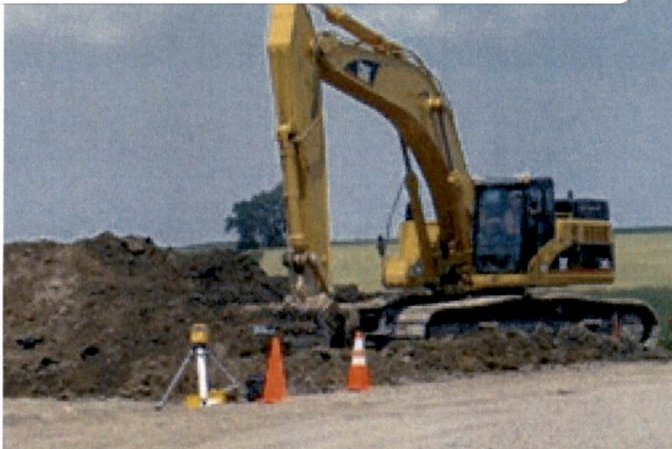
- Trench & Cable Install 500 at JB71-SP704-58

Receiving (As of COB yesterday)			
	Total	Rec'd	Balance
PMT XFR	32	32	0
Grounding XFR	2	2	0
4/0 Cable	147,000	143,366	3,634
1000KM	91,446	94,500	-3,054
500KM	45,000	46,468	-1,468
12 Fiber SM	91,000	95,535	-4,535
1001 KCM (LVC)	12,500	12,500	0
Grounding XFR boxp	2	2	0
XFR Box Pads	32	10	22
Copperclad Cable	45,000	46,291	-1291
Bases	32	0	32
Mids	32	0	32
Tops	32	0	32
Machine Heads	32	0	32
Contollers (DTA's)	32	0	32
Blade Sets	32	0	32
Hubs	32	0	32

General Construction Status

89 PU-08-32 Filed: 8/5/2008 Pages: 1
 Ashtabula, Otter Tail, Plan of the Day, Aug. 5, 2008

Ashtabula Wind, LLC



	Total	Complete	% Complete
Roads Subgraded	37,970	41,566	109.5%
Roads Complete	37,970	41,566	109.5%
Foundations Excavated	32	32	100.0%
Foundations Poured	32	16	50.0%
Foundations Backfilled	32	0	0.0%
Crane Pads Complete	32	0	0.0%
Tower Base Sections Erected	32	0	0.0%
Tower Mid Sections Erected	32	0	0.0%
Tower Top Sections Erected	32	0	0.0%
Machine Heads Installed	32	0	0.0%
Rotors Flown	32	0	0.0%
Mechanically Completed	32	0	0.0%
Pre-Commissioned	32	0	0.0%
Final Commissioned	32	0	0.0%
Cable Installed 4/0	147,000	1,528	1.0%
Cable Installed 1000 KM	91,446	25,988	28.4%
Cable Installed 500 KM	45,000	2,248	5.0%
Fiber-Optic 12 Fiber SM	91,000	0	0.0%
1001 KCM (LVC)	12,500	0	0.0%
Copperclad Cable	45,000	0	0.0%
Transformers Set	32	0	0.0%
Transformers Terminated	32	0	0.0%
<small>(as of COB yesterday)</small>			

Plan of the Day contents shall not be forwarded or distributed without prior written consent of FPLE