

Thursday, August 14, 2008

FPL ENERGY ASHTABULA WIND, LLC
LUVERNE, NORTH DAKOTA

SUBSTATION & TRANSMISSION LINE
Plan of the Day (POD)

Weather Forecast: **Partly Sunny**
High: 81°F Low: 55°F
Winds: NNE @ 6 mph
Precipitation Chances: 24%

FPL Energy Otter Tail Power Company MJ Electric

Substation

- 2 South feeder runs – 3 north basements – south basements - control house conduit
- Grounding 700' trenched North end to East – Capp welds as they go

Lay-down Yard

Electrical Construction

- Setting structures 11, 39, 87
- Framing structures 11, 39
- Hauling material / steel out at 2, 3, 4, 32, 41, 42

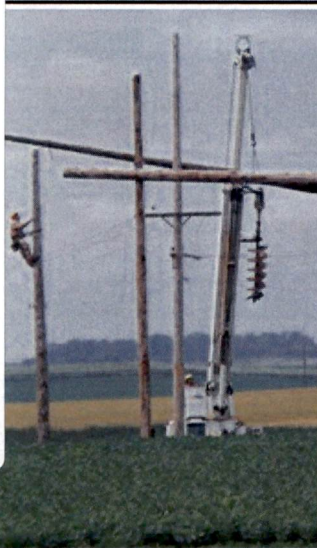
Miscellaneous

- Longfellow drilling structure 89

<i>RECEIVING (As of COB yesterday)</i>			
Substation Materials	Total	Rec'd	Balance
Power Transformer 241.5 kV/225 MVA	1	0	1
Power Transformer 69kV/125MVA (Lease)	1	0	1
HV Motor Disconnect Switch - 230kV 1200A	2	2	0
HV Manual Disconnect Switch 230kV 1200A	3	3	0
LV Manual Disconnect Switch 34.5kV 2000A	4	4	0
LV Manual Disconnect Switch 34.5kV 4000A	1	1	0
LV Manual Disconnect Switch 34.5kV 1200A	10	10	0
LV Hook Disconnect Switch 34.5kV 1200A	60	60	0
HV Circuit Breaker 230kV 1200A	2	2	0
LV Open Air Breaker 34.5 kV 2000A 40 kA	2	2	0
LV Open Air Breaker 34.5 kV 1200A 40 kA	10	7	3
Switchgear with Building	1	0	1
Control House	1	0	1
HV CCVTs 230kV	3	3	0
HV CCVTs 69kV	3	3	0
Metering Units	1	0	1
Metering Units CT	3	0	3
Metering Units PT	3	0	3
Support Steel and Substation Package	1 Lot	1	0
Neutral Reactor	1	1	0
SUBSTATION CONSTRUCTION			% Complete
Galvanized Steel Structures			0%
Bus Conductors, Fittings, Insulators & Associated Materials			0%
Disconnect Switches			0%
Surge Protectors			0%
Circuit Breakers			0%
CCVTs, Metering CTs and PTs			0%
Equipment Control Cable, Conduit, Power Cable & 300' of Cable Trenwa System			0%
Conduit, Ground Bank, Fiber Enc., UG Cable, St Srv, Xfmr			25%
Crushed Rock Surfacing			0%
Grounding			40%
Station Lighting			0%
Sub Signage and Fence			0%
Foundations			100%
Testing			0%

Interconnect Transmission Line

T-LINE CONSTRUCTION	Complete	Balance	% Complete
Tangent (laminated) foundations excavated	73	74	99%
Tangent (laminated) structures framed	72	74	97%
Tangent (laminated) structures set	71	74	96%
Dead-end/angle foundations excavated	11	14	79%
Dead-end/angle foundations poured	11	14	79%
Dead-end/angle (steel) structures framed	0	14	0%
Dead-end/angle (steel) structures set	0	14	0%
Spans of 1272 Bitterm conductor strung	0	267	0%
Spans of 1272 Bitterm sagged and clipped	0	267	0%
Spans of OPGW strung, attached and grounded	0	89	0%
OPGW splices/terminations completed	0	4	0%
Miles of distribution line leaned	6	6	100%
Miles of distribution line dismantled & removed	0	6	0%
Foundation excavation spoils disposed	5	88	6%
Reclamation	0	100%	0%



Ashtabula Wind, LLC

Plan of the Day contents shall not be forwarded or distributed without prior written consent of FPLE