

Friday, August 15, 2008

**FPL ENERGY HTABULA WIND, LLC
LIVERNE, NORTH DAKOTA**

**SUBSTATION & TRANSMISSION LINE
Plan of the Day (POD)**

Weather Forecast: Partly Sunny
High: 82°F Low: 55°F
Winds: SSE @ 4 mph
Precipitation Chances: 10%

FPL Energy Otter Tail Power Company MJ Electric

Substation

- Dewater: Hope to work on remaining 4 basements
- Steel structures – Static mass delivery today

Lay-down Yard

Electrical Construction

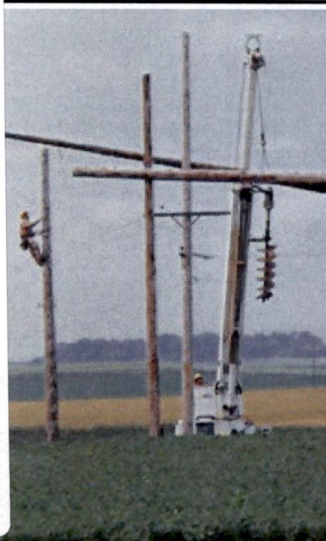
- Setting structures 32
- Framing structures 32
- Hauling material / steel out at 78, 88, 89

Miscellaneous

- Longfellow drilling structure 65 on Monday

<i>RECEIVING (As of COB yesterday)</i>			
Substation Materials	Total	Rec'd	Balance
Power Transformer 241.5 kV/225 MVA	1	0	1
Power Transformer 69kV/125MVA (Lease)	1	0	1
HV Motor Disconnect Switch - 230kV 1200A	2	2	0
HV Manual Disconnect Switch 230kV 1200A	3	3	0
LV Manual Disconnect Switch 34.5kV 2000A	4	4	0
LV Manual Disconnect Switch 34.5kV 4000A	1	1	0
LV Manual Disconnect Switch 34.5kV 1200A	10	10	0
LV Hook Disconnect Switch 34.5kV 1200A	60	60	0
HV Circuit Breaker 230kV 1200A	2	2	0
LV Open Air Breaker 34.5 kV 2000A 40 kA	2	2	0
LV Open Air Breaker 34.5 kV 1200A 40 kA	10	7	3
Switchgear with Building	1	0	1
Control House	1	0	1
HV CCVTs 230kV	3	3	0
HV CCVTs 69kV	3	3	0
Metering Units	1	0	1
Metering Units CT	3	0	3
Metering Units PT	3	0	3
Support Steel and Substation Package	1 Lot	1	0
Neutral Reactor	1	1	0
SUBSTATION CONSTRUCTION			% Complete
Galvanized Steel Structures			0%
Bus Conductors, Fittings, Insulators & Associated Materials			0%
Disconnect Switches			0%
Surge Protectors			0%
Circuit Breakers			0%
CCVT's, Metering CT's and PT's			0%
Equipment Control Cable, Conduit, Power Cable & 300' of Cable Trenwa System			0%
Conduit, Ground Bank, Fiber Enc., UG Cable, St Svc, Xfmr			25%
Crushed Rock Surfacing			0%
Grounding			40%
Station Lighting			0%
Sub Signage and Fence			0%
Foundations			100%
Testing			0%

Interconnect Transmission Line



T-LINE CONSTRUCTION	Complete	Balance	% Complete
Tangent (laminated) foundations excavated	74	74	100%
Tangent (laminated) structures framed	73	74	99%
Tangent (laminated) structures set	73	74	99%
Dead-end/angle foundations excavated	12	14	86%
Dead-end/angle foundations poured	12	14	86%
Dead-end/angle (steel) structures framed	1	14	7%
Dead-end/angle (steel) structures set	1	14	7%
Spans of 1272 Bitterm conductor strung	0	267	0%
Spans of 1272 Bitterm sagged and clipped	0	267	0%
Spans of OPGW strung, attached and grounded	0	89	0%
OPGW splices/terminations completed	0	4	0%
Miles of distribution line leaned	6	6	100%
Miles of distribution line dismantled & removed	0	6	0%
Foundation excavation spoils disposed	5	88	6%
Reclamation	0	100%	0%

Plan of the Day contents shall not be forwarded or distributed without prior written consent of FPLE