

FPL ENERGY ASHTABULA WIND, LLC
LIVERNE, NORTH DAKOTA

OTTER TAIL Plan of the Day (POD)

Weather Forecast: **Mostly Cloudy**
 High: **67°F** Low: **42°F**
 Winds: **NW @ 9 mph**
 Precipitation Chances: **51%**

Friday, September 5, 2008

COD - 12/15/08

102 Days to COD

FPL Energy	Otter Tail	Blattner	GEWE
------------	------------	----------	------

Environmental:

- SWPPP inspection September 18th
- Developing wetland impact prevention plan and maps
- Monitor environmentally sensitive areas
- Marking environmentally sensitive areas
- Environmental awareness to ALL crews

Safety:

- Check Back-up alarms daily and report.
- Observe speed limits.
- Wear all required PPE.
- Maintain hydration.
- Watch soft spots when off-loading trucks.

Civil:

- Offload tower sections, nacelles, hubs & blades

Erection:

- Build crane pads at OT39- OT44
- Erect base/mid at OT64
- Assemble rotor at OT64

Electrical:

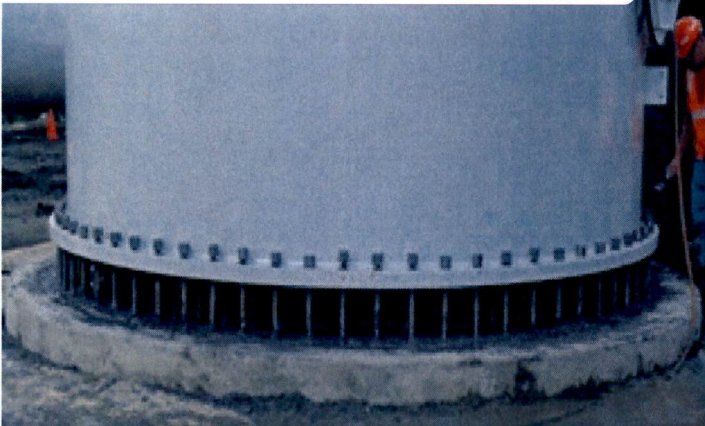
- Controller termination at OT59, OT60 & OT62
- High voltage cable term at OT61 – OT63 & OT65
- Low voltage cable term at OT64 & OT65
- J Box termination at OT71

Receiving (As of COB yesterday)			
	Total	Rec'd	Balance
PMT XFR	32	33	-1
Grounding XFR	2	2	0
4/0 Cable	147,000	150,560	-3,560
1000KM	91,446	94,500	-3,054
500KM	45,000	46,468	-1,468
12 Fiber SM	91,000	95,535	-4,535
1001 KCM (LVC)	12,500	12,500	0
Grounding XFR boxp	2	2	0
XFR Box Pads	32	32	0
Copperclad Cable	45,000	46,291	-1291
Bases	32	6	26
Mids	32	9	23
Tops	32	8	24
Machine Heads	32	9	23
Contollers (DTA's)	32	16	16
Blade Sets	32	9	23
Hubs	32	14	18

General Construction Status

155 PU-08-32 Filed: 9/5/2008 Pages: 1
 Ashtabula Wind, Otter Tail, Plan of the Day, Sept. 5, 2008

Ashtabula Wind, LLC



	Total	Complete	% Complete
Roads Subgraded	37,970	41,566	109.5%
Roads Complete	37,970	41,566	109.5%
Foundations Excavated	32	32	100.0%
Foundations Poured	32	32	100.0%
Foundations Backfilled	32	32	100.0%
Crane Pads Complete	32	21	65.6%
Tower Base Sections Erected	32	1	3.1%
Tower Mid Sections Erected	32	1	3.1%
Tower Top Sections Erected	32	0	0.0%
Machine Heads Installed	32	0	0.0%
Rotors Flown	32	0	0.0%
Mechanically Completed	32	0	0.0%
Pre-Commissioned	32	0	0.0%
Final Commissioned	32	0	0.0%
Cable Installed 4/0	127,188	124,587	98.0%
Cable Installed 1000 KM	58,311	77,964	133.7%
Cable Installed 500 KM	44,316	38,802	87.6%
Fiber-Optic 12 Fiber SM	91,000	0	0.0%
1001 KCM (LVC)	12,500	0	0.0%
Copperclad Cable	45,000	0	0.0%
Transformers Set	32	32	100.0%
Transformers Terminated	32	1	3.1%
(as of COB yesterday)			