

**FPL ENERGY ASHTABULA WIND, LLC
LIVERNE, NORTH DAKOTA**

**SUBSTATION & TRANSMISSION LINE
Plan of the Day (POD)**

Weather Forecast: Sunny
High: 73°F Low: 48°F
Winds: SSE @ 1 mph
Precipitation Chances: 0%

Wednesday, September 17, 2008

FPL Energy Otter Tail Power Company MJ Electric

Substation

- 3" & 5" East yard
- Install hook stick switches
- Pull wire / terminate
- Above ground grounding

Lay-down Yard

Electrical Construction

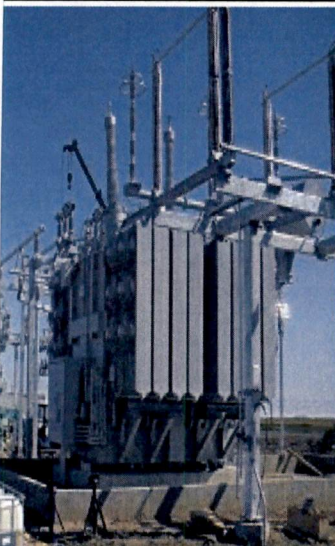
- Pulling last 2 1/2 miles of OPGW in from #60 to substation
- Start sag conductor & clipping in

Miscellaneous

<i>RECEIVING (As of COB yesterday)</i>			
Substation Materials	Total	Rec'd	Balance
Power Transformer 241.5 kV/225 MVA	1	1	0
Power Transformer 69kV/125MVA (Lease)	1	1	0
HV Motor Disconnect Switch - 230kV 1200A	2	2	0
HV Manual Disconnect Switch 230kV 1200A	3	3	0
LV Manual Disconnect Switch 34.5kV 2000A	4	4	0
LV Manual Disconnect Switch 34.5kV 4000A	1	1	0
LV Manual Disconnect Switch 34.5kV 1200A	10	10	0
LV Hook Disconnect Switch 34.5kV 1200A	60	60	0
HV Circuit Breaker 230kV 1200A	2	2	0
LV Open Air Breaker 34.5 kV 2000A 40 kA	2	2	0
LV Open Air Breaker 34.5 kV 1200A 40 kA	10	10	0
Switchgear with Building	1	1	0
Control House	1	1	0
HV CCVTs 230kV	3	3	0
HV CCVTs 69kV	3	3	0
Metering Units	1	0	1
Metering Units CT	3	0	3
Metering Units PT	3	0	3
Support Steel and Substation Package	1 Lot	1	0
Neutral Reactor	1	1	0
SUBSTATION CONSTRUCTION			% Complete
Galvanized Steel Structures			100%
Rigid Bus System (FT)			73%
Flexible Bus Jumper			0%
Insulators			100%
Disconnect Switches			50%
Surge Protectors			75%
Circuit Breakers			96%
CCVTs, Metering CTs and PTs			81%
Conduit - Below Grade			100%
Conduit - Above Grade			96%
Cable Trenwa System			100%
Equipment Cable Installation (# of runs)			86%
Equipment Cable Termination			26%
Conduit, Ground Bank, Fiber Enc., UG Cable, St Srvc, Xfmr			80%
Crushed Rock Surfacing			0%
Grounding - Below Grade			80%
Grounding - Above Grade			10%
Station Lighting			0%
Sub Signage and Fence			0%
Foundations			100%
Testing			0%

Interconnect Transmission Line

T-LINE CONSTRUCTION	Complete	Balance	% Complete
Tangent (laminated) foundations excavated	74	0	100%
Tangent (laminated) structures framed	74	0	100%
Tangent (laminated) structures set	74	0	100%
Dead-end/angle foundations excavated	14	0	100%
Dead-end/angle foundations poured	14	0	100%
Dead-end/angle (steel) structures framed	14	0	100%
Dead-end/angle (steel) structures set	14	0	100%
Spans of 1272 Bitterm conductor strung	264	3	99%
Spans of 1272 Bitterm sagged and clipped	120	147	45%
Spans of OPGW strung, attached and grounded	30	59	34%
OPGW splices/terminations completed	0	4	0%
Miles of distribution line leaned	6	0	100%
Miles of distribution line dismantled & removed	5.9	0.1	98%
Foundation excavation spoils disposed	88	0	100%
Reclamation	0	100%	0%



178 PU-08-32 Filed: 9/17/2008 Pages: 1
 Ashtabula Wind, Substation, Plan of the Day, Sept. 17, 2008

Ashtabula Wind, LLC